

RUNNING START INFO SESSION

North Seattle College



OVERVIEW



- North Seattle College overview
- Running Start overview
- Common questions about Running Start
- How to Apply
- Important Dates
- Questions

NORTH SEATTLE COLLEGE

- Student population: ~6,200 students
- Transfer degrees, career training programs, Bachelor's of Applied Science programs
- Average age: 32
- Majority of students are part-time
- No specific Running Start classes



WHAT IS RUNNING START?

WHAT?

- Created in 1990 by WA State
- Juniors/seniors earn high school and college credit
- Free/reduced cost tuition up to 21 credits per quarter

WHO?

- WA State public high school junior and seniors
- Must place into college-level English or math

SUPPORT

- Disability Services
- Tutoring
- Academic Counseling
- Student Leadership
- Equity Centers & Multicultural Services

WHO ARE RUNNING START STUDENTS?

- Good time-management skills
- Seek challenging curriculum
- Prefer college campus
- Ready for independence

FALL 2023
560 students

68% part-time
32% full-time

Cumulative GPA (fall '23)
87% - 2.0 or above
75% - 3.0 or above
61% - 3.5 or above

24 students completed
associates degree 2023

BENEFITS

- Save ~\$650 for one college class!
- Earn an associate's degree and high school diploma through NSC
- Prepare for your major early
- Gain experience on a college campus
- Stay involved with high school while in Running Start (sports, prom, clubs, etc)




COSTS

Up to 21 credits of tuition free (15 credits would be considered full time), however students are responsible for some expenses:



Class fees

\$40 - \$250 per quarter



Books &
Supplies

\$50 - \$400 per quarter



Transportation

Parking pass \$50 per quarter

FREE & REDUCED LUNCH

Students who qualify for free and reduced lunch at the high school are eligible for:

- Class fees waived
- Borrow textbooks through Running Start office
- Laptop rental

ACADEMIC LIFE



Classes

- Part-time or full-time
- Covers courses 100-level and above
- Complete high school requirements
- Explore new subjects



Credits

5 college credits (1 quarter)
=
1 high school credit (1 year)

1 class hour = 2 hours of study
time outside of class



Timing

- Primarily morning and evening classes
- Limited afternoon classes
- Different class formats: In-person, online, and virtual



COLLEGE CALENDAR

- Quarter vs. Semester system
- 11 weeks long (summer is 8 weeks)
- Breaks may not align with high school (no mid -winter break)
- Can join Running Start any quarter

SUMMER QUARTER RUNNING START

Eligibility:

- Rising juniors (current 10th graders) eligible for 10 credits
- Rising seniors (current 11th graders) eligible for 10 credits if not previously enrolled in Running Start

Considerations:

- 8 weeks instead of 11 weeks
- No high school support
- Quarter typically runs late-June to mid-August
- Smaller college community
- Summer EVF

WORKING WITH YOUR...

High School Counselor

- High schools have specific application requirements for Running Start students
- Meet every quarter before NSC Registration
- Understand high school graduation requirements
- Any other high school requirements

Running Start Advisor

- Processes application
- Assists with quarterly registration and educational planning
- Monitors quarterly academic progress
- Connects students to campus resources

RUNNING START OR AP/IB CLASSES

Running Start:

- Classes taken in 11 weeks
- Earn a grade at end of the quarter and receive college credit
- Start your permanent college transcript

AP/IB:

- Classes taken for an entire academic year
- Must take the AP/IB exam at end of year
- AP/IB scores only count as college credit if high enough

FROM RUNNING START TO A 4-YEAR



- Apply as a first-year/freshman
- Still required to take SAT/ACT as applicable
- Pay for NSC transcript to be sent to colleges
- Check with out-of-state schools regarding college credit
- Continue at NSC to complete an associate's degree/career training program

PARENT/GUARDIAN RIGHTS & RESPONSIBILITIES

- You will have access to Running Start grades at the end of the quarter via high school transcript
- Grades are not mailed home
- College staff cannot share information about the student with parents or guardians unless a consent to release confidential information form is on-file .

APPLY

Steps to Enroll and documents available at:

<https://northseattle.edu/running-start/get-started>

Apply online to
NSC

Determine
placement for
classes

Submit Running
Start Enrollment
Packet

NEXT STEPS

Submit Running Start Enrollment Packet online, by email, or in-person on 2nd floor of College Center building

- Your application will be reviewed, and you will receive an email response from our office within 2 business days.
- If your application is incomplete, a staff member will request additional information from you.
- If your application is complete, we will provide instructions on how to sign-up for a group registration session starting late -may

DATES & DEADLINES

- Accepting applications through beginning of fall quarter
- New student registration begins: May 22
- Mandatory new student orientation: Early Sept.
- Fall Quarter begins: Sept. 26

QUESTIONS?

North Seattle College:

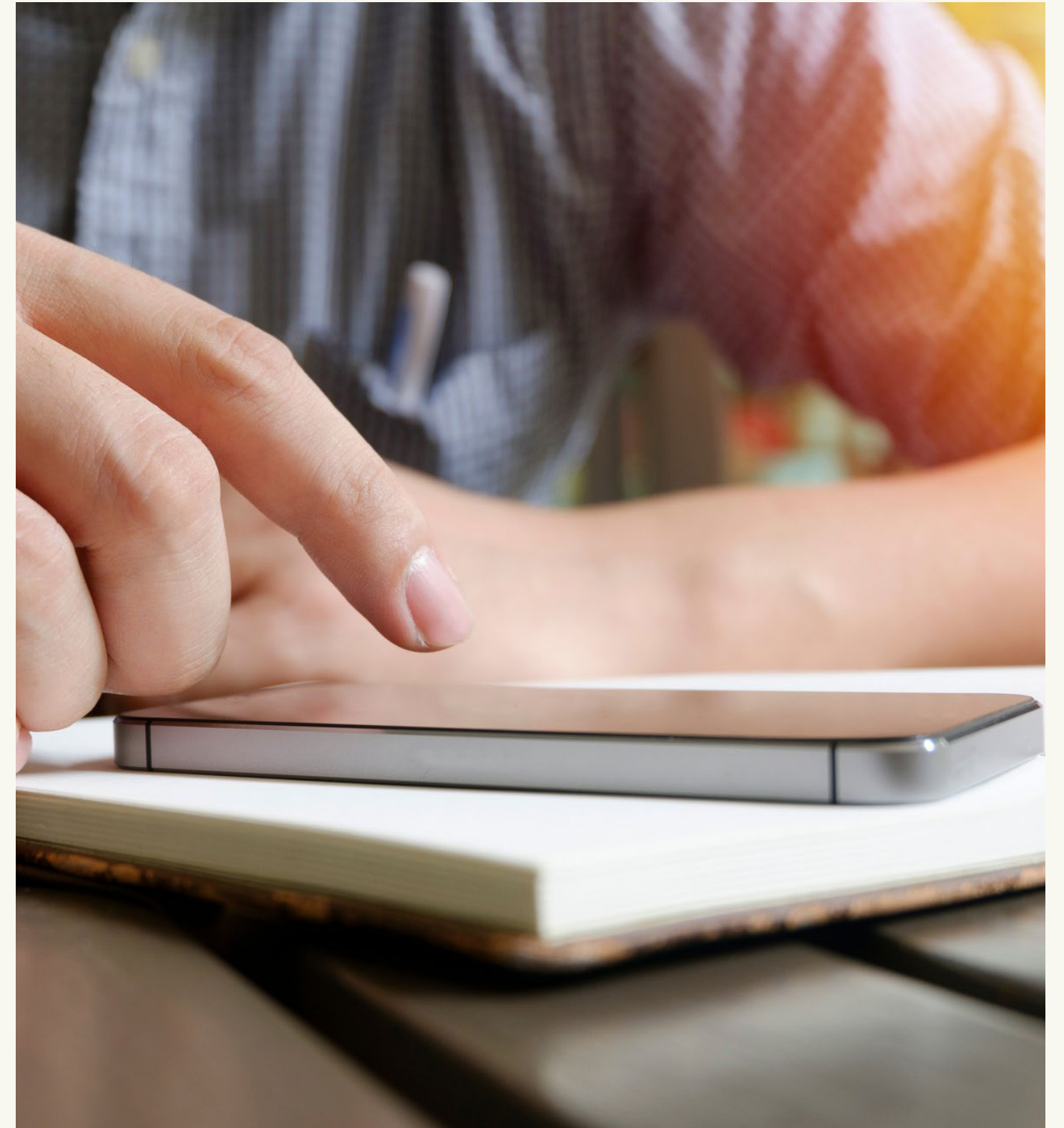
NSCCRStart@seattlecolleges.edu

Seattle Central College:

RunningStart.Central@seattlecolleges.edu

South Seattle College:

RunningStart.South@seattlecolleges.edu



RESOURCES

- Steps to Enroll at North - https://northseattle.edu/running_start/get_started
- Disability Services - https://northseattle.edu/disability_services
- Placement Testing - https://northseattle.edu/placement_tests
- Associate Degree Information - https://northseattle.edu/programs/college_transfer/transfer_degree_options
- Class schedule - https://csprd.ctclink.us/psp/csprd/EMPLOYEE/PSFT_CS/s/WEBLIB_HCX_CM.H_CLASS_SEARCH.FieldFormula.IScript_Main?institution=WA063

Please take a few minutes to
complete our survey!

