



Garfield Science Course Offerings

2026-27

Seattle Public Schools is committed to making its online information accessible and usable to all people, regardless of ability or technology. Meeting web accessibility guidelines and standards is an ongoing process that we are consistently working to improve.

While Seattle Public Schools endeavors to only post documents optimized for accessibility, due to the nature and complexity of some documents, an accessible version of the document may not be available. In these limited circumstances, the District will provide equally effective alternate access.

For questions and more information about this document, please contact the following:

Missy Chow
Registrar, Garfield High School
mlchow@seattleschools.org

A flowchart showing the sequence of science courses a Garfield student may take in the 2026-27 school year.

General Notes:

- **Rightward-pointing arrows** represent prerequisites.
- **Vertical arrows** (in the last two columns) suggest that students can move from/to these classes as long as other prerequisites are met.

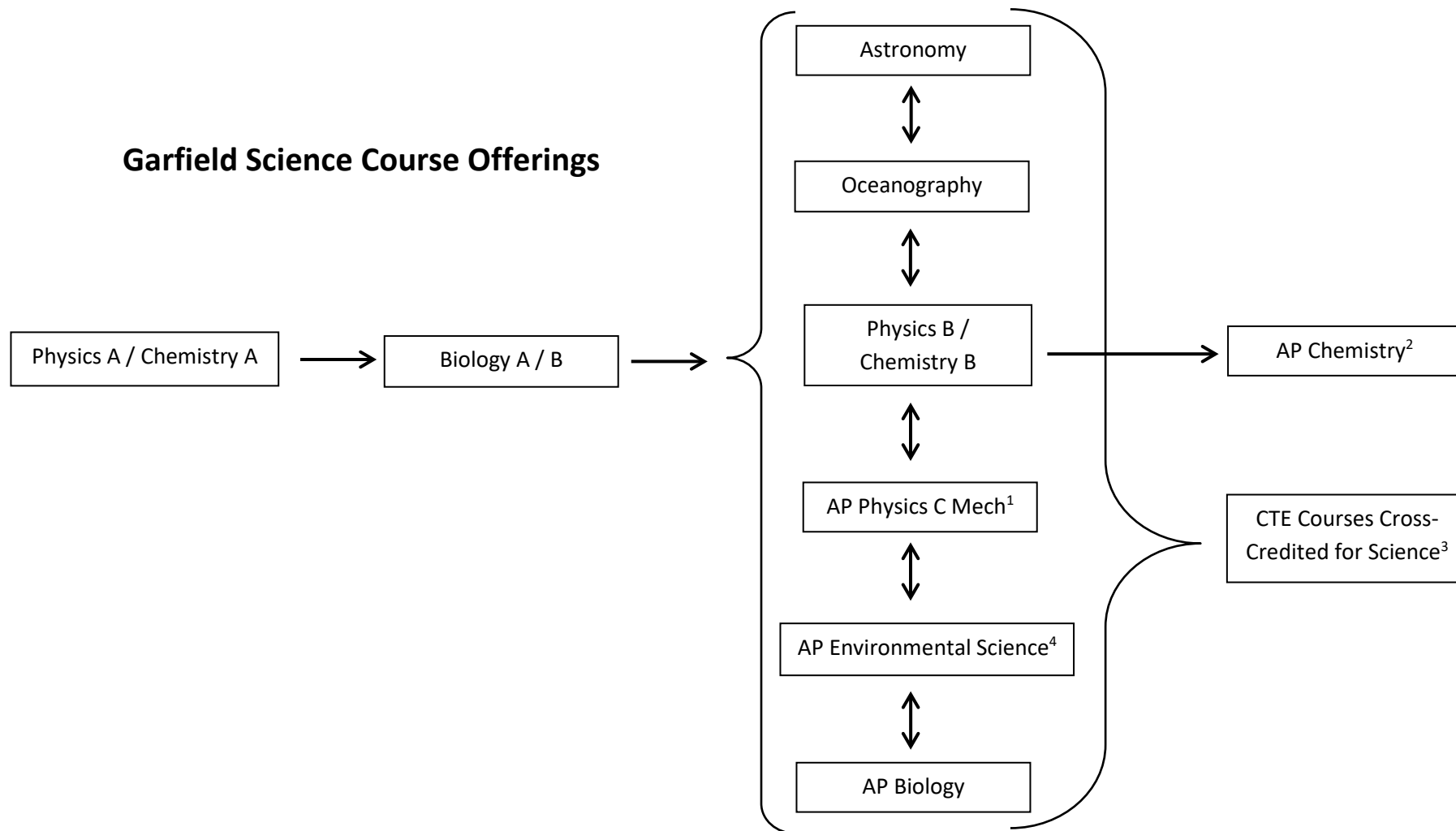
Footnotes:

1. Must be co-enrolled or have taken Calculus (A/B) prior to the start of class.
2. Must have completed Algebra II and Chemistry B prior to the start of class.
3. The following courses can be taken **either** for CTE or Science Credit: Comp Sci A1/A2, Nutrition & Wellness
4. AP Environmental Science is dual credited for CTE.

Incoming 9th Graders:

- All incoming 9th graders will be enrolled in Phys A / Chem A as 9th graders.

Garfield Science Course Offerings



General Notes:

- **Rightward-pointing arrows** represent prerequisites.
- **Vertical arrows** (in the last two columns) suggest that students can move from/to these classes as long as other prerequisites are met.

Footnotes:

1. Must be co-enrolled or have taken Calculus (A/B) prior to the start of class.
2. Must have completed Algebra II and Chemistry B prior to the start of class.
3. The following courses can be taken **either** for CTE or Science Credit: Comp Sci A1/A2, Nutrition & Wellness
4. AP Environmental Science is dual credited for CTE.

Incoming 9th Graders:

- All incoming 9th graders will be enrolled in Phys A / Chem A as 9th graders.