

2940 Westlake Ave N #200
Seattle, WA 98109
206-528-4670

Seattle Public Schools -
Woodland Park Gravel Lot
1000 N. 50th St.
Seattle, WA 98103
Parcel: 0725049002

Legend

- Assessed Trees
- King County Parcels
- Scope of Work

Regulated trees 6-inches diameter or greater on the site are identified with a number. Trees were not tagged on site per request from Seattle Parks. Some trees may have a unique ID associated with the SPR GIS database.

Tree data including DSH, species, and tree condition are listed in a separate Tree Table.

All site plans should be updated to include tree ID and accurate dripline data prior to any design related to tree protection.

Tree Site Map

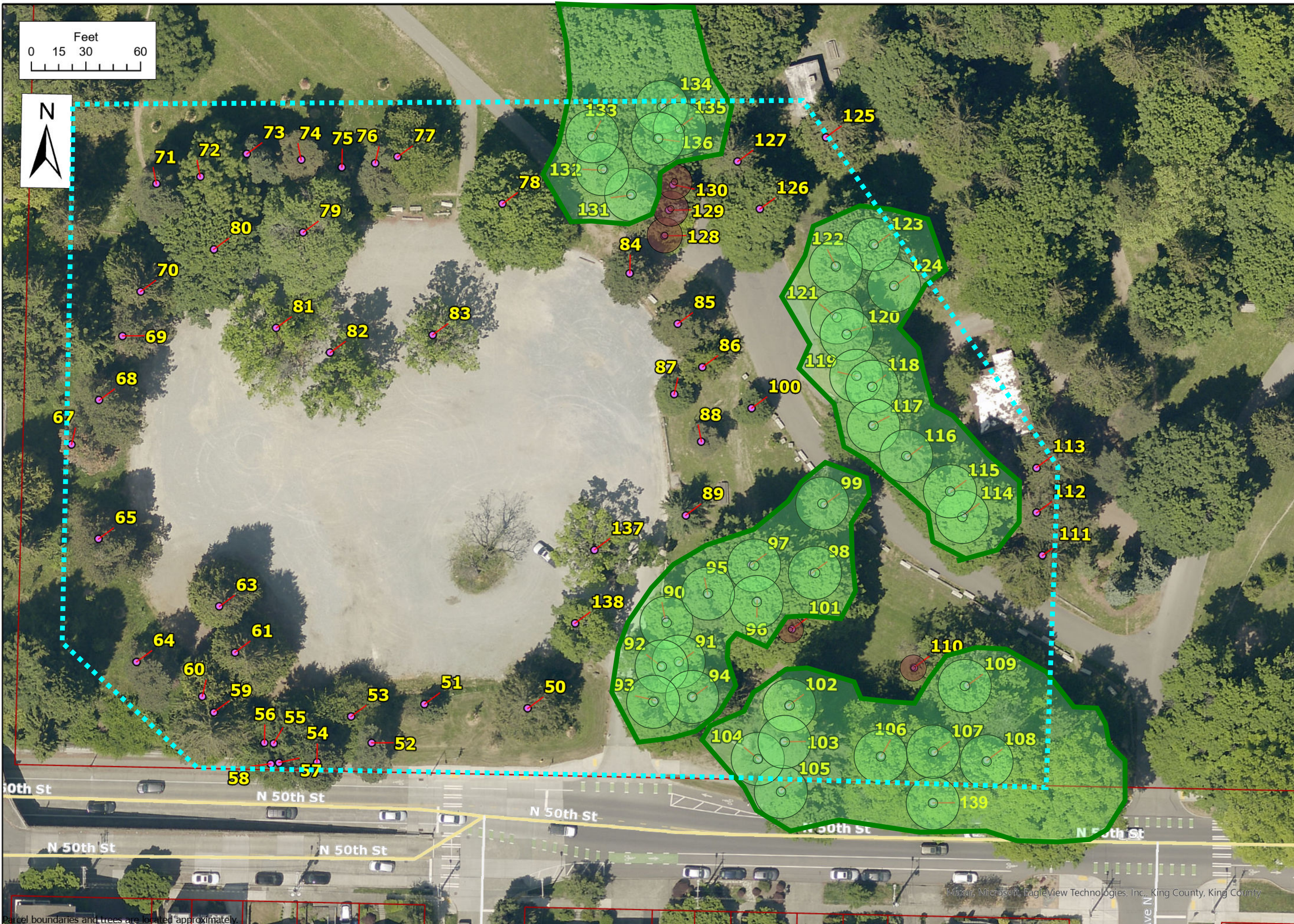
Date: August 29, 2025

Arborist:
Shannon O'Bent
ISA PN-8468A

Holly Iosso, RCA
ISA PN-6298A,
TRAQ

Parcel boundaries and trees are located approximately.

Maxar, Microsoft, EagleView Technology



2940 Westlake Ave N #200
Seattle, WA 98109
206-528-4670

Seattle Public Schools -
Woodland Park Gravel Lot
1000 N. 50th St.
Seattle, WA 98103
Parcel: 0725049002

Legend

- Assessed Trees
- King County Parcels
- Tree < 12" located near a grove
- Tree > 12" located within a grove
- Scope of Work

Grove Analysis

Date: August 29, 2025

Arborist:
Shannon O'Bent
ISA PN-8468A

Holly Iosso, RCA
ISA PN-6298A,
TRAQ

Maxar, Microsoft, EagleView Technologies, Inc., King County, King County

Parcel boundaries and trees are located approximately.

Table of Trees
Woodland Park Gravel Lot, Seattle, WA

SPR ID as accessed in City of Seattle GIS Tree database (seattlecitygis.maps.arcgis.com)

DSH (Diameter at Standard Height) is measured 4.5 feet above grade, or as specified in the *Guide for Plant Appraisal, 10th Edition*, published by the Council of Tree and Landscape Appraisers.

Multi-stem measurements are listed under DSH Multistem. The value listed under the DSH column for these trees is a single stem equivalent, calculated as the square root of the sum of the DSH for each individual stem squared.

Tier is based on SMC 25.11 and Director's Rule 7-2023.

*Tree Protection Area is calculated as 10 times DSH or greater depending on tree species, health, and age. This can change during the design process.

Dripline is measured from the center of the tree to the outermost extent of the canopy.

SPR ID	Tree ID	Scientific Name	Common Name	DSH (inches)	DSH Multistem	Health Condition	Structural Condition	Dripline (feet)	Tier 2 Threshold	Grove	Tier Level	Tree Protection Area (feet)	Replacement Trees Required (if removed)	Notes
	50	<i>Thuja plicata</i>	Western redcedar	35.0		Good	Good	18	24.0		2	29	3	
	51	<i>Pinus nigra</i>	Austrian black pine	10.2		Good	Good	9	24.0		4	9	3	
	52	<i>Pinus sylvestris</i>	Scots pine	17.2		Good	Good	16	24.0		3	14	3	
	53	<i>Prunus lusitanica</i>	Portuguese cherry laurel		see notes	Good	Good		24.0		-	n/a	n/a	12 stems between 5-12 inches; King County weed of concern
	54	<i>Pinus nigra</i>	Austrian black pine	28.2		Good	Good	19	24.0		2	24	3	
	55	<i>Prunus avium</i>	Wild cherry	10.5		Fair	Fair		-		4	9	n/a	Obstructed by ivy, visual assessment limited; King County Noxious weeds list
	56	<i>Picea abies</i>	Norway spruce	18.5		Good	Fair	24	24.0		3	15	3	
	57	<i>Picea abies</i>	Norway spruce	15.0		Good	Good	14	24.0		3	13	3	
	58	<i>Prunus avium</i>	Wild cherry	17.2	8.5, 11.5, 9.5	Good	Fair	17	-		3	14	n/a	King County Noxious weeds list
	59	<i>Thuja plicata</i>	Western redcedar	42.0	18.9, 37.5	Good	Good	16	24.0		2	35	3	
	60	<i>Thuja plicata</i> 'Zebrina'	Zebrina redcedar	24.5		Good	Good	18	24.0		2	20	3	
13888	61	<i>Thuja plicata</i>	Western redcedar	57.2		Good	Good	24	24.0		2	48	3	Measured at narrowest point below union
	62													no tree associated with this number
25521	63	<i>Thuja plicata</i>	Western redcedar	37.9		Good	Good	22	24.0		2	32	3	Evidence of recent encampment fire at base, 40% canopy damage
	64	<i>Pinus sylvestris</i>	Scots pine	19.6		Good	Good	16	24.0		3	16	3	
13894	65	<i>Pinus nigra</i>	Austrian black pine	30.2		Good	Good	28	24.0		2	25	3	

Table of Trees
Woodland Park Gravel Lot, Seattle, WA

SPR ID	Tree ID	Scientific Name	Common Name	DSH (inches)	DSH Multistem	Health Condition	Structural Condition	Dripline (feet)	Tier 2 Threshold	Grove	Tier Level	Tree Protection Area (feet)	Replacement Trees Required (if removed)	Notes
13895	67	<i>Pinus nigra</i>	Austrian black pine	29.0		Poor	Good	18	24.0		2	24	3	Two trunk leaders, Dieback on one leader up to 50% of canopy likely due to insect damage such as pine shoot moth.
13896	68	<i>Pinus nigra</i>	Austrian black pine	30.1		Fair	Good	24	24.0		2	25	3	
13897	69	<i>Pinus nigra</i>	Austrian black pine	28.4		Fair	Good	23	24.0		2	24	3	Canopy dieback likely due to insect damage such as pine shoot moth.
	70	<i>Thuja plicata</i>	Western redcedar	42.8		Good	Good	18	24.0		2	36	3	
	71	<i>Pinus sylvestris</i>	Scots pine	21.1		Good	Good	24	24.0		3	18	3	
	72	<i>Aesculus hippocastanum</i>	Horsechestnut	26.5		Good	Good	22	24.0		2	22	3	
	73	<i>Pinus sylvestris</i>	Scots pine	16.7		Good	Good	13	24.0		3	14	3	
	74	<i>Pinus sylvestris</i>	Scots pine	20.2		Good	Good	17	24.0		3	17	3	
	75	<i>Pinus sylvestris</i>	Scots pine	14.2		Good	Good	12	24.0		3	12	3	Significantly asymmetrical, furthest drip 30 feet towards northeast
	76	<i>Pinus sylvestris</i>	Scots pine	17.5		Good	Good	15	24.0		3	15	3	Drip to south 23'
	77	<i>Aesculus flava</i>	Yellow buckeye	28.0		Good	Good	25	24.0		2	23	3	
13910	78	<i>Acer macrophyllum</i>	Bigleaf maple	38.0		Good	Good	33	24.0		2	32	3	
33437	79	<i>Acer macrophyllum</i>	Bigleaf maple	44.6		Good	Good	35	24.0		2	37	3	
13898	80	<i>Acer macrophyllum</i>	Bigleaf maple	35.3		Good	Good	37	24.0		2	29	3	Existing tag 311
13900	81	<i>Acer macrophyllum</i>	Bigleaf maple	38.5		Fair	Fair	30	24.0		2	32	3	Existing tag not legible. In decline.
13901	82	<i>Acer macrophyllum</i>	Bigleaf maple	32.8		Fair	Good	23	24.0		2	27	3	Existing tag 314. In decline.
13902	83	<i>Acer macrophyllum</i>	Bigleaf maple	31.2		Fair	Fair	26	24.0		2	26	3	Broken top. In decline.
	84	<i>Pinus nigra</i>	Austrian black pine	29.8		Good	Fair	23	24.0		2	25	3	Twisting codominant union
	85	<i>Pinus nigra</i>	Austrian black pine	27.1		Good	Good	17	24.0		2	23	3	
	86	<i>Thuja plicata</i>	Western redcedar	47.5		Good	Poor	15	24.0		2	40	3	Robust stump growth. Only 1/4 circumference living, old failure, extensive decay
	87	<i>Amelanchier alnifolia</i>	Serviceberry	9.2		Good	Good	12	6.0		2	8	3	
25912	88	<i>Pinus sylvestris</i>	Scots pine	13.2		Good	Good	13	24.0		3	11	3	
	89	<i>Pseudotsuga menziesii</i>	Douglas-fir	15.1		Good	Good	16	24.0		3	13	3	
	90	<i>Acer macrophyllum</i>	Bigleaf maple	24.3		Good	Fair	27	24.0	Grove	2	20	3	Dead wood in canopy
13909	91	<i>Acer macrophyllum</i>	Bigleaf maple	17.5		Good	Good	18	24.0	Grove	2	15	3	
	92	<i>Thuja plicata</i>	Western redcedar	28.5		Good	Good	18	24.0	Grove	2	24	3	Some canopy flagging
13907	93	<i>Acer macrophyllum</i>	Bigleaf maple	24.7		Good	Good	30	24.0	Grove	2	21	3	Upper canopy flagging, dead wood

Table of Trees
Woodland Park Gravel Lot, Seattle, WA

SPR ID	Tree ID	Scientific Name	Common Name	DSH (inches)	DSH Multistem	Health Condition	Structural Condition	Dripline (feet)	Tier 2 Threshold	Grove	Tier Level	Tree Protection Area (feet)	Replacement Trees Required (if removed)	Notes
	94	<i>Thuja plicata</i>	Western redcedar	38.2		Good	Good	22	24.0	Grove	2	32	3	Old bark damage at base, strong reaction growth
	95	<i>Pinus sylvestris</i>	Scots pine	21.6		Good	Good	17	24.0	Grove	2	18	3	
	96	<i>Acer macrophyllum</i>	Bigleaf maple	34.0		Good	Good	37	24.0	Grove	2	28	3	
	97	<i>Acer macrophyllum</i>	Bigleaf maple	34.0		Good	Good	40	24.0	Grove	2	28	3	
	98	<i>Acer macrophyllum</i>	Bigleaf maple	26.3		Good	Good	35	24.0	Grove	2	22	3	
	99	<i>Thuja plicata</i>	Western redcedar	43.6		Good	Fair	20	24.0	Grove	2	36	3	Large triangle of dead bark/damage at base, area has more holes, still fairly strong reaction growth
	100	<i>Amelanchier alnifolia</i>	Serviceberry	8.6		Good	Good	11	6.0		2	7	3	Bark damage at base
	101	<i>Pinus flexilis</i>	Rocky Mountain pine	8.2		Poor	Poor	12	24.0		4	7	3	One live branch, mostly dead, dripline to east was measured for singular live branch
	102	<i>Pseudotsuga menziesii</i>	Douglas-fir	46.8		Good	Good	16	24.0	Grove	2	39	3	
	103	<i>Pseudotsuga menziesii</i>	Douglas-fir	42.5		Good	Good	30	24.0	Grove	2	35	3	
24659	104	<i>Pinus sylvestris</i>	Scots pine	14.4		Good	Good	20	24.0	Grove	2	12	3	Roots in high foot traffic zone
	105	<i>Acer platanoides</i>	Norway maple	21.7		Good	Good	22	24.0	Grove	2	18	3	
13841	106	<i>Quercus palustris</i>	Pin oak	36.7		Good	Good	36	24.0	Grove	2	31	3	Past branch failures (2)
13842	107	<i>Quercus palustris</i>	Pin oak	21.6		Good	Good	24	24.0	Grove	2	18	3	
	108	<i>Tilia cordata</i>	Littleleaf linden	17.3		Good	Good	23	24.0	Grove	2	14	3	
19379	109	<i>Acer macrophyllum</i>	Bigleaf maple	34.5		Good	Good	31	24.0	Grove	2	29	3	
	110	<i>Pinus sylvestris</i>	Scots pine	8.8		Poor	Poor	8	24.0		4	7	3	Mostly dead, bark looks similar to <i>Pinus flexilis</i>
	111	<i>Thuja plicata</i>	Western redcedar	37.0		Good	Good	21	24.0		2	31	3	
13912	112	<i>Pinus nigra</i>	Austrian black pine	28.6		Good	Good	22	24.0		2	24	3	
	113	<i>Thuja plicata</i>	Western redcedar	38.2		Good	Good	23	24.0		2	32	3	
13914	114	<i>Acer macrophyllum</i>	Bigleaf maple	29.4		Good	Fair	28	24.0	Grove	2	25	3	Possible decay at base, 2 visible holes at roots, bark seems slightly off; Existing tag 328
13915	115	<i>Acer macrophyllum</i>	Bigleaf maple	21.9		Good	Good	30	24.0	Grove	2	18	3	
	116	<i>Thuja plicata</i>	Western redcedar	34.7		Good	Good	18	24.0	Grove	2	29	3	
13916	117	<i>Acer macrophyllum</i>	Bigleaf maple	28.7		Good	Good	28	24.0	Grove	2	24	3	Existing tag 330
	118	<i>Thuja plicata</i>	Western redcedar	26.8		Good	Good	15	24.0	Grove	2	22	3	
	119	<i>Thuja plicata</i>	Western redcedar	34.4		Good	Good	22	24.0	Grove	2	29	3	
	120	<i>Thuja plicata</i>	Western redcedar	27.7		Good	Good	24	24.0	Grove	2	23	3	
	121	<i>Thuja plicata</i>	Western redcedar	36.4		Good	Good	23	24.0	Grove	2	30	3	Small, old area of damage at base, strong reaction growth
	122	<i>Pinus sylvestris</i>	Scots pine	16.7		Fair	Good	16	24.0	Grove	2	14	3	Needle flagging in canopy

Table of Trees
Woodland Park Gravel Lot, Seattle, WA

SPR ID	Tree ID	Scientific Name	Common Name	DSH (inches)	DSH Multistem	Health Condition	Structural Condition	Dripline (feet)	Tier 2 Threshold	Grove	Tier Level	Tree Protection Area (feet)	Replacement Trees Required (if removed)	Notes
	123	<i>Acer macrophyllum</i>	Bigleaf maple	26.3		Good	Good	33	24.0	Grove	2	22	3	
	124	<i>Thuja plicata</i>	Western redcedar	45.4		Good	Good	22	24.0	Grove	2	38	3	Cavity at base on east side of base
30428	125	<i>Thuja plicata</i>	Western redcedar	40.2		Good	Good	23	24.0		2	34	3	Picnic table with concrete pad as base
13920	126	<i>Acer macrophyllum</i>	Bigleaf maple	27.7		Good	Good	30	24.0		2	23	3	Existing tag 335
	127	<i>Thuja plicata</i>	Western redcedar	40.3		Good	Good	20	24.0		2	34	3	
	128	<i>Cornus florida</i>	Eastern flowering dogwood	7.3		Fair	Good	22	12.0		4	6	3	Seems drought stressed, chlorotic leaves
	129	<i>Picea pungens</i>	Colorado spruce	10.1		Good	Good	12	24.0		4	8	3	Growing very densely with other trees, drip estimated
	130	<i>Abies grandis</i>	Grand fir	9.0		Good	Good	16	24.0		4	8	3	Growing densely
	131	<i>Thuja plicata</i>	Western redcedar	43.5		Good	Good	20	24.0	Grove	2	36	3	
	132	<i>Thuja plicata</i>	Western redcedar	32.5		Good	Good	17	24.0	Grove	2	27	3	
21018	133	<i>Acer macrophyllum</i>	Bigleaf maple	25.2		Good	Fair	35	24.0	Grove	2	21	3	Measured at 5.5 feet, above removed trunk
13867	134	<i>Acer macrophyllum</i>	Bigleaf maple	21.1		Good	Good	29	24.0	Grove	2	18	3	Exposed surface roots
	135	<i>Acer macrophyllum</i>	Bigleaf maple	15.5		Good	Good	29	24.0	Grove	2	13	3	
13868	136	<i>Acer macrophyllum</i>	Bigleaf maple	25.3		Good	Good	33	24.0	Grove	2	21	3	Part of grove which extends north beyond scope
13906	137	<i>Acer macrophyllum</i>	Bigleaf maple	23.6		Fair	Good	25	24.0		3	20	3	Existing tag 319
13904	138	<i>Acer macrophyllum</i>	Bigleaf maple	24.5		Good	Good	22	24.0		2	20	3	
	139	<i>Acer pseudoplatanus</i>	Sycamore maple	13.2		Good	Good	22	24.0	Grove	2	11	3	Street tree listed as 'owned by parks' in Trees for Seattle Database