

# Lincoln High School Field & Track

---

**Community Meeting: April 25, 2026**

Richard Best, SPS: Executive Director

Paige McGehee, SOJ: Project Manager

Kris Stamon, McGranahanPBK: Project Architect

Eric Gold, D.A. Hogan: Field/Landscape Architect



# Today's Agenda



- Welcome and Introductions
- Land Acknowledgement
- Today's Time Together
- SPS Joint Use Agreement
- Lower Woodland Field #2 Location
  - Option A
- 50<sup>th</sup> & Aurora Location
  - Option B
  - Option C
- Station Sessions
- Station Sessions: Report Out
- Next Steps



# Land Acknowledgment

ʔusux<sup>w</sup>tx<sup>w</sup> čəł tiit ʔal tə dišə? čəł  
ti ʔaciłtalbix<sup>w</sup> swatix<sup>w</sup>təd  
ʔə tə dʒix<sup>w</sup> ʔaciłtalbix<sup>w</sup>

Muckleshoot Indian Tribe is our treaty tribe in Seattle and King County.  
Suquamish Indian Tribe is our treaty tribe up to Elliott Bay boundaries.  
Seattle Public Schools shares a government-to-government relationship  
with both tribes.

***We would like to acknowledge that we are on the ancestral lands and  
traditional territories of the Puget Sound Coast Salish People.***

# Today's Time Together



## Meeting Objectives

- **Inform** community of project progress (40 minutes)
- **Gather** feedback on the three options presented (30 minutes)
- **Report** back summary to the group (20 minutes)
  
- **Collect** feedback to inform next steps  
(online form or comment cards)

*What additional information should we consider before making a decision about these three options?*

Lincoln High School Athletic Field  
Community Meeting Feedback



# SPS/SPR Joint Use Agreement



**Since the 1920s, SPR and the District have pooled their resources to:**

- **Meet youth and community demands for recreational opportunities,**
- **Cooperate in planning and joint use of their separately owned facilities and grounds, to the benefit of students and community members.**

While the supply will never meet the demand, this partnership has maximized the use of their respective facilities to meet student and community needs, far beyond what either could do alone. In addition to creating more opportunities for their respective constituent groups, sharing facilities has led to greater efficiencies in cost and operations.

**Priority use is established under the joint use agreement.**

# Project Drivers



## REQUIREMENTS

- Regulation-size multi-use field with lights JV & Varsity Football & JV & Varsity Soccer, etc.

Soccer

Optimal	=/> 195' x 330'
Acceptable	=/> 180' x 330'
Practice Only	=/< 180' x 300'

- Add new field capacity without displacing existing uses
  - Retain regulation-size field with lights for JV & Varsity Soccer boys & girls, Ultimate
  - Retain multi-use SPR programmable spaces
- Walkable access for Lincoln students
- Basic facilities (restrooms, storage)
- 100-seat bleacher capacity

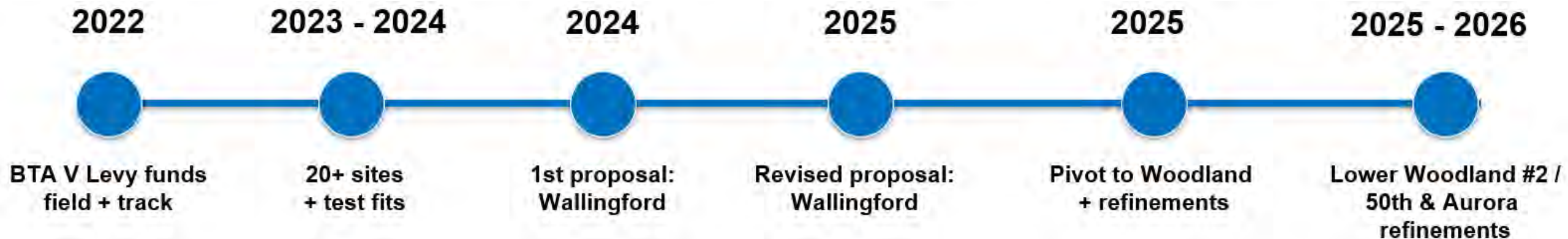
## CONSTRAINTS

- Tree and environmental impacts
- Permitting and land use requirements
- Parking / Traffic impacts
- Budget limits
- Lighting impacts

# Project History & Community Input



Community input has directly shaped this process from the start



Multiple in-person community meetings  
Reviewed **thousands of messages** across:

- **Email**
- **SPS Let's Talk portal**
- **Facebook and Nextdoor**
- **Petitions and public comments**
- **Media coverage and online discussions**

### *Changes Made in Response to Community Input:*

- Evaluated alternative sites suggested by the Wallingford Community
- Shifted to Woodland Park to balance student needs and feasibility
- Preserved key features, including BMX jumps and Soapbox Derby Hill
- Maintained parking access along Green Lake Way
- Adjusted field layout to preserve pathways and circulation
- Maintained access for dog walking and general park use

# Overview - Locations



# Field Options



Option A



Option B



Option C

# Permitting



## REQUIREMENTS (ALL OPTIONS)

- State Environmental Policy Act (SEPA)
- City of Seattle Conditional Use Permit (CUP)
- Department of Ecology NPDES
  - National Pollution Discharge Elimination System
- Building Permits (incl. Grading and Drainage)

## UNIQUE TO 50<sup>TH</sup> & AURORA (OPTION B & C)

- Environmental Impact Statement (EIS)
- Master Use Permit (MUP)
  - Type 5 Council Land Use Action

# Option A: Lower Woodland Field #2



# Option A: Lower Woodland Field #2

SOCCKER  
180'x330'



FOOTBALL +  
SOCCER  
195'x330'

# Option A: Lower Woodland Field #2



# Example: Double Fields



Edmonds Heights K-12, Edmonds, WA



Shoreline A/B Soccer Fields, Shoreline, WA

# Example: Double Fields



Ingraham High School, Seattle



Preston Athletic Fields and Park MOD 1, Issaquah

# Example: Double Fields



Central Park Fields, Issaquah



Starfire Sports, Tukwila

# Option A: Lower Woodland Field #2

## Permitting Requirements

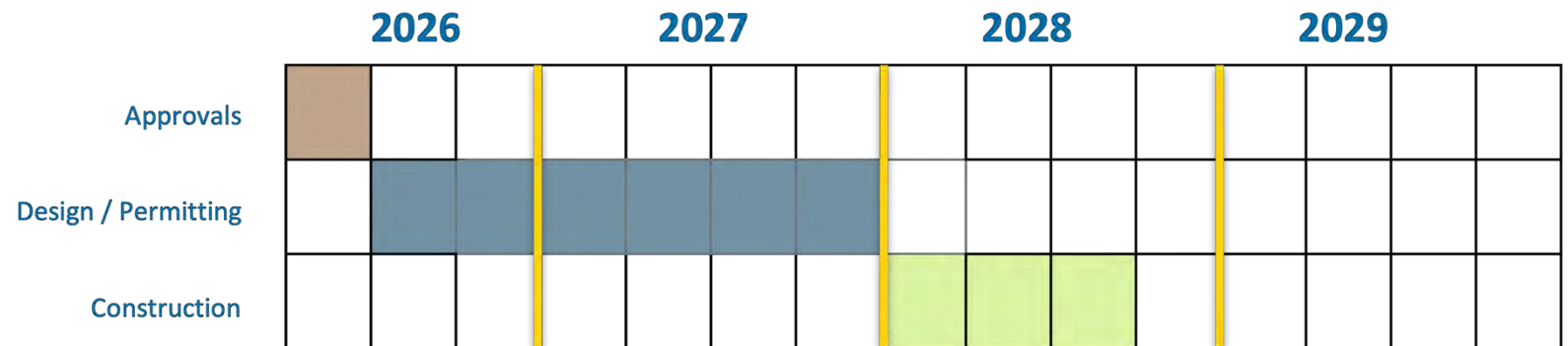
- State Environmental Policy Act (SEPA)
- Conditional Use Permit (CUP)
- Building Permit (including Grading and Drainage)

## Conceptual Costs

Estimated MACC	\$6,150,000
Estimated Total Development Cost	\$8,610,000
CCA \$/SF of playing surface	\$39.49

## Tentative Timeline

- **May 2026:** Presentation to Parks Board
- **June 2026:** Decision
- **Design & Permitting:** 18 months
- **Construction:** 9 months



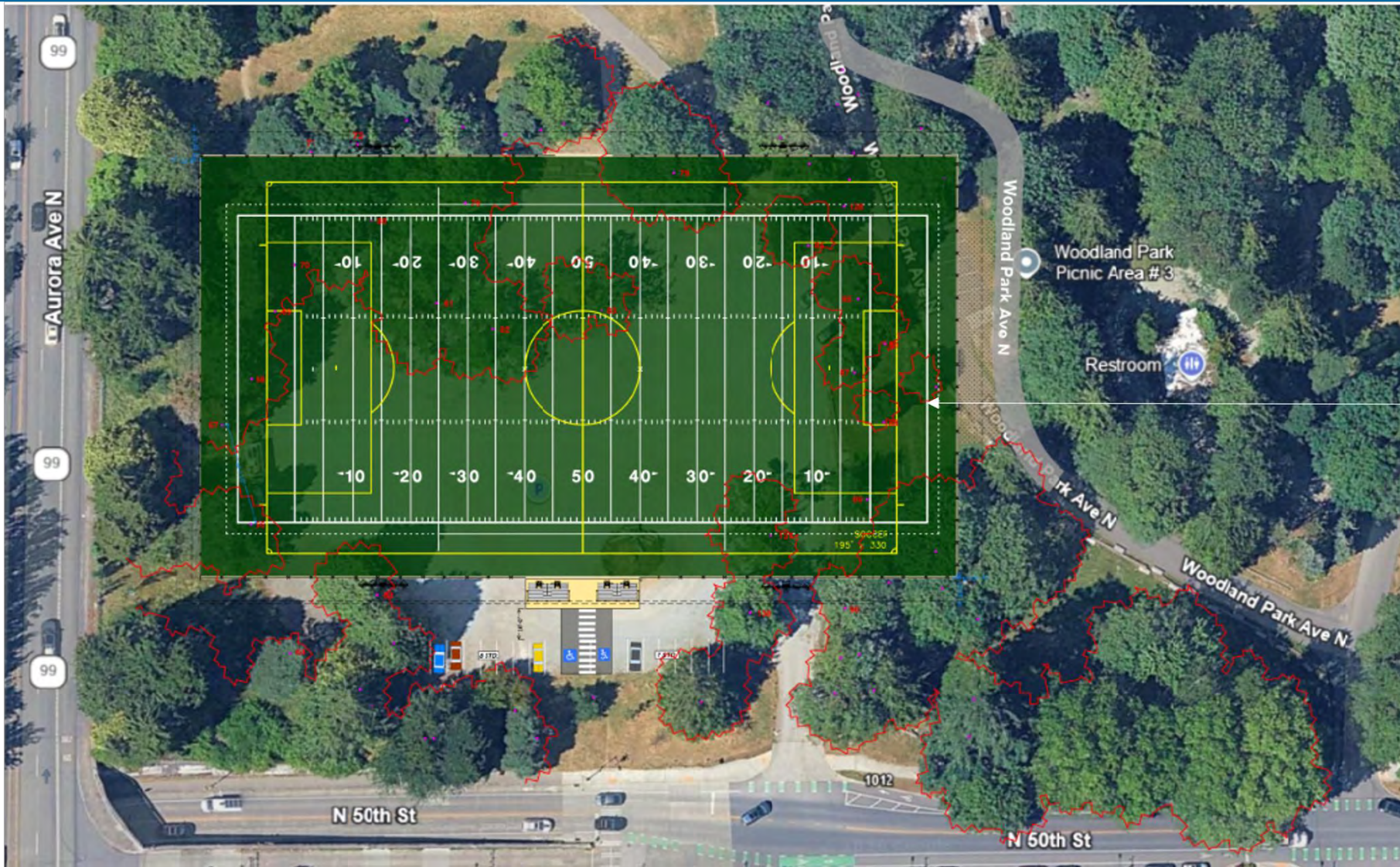
# Option B: 50<sup>th</sup> & Aurora Football Field



# Option B: 50<sup>th</sup> & Aurora Football Field



# Option B: 50<sup>th</sup> & Aurora Football Field



FOOTBALL +  
SOCCER  
195'x330'

# Option B: 50th & Aurora Football Field

## Permitting Requirements

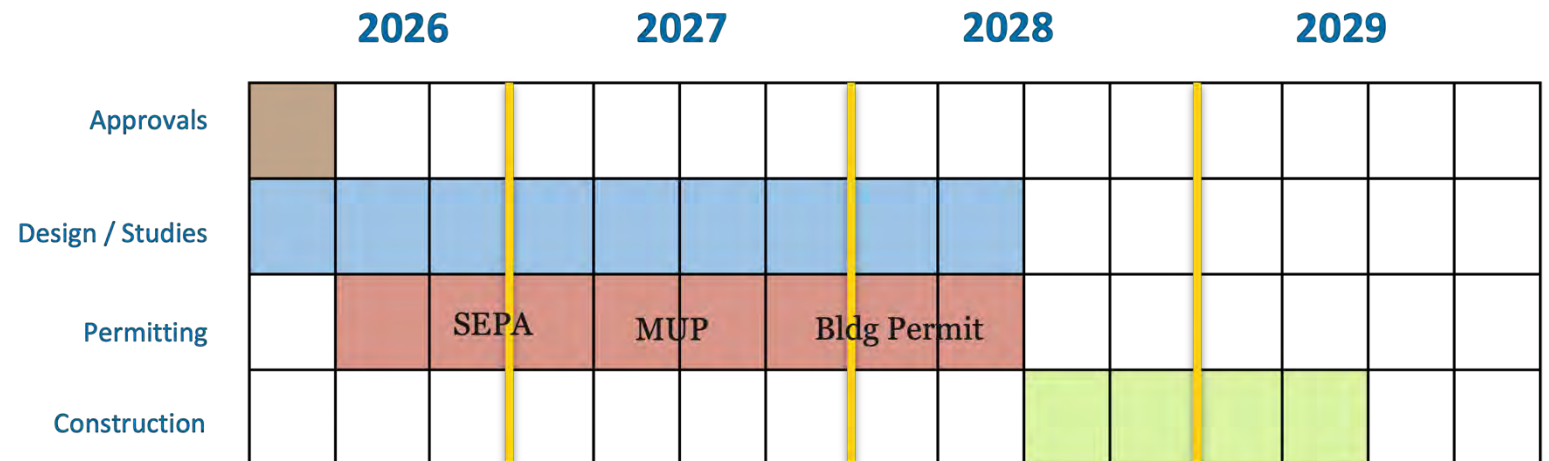
- State Environmental Policy Act (SEPA)
- **OR** Environmental Impact Statement (EIS)
- Master Use Permit (MUP)
  - Type 5 Council Land Use Action
- Department of Ecology National Pollution Discharge Elimination System (NPDES)
- Building Permit (including Grading and Drainage)

## Conceptual Costs

Estimated MACC	\$6,734,000
Estimated Total Development Cost	\$9,425,000
CCA \$/SF of playing surface	\$65.79/sf

## Tentative Timeline

- **May 2026:** Presentation to Parks Board
- **Approvals:** Summer 2026
- **Design / Studies:** Through mid-2028
- **Permitting:** 24 months
- **Construction:** 12 months



# Option C: 50<sup>th</sup> & Aurora Soccer with Football at Lower Woodland



# Option C: 50<sup>th</sup> & Aurora Soccer Field



18' retaining wall

4' retaining wall

20'/10' fence

# Option C: Football improvements at Lower Woodland Field #2



# Option C: 50<sup>th</sup> & Aurora Soccer Field



SOCCER  
180'x300'

# Option C: Lower Woodland Football



FOOTBALL +  
SOCCER  
195'x330'

# Option C: 50th & Soccer Field



## Permitting Requirements

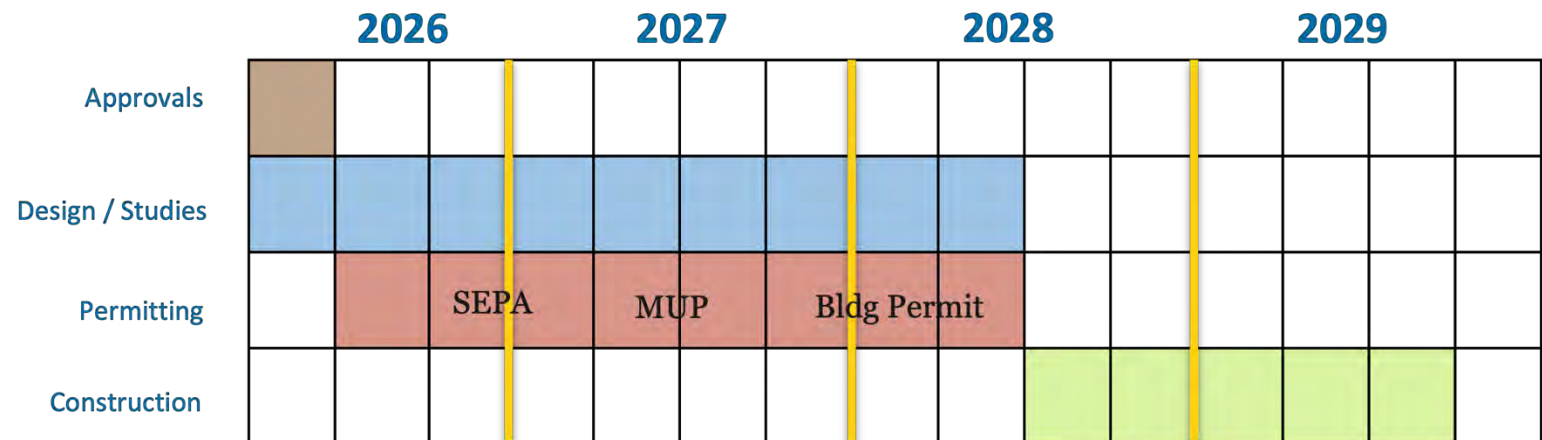
- State Environmental Policy Act (SEPA)
- **OR** Environmental Impact Statement (EIS)
- Master Use Permit (MUP)
  - Type 2 Council Land Use Action
- Department of Ecology National Pollution Discharge Elimination System (NPDES)
- Building Permit (including Grading and Drainage)

## Conceptual Costs

<b>Field 1 N 50th</b>	
Estimated MACC	\$4,775,000
Estimated Total Development Cost	<b>\$6,685,000</b>
CCA \$/SF of playing surface	\$72.27
<b>Field 2</b>	
Estimated MACC	\$3,580,000
Estimated Total Development Cost	<b>\$4,780,000</b>
CCA \$/SF of playing surface	\$41.23
<b>TOTAL:</b>	<b>\$11,465,000</b>

## Tentative Timeline

- **May 2026:** Presentation to Parks Board
- **Approvals:** Summer 2026
- **Design / Studies:** Through mid - 2028
- **Permitting:** 24 months
- **Construction:** 15 months



# Matrix of Options



	Field Dimensions	Tree Impacts	Stormwater	Approximate Grading Impacts	Adverse Impact to Other Users	Parking Impacts	Estimated Completion	Estimated Cost
<b>Option A Soccer &amp; Football @ Lower Woodland</b>	Reg football; 195 x 330 soccer, 180 x 330 soccer, 180 x 330, lacrosse, flag football and Ultimate	<b>8</b> Removed  <b>24</b> to be Replaced	Upgrades to existing stormwater system	13K cubic yards (cy) excavation/ 1.5'- 2' curb / walls	Compromised field size for Adult Rec & HS Gameplay  Field offline for one year  Tighter proximity for all	<b>0</b> Removed	Fall '28	<b>\$8,610,000</b> (\$39.49 SF)
<b>Option B Football / Soccer @ 50th &amp; Aurora</b>	Reg football/ 195 x 330 soccer and Existing Lower Woodland Field 2	<b>40</b> Removed  <b>120</b> to be Replaced	New stormwater system	35K cy excavation/ 4' & 18' retaining walls	Parking loss for Zoo  Impacts to staging and parking for cross-country & cyclo-cross	<b>130</b> Removed <b>33</b> Replaced	Fall '29	<b>\$9,425,000</b> (\$65.79 SF)
<b>Option C Soccer @ 50th &amp; Aurora + Football @ Lower Woodland</b>	180 x 300 soccer and Reg football/ 195 x 330 soccer	<b>25</b> Removed  <b>75</b> to be Replaced	New stormwater system	22.5 K cy excavation/ 4' & 18' retaining walls and 8K cy excavation/ no retaining walls	Parking loss for Zoo  Impacts to staging and parking for cross-country & cyclo-cross	<b>117</b> Removed <b>13</b> Retained	Fall '29	<b>\$11,465,000</b> (\$72.27 SF and \$41.30 SF)

# Changes in Response to Community Feedback

## Wallingford

- **Adjusted to a half-size field** to explore lower-impact alternatives
- **Tested multiple layout configurations** to preserve trees and open space
- **Ultimately moved to a different location** based on community input and feasibility constraints

## Option A

- **Preserved key community assets** by shifting the field east to retain BMX jumps and Soapbox Derby Hill
- **Reduced parking impacts** by adjusting bleacher size and access points
- **Minimized pathway disruption** by adjusting field width and alignment
- **Developed a tree mitigation strategy** to address environmental concerns
- **Refined field placement** to maintain north-south park circulation
- **Maintained access for dog walking and general park use** around the field
- **Coordinated with community groups (e.g., cross-country)** to preserve key routes and uses

## Option B

- **Reduced hardscape and built elements** to limit footprint and tree impacts
- **Evaluated design feasibility and site constraints**, including grading and environmental impacts
- **Determined tradeoffs** related to usability, cost, and constructability

## Option C

- **Evaluated location** based on community input
- **Developed concept layouts** to understand feasibility and impacts
- **Identified significant constraints**, including grading, environmental impacts, constructability and cost
- **Advanced analysis** to ensure all community-suggested locations were fully considered

# SPS & SPR Program Goals



	Girls Flag Football	Boys JV Football Practice	Boys JV Football Games	Boys Varsity Football Practice	Youth Soccer	Adult Rec Leagues	Girls JV / C Soccer Games	Girls JV / C Soccer Practice	Girls Varsity Soccer Practice	Girls Varsity Soccer Games	Boys JV / C Soccer Games	Boys JV / C Soccer Practice	Boys Varsity Soccer Practice	Boys Varsity Soccer Games	Lacrosse	Ultimate
Option A	✓	✓	✓	✓	✓	✓	✓	✓	✓	✓	✓	✓	✓	✓	✓	✓
Option B	✓	✓	✓	✓	✓	✓	✓	✓	✓	✓	✓	✓	✓	✓	✓	✓
Option C	✓	✓	✓	✓	✓	✓	✗	✓	✓	✗	✓	✓	✓	✓	✗	✗

# Overview



## Option A



## Option B



## Option C

### Key Benefits

- Centralized – co-curricular use
- Schedule efficiency
- Preserves parking and cross-country use

- No disruption to Lower Woodland
- New standalone facility

- Preserves trees on Green Lake Way
- New standalone facility
- Less crowding at Lower Woodland

### Key Challenges

- Trees (8)
- Run-off clearances
- Crowding

- Trees (40+/-)
- Parking
- Impacts to Cross-country
- Add lighting and activity

- Trees (25+/-)
- Program, Parking
- Cost
- Added lighting and activity

# Station Sessions



Given the information presented:

**What additional information should we consider before making a decision about these three options?**

- Please submit feedback by using online form (QR code) or comment card

Lincoln High School Athletic Field  
Community Meeting Feedback





# Station Sessions: Report Out

# Moving Ahead



- Next Steps
  - SPS and SPR review feedback
  - SPS and SPR consult to select final location
- Future
  - Design
  - Permitting
  - Construction
  - Play Ball!



Option A



Option B



Option C

Thank you!

