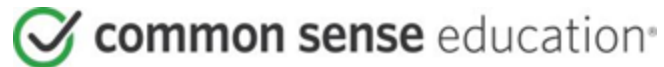


GRADES 3-5

What Is AI?

Modified by the SPS Digital Learning
Team from the original Common Sense
Education materials





Essential Questions

What is *artificial intelligence*?
What are its potential benefits
and problems?



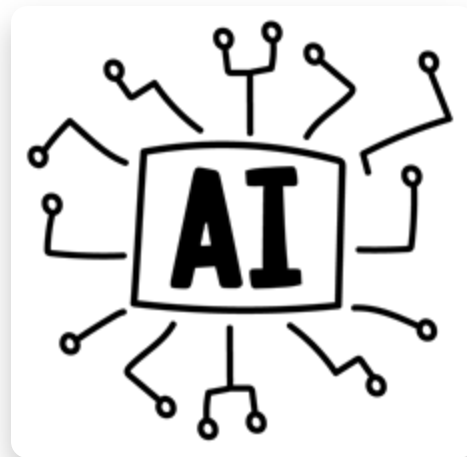
LEARNING OBJECTIVES

- 1 Define what *artificial intelligence* (AI) is.
- 2 Understand what makes *generative AI* unique.
- 3 Reflect on the *benefits and problems* of generative AI.



WARM-UP POLL

Have you ever heard
about artificial
intelligence, or AI?





FOLLOW-UP

Where have you heard
or seen AI?

What are some examples
of things you think AI can
do?





WATCH

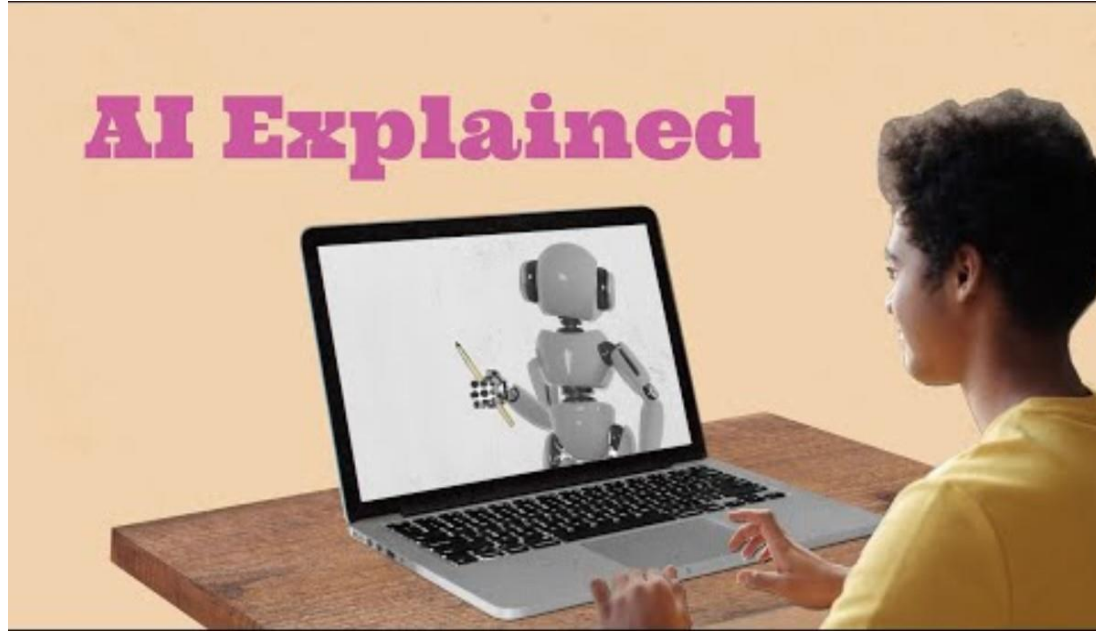
We're going to watch a video that explains what AI is. And we'll learn about a specific kind of AI that is quite popular right now, called ***generative AI***.

Complete the active viewing guide as you watch the video.





WATCH



- What is artificial intelligence?
- How does artificial intelligence learn?
- What makes "generative AI" unique?

To watch the video on the Common Sense Education website, [click here](#).



commonsense.org/education

Shareable with attribution for noncommercial use. Remixing is permitted.



Key Vocabulary

Artificial Intelligence

a computer program that can perform tasks that typically require human intelligence



EXPLAIN

Artificial intelligence learns by analyzing ***data***, or information. The more data you feed to an AI, the better it can become at completing a task.



Key Vocabulary

Generative AI

a type of AI that can create content,
including text, images, and audio



TAKE A STAND

Given what you know, do you think generative AI will be *more helpful* or *more harmful* to people and our lives?

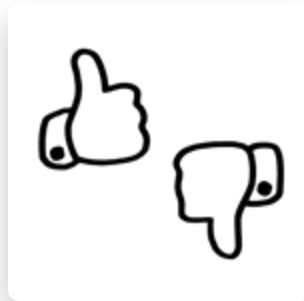
Pick the side that you agree with the most. Be sure to have at least one reason to support your opinion.





REFLECT

How could generative AI be harmful to society?





REFLECT

How could generative AI be harmful to society?

- **Misinformation:** It could be used to create fake articles, videos, or images that are convincing and can be shared easily.
- **Plagiarism and copyright issues:** It might have learned using data without permission, or it might not give credit to its sources.
- **Bias:** It might be trained on biased or incomplete information.
- **Other harms:** Impersonation, cyberbullying, privacy threats, loss of jobs for people, environmental impact, etc.



REFLECT

How could generative AI be helpful to society?





How could generative AI be helpful to society?

- **Efficiency:** People could use it to be more productive in their jobs (data entry, writing, analyzing information, etc.)
- **Creativity:** Could produce high-quality creative content, including art, music, and writing.
- **Learning:** It can help people learn new skills.
- Other helpful contributions?



CLOSING REFLECTION

Balancing the potential benefits and problems of a new technology can be tricky. When it comes to AI and generative AI, we must ***think critically about its impacts*** and remember that we're each in control of how we use it.



⇒ WE CAN THRIVE IN A
DIGITAL WORLD. ⇐