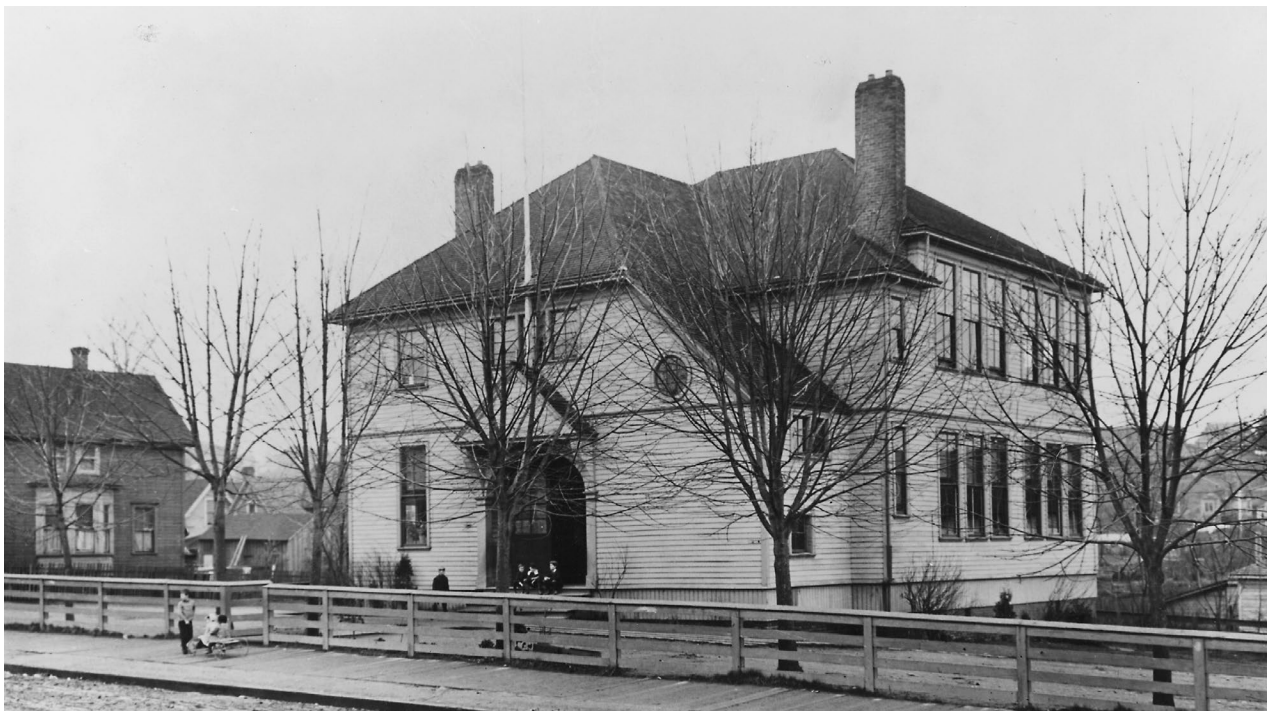


Olympic



Olympic, ca. 1915 SPSA 088-50

In October 1890, the Seattle School Board took steps toward the construction of a smaller building, called Rainier Annex School, to the southeast of Rainier School. Olympic School operated for over 18 years as an annex to its larger neighbor. It provided classroom space for grades 1-4, which could not be accommodated at Rainier School, with a peak enrollment of 176 pupils in 1903-04. Olympic closed for several years, beginning in 1909, but reopened in 1914 as the Olympic Special School and served another 18 years as home to special, or adjustment classes. In 1917, special education classes from the Washington School transferred to the Olympic Special School (see Washington). In 1929, the name of the program changed to the Olympic Adjustment Center. The program was closed in 1932 and the building was demolished in 1937. The site was sold a few years later.

As of 2020, the site contains a church that was constructed in 1981 for the Faith Temple of God, but is now owned by Saint Gabriel Catholic Church and sits vacant.

Details:

Name: **Olympic School**
 Location: Orange & Bush Streets
 (949 Martin Luther
 King Jr Way South)
 Building: 4-room wood
 Architect: Walter Smedley
 Site: 0.37 acres

1891: Opened in January as annex to Rainier
 1909: Closed to regular classes in spring
 1914: Opened as Olympic Special School
 1929: Name changed to Olympic Adjustment Center
 1932: Closed
 1937: Building demolished
 1939-40: Site sold
 1981: Church constructed for Faith Temple of God
 2020: Church building vacant