



# Whitman Middle School, Portable Classrooms Demolition Project

## Supplemental Appendix E to Final Project SEPA Checklist

Seattle Public Schools is committed to making its online information accessible and usable to all people, regardless of ability or technology. Meeting web accessibility guidelines and standards is an ongoing process that we are consistently working to improve.

While Seattle Public Schools endeavors to only post documents optimized for accessibility, due to the nature and complexity of some documents, an accessible version of the document may not be available. In these limited circumstances, the District will provide equally effective alternate access.

For questions and more information about this document, please contact the following:

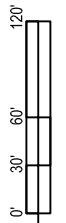
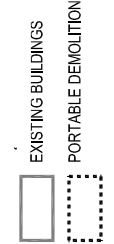
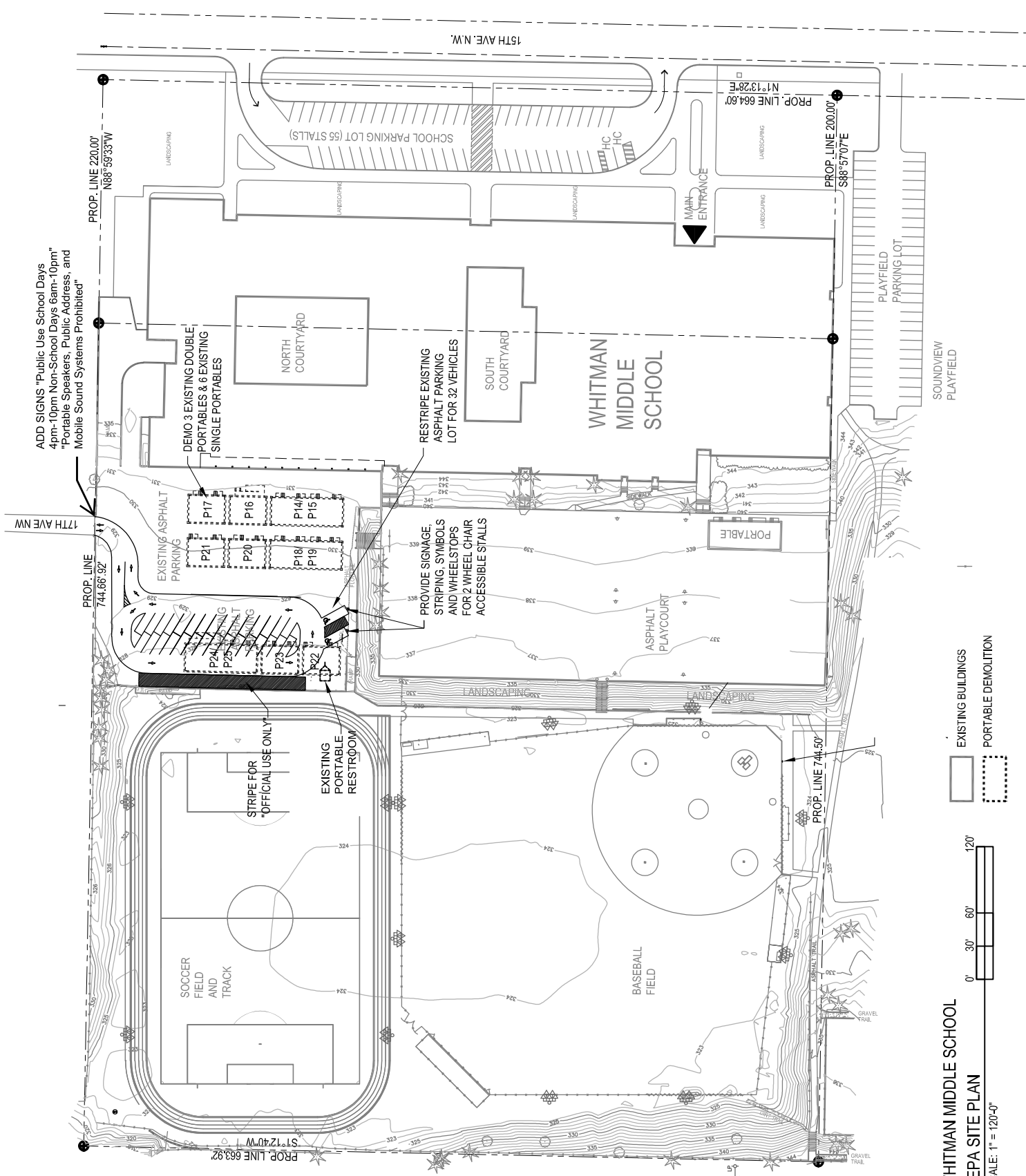
Tom Gut  
Senior Project Manager  
[twgut@seattleschools.org](mailto:twgut@seattleschools.org)

**While the Whitman Middle School Portable Classrooms Demolition Project State Environmental Policy Act (SEPA) Project Checklist is accessible and Americans with Disabilities Act (ADA) compliant, the**

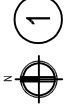
figures contained in this appendix which support the Checklist contains material that is not accessible. The following is a description of what is contained in the figures and appendix:

**Appendix E: Updated Site Plan**

Appendix E is a drawing depicting the features with the property lines of the Whitman Middle School site including the main school building, parking lots, playfields, and the location of the portable classrooms to be demolished. This Updated Site Plan also includes features that were not included in earlier versions of the Project's site plan including parking lot markings, signage related to parking lot use, and the presence of a portable toilet. The portable classrooms and parking lot are generally located in an area west of the north end of the main building.



WHITMAN MIDDLE SCHOOL  
SEPA SITE PLAN  
SCALE: 1" = 120'-0"



1