



Parent Advisory Committee

January 19, 2023 Presentation

Seattle Public Schools is committed to making its online information accessible and usable to all people, regardless of ability or technology. Meeting web accessibility guidelines and standards is an ongoing process that we are consistently working to improve.

While Seattle Public Schools endeavors to only post documents optimized for accessibility, due to the nature and complexity of some documents, an accessible version of the document may not be available. In these limited circumstances, the District will provide equally effective alternate access.

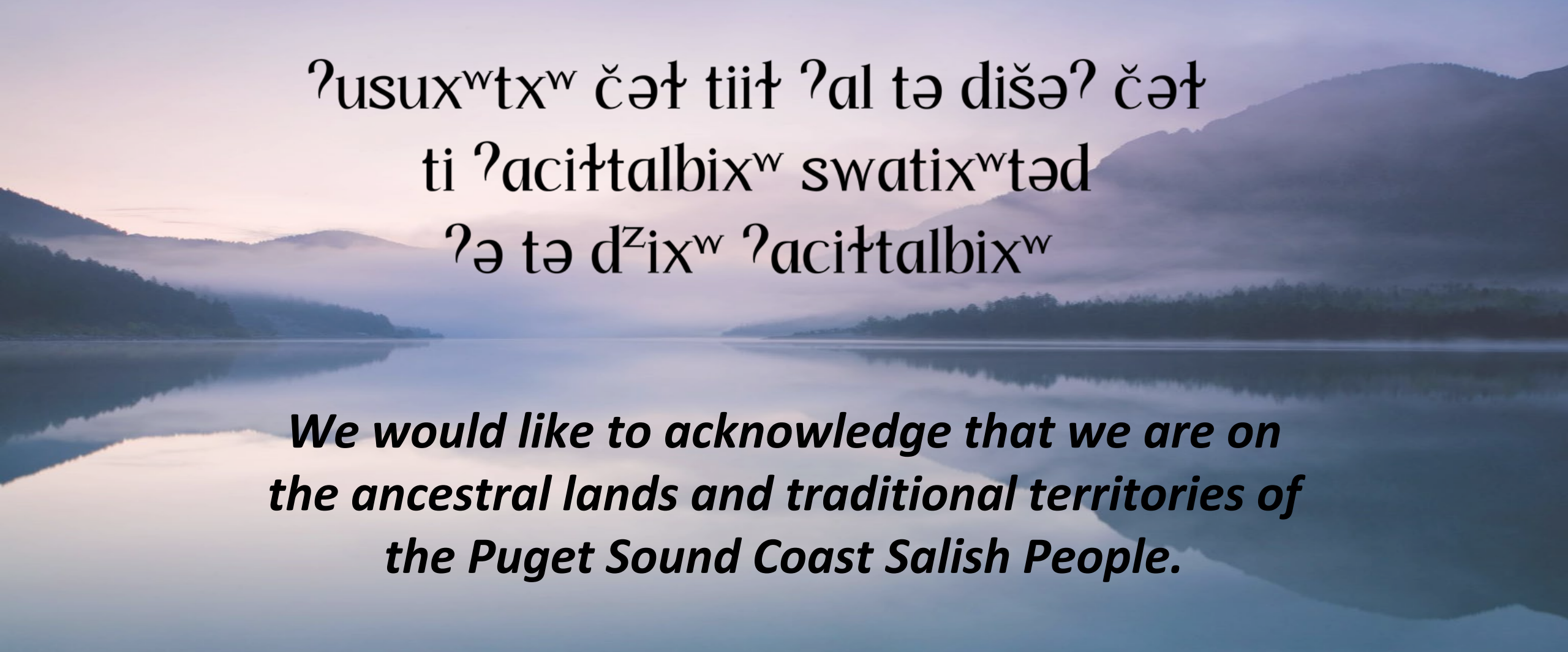
For questions and more information about this document, please contact the following:

Family Partnerships
familypartnerships@seattleschools.org



Welcome to the PAC!

January 19, 2023



ʔusux^wtx^w čəł tiit ʔal tə dišə? čəł
ti ʔaciłtalbix^w swatix^wtəd
ʔə tə d^zix^w ʔaciłtalbix^w

***We would like to acknowledge that we are on
the ancestral lands and traditional territories of
the Puget Sound Coast Salish People.***

Land Acknowledgement

5:30 PM **Welcome & Intro Activity**

5:40 PM **Context for the PAC**

6:10 PM **Group Agreements & Family Engagement Principles**

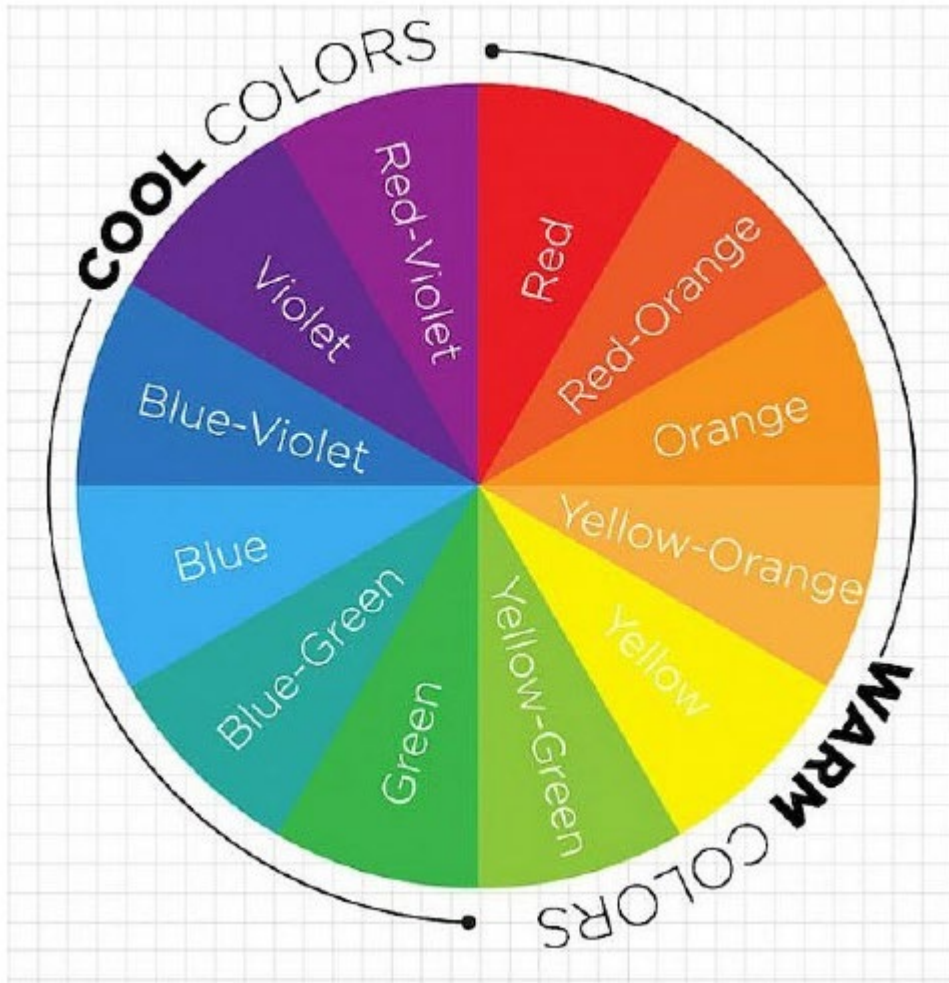
6:40 PM *5-minute break*

6:45 PM **Logistics & Housekeeping**

7:25 PM **Wrap-Up & Closing Activity**

7:30 PM **Dismissal**

Agenda



Intro Activity - What color is your heart today and why?

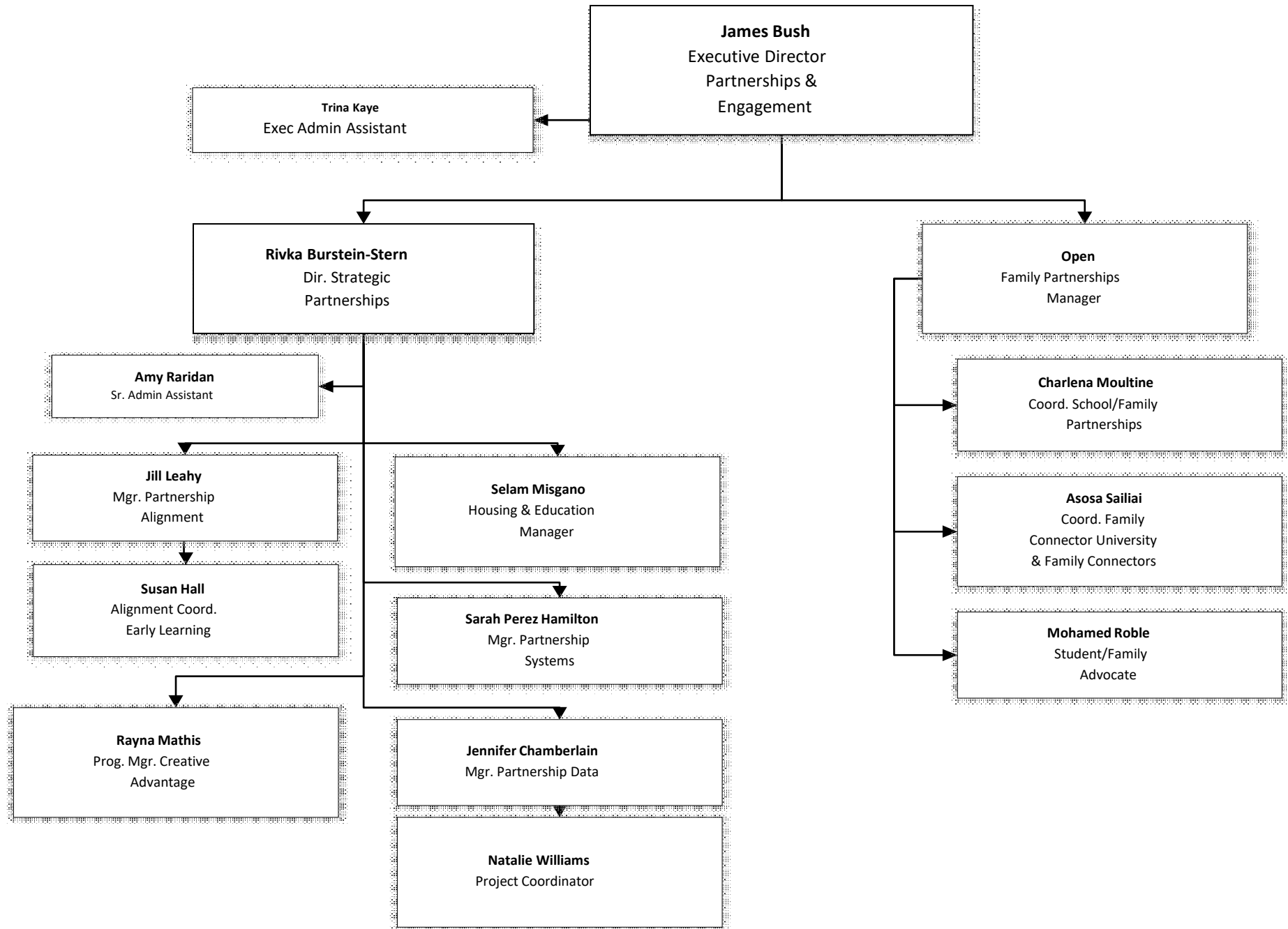
- Who You Are: Responses from the Kick-Off
- Who We Are: Overview of Partnerships & Engagement Division
- What We Can Do Together: Mission / Vision / Charge / Role

Context for the PAC

“What are the primary motivators that prompted you to join the PAC?”



Who We Are



Purpose & Process

A decorative graphic on the left side of the slide consisting of two vertical bars: a wide blue bar and a narrower yellow bar to its right.

Group Agreements



DALAI LAMA XIV

Team Norms

We arrive with open hearts and minds and a growth mindset.

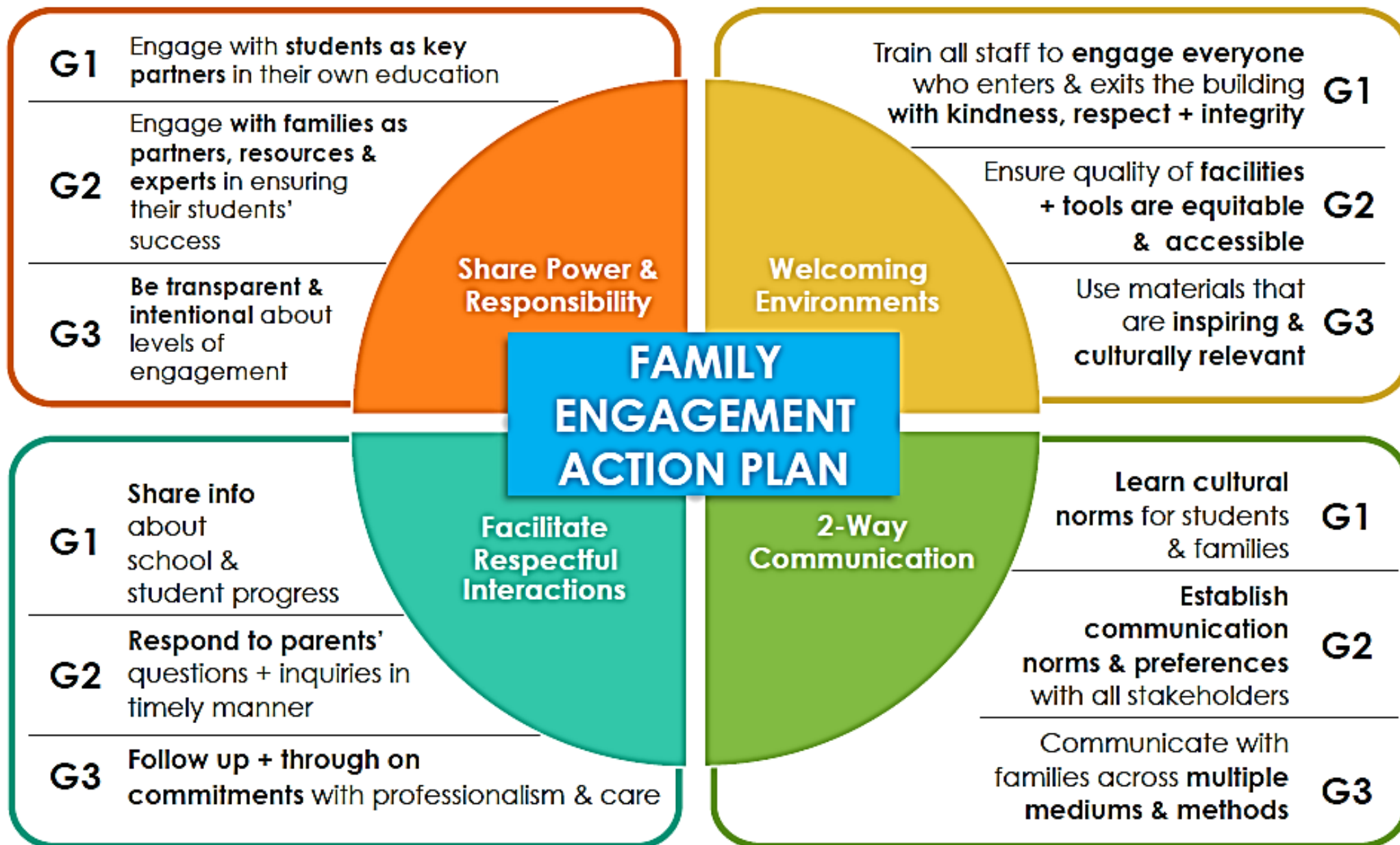
This is a safe, equitable space for learning and sharing.

Everyone's ideas and participation are valued.

We share a commitment to community and learning together.

We have an attitude of gratitude.

The 4 Pillars of School-Family Partnerships



The 4 Pillars of School-Family Partnerships

G1

Engage with **students as key partners** in their own education

G2

Engage with families as **partners, resources & experts** in ensuring their students' success

G3

Be transparent & intentional about levels of engagement

Share Power & Responsibility

The 4 Pillars of School-Family Partnerships

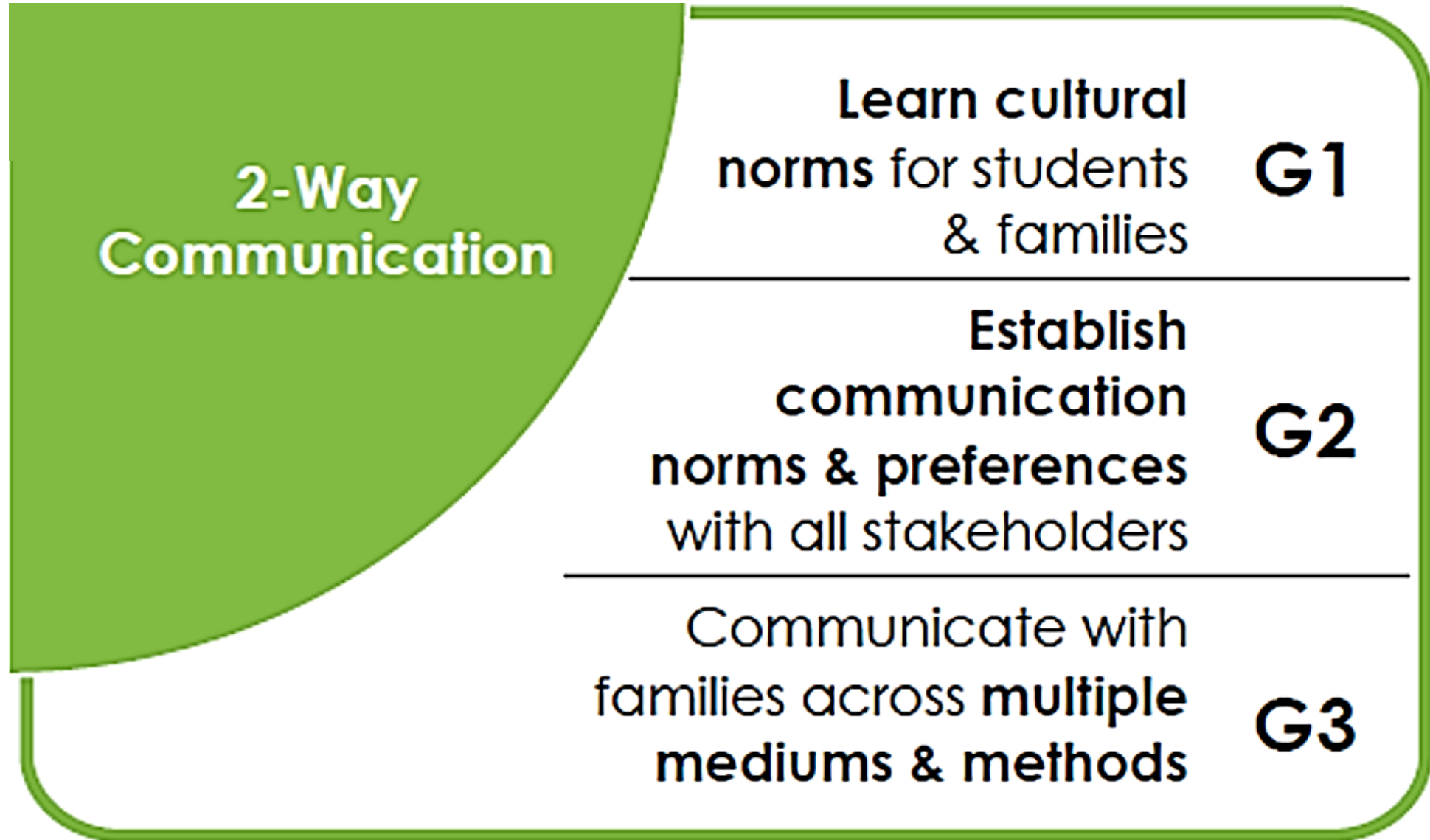
Welcoming Environments

Train all staff to **engage everyone**
who enters & exits the building
with kindness, respect + integrity **G1**

Ensure quality of facilities
+ tools are equitable **G2**
& accessible

Use materials that
are **inspiring &** **G3**
culturally relevant

The 4 Pillars of School-Family Partnerships



The 4 Pillars of School-Family Partnerships

G1

Share info
about
school &
student progress

G2

Respond to parents'
questions + inquiries in
timely manner

G3

Follow up + through on
commitments with professionalism & care

**Facilitate
Respectful
Interactions**



The Dual Capacity-Building Framework

The Challenge

Educators

- Have received minimal training
- May have developed deficit mindsets

Families

- Have had negative past experiences with schools/educators

Essential Conditions

Process Conditions

- Relational
- Linked to Learning
- Asset-based
- Culturally R&R
- Collaborative
- Interactive

Organizational Conditions

- Systemic
- Integrated
- Sustained

Policy & Program Goals

Build and enhance the capacity of educators and families in the "4 C" areas:

- **Capabilities** (skills + knowledge)
- **Connections** (networks)
- **Cognition** (shifts in beliefs/values)
- **Confidence** (self-efficacy)

Capacity Outcomes

Effective partnerships that support students and school improvement

Educators are empowered to:

- Connecting FE to L&D
- Engage families as co-creators
- Honor families' funds of knowledge
- Create welcoming cultures

PARTNERSHIPS

Families are engaged in diverse roles:

- Co-creators
- Advocates
- Supporters
- Monitors, etc.

1

2

3

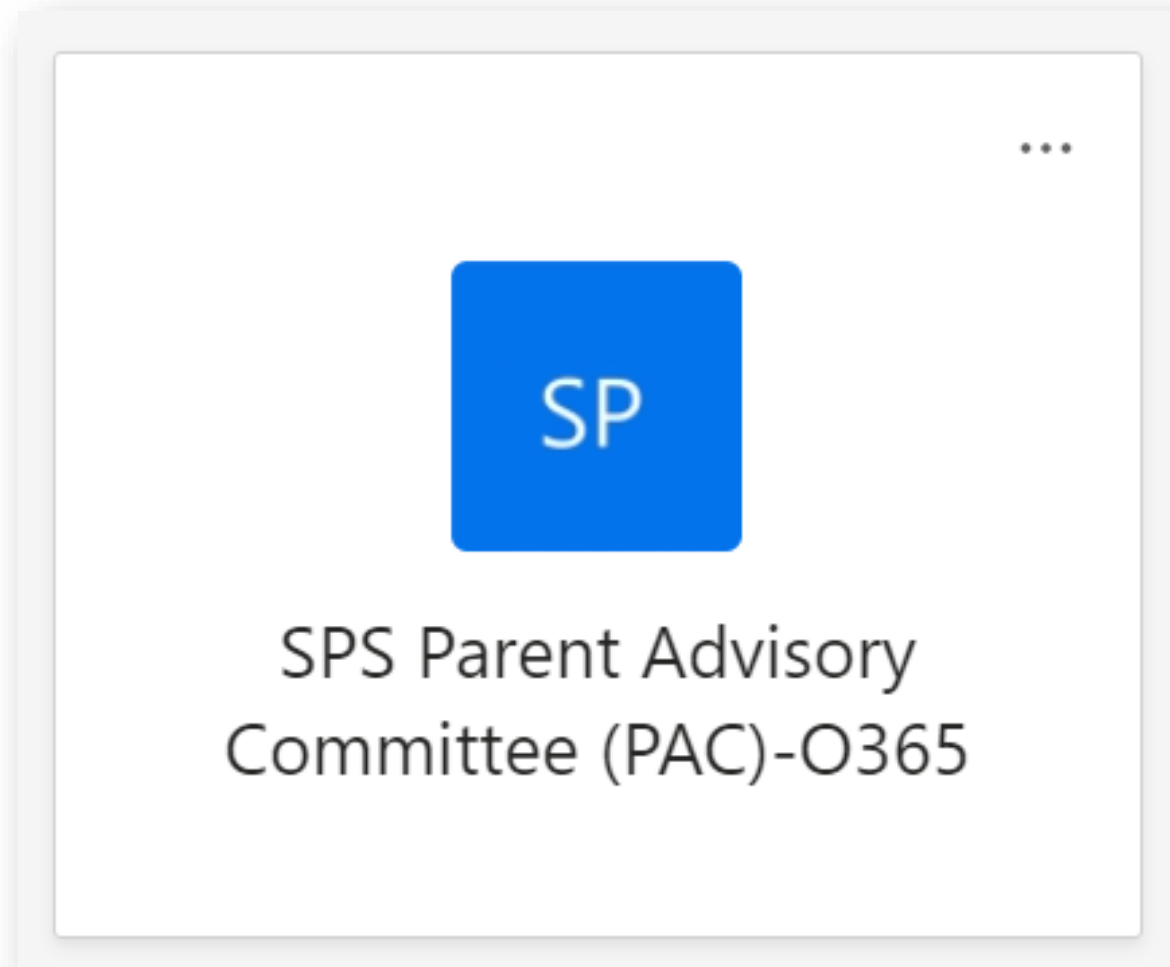
4

5

5 Minute Break

OPMA Guidelines & District Policy 4110, 4110SP

Logistics



Logistics – MS Teams Channel & SharePoint

SP

SPS Parent Advisory Committee (PAC)-O365

SP

SPS Parent Advisory Committee (PAC)-O365

Home

Conversations

Documents

Shared with us

Notebook

Pages

Site contents

+ New

Upload

Edit in grid view

Share

Documents > General

	Name	Modified
Folder	Board Policies & Procedures	4 hours ago
Folder	Meeting Agendas & Summaries	4 hours ago
Folder	Resources	4 hours ago



Logistics – PAC Steering Committee

The PAC Steering Committee serves as a critical liaison for District Staff, providing support and guidance on the work and progress of the PAC - District collaboration. Key involvements of the steering committee are the direction, scope, and accountability regarding issues presented during PAC meetings.

- The Steering Committee meets one week in advance of the general PAC meeting to discuss each of the aspects above and help set - or reset - our monthly agenda. We do this through reflective dialogue and collaborative analysis.
- Monthly time requirement: 2nd Wednesday of each month, 3:30-4:15pm via MS Teams.
- Serving on the Steering Committee is a 1-year term. In this circumstance, you would be serving until August 2024.
- If you agree to join the Steering Committee, consistent attendance and participation is a **must** so that we can assure we are intentionally moving the work forward and that we are not dropping the ball on key issues.

Logistics – PAC Steering Committee



📄 Student Family Portal

I want to... ▾

Search...



Family Resources

Enrollment

Academics

Schools

Departments

About

Calendars and News

Seattle Public Schools / Departments / Family Partnerships / The Parent Advisory Committee



The Parent Advisory Committee

Overview

The Seattle School Board and Superintendent place a top priority in creating and maintaining a district-wide climate that encourages parent and family engagement.

The goal is to develop and sustain partnerships that support student learning and positive child and youth development in all schools. Board Policy 4129 and Superintendent Procedure 4129SP incorporate a series of procedures that set out expectations for the way that schools and the School District will relate to parents and families.

Among other provisions, the policy establishes an on-going Parent Advisory

🔗 Family Partnerships

Department Contact

familypartnerships@seattleschools.org

Prompts to help guide your bio:

First and last name

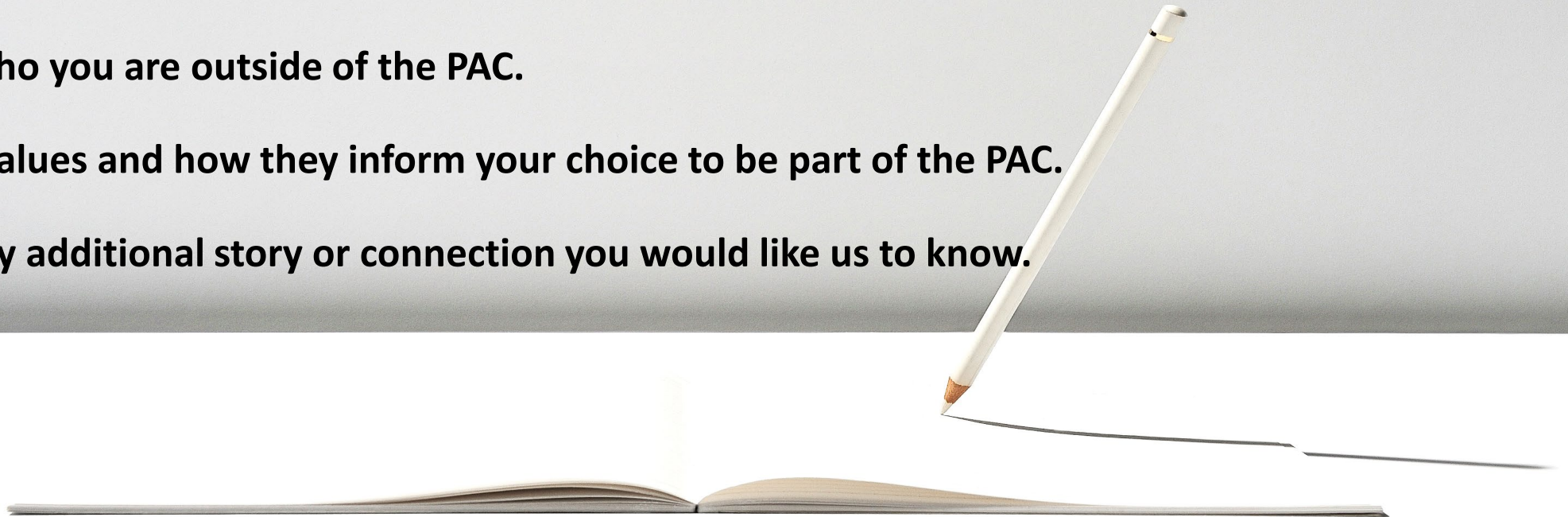
Pronouns

School(s) your student(s) attend(s)

Briefly tell us who you are outside of the PAC.

Describe your values and how they inform your choice to be part of the PAC.

Please share any additional story or connection you would like us to know.



**Please email your bio and pic to
familypartnerships@seattleschools.org by our next PAC meeting**



Questions & Responses

Looking ahead...

- **PAC Meeting** – full group
 - February 16, 5:30-7:30pm (MS Teams & In Person)
 - *3rd Thursday of the month*
- **PAC Steering Committee** – small group
 - February 8, 3:30-4:15pm (MS Teams)
 - *2nd Wednesday of the month*

Wrapping-Up

As we end our time together...

**What is your one-word mantra
for 2023?**

Closing