



# Cleveland HS STEM Discipline Flowchart

Seattle Public Schools is committed to making its online information accessible and usable to all people, regardless of ability or technology. Meeting web accessibility guidelines and standards is an ongoing process that we are consistently working to improve.

While Seattle Public Schools endeavors to only post documents optimized for accessibility, due to the nature and complexity of some documents, an accessible version of the document may not be available. In these limited circumstances, the District will provide equally effective alternate access.

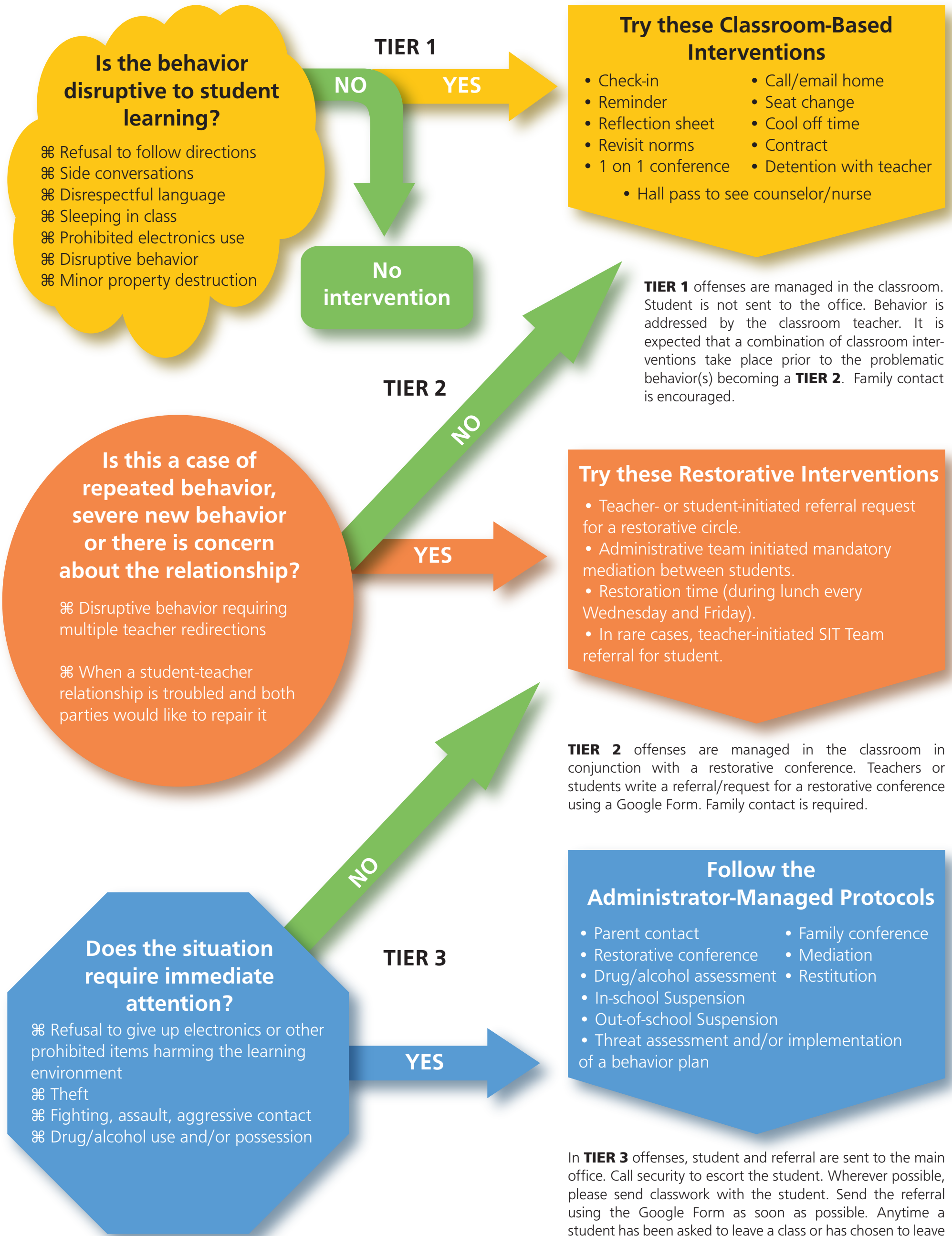
For questions and more information about this document, please contact the following:

Polo DeCano  
Consulting Teacher, Restorative Practices Program  
[padecano@seattleschools.org](mailto:padecano@seattleschools.org)

# CLEVELAND STEM HIGH SCHOOL

## Problem Behavior & Referral Flowchart

How to determine if negative behavior should be classroom or administrator managed



**TIER 1** offenses are managed in the classroom. Student is not sent to the office. Behavior is addressed by the classroom teacher. It is expected that a combination of classroom interventions take place prior to the problematic behavior(s) becoming a **TIER 2**. Family contact is encouraged.

**TIER 2** offenses are managed in the classroom in conjunction with a restorative conference. Teachers or students write a referral/request for a restorative conference using a Google Form. Family contact is required.

In **TIER 3** offenses, student and referral are sent to the main office. Call security to escort the student. Wherever possible, please send classwork with the student. Send the referral using the Google Form as soon as possible. Anytime a student has been asked to leave a class or has chosen to leave a class in the course of a discipline issue, teachers must contact the family within 24 hours. If in-school suspension or out-of-school suspension is determined to be a consequence, Ray or Catherine will facilitate the process.

The Cleveland way is to resolve conflict using restorative intervention practices. Some offenses may **NOT** result in punitive punishment.