



Community Update Meeting

Montlake Modernization and Addition Project Presentation: Dec. 13, 2022

Seattle Public Schools is committed to making its online information accessible and usable to all people, regardless of ability or technology. Meeting web accessibility guidelines and standards is an ongoing process that we are consistently working to improve.

While Seattle Public Schools endeavors to only post documents optimized for accessibility, due to the nature and complexity of some documents, an accessible version of the document may not be available. In these limited circumstances, the District will provide equally effective alternate access.

For questions and more information about this document, please contact the following:

Richard Best
Director, Capital Projects and Planning
rlbest@seattleschools.org

This presentation describes the planning process and schematic designs for the John Rogers Elementary School replacement project.

Meeting agenda:

- Project Background
- Centering Equity and Strategic Plan Goals
- Historic Approach and Neighborhood Scale
- Site and Floor Plans
- Building Character and Design
- Healthy Learning and Teaching Environments
- Next Steps
- Q+A

Community Design Update

Montlake Elementary School
Seattle Public Schools

December 13th, 2022





Land Acknowledgment

We would like to show our respect and acknowledge the Puget Sound Coast Salish peoples, past and present, on whose lands we gather today. The Suquamish Tribe and Muckleshoot Indian Tribe are the federally recognized Indian tribes of greater Seattle, under the treaties of Point Elliott and Medicine Creek.

Equity Moment



Seattle University's taq^wšəblu Vi Hilbert Ethnobotanical Garden

Agenda

- Project Background
- Centering Equity + Strategic Plan Goals
- Historic Approach + Neighborhood Scale
- Site + Floor Plans
- Building Character + Design
- Healthy Learning + Teaching Environments
- **Next Steps**
- **Q+A**



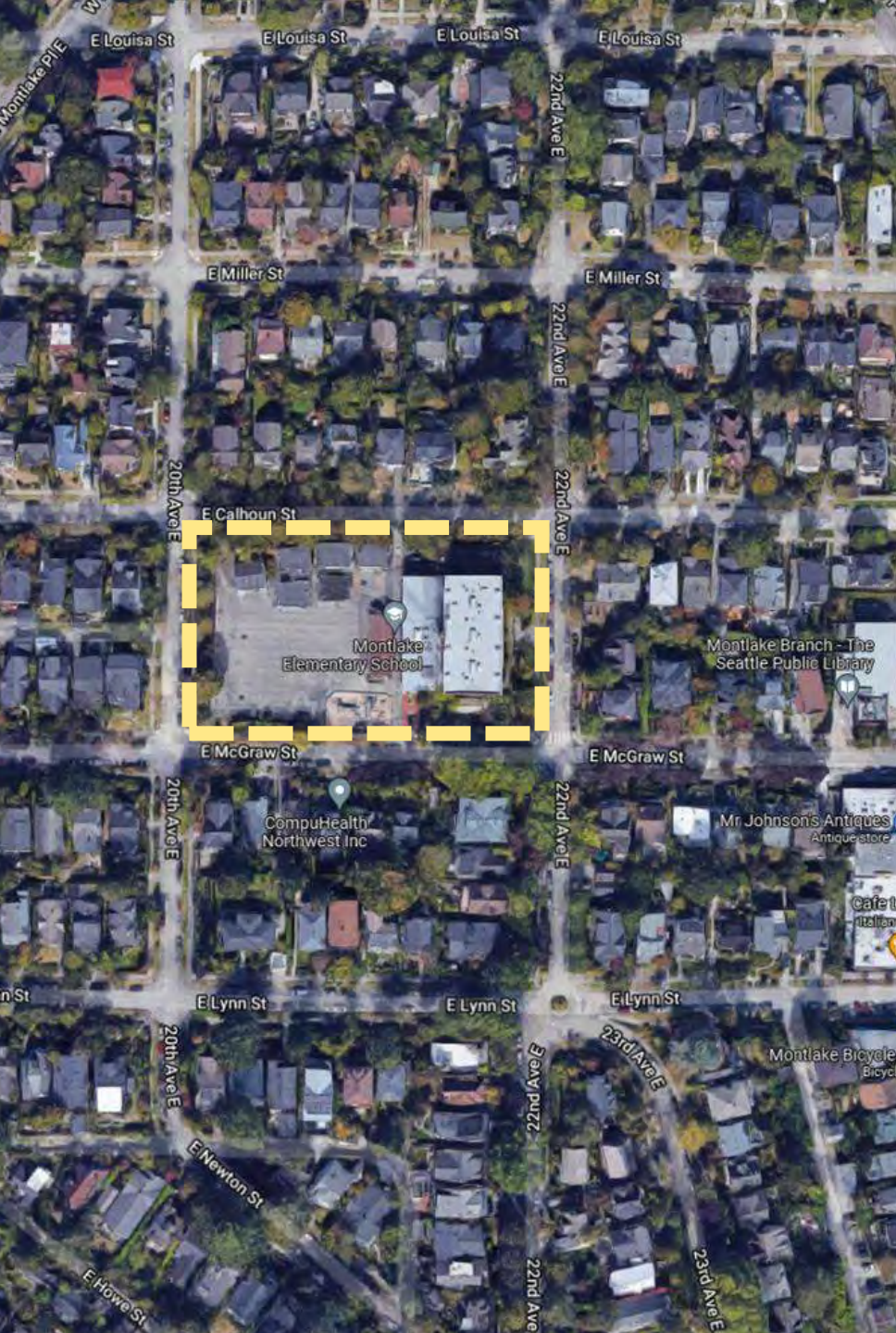
Project Basics

BEX V: Modernize Existing Building, Build Addition

500 Student School

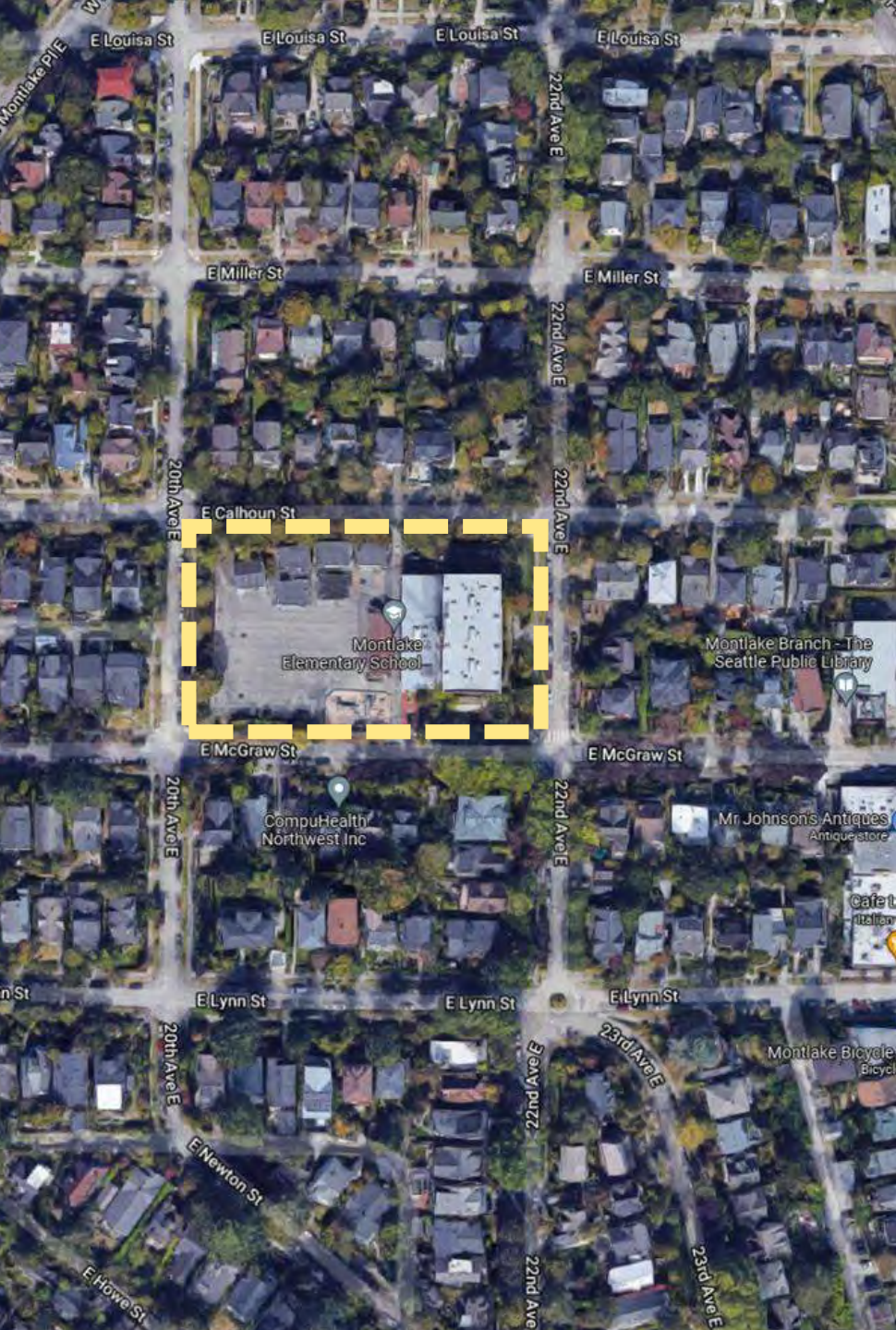
Modernize 22,447sf historically landmarked Building
New Building Addition

Total 80,500SF Building Area



Project Vision

- Provide Equitable Access to all students and families
- Create a welcoming entry for all
- Provide a 21st Century Learning Environment
- Provide healthy staff space for teacher retention
- Upgrade Safety and Security
- Structural and energy upgrades, and added safety to the historic building
- Community accessible amenities

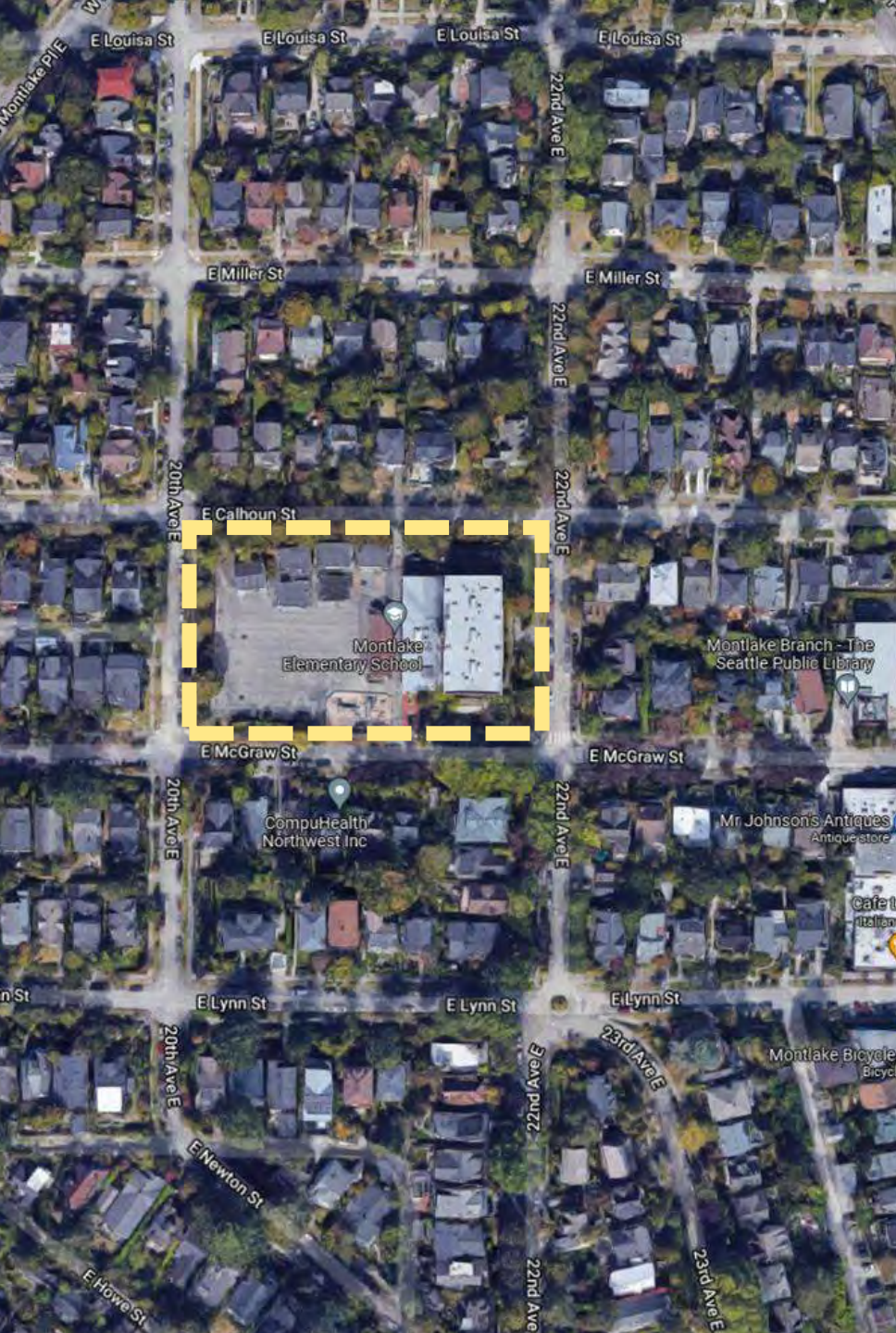


School Capacity

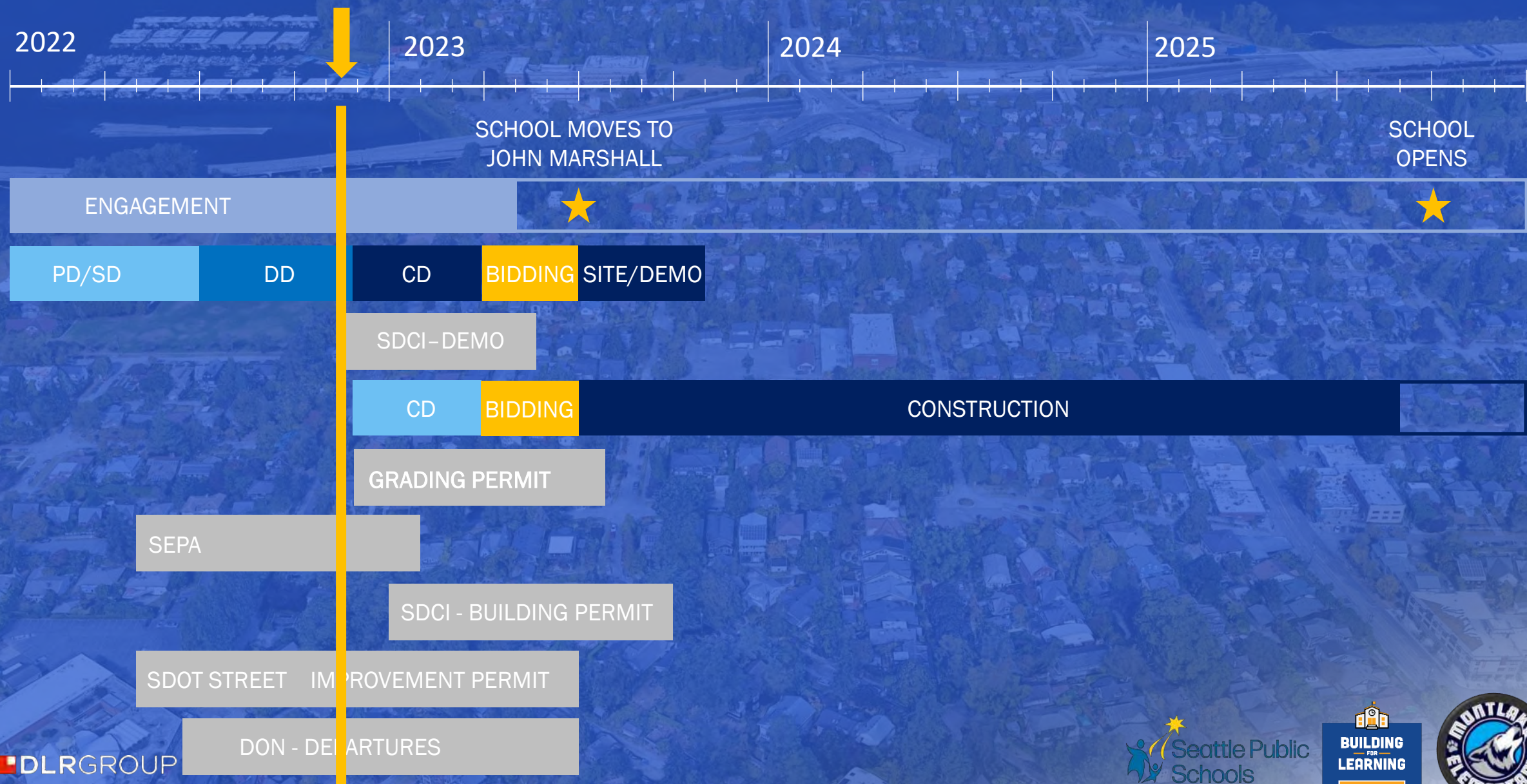
The determination to build elementary schools for a capacity of either 500 or 650 students is based on many aspects. A few examples of the factors that are considered are:

- Sustainable cohort sizes
- 21st century learning environment
- Projected city and region growth
- Analysis of past data trends and future projections for population and housing
- Review of city trends and future city plans (city comprehensive plan)
- Efficient use of levy funds
- Enrollment trends for new or modernized schools

We are building schools for the **next 75 years**. For Montlake Elementary school we believe a 500-seat school accommodates potential growth, provides flexibility for changing program needs and demographics, provides grade level teacher-to-teacher collaboration, and provides students with a safe and positive learning environment.



Project Schedule



Centering Equity + Strategic Plan Goals

Seattle Excellence:

SPS Strategic Plan Theory of Action

“WHEN WE FOCUS on ensuring **racial equity** in our educational system , **unapologetically** address the needs of **students of color who are furthest from educational justice**, and work to **undo the legacies of racism** in our educational system...”

Commitments to the Success of Every Student in Each of our Schools:

Equitable Access

Racial Equity Analysis

Workforce Equity

Professional Development

Welcoming School Environments

Partnerships

Multiple Pathways to Success

Recognizing Diversity

Engagement Strategy



BEX V Capital Levy Outreach (including Montlake ES)

45 school and group-specific meetings from 2018-2019

SPS Planning + Levy Website

15 District-Wide Meetings

10 Board Work Sessions on 2019 Levies

8 videos on projects posted to website + social media!

Districtwide meetings

1. April 2, 2018: Community meeting on BEX V Capital Levy planning held at Aki Kurose Middle School
2. April 3, 2018: Community meeting on BEX V Capital Levy planning held at Madison Middle School
3. April 23, 2018: Community meeting on BEX V Capital Levy planning held Seattle World School
4. April 24, 2018: Community meeting on BEX V Capital Levy planning held at Jane Addams Middle School
5. April 26, 2018: Community meeting on BEX V Capital Levy planning held at Salmon Bay K-8 School
6. June 1, 2018: Chinese language community meeting on BEX V Capital Levy planning
7. June 19, 2018: Somali language community meeting on BEX V Capital Levy planning
8. Sept. 12, 2018: Community meeting on BEX V Capital Levy planning held at Ingraham High School
9. Sept. 13, 2018: Community meeting on BEX V Capital Levy planning held at West Seattle High School
10. Sept. 20, 2018: Community meeting on BEX V Capital Levy planning held at Mercer Middle School
11. Sept. 24, 2018: Community meeting on BEX V Capital Levy planning held at Roosevelt High School
12. Sept. 25, 2018: Community meeting on BEX V Capital Levy planning held at Meany Middle School
13. Jan. 8, 2019: Levies 2019 community information meeting held at John Rogers Elementary School
14. Jan. 10, 2019: Levies 2019 community information meeting held at Montlake Elementary School and broadcast live on Facebook
15. Jan. 22, 2019: Levies 2019 community information meeting held at Rainier Beach High School

Feb. 8, 2019: Seattle voters approved Building Excellence V Capital Levy including Montlake Elementary project with more than 72% voting yes!!!

SDAT Team

Cheri Bloom, Former MES Garden Coordinator

Anny Hunt, Parent

Bianca DiJulio, Parent

Chester Weir, Parent

Ewa Sack, Parent

Jack Marshall, Teacher, 5th grade

Jennifer Lundgren, Art Teacher

Jessica Kaabo, Teacher

Julie Choung, Parent

Mary Beth Hribar, Parent PTA

Missy Pody, Staff, Parent

Matthey Sneddon, Parent

Cathy Patnoe, Special Education

Rebecca Gerben Mehta, Parent

Rob Dolin, Parent

Sarah Bruemmer, Parent

Tim Moore, Teacher

Beau Browman, Teacher



The poster is for the School Design Advisory Team (SDAT) at Montlake Elementary. It features logos for Montlake Elementary, Building Learning, and Seattle Public Schools at the top. The main text invites the community to join the SDAT to engage and share their voice. It lists the purpose of SDAT: to ensure the school reflects community values, supports educational needs, and seeks input from the community. It also provides meeting information: select Thursdays 3-5pm from 12/9 to 3/31, subject to a team agreement. A QR code links to the online SDAT response form. At the bottom, it provides the school website and the SDAT process website.

we invite you to join the
**SCHOOL DESIGN
ADVISORY TEAM (SDAT)**
engage and share your voice!

What is the purpose of SDAT?

- To ensure the school reflects community, school and diverse cultural values
- To ensure the new school supports current and future educational needs
- To seek input from, and share with the broader community

**help us envision a new
Montlake!**

MEETINGS
Select Thursdays 3-5pm
12/9, 1/13, 1/20, 2/3, 2/17, 3/10, 3/31
*subject to team agreement

 for complete online
SDAT response form

School Website:
<https://montlakees.seattleschools.org/>
SDAT Process website:
<https://www.seattleschools.org/departments/capital-projects-and-planning/school-construction/design-and-construction-process/sdat/>

Community Input

4 Student Engagements

Montlake Community Club Presentation

Hundreds of Community Meeting Save the Date Mailers

Teaching + Staff Survey

4 Community Update Meetings



3 PTSA Meetings

4 School Tours

SpED Family Listening Session

SDAT Homework and Input

8 SDAT Meetings!



Hundreds of Project Mailers

5 Staff engagement meetings

Creation of Project Vision and Goals



Community & Parent Digital Survey

Over 500 Community Survey flyers

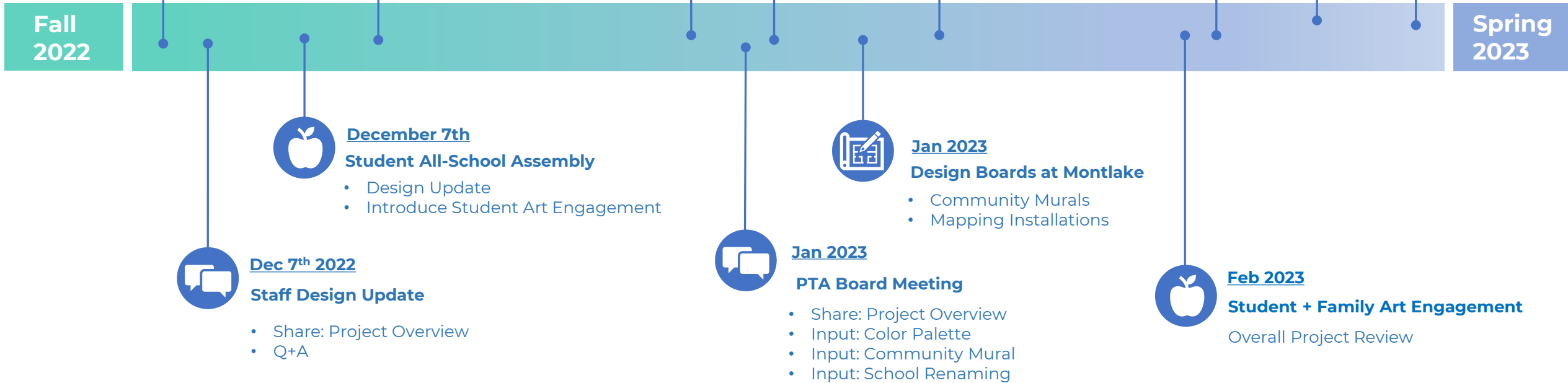
Hundreds of SDAT invitations

BIPOC Listening Session



Upcoming Engagement Opportunities *DRAFT*

Final Design Phase



Stakeholder Engagement Strategy During Construction

STUDENTS

- Student Art / Fence Screening
- Signing of the Final Beam
- Progress Presentations
- Class on Construction Careers
- Question & Answer Time



NEIGHBORHOOD

- Neighborhood BBQ – Get to know the Skanska Team
- “Sidewalk Superintendent” Posting of project progress and what’s next.
- Door to Door Flyers introducing the team and providing contact info



MONTLAKE ES STAFF & COMMUNITY

- Community Service Project(s)
- Back to School Drive(s)
- Construction Tour(s)
- Signing of the Final Beam



Upcoming Construction Process



➡ Start Date: July 2023

➡ Transparent Communication

➡ Construction Deliveries

➡ Work Hours: 7:00am-3:30pm

➡ Noise Mitigation

➡ Construction Trades Parking

➡ Limited Weekend Work

➡ Dust Mitigation

➡ Work Within ROW



DLRGROUP



SKANSKA

A Verdant Garden Of Change- Makers

A Place To Create, Cultivate, and Connect

We will grow the change-makers of tomorrow through hands-on learning that cultivates in students the skills and passion/confidence to make a positive difference in the world.



***Inclusive
Neighborhood
Network***



Spirit of Place



***Cultivating a
Resilient Future***



***Holistic
Health***

Historic Approach + Neighborhood Scale

Safety & Accessibility



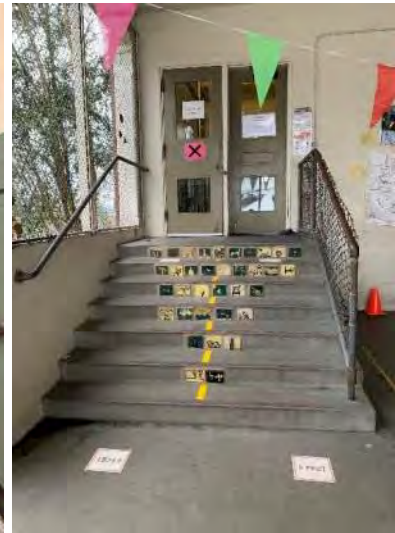
Montlake Elementary Circa 1960

Building is built on a plinth that elevates it from the surrounding sidewalk levels

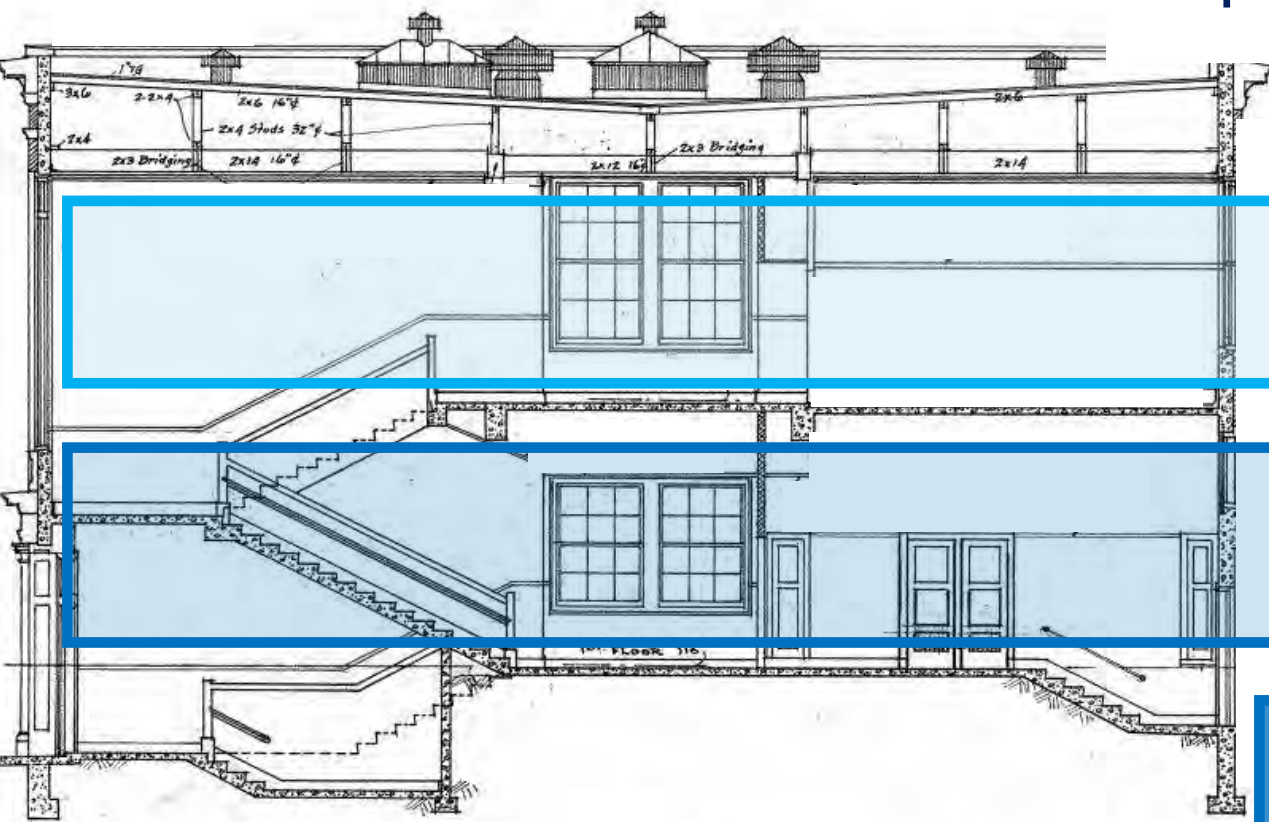
There is NO accessible route into the historic building from any location. All entrances have stairs

There is NO elevator to provide accessible route inside the building

There is NO clear main entry



Safety & Accessibility



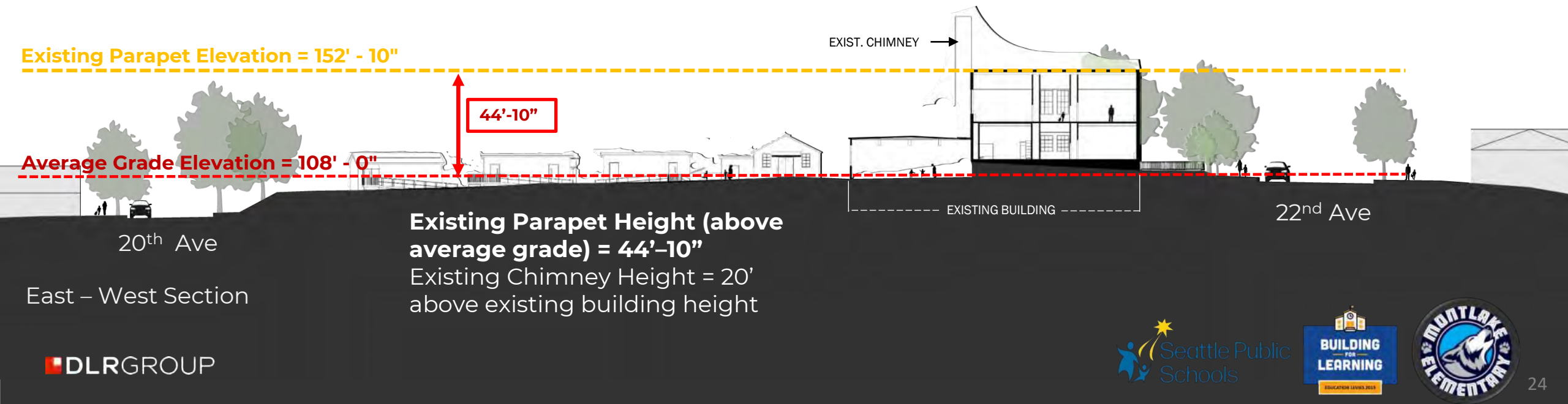
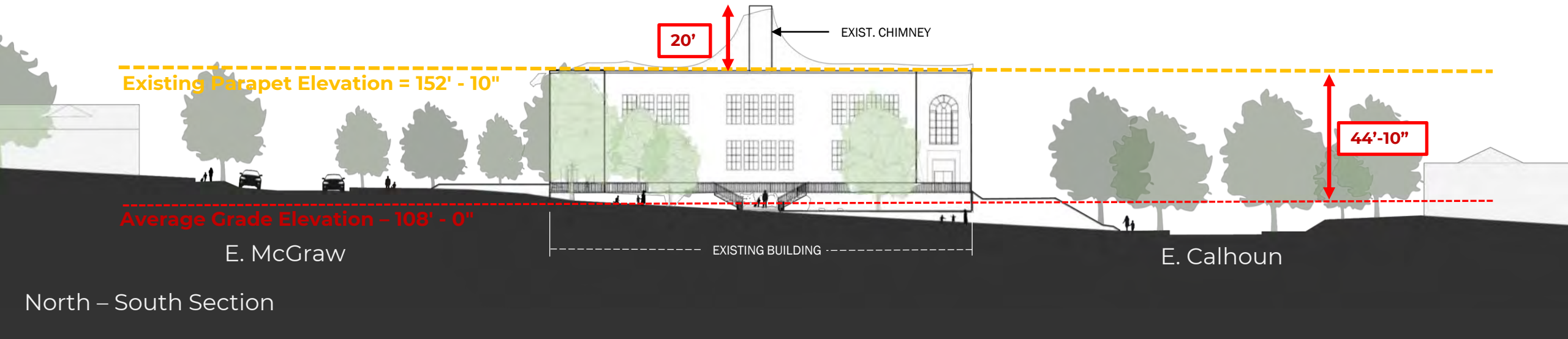
Level 3
Historic Second Floor

Level 2
Historic First Floor

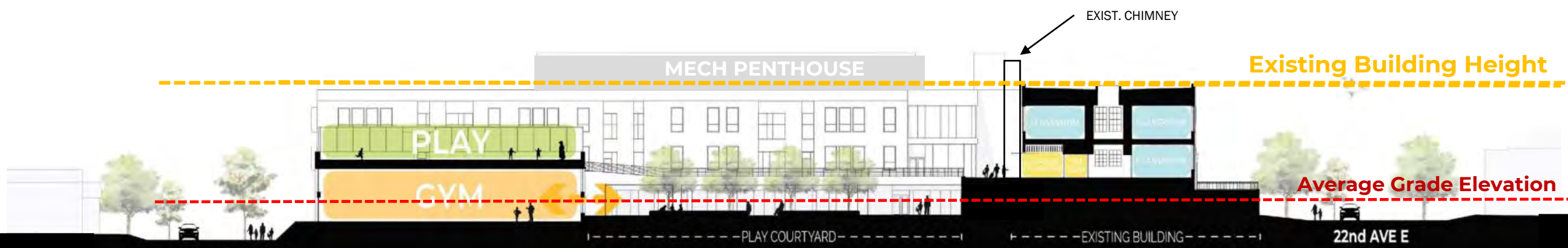
Level 1
Courtyard

Plinth Level

Existing Building Height + Scale

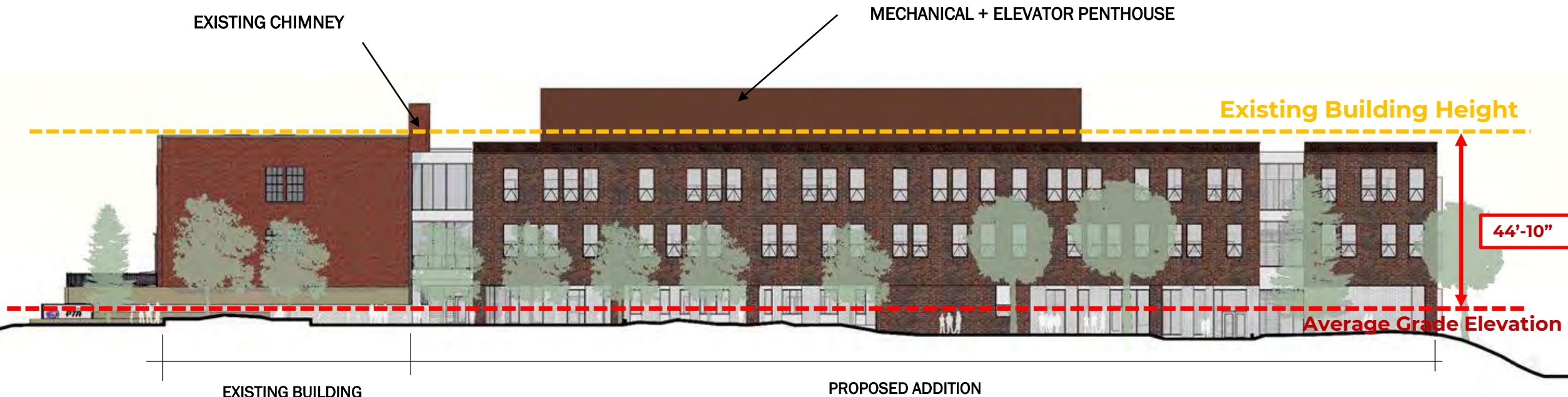


New Building Height + Scale



East – West Section

New Building Height + Scale



- Average Existing Grade
- Existing School Height Above Average Existing Grade

New Building Height + Pedestrian Scale



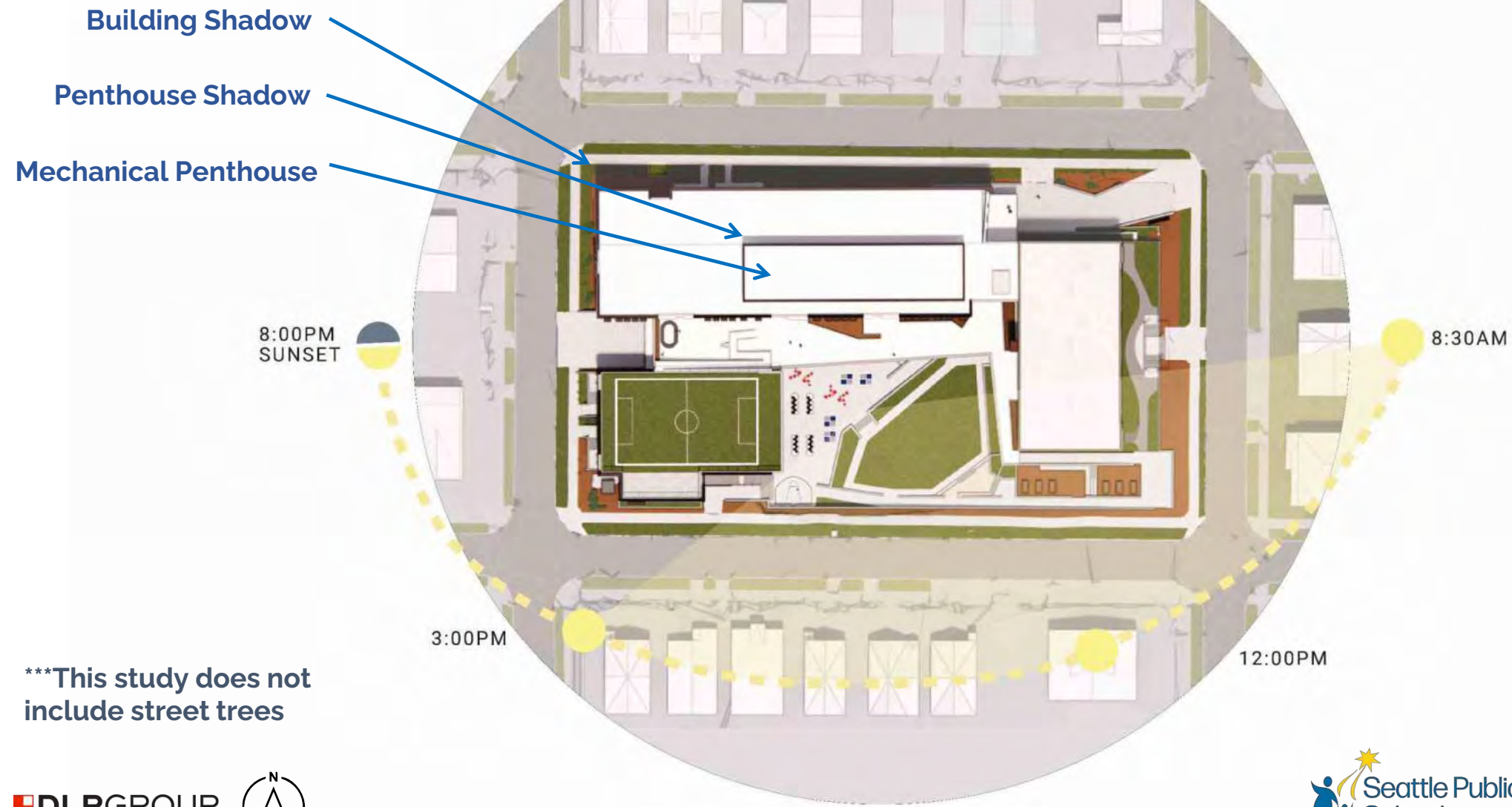
North – South Section

Overall Building Site Axon



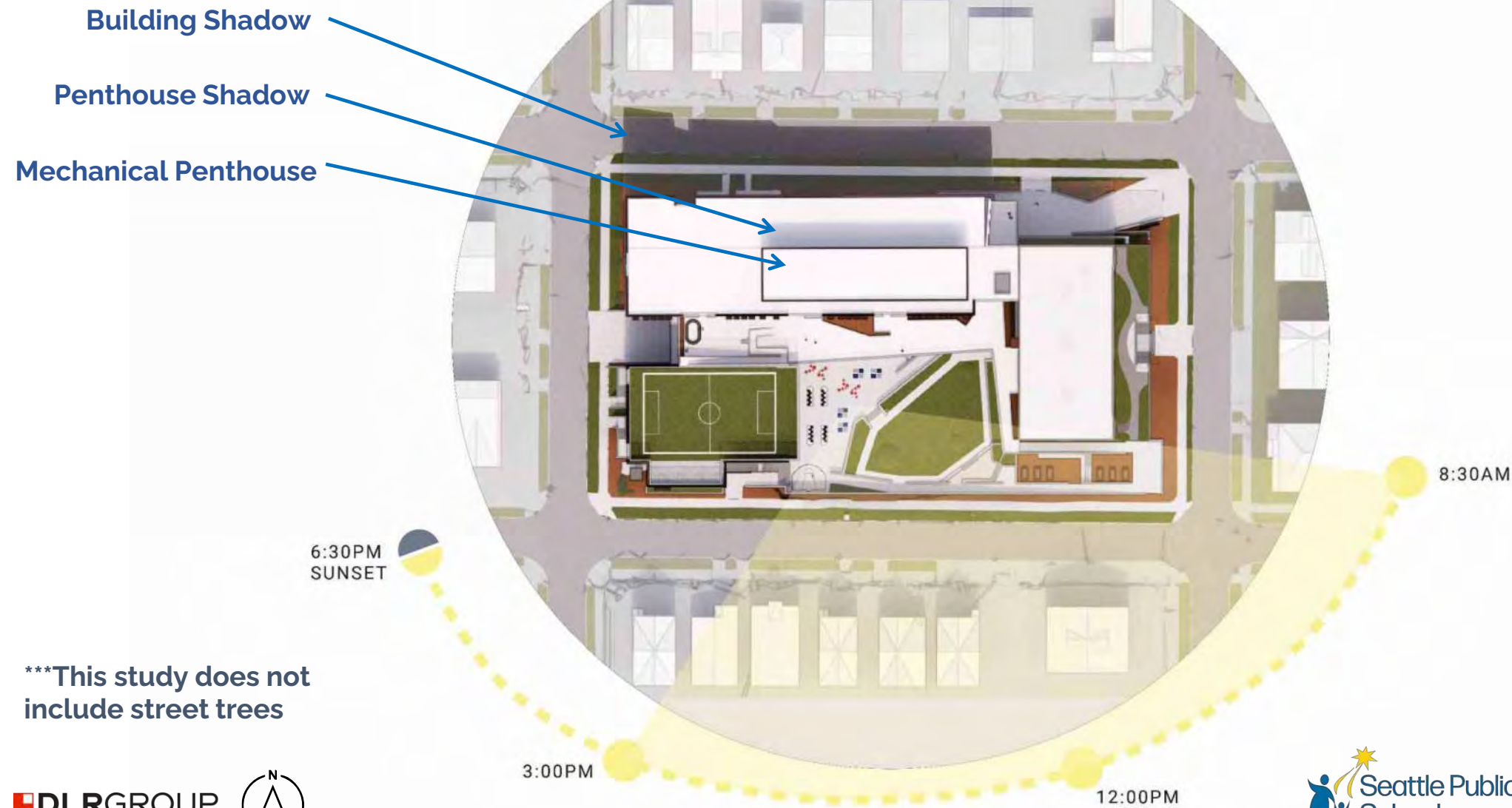
Shadow Studies

SUMMER SHADOWS AT NOON



Shadow Studies

AUTUMN SHADOWS AT NOON

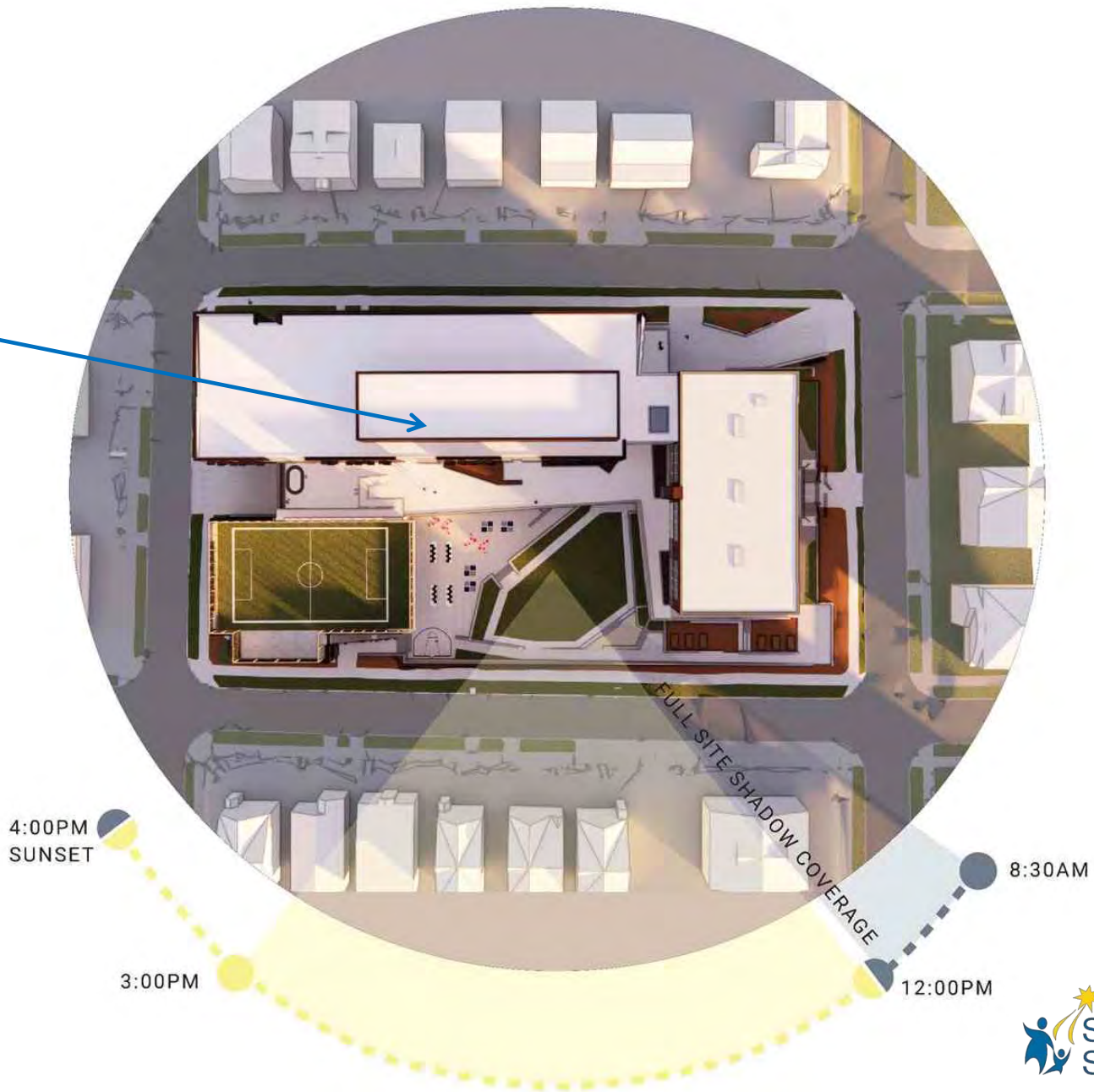


***This study does not include street trees

Shadow Studies

WINTER SHADOWS AT 8:00 AM

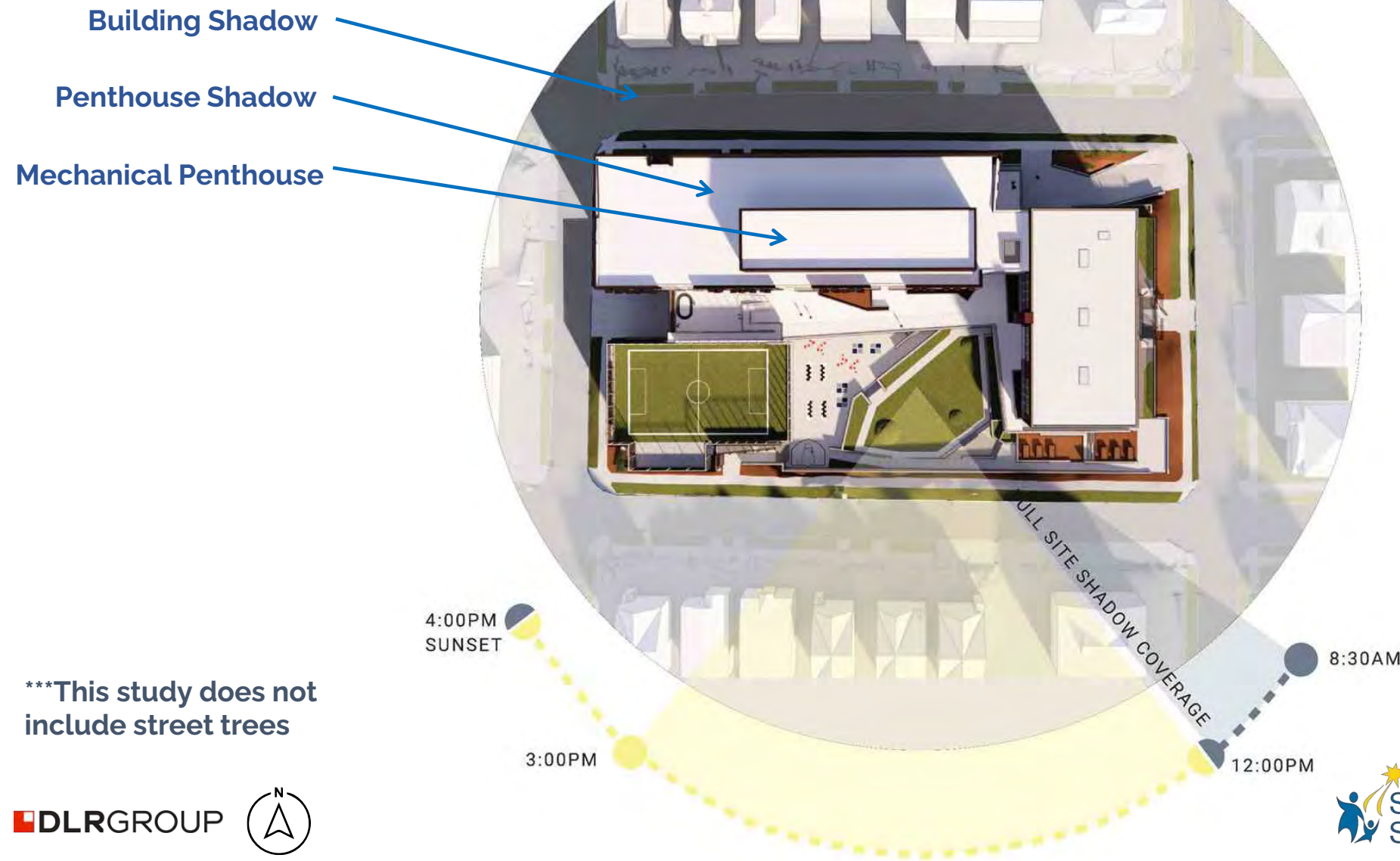
Mechanical Penthouse



***This study does not include street trees

Shadow Studies

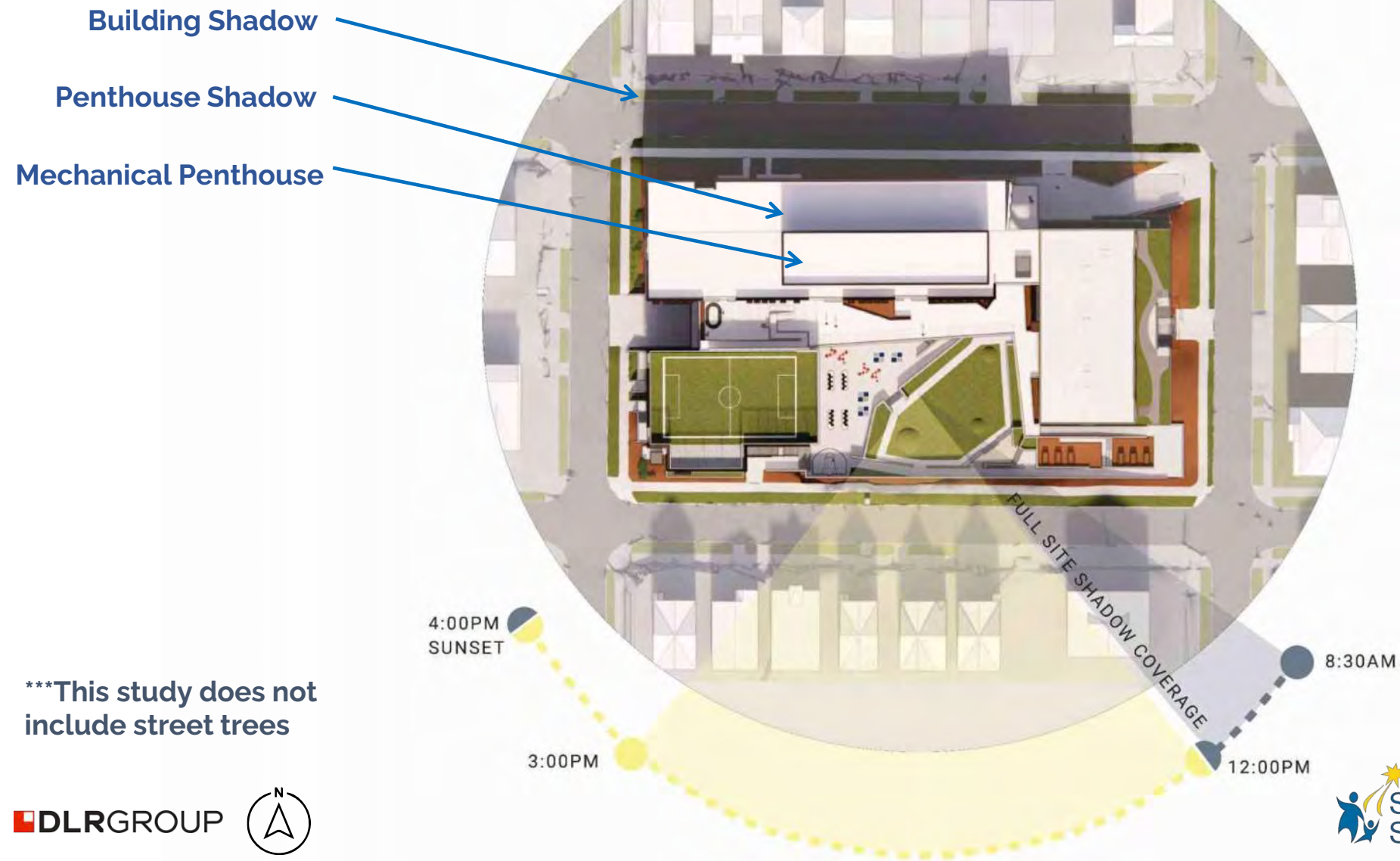
WINTER SHADOWS AT 10:00 AM



***This study does not include street trees

Shadow Studies

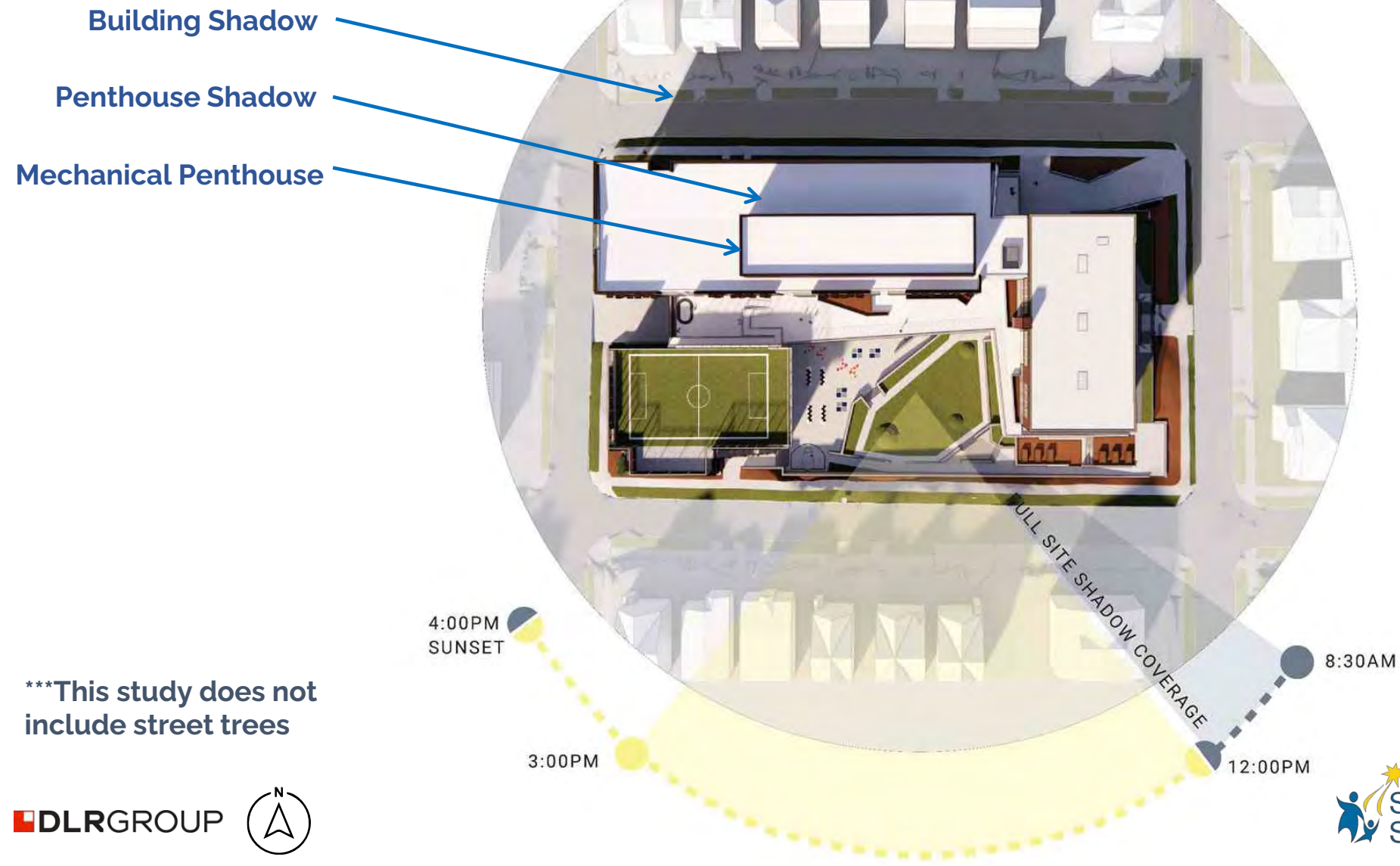
WINTER SHADOWS AT NOON



***This study does not include street trees

Shadow Studies

WINTER SHADOWS AT 2:00 PM

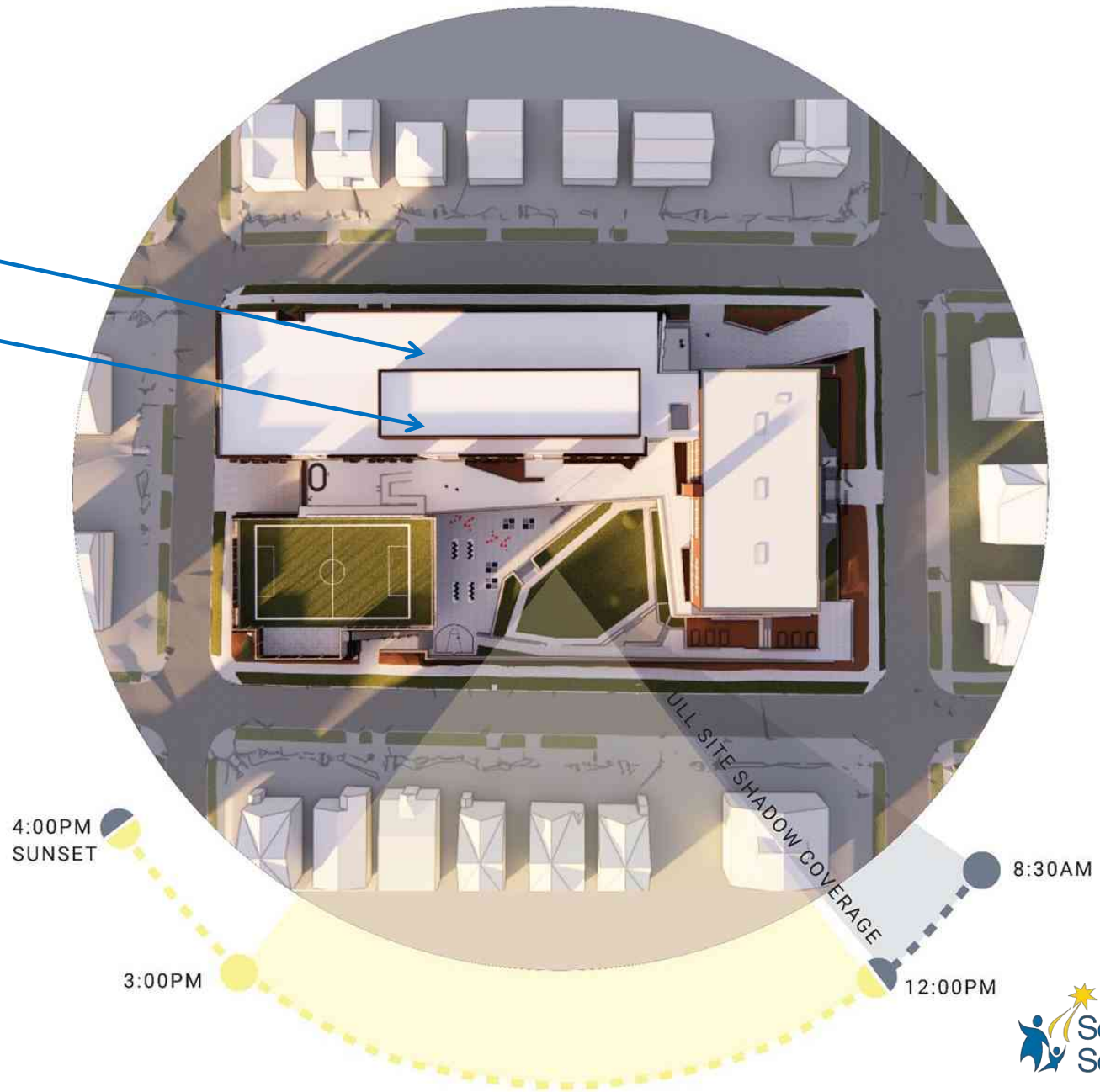


***This study does not include street trees

Shadow Studies

WINTER SHADOWS AT 4:00 PM

Penthouse Shadow
Mechanical Penthouse



***This study does not include street trees

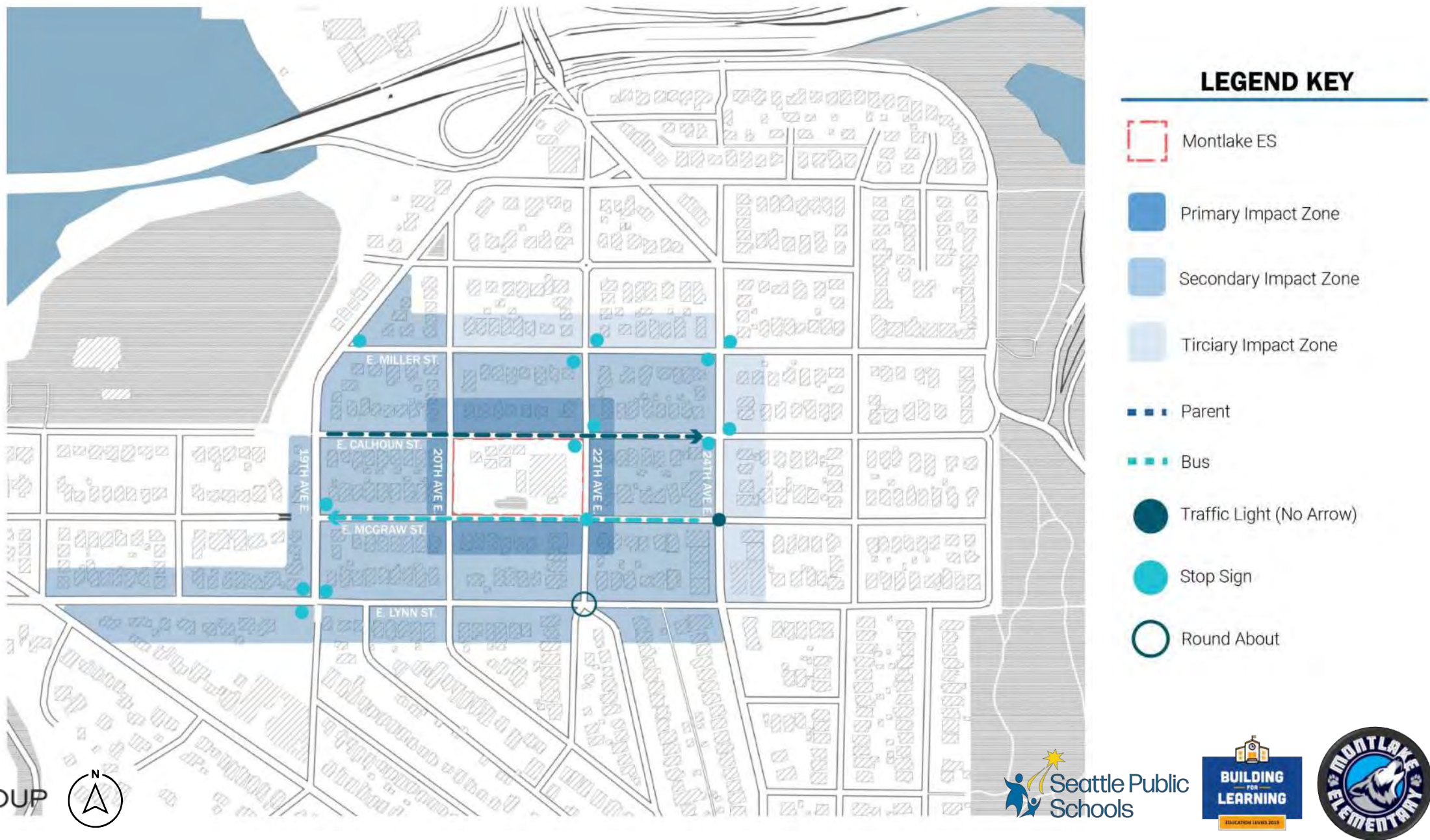
Site + Floor Plans

Traffic Analysis

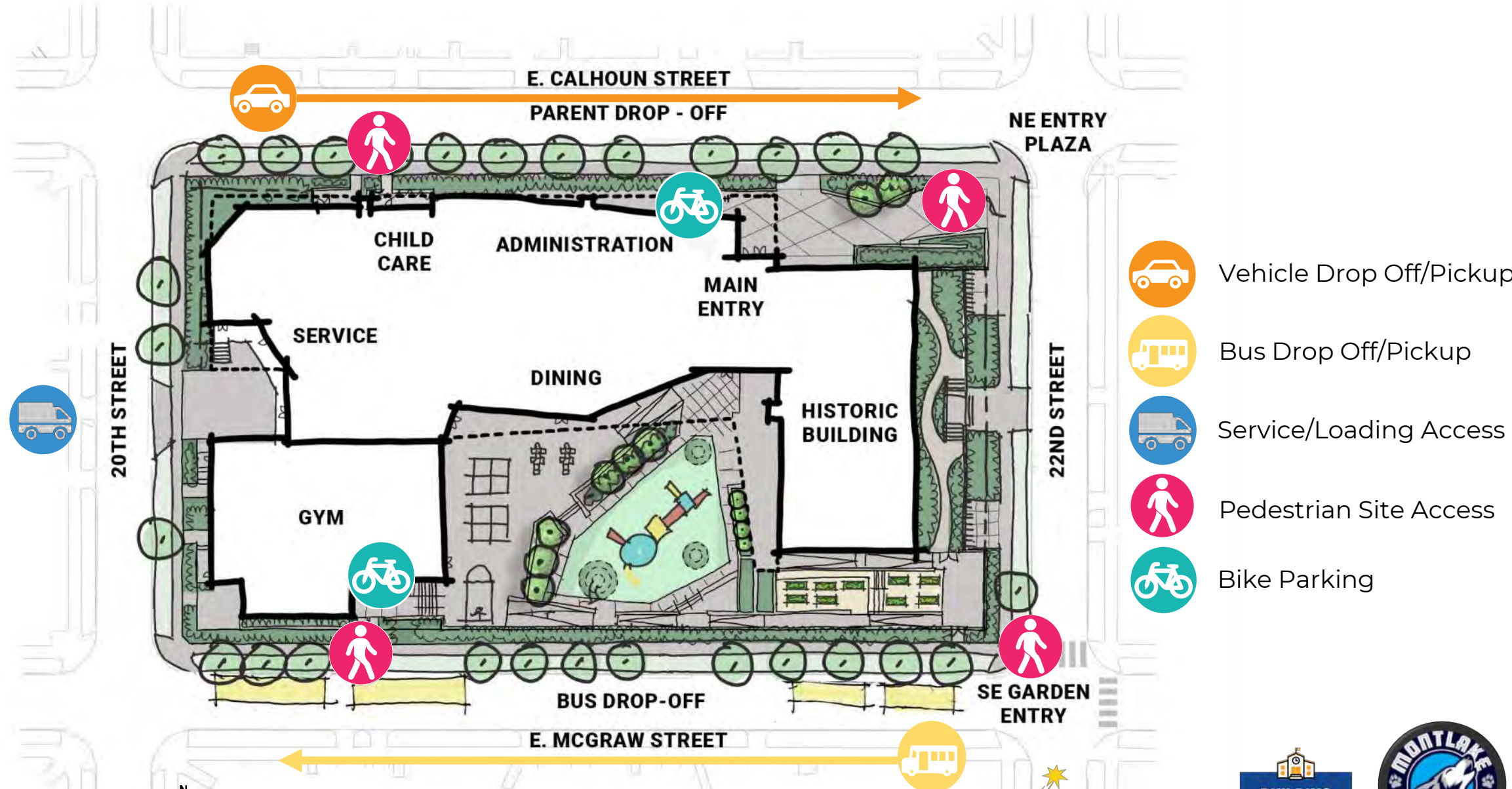







Source: Montlake Elementary School Modernization and Addition Transportation Technical Report, May 2022

Traffic Analysis

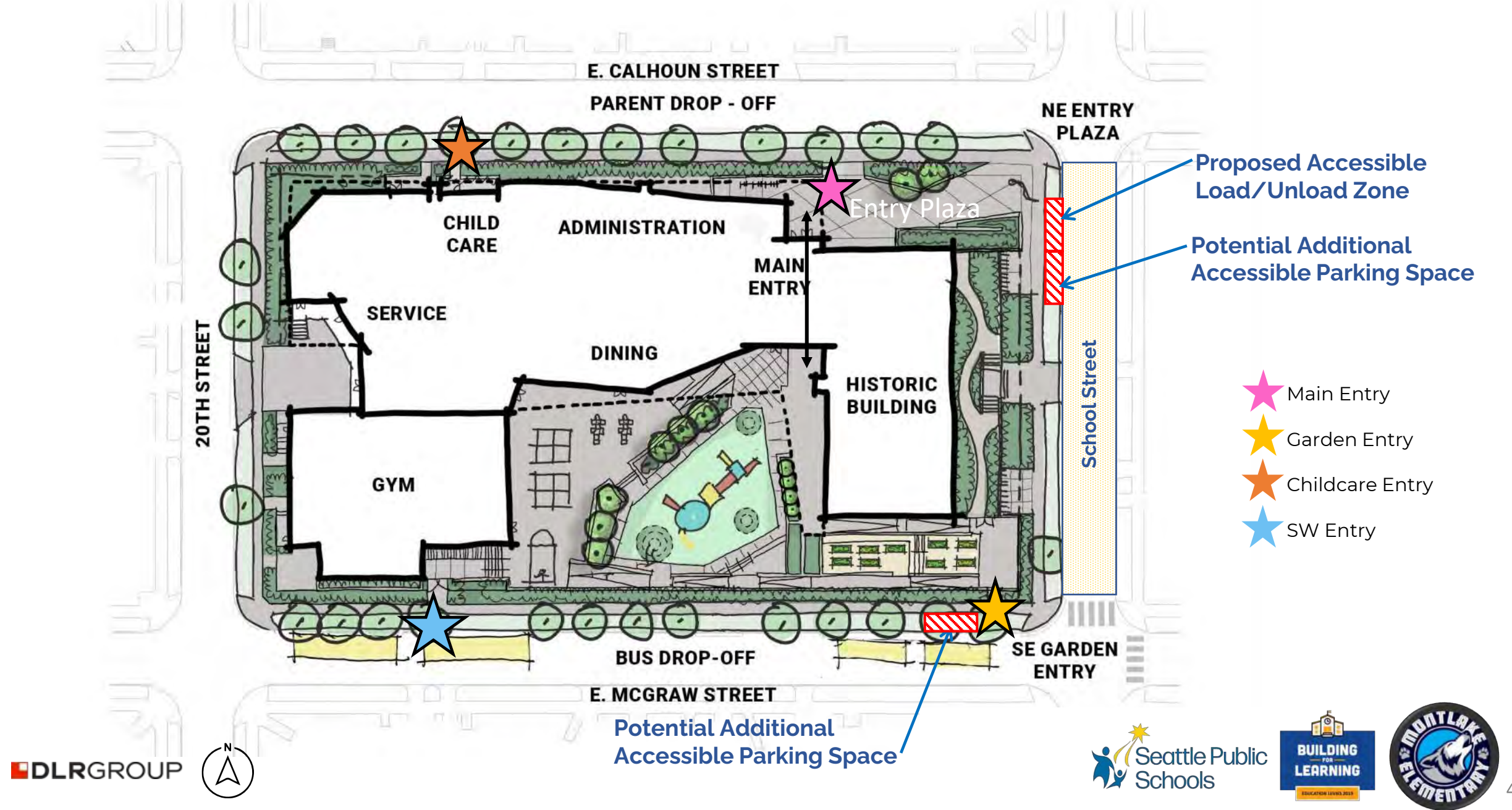


Site Plan: Site Access

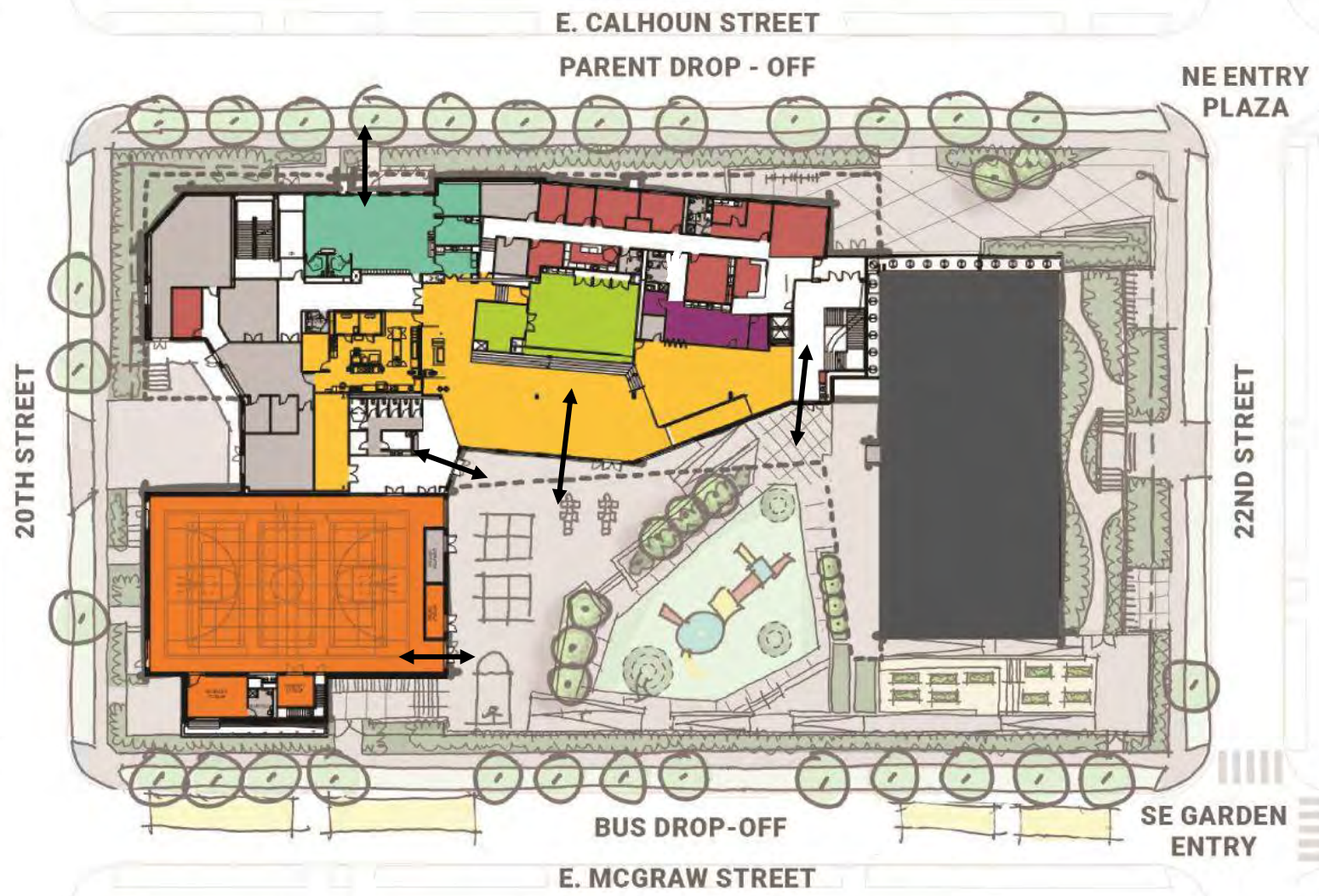


-  Vehicle Drop Off/Pickup
-  Bus Drop Off/Pickup
-  Service/Loading Access
-  Pedestrian Site Access
-  Bike Parking

Site Plan: Accessible Load / Unload Zone + Parking



Floor Plan: Level 1



- Core Learning
- Shared Learning
- Special Education
- Admin
- Music/Art
- Childcare
- Gym
- Media
- Dining/Kitchen
- Family Resource

Floor Plan: Level 2



- Core Learning
- Shared Learning
- Special Education
- Admin
- Music/Art
- Childcare
- Gym
- Media
- Dining/Kitchen
- Family Resource

Floor Plan: Level 3



Play and Building Amenities

Play

Building

Current Building

- **Outdoor Play = 20,270 SF**
- Outdoor Learning = 5,400
- Gym + Covered Play = 4,000

- Accessible Entrance = 0 SF
- Dining Commons + Kitchen = 720 SF
- Staff Collaboration Areas = 0 SF
- Family Room = 0 SF
- Child Care = 0 SF
- Music Room / Stage = 0 SF
- Library / Media = 700 SF

Proposed Design

- **Outdoor Play = 21,300 SF**
- Outdoor Learning = 12,700
- Gym + Covered Play = 9,705

- Accessible Entrance = 4,150 SF
- Dining Commons + Kitchen = 5,000 SF
- Staff Collaboration Areas = 1,290 SF
- Family Room = 1,600 SF
- Child Care = 1,700 SF
- Music Room / Stage = 1,300 SF
- Library / Media = 2,700 SF

Play Area Comparison to Other SPS Schools

SPS School

Play Area

• Montlake Elementary School	= 21,300 SF
• TOPS K-8	= 1,680 SF
• Beacon Hill ES	= 4,202 SF
• Lowell ES	= 6,705 SF
• Licton Springs K-8 at Webster	= 7,038 SF
• Hazel Wolf K-8	= 7,235 SF
• Magnolia ES	= 7,286 SF
• Cedar Park ES	= 7,515 SF
• McGilvra ES	= 10,300 SF
• Madrona ES	= 10,570 SF
• ML King ES	= 11,600 SF

Building Character + Design

Design Concept: Carve



Exterior Materials Design Approach



Accessible and Welcoming Entry



View from Across Calhoun | North Elevation

Mech.
Penthouse
Not Visible
from North
Side of
Calhoun



View from Across Calhoun and 20th



Community-Driven Art Opportunity

View from Across McGraw and 20th

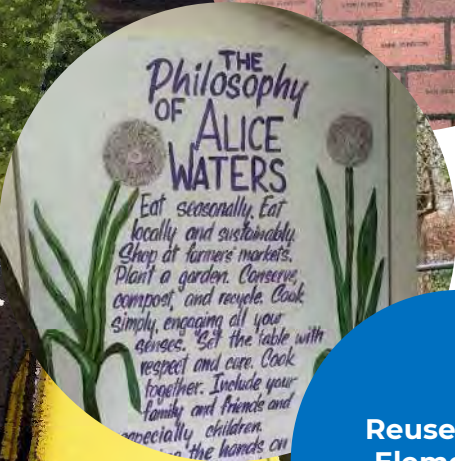


View from Garden Terraces and Ramp

Community Mural
Opportunity



Integration of the Garden + Play Areas



View from McGraw + 22nd



View of Current Entry: Honoring Indigenous Cultures



Interactive
Signage

Student Art
Engagement?



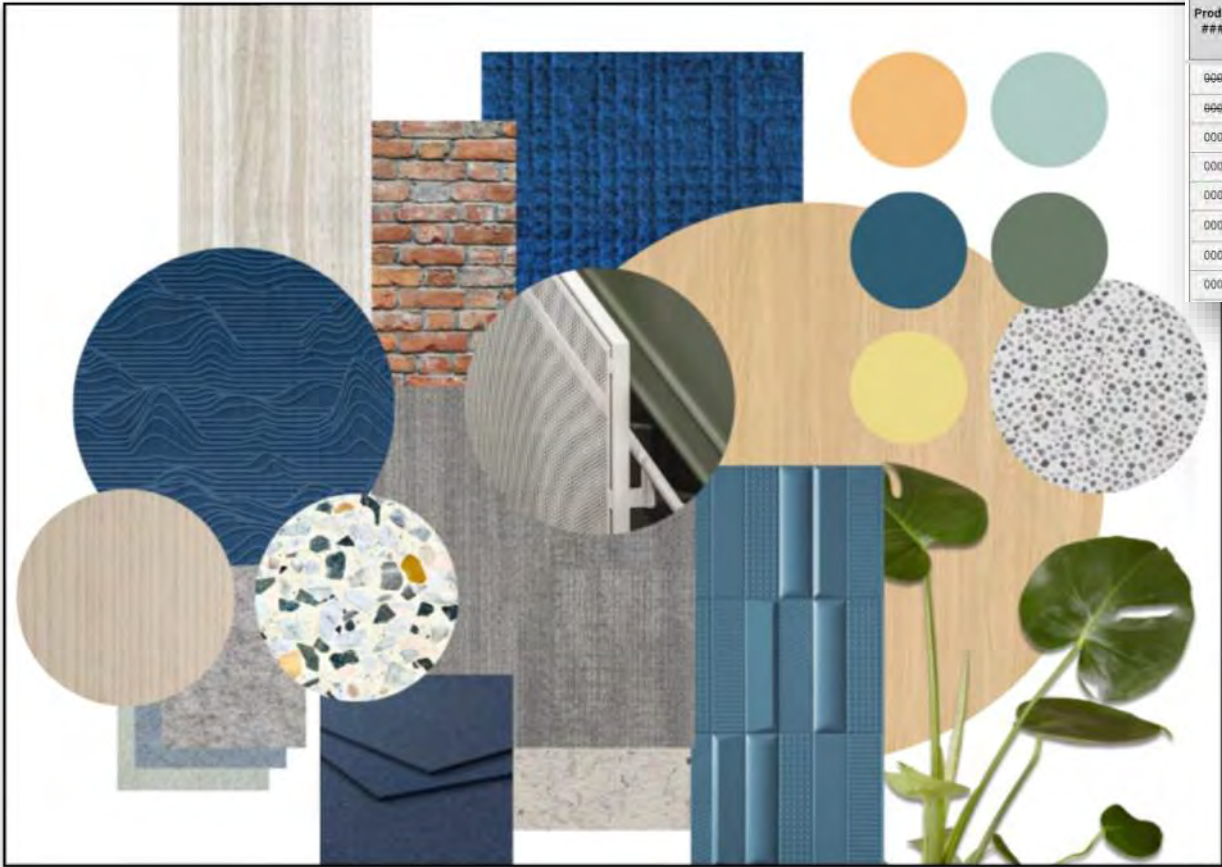
Site Sign Possibilities





Healthy Learning + Teaching Environments

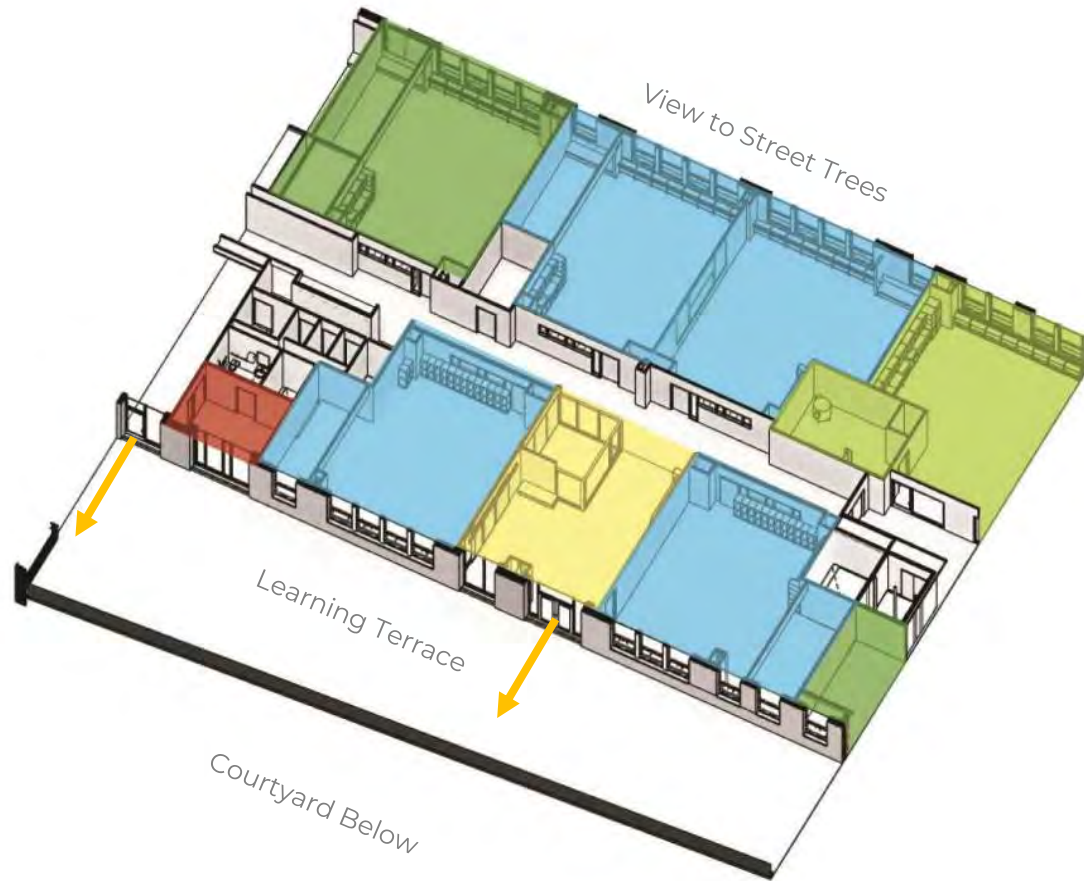
Embodied Carbon and Healthy Materials



Total material cost			\$0.00				
			GC COORDINATION ZONES				
General Product Information			STATUS				
Product ###	Priority	CSI Div	Product Type Description	Trade Partner	Status	Submittal #	Material Cost (\$)
0001	~	06 17 00	MASS-TIMBER-CLT	STRUCTURLAM	POR:NOT SELECTED	~	
0002	~	06 18 00	MASS-TIMBER-HEAVY-TIMBER FRAMING	STRUCTURLAM	POR:NOT SELECTED	~	
0003	High	27 10 00	BLUEPRINT, TARDIS IDF	GOOGLE BLUEPRINT	POR:BOD	~	
0004	Low	03 35 00	CONCRETE FINISHING		POR:BOD	~	
0005	Low	03 30 00	CAST-IN-PLACE CONCRETE		POR:BOD	~	
0006	High	23 61 00	VRF SYSTEM		POR:BOD	~	
0007	~	09 30 00	MK: TILING		POR:BOD	~	
0008	~	06 10 00	MISC. ROUGH CARPENTRY		POR:BOD	~	



Learning Pods + Differentiated Teaching + Learning

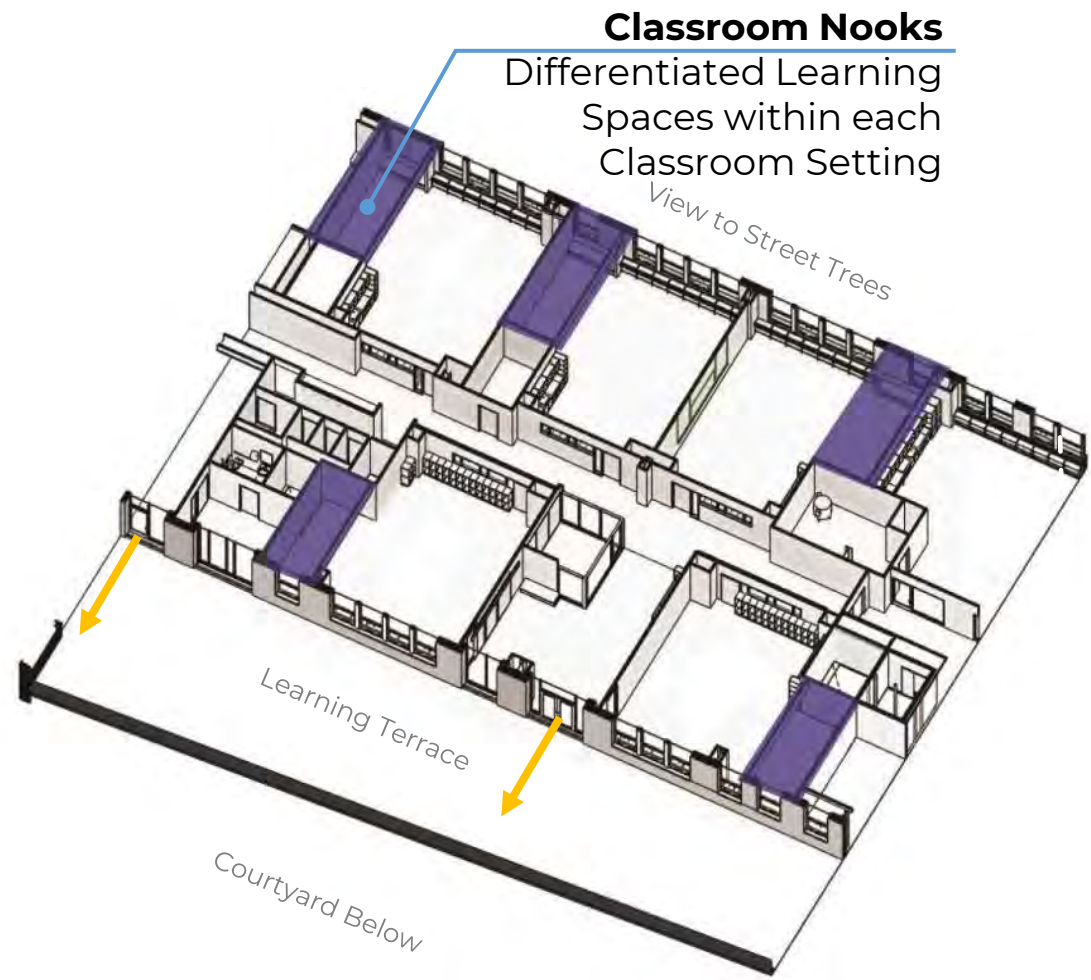


Strategic Plan Priority 1

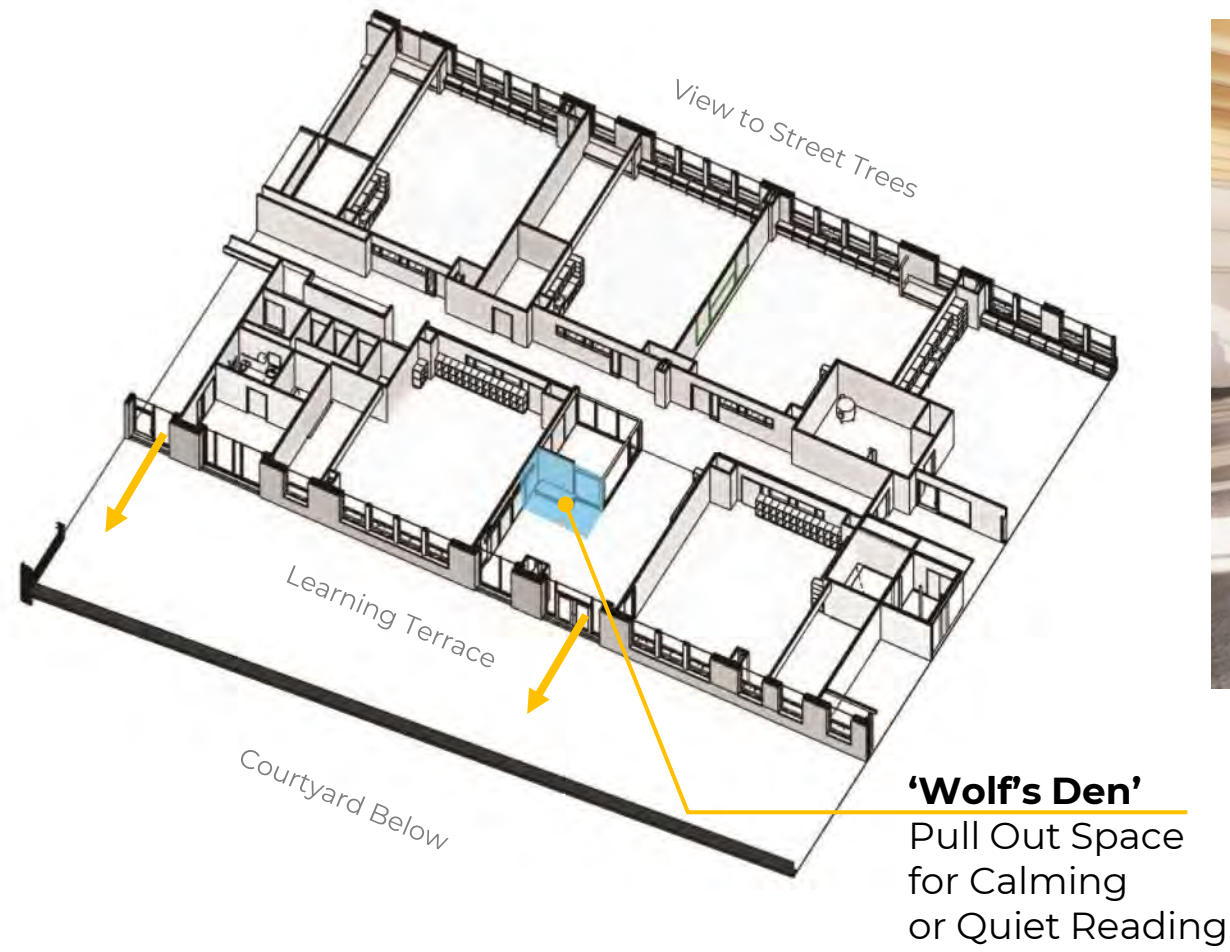
High Quality Instruction and Learning Experiences

-  Core Learning
-  Shared Learning
-  Special Education
-  Staff Support Space

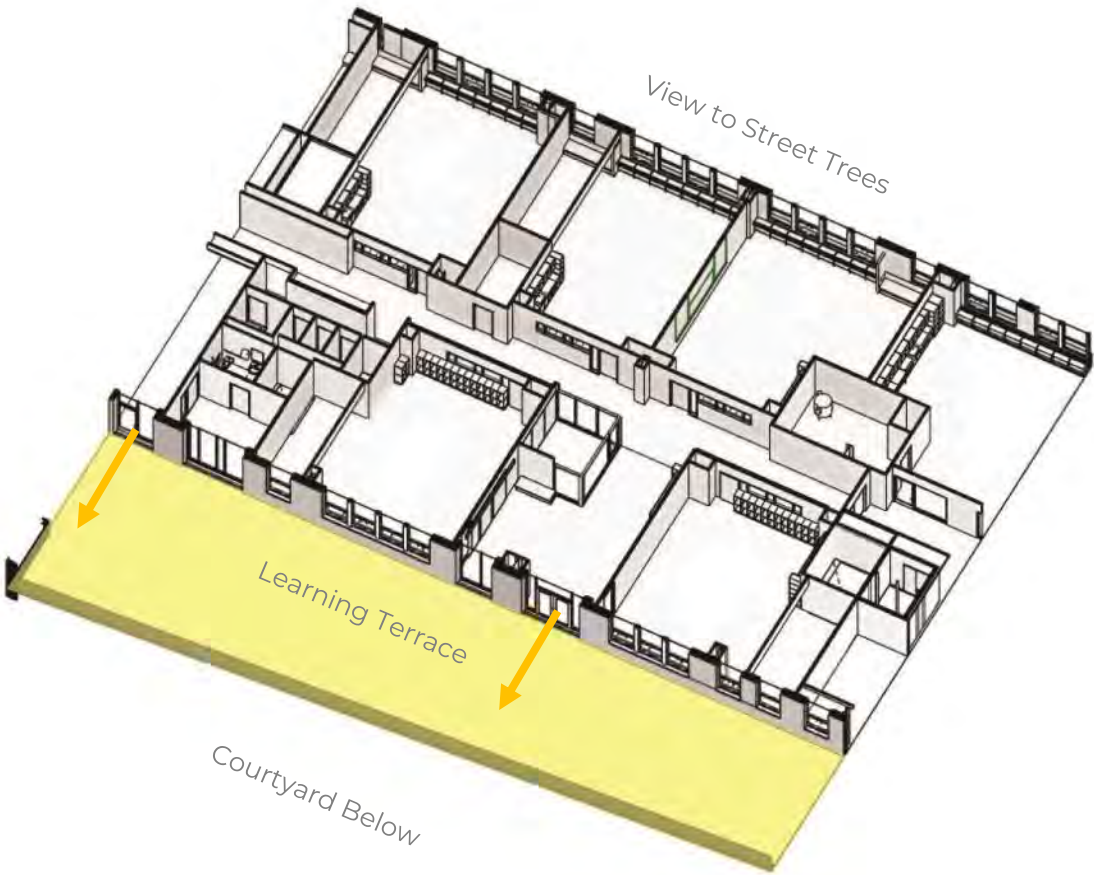
Nooks + Trauma-Informed Design



Collaborative Areas



Direct Outdoor Connections



Direct Connection from Dining to Play Courtyard



Garden Terrace + Play Area

Community Mural Opportunity



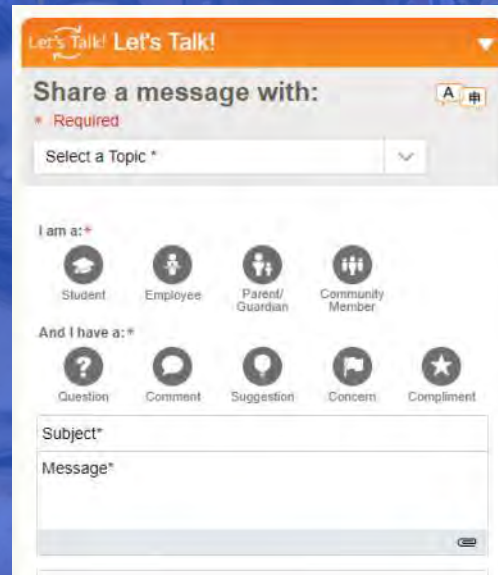
Next Steps

- Continuing Community Involvement, Conversations, feedback
- Refined Energy Modeling to meet performance goals
- SPS Stakeholder Reviews
- Community direct input on Materials + Murals
- Balancing Cost
- Landmarks Approval, SEPA, departures, building permits

Thank you!

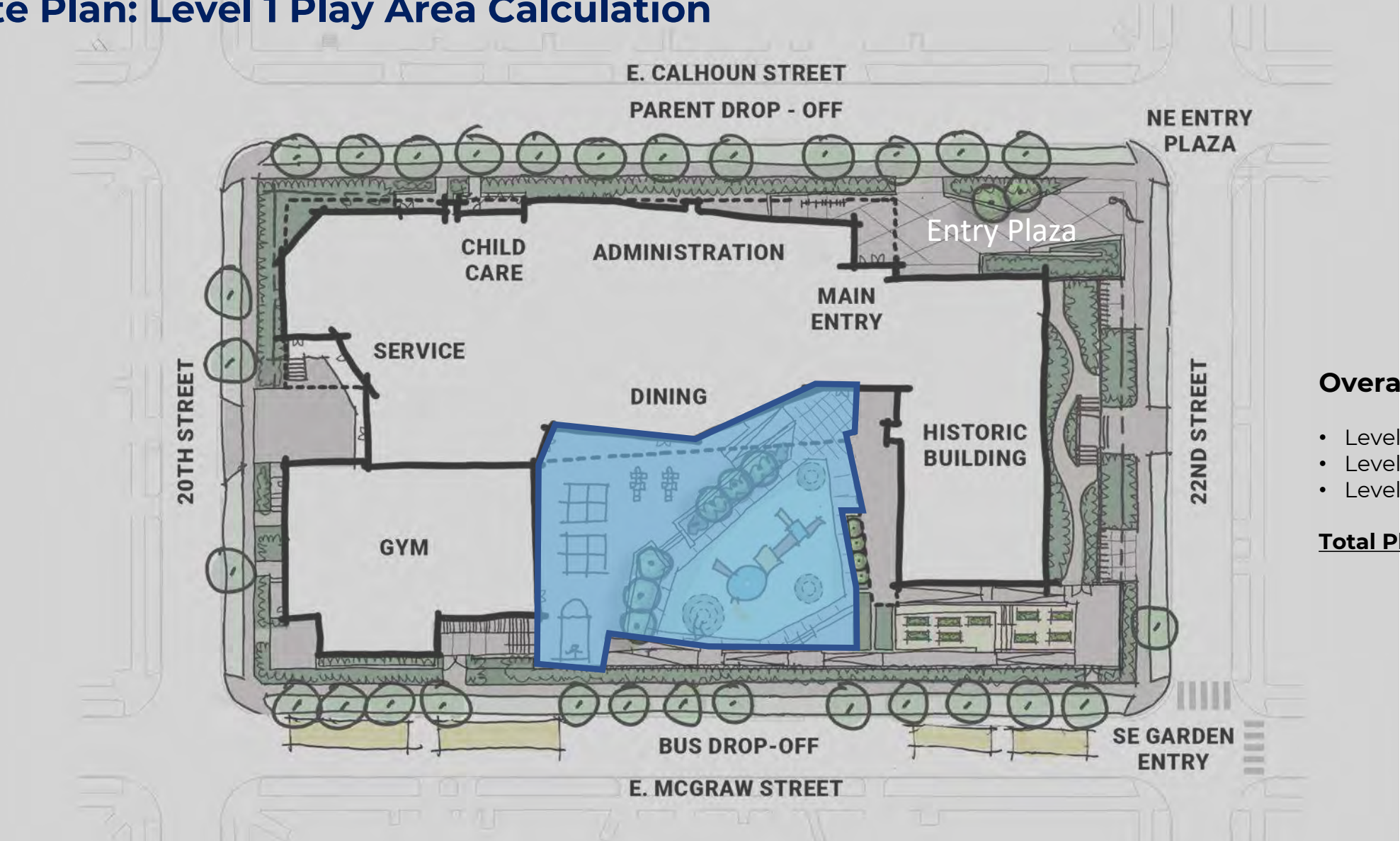
Questions?

<https://www.seattleschools.org/departments/capital-projects-and-planning/school-construction/projects/montlake/>



The screenshot shows a feedback form titled "Let's Talk! Let's Talk!". It includes a "Share a message with:" section with a "Required" label and a "Select a Topic *" dropdown menu. Below this is a "I am a: *" section with four radio button options: "Student", "Employee", "Parent/Guardian", and "Community Member". The "And I have a: *" section has five radio button options: "Question", "Comment", "Suggestion", "Concern", and "Compliment". At the bottom, there are text input fields for "Subject*" and "Message*", and a "Send" button.

Site Plan: Level 1 Play Area Calculation



Level 1

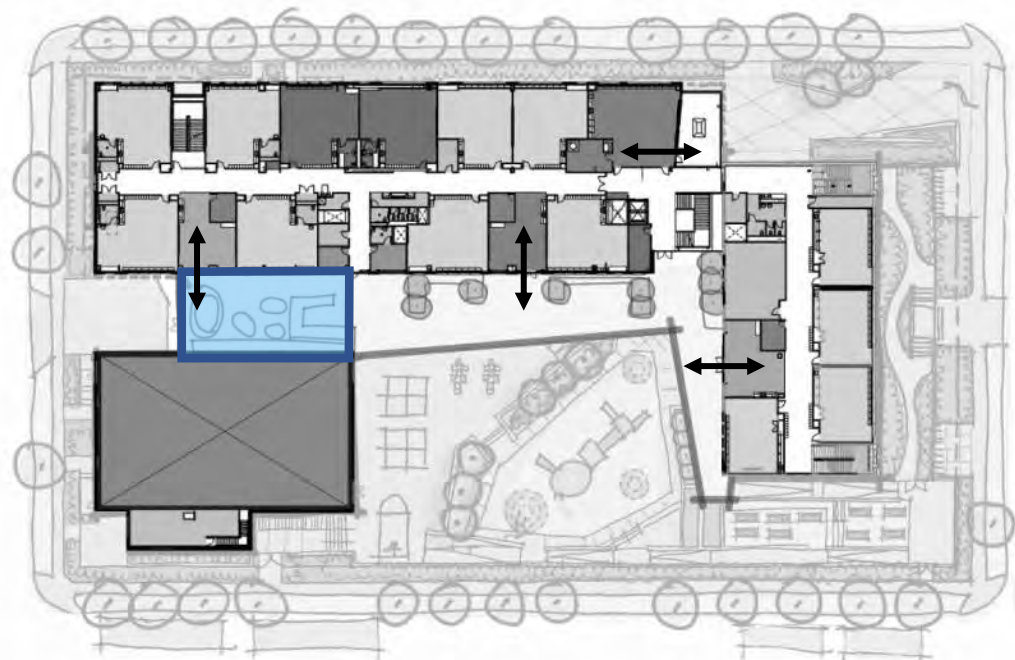
Overall Active Play Areas:

- Level 1 Courtyard = 12,770 SF
- Level 2 Kinder Play = 2,200 SF
- Level 3 Rooftop Play = 7,340 SF

Total Play Area = 22,310 SF

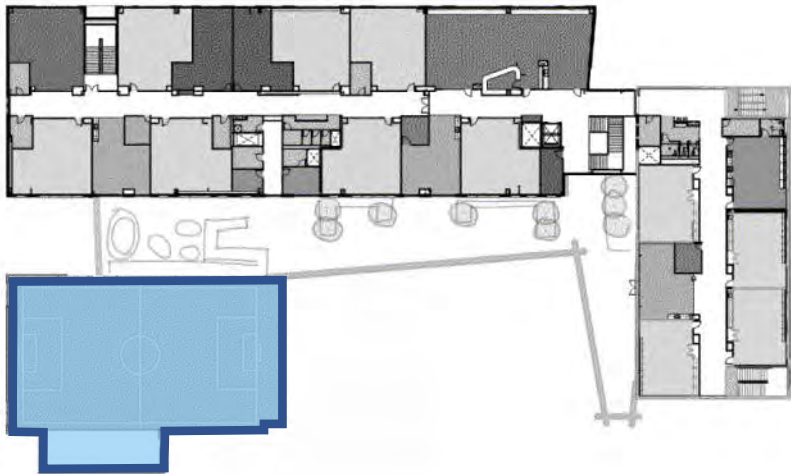
 Courtyard Play Area = 12,770 SF

Floor Plan: Level 2 and Level 3 Play Area Calculations



Level 2

 Kinder Play = 2,200 SF



Level 3

 Rooftop Play = 7,340 SF