

Planning the 2022 School Levies

Community Meetings

September 21 and 23, 2021



Seattle Public Schools

Ground Rules and Other Information

- Your participation is valued.
- This meeting is being recorded.
- Civility, respect for others, and reasoned discussion are expected from all.
- All attendees are muted until the Question-and-Answer periods; cameras are off.
 - Focus on answering questions and taking comments on what is presented.
 - You can put questions in the chat along the way.
 - Let's Talk form for input at www.seattleschools.org/levies
- We will end at 7:30 p.m.
 - May end earlier if there are no more questions.



Agenda

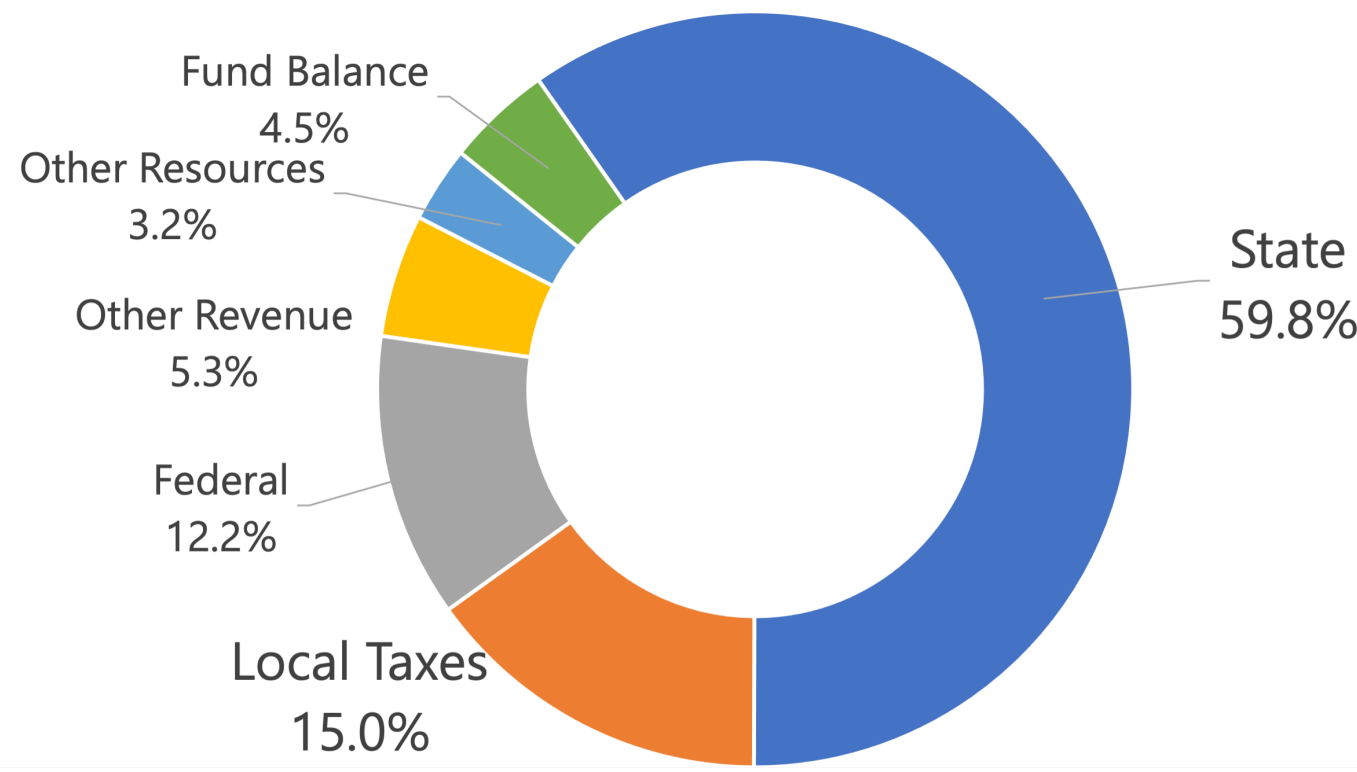
- Presentation: Planning for School Levies
 - School Funding
 - Educational Programs and Operations Levy (EP&O)
 - BTA V Capital Levy
- Questions and Answers

K-12 Funding in Seattle

- School districts are funded through state, local, and federal dollars.
- In addition, every three years, the district asks voters to consider renewing the operations levy, which is a local education property tax.
- Local levies are also the main source of funding for technology and school building construction and improvements.
- All funding generated by these voter-approved levies stays in Seattle to support our students and schools.



2021-22 SPS Funding by Source



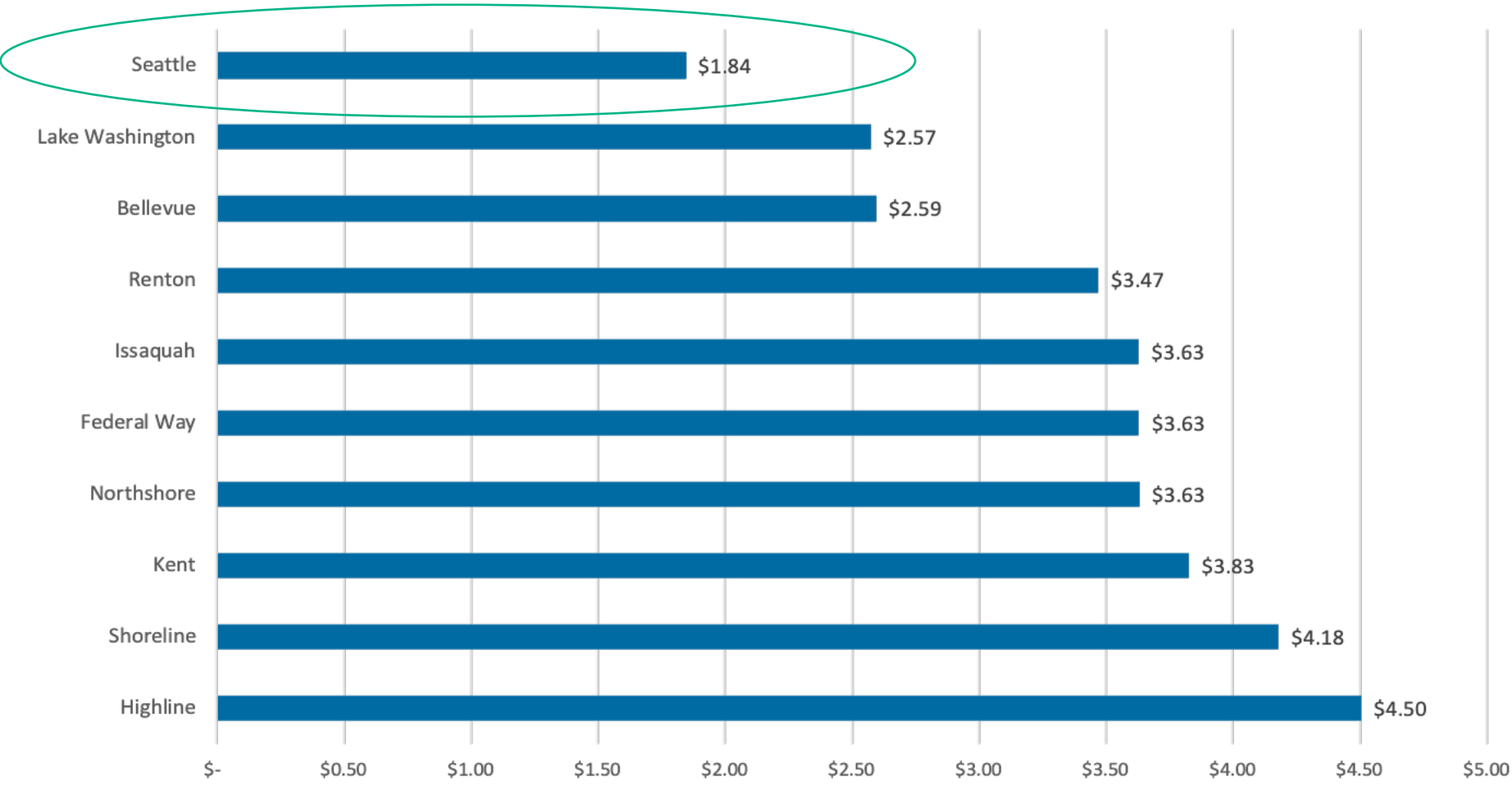
This does not include capital levy funding that is used for construction and technology

About SPS School Levies

- Property taxes to fund public schools that must be approved by voters
- Two SPS levies up for renewal in February 2022
 - One supports critical day-to-day operations not fully funded by state
 - One supports technology and school building improvements
- Renewing the levies continues critical funding for SPS students, schools, and staff

How Seattle School Taxes Compare

Per \$1,000 Assessed Value 2021 Levy Rate of Large King County School Districts



Educational Programs and Operations Levy (EP&O) Renewal



EP&O Renewal

Renewal of 3-year levy will ensure **every student** has access to the tools and resources they need to succeed



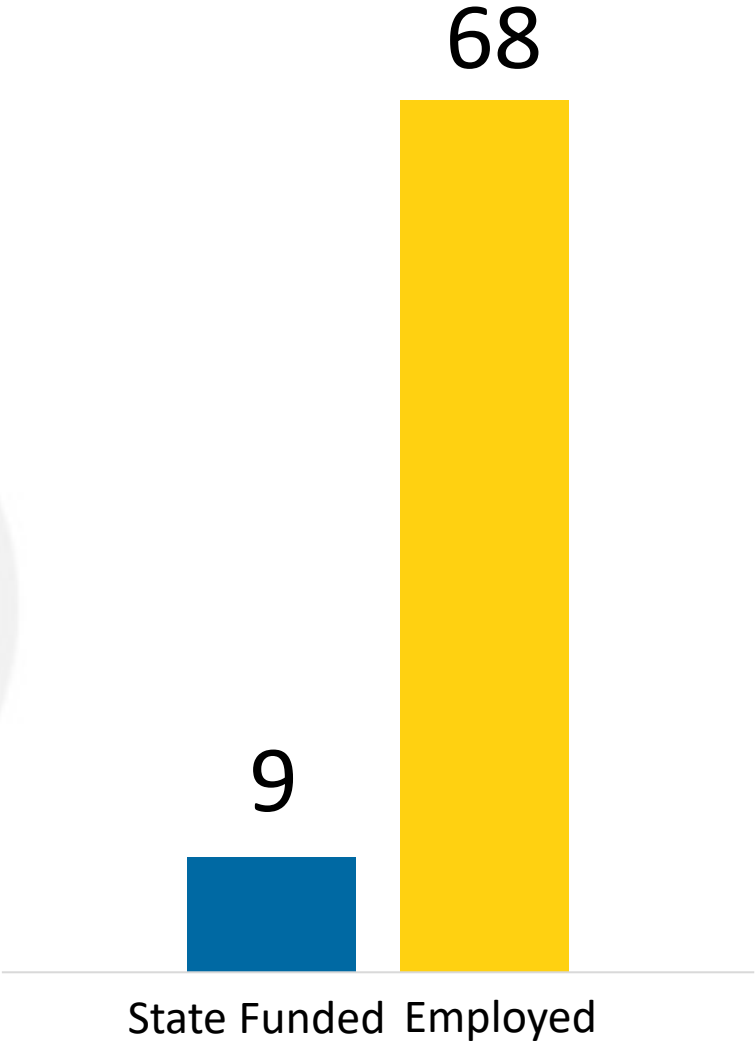
EP&O Renewal

- Bridges funding gap between what the state provides and what the district needs
 - Child nutrition programs, social-emotional health, and special education programs
 - Teacher pay and support staff like mental health counselors
 - STEM and CTE programs for students, ensuring career opportunities after graduation
 - Student athletics, music, and other extracurricular activities



Our Funding Gap

Nurses

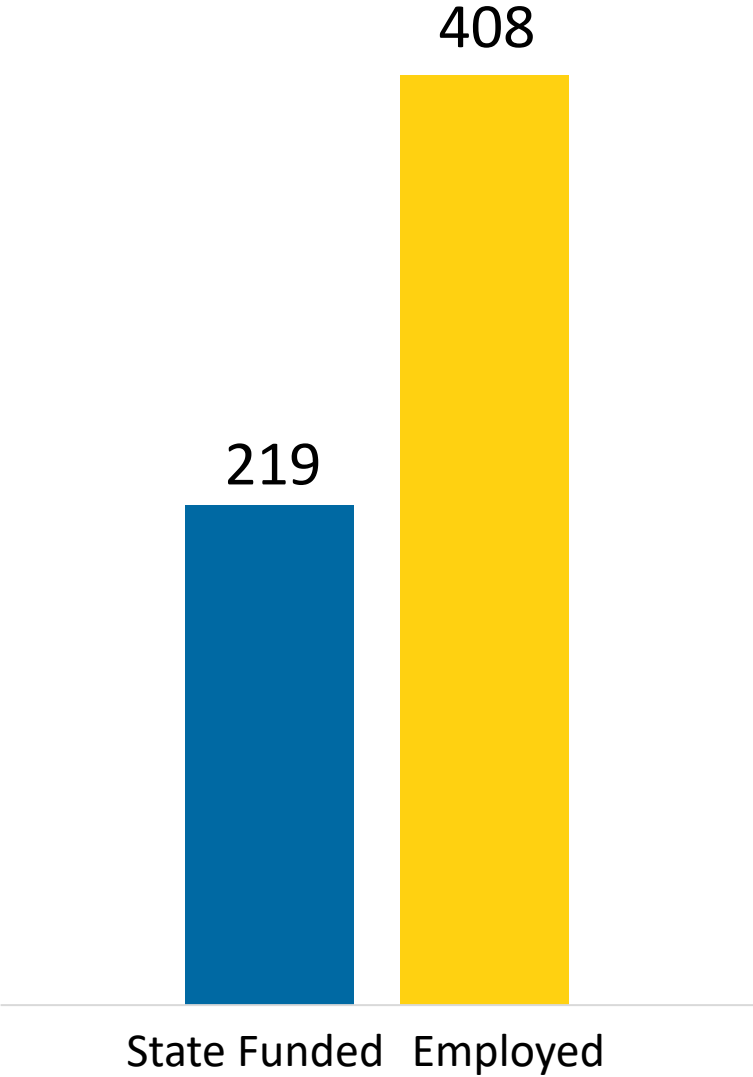


*Number reflects current district employees, funding comes from multiple sources, such as district funding, grant funding, school discretionary funding or PTSAs.

Our Funding Gap

Custodians

The state funds 219 custodians to care for more than 3,200 classrooms. We employ 408.

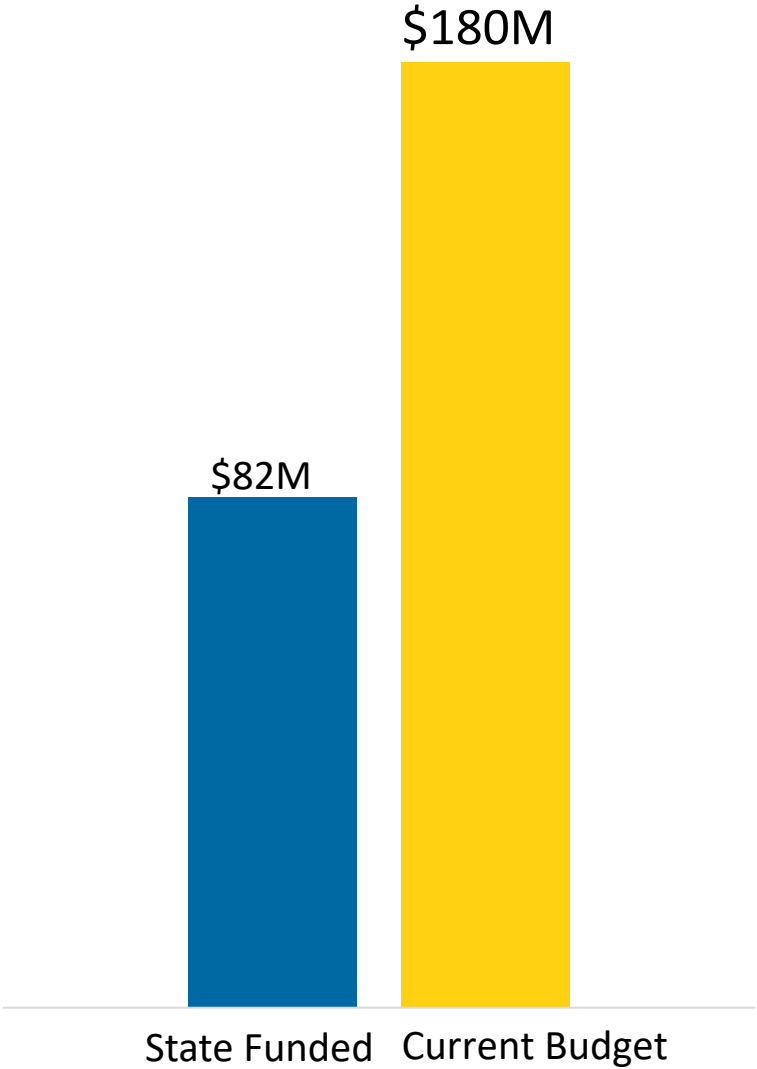


*Number reflects current district employees, funding comes from multiple sources, such as district funding, grant funding, school discretionary funding or PTSAs.

Our Funding Gap

Special Education

To ensure our 7,600 students who need special education services have the supports they need, we spend \$180 million a year for special education. That's a \$98 million gap.



*Number reflects current district employees, funding comes from multiple sources, such as district funding, grant funding, school discretionary funding or PTSAs.

EP&O Levy Financial Summary

- Levy amount \$646.8 million over three years
- The rate is 74 cents per \$1,000 of assessed value
- Current amount set by state law = 63 cents per \$1,000 of assessed value
- SPS asking for 11 cents more per than amount currently allowed because state laws could change, or enrollment could grow
 - Cannot collect extra 11 cents unless state laws change

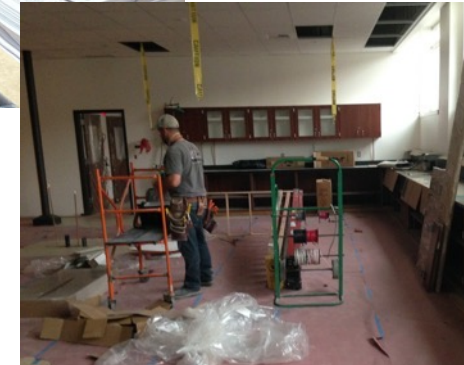
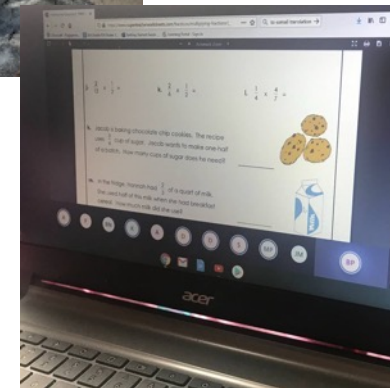
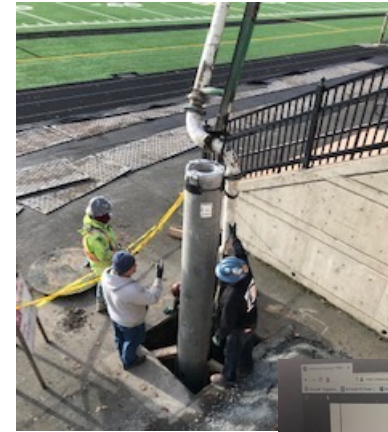


Buildings, Technology, and Academic/Athletics V Capital Levy (BTA V) Renewal



Capital Levy Renewal

- 6-year levy
- Replaces expiring BTA IV capital levy
- **Buildings** Projects
 - Small renovations
 - Major maintenance
 - Improvement projects
- **Technology** Funding
- **Academics/Athletics** Projects and Funding



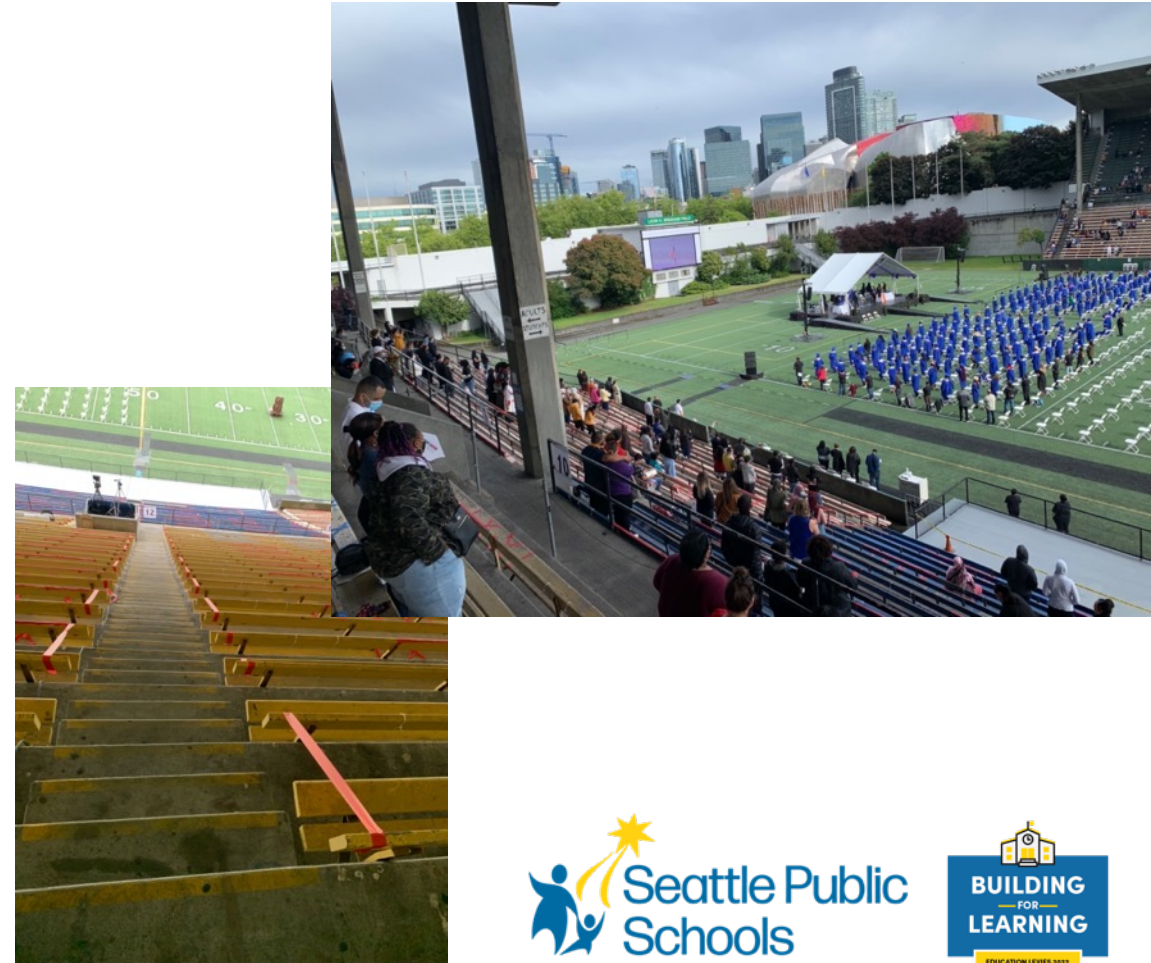
Proposed Project List Development

- Consultant report on the condition of school buildings
- Use available facilities condition data
- Develop cost estimates
- Assign priority number to each project
- Identify technology needs
- Refine the list using Board policy and Guiding Principles, which include using an equity lens
- Review proposed projects with BEX and BTA Capital Levies Oversight Committee
- Recommendation to School Board — Priority 1 projects



Memorial Stadium Replacement

- Districtwide resource for graduation, high school athletics, and community use
- Earthquake safety repairs will require demolition and replacement of grandstands



Proposed Building and System Improvements

- Sites and Playgrounds
 - Asphalt repairs/replacements and stormwater system repairs
 - Playground equipment and safety surfaces; accessibility



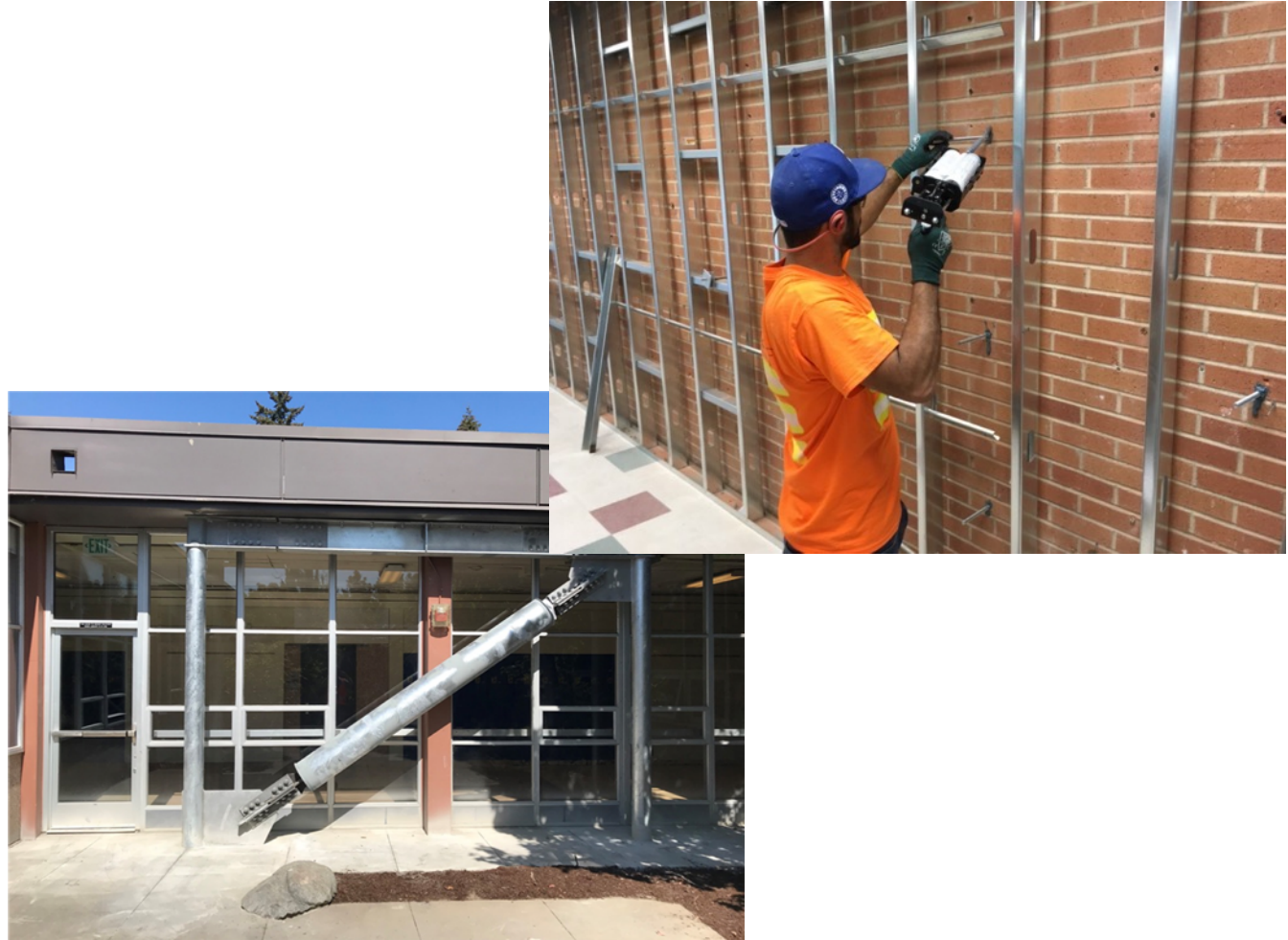
Proposed Building and System Improvements

- Exterior Repairs/Replacements
 - Windows and doors
 - Roofs
 - Masonry



Proposed Building and System Improvements

- Safety and Security
 - Seismic improvements for earthquake safety
 - Fire alarms
 - Fire sprinklers
 - Security



Proposed Building and System Improvements

- Building Systems
 - Ventilation, heating
 - Plumbing
 - Electrical
 - Lighting
 - Intercoms



Proposed Building and System Improvements

- Other Projects
 - Secure entry vestibules
 - ADA/accessibility
 - Restrooms
 - Clean energy
 - Central kitchen



BTA V Technology Funding

Capital Levies Fund 85%
of Department of Technology Services (DoTS)



BTA V Technology Project Selection Focus

- Align with Board Guiding Principles for BTA V
- Three main areas of funding
 - Student Learning and Support
 - District Systems and Data
 - Infrastructure and Security



BTA V Technology Funding Increase

- Significant increase in technology costs due to past year's digital transformation across the entire district
- Nearly 91,000 devices managed (students, staff, classrooms, teachers)



Technology Project Selection Priorities

- Racially-equitable tools and student learning support
- Annual maintenance and support of current technology infrastructure
- Data privacy and user experience
- Refresh computers and tablets on regular schedule for all students and staff



Academics/Athletics Funding

- Special Education program modifications
- Program placement
- Athletic field replacement/field lights/equipment
- Arts equipment
- Science equipment



BTA V Capital Levy Financial Summary

- Staff recommendation: \$765 million over 6 years
 - Addresses all priority 1 projects
 - 46 cents per \$1,000 of appraised value
 - 3 cents more than BTA IV in 2016
 - Technology amount double 2016 with 1:1 and other tech changes



Next Steps

- Meetings this week with the public to inform about the process, answer questions
- Share questions and comments with Seattle School Board
- Seattle School Board makes decisions about what goes into the levies: Decision expected November 3, 2021
- Seattle voters make decisions about whether the levies pass: Election date, February 8, 2022

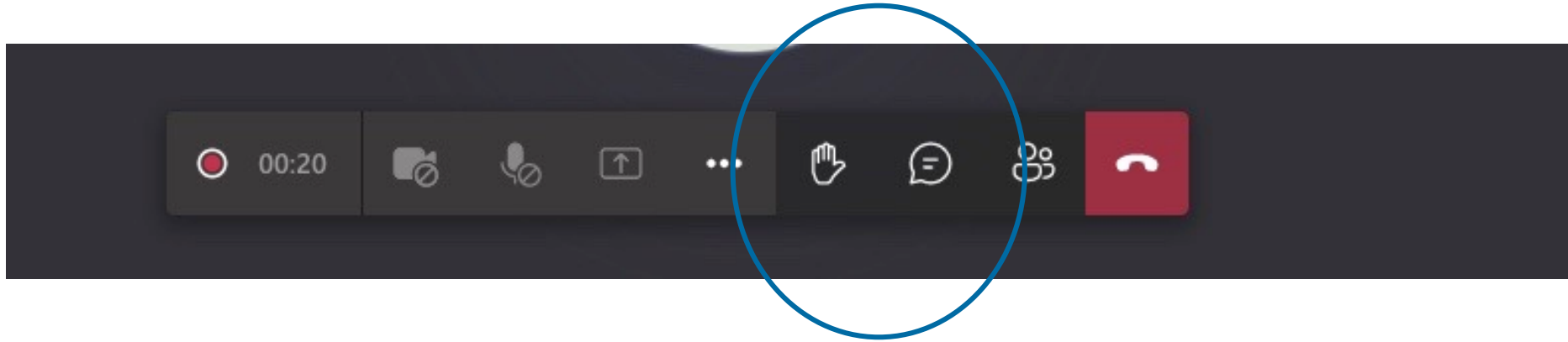


Question and Answer Session



What Else Do You Want to Know About Levies?

- Please raise your hand by clicking on the icon



- You may also put your question or comment in Chat using the chat bubble icon
- Focus on answering questions and taking comments on what is presented
- Please use the Let's Talk online questions and feedback form for other information you want shared with the Seattle School Board — or for additional questions

– **www.seattleschools.org/levies**