

Seattle Public Schools

MADISON MIDDLE SCHOOL

SCHOOL DESIGN ADVISORY TEAM WORKSHOP #3
JULY 30, 2020



PARTICIPANTS

JASMINE RIACH
JENNIFER SLATKIN
MATT JOHNSON
STEVE LEE
VINCE GONZALES
DENNIS ERWOOD
DR. ROBERT GARY

Seattle Public Schools

MADISON MIDDLE SCHOOL

PARTICIPANTS

Name	Role
Dennis Erwood	Architect/PIC – SMS
Steve Lee	Project Manager – SMS
Matt Johnson	Architect – SMS
Kris Feliciano	Project Coordinator – SMS
Darren Hunter	Special Education Teacher
Jennifer Slatkin	School Psychologist
Robert Gary	Principal
Ilana Malone	Counselor
Vince Gonzales	SPS/Project Manager

Seattle Public Schools

MADISON MIDDLE SCHOOL

AGENDA

- 10:00 Review Outcomes from SDAT #2
Criteria Prioritization Results
- 10:30 Building & Site Development
- 11:00 Building Organization Presentation
Construction impact
- 11:20 Summarize & Next Steps
- 11:30 Dismiss

JASMINE:

+ INQUIRED IF DESIGN TEAM LOOKED INTO ADDING THE ADDITION TO THE SOUTH SIDE OF THE SITE, BETWEEN THE 1929 BUILDING AND THE GYM. THIS WOULD ALLOW A CONNECTION BETWEEN THE GYM AND SCHOOL BUILDING TO HELP WITH SECURITY AND MINIMIZE UNSECURED DOORS

+ ASKED IF THERE WAS A POSSIBILITY OF THE PROJECT NOT HAPPENING WITH BUDGET CUTS OCCURING DUE TO COVID

STEVE:

+ DESIGN TEAM LOOKED INTO THIS OPTION BUT THIS WOULD REMOVE NEEDED PARKING SPACES. THIS OPTION WOULD ALSO TRIGGER A DIFFERENT PERMITTING PROCESS AS THE CONDITIONAL USE PERMIT THAT WAS ISSUED FOR THE GYM WOULD NOT APPLY TO A NEW ADDITION. LANDMARKS MAY NOT HAVE APPROVED OF THIS LOCATION AS WELL.

VINCE:

+ PROJECT IS BEING FUNDED THROUGH DISTRESSED SCHOOL GRANT AND SO THE MONEY IS ALREADY ALLOCATED FOR THE PROJECT

POTENTIAL OPTION / SCIENCE CURRICULUM DISCUSSION

- **Additional Comments:**

Existing Site:

- What can we do with the existing rock terrace at the westward side of the school when we may have to tear up parts of it for new addition utilities
- New addition would require a 20' separation for code reasons, this also allows us to keep the existing windows in the classrooms that will face the new addition.

Existing Science Rooms:

- Science classrooms are set up in same way regardless of what grade they serve so as to make them interchangeable between grade levels.
 - Classrooms include: 6 sinks, gas/air hookups, fridges and shared prep room.
- One 8th grade science classroom is set up as lab space with a fume hood.
- Further discussion will take place with Mary Margaret regarding science curriculum needs.
- Science Prep Rooms are being shared between 2 science classrooms. It would be preferred that the prep room would be shared between classrooms on the same floor but this isn't a necessity.
- Design team would look at the possibility of adding small prep room for each science classroom if we were to stack the classrooms in the new addition. Stacking the program spaces decreases building costs. Co-teaching would work best with classrooms on the same floor.



Seattle Public Schools

MADISON MIDDLE SCHOOL

SCIENCE CURRICULUM DISCUSSION

- **MaryMargaret Feedback:**

Proposed Science Classrooms:

- **Class size of 32 students**
- **2 lab teams per sink plus teacher sink for total of 5 sinks**
- **No need for epoxy chemical resistant countertops**
- **No need for gas and air or fume hood**
- **Storage of science kits within casework**
- **Chemical storage and flammable storage cabinets only needed in prep room**

JASMINE:

- + ASKED WHY SCIENCE CLASSROOMS WERE SMALLER
- + SCIENCE CLASSES ARE OFTEN OVER ENROLLED. OFTEN TIMES 32 STUDENTS OR MORE
- + WOULD LIKE DESIGN TEAM TO LOOK INTO ADDING A HANDWASH SINK

VINCE/STEVE:

- + CLASSROOMS WERE BASED OFF OF EAGLE STAFF MEANY MIDDLE SCHOOL'S CLASSROOM LAYOUT
- + GRANT MONEY DID NOT CALL OUT FOR SCIENCE CLASSROOMS SO IN WORKING WITH MARYMARGARET, DESIGN TEAM WORKED TO INCORPORATE SCIENCE CLASSROOMS INTO THE BUDGET

Seattle Public Schools

MADISON MIDDLE SCHOOL

CRITERIA PRIORITIZATION

CRITERIA	HIGH	LOW
Collaborative Environment		
Windows for Natural Light		
Child-Centered / Oriented to Student Needs		
Invites / Supports / Builds Community		
Maximize Views / Windows		
Flexible / Multi use of Spaces		
Site line / Supervision		
Classroom wing Connection to School		
Well Lit Classrooms and Hallways (Natural / Artificial		
Acoustics		
Security		
Outdoor Spaces		
Equity		
Accessibility		
Open / Wide Hallways		
Technology		
Sustainable / Green Classrooms		
Maintain Character of Historic Building		

studio **MENG**
STRAZZARA



CRITERIA DEVELOPMENT / PRIORITIZATION - RESULTS

Criteria Prioritization – Meeting Results

The list of criteria was compiled from suggestions and discussion among attendees at the 2nd SDAT workshop held on April 28. These are important criteria to Madison Middle School that should be considered when designing the new school addition.

Attendees indicated their top 6 choices for the criteria that DEFINITELY must be considered and their bottom 6 choices that are not as important as the others.

An option could only be voted on one time.




CRITERIA PRIORITIZATION

CRITERIA	HIGH	MED	LOW	WEIGHT	WEIGHT %	RANK
weight:	25	10	1			
number of people voting:	4					
number of votes	24		24			
6. Classroom wing Connection to School	4	0		100	11.6%	1
8. Security	3	1		85	9.8%	2
13. Well-lit classrooms and hallways (natural/day light and artificial light)	3	1		85	9.8%	2
2. Child-centered / Oriented to Student Needs	2	2		70	8.1%	3
5. Site line / Supervision	2	2		70	8.1%	3
11. Accessibility	2	2		70	8.1%	3
16. Windows for natural light	2	2		70	8.1%	3
12. Open / Wide Hallways	2	1	1	61	7.1%	4
18. Technology	2	1	1	61	7.1%	4
10. Equity		4		40	4.6%	5
7. Acoustics	1	1	2	37	4.3%	6
14. Maximize views / windows	1	1	2	37	4.3%	6
4. Flexible / Multi use of Spaces		2	2	22	2.5%	7
1. Collaborative Environment		1	3	13	1.5%	8
3. Invites / Supports / Builds Community		1	3	13	1.5%	8
9. Outdoor Spaces		1	3	13	1.5%	8
17. Maintain character of original (historic) building		1	3	13	1.5%	8
15. Sustainability / green classrooms		0	4	4	0.5%	9
SUBTOTAL	24	24	24	864	100.0%	

CRITERIA DEVELOPMENT / PRIORITIZATION - RESULTS

Top Criteria:

1. Classroom wing connection to school
2. (Tie) Security
2. (Tie) Well lit Classrooms and Hallways (Natural / Artificial)
4. (Tie) Child Centered / Oriented to Student Needs
4. (Tie) Site Line / Supervision
4. (Tie) Accessibility
4. (Tie) Windows for Natural Light
8. (Tie) Open / Wide Hallways
8. (Tie) Technology

STEVE:

+ SECURITY CRITERIA DEALT MORE WITH THE SITE AS A WHOLE, ENSURING LOCKED AND SECURED DOORS AND ACCESS TO BUILDING

+ SITE LINE / SUPERVISION IS WITHIN THE BUILDING ITSELF - BEING ABLE TO SEE ALL OF THE KIDS ALL OF THE TIME

Seattle Public Schools

MADISON MIDDLE SCHOOL

SITE DEVELOPMENT



LOCATION OF
PROPOSED ADDITION.

LOCATION OF EXISTING
PORTABLES ON SITE

ORIGINAL 1929 MADISON
MIDDLE SCHOOL

EXISTING GYM
ADDITION

EXISTING SITE

Seattle Public Schools

MADISON MIDDLE SCHOOL

SITE DEVELOPMENT



ROTATION OF BUILDING
TO ORIENT TO VIEWS

PORTABLES TEMPORARILY
MOVED ADJACENT TO
EXISTING PORTABLES ON
PARKING LOT – DURING
CONSTRUCTION ONLY

ORIGINAL 1929 MADISON
MIDDLE SCHOOL

EXISTING GYM
ADDITION

SITE DURING CONSTRUCTION

Seattle Public Schools

MADISON MIDDLE SCHOOL

SITE DEVELOPMENT



ROTATION OF BUILDING
TO ORIENT TO VIEWS

ALL PORTABLES REMOVED
FROM SITE

ORIGINAL 1929 MADISON
MIDDLE SCHOOL

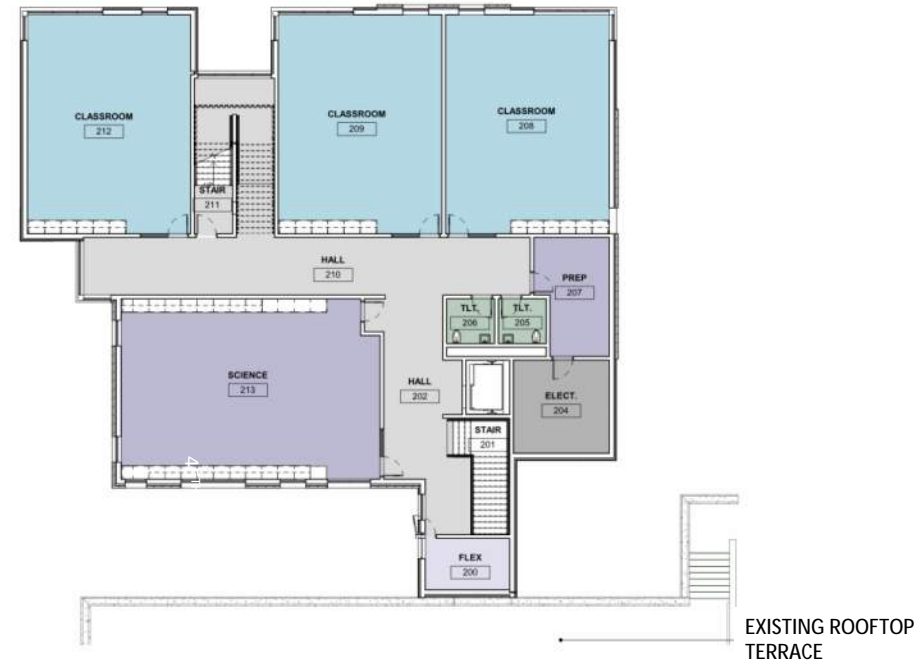
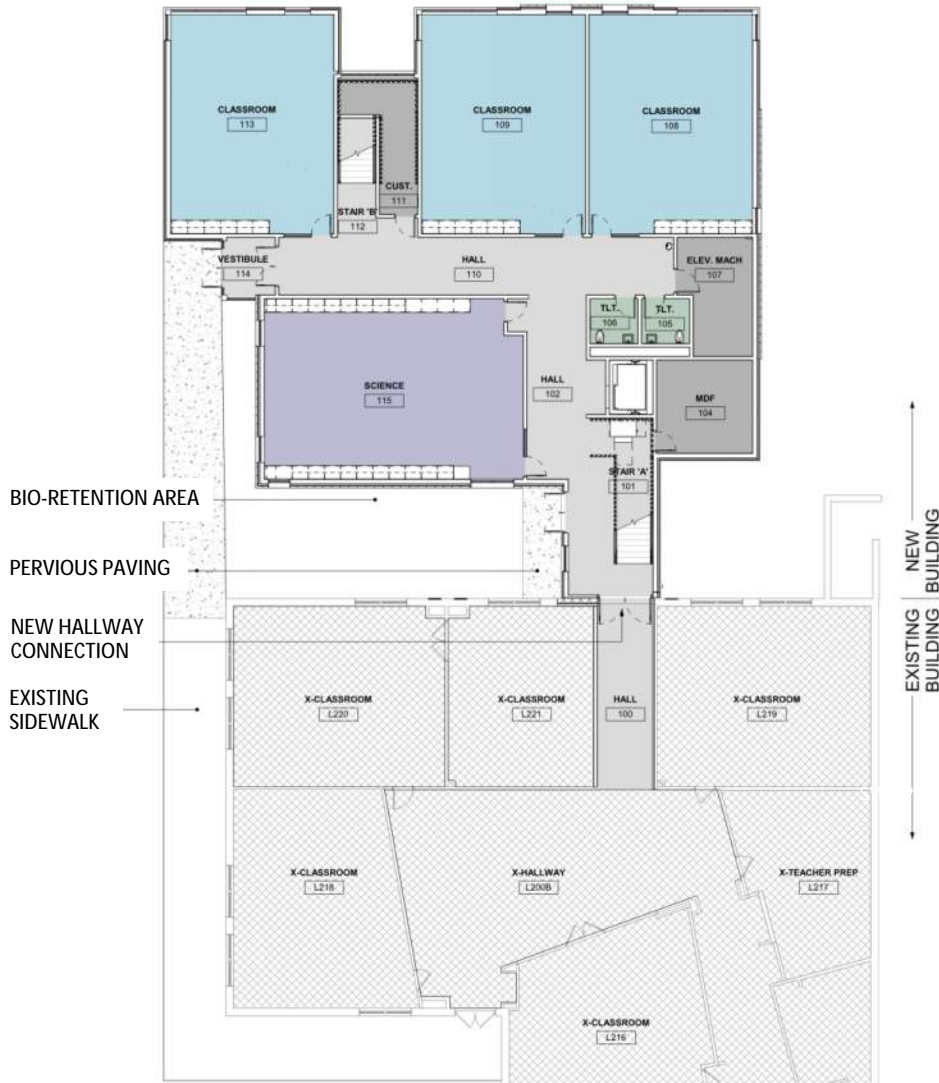
EXISTING GYM
ADDITION

COMPLETED PROJECT SITE

Seattle Public Schools

MADISON MIDDLE SCHOOL

OPTION 'A' PARALLEL



Department Legend

- CIRCULATION
- CLASSROOM - GENERAL
- RESTROOM
- SCIENCE, TECH
- UTILITY / STORAGE / CUSTODIAL
- EXISTING

studio **MENG STRAZZARA**



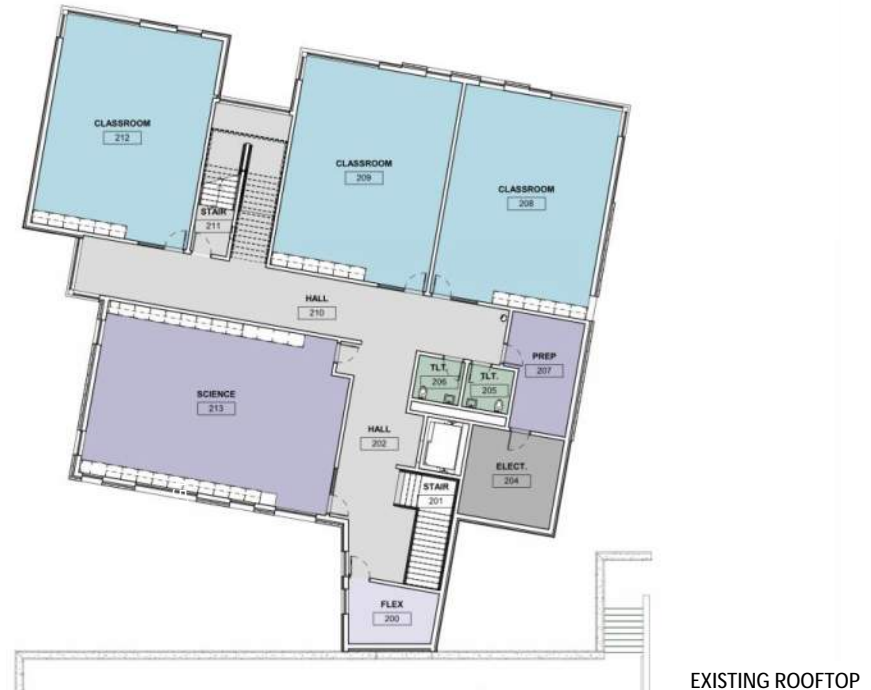
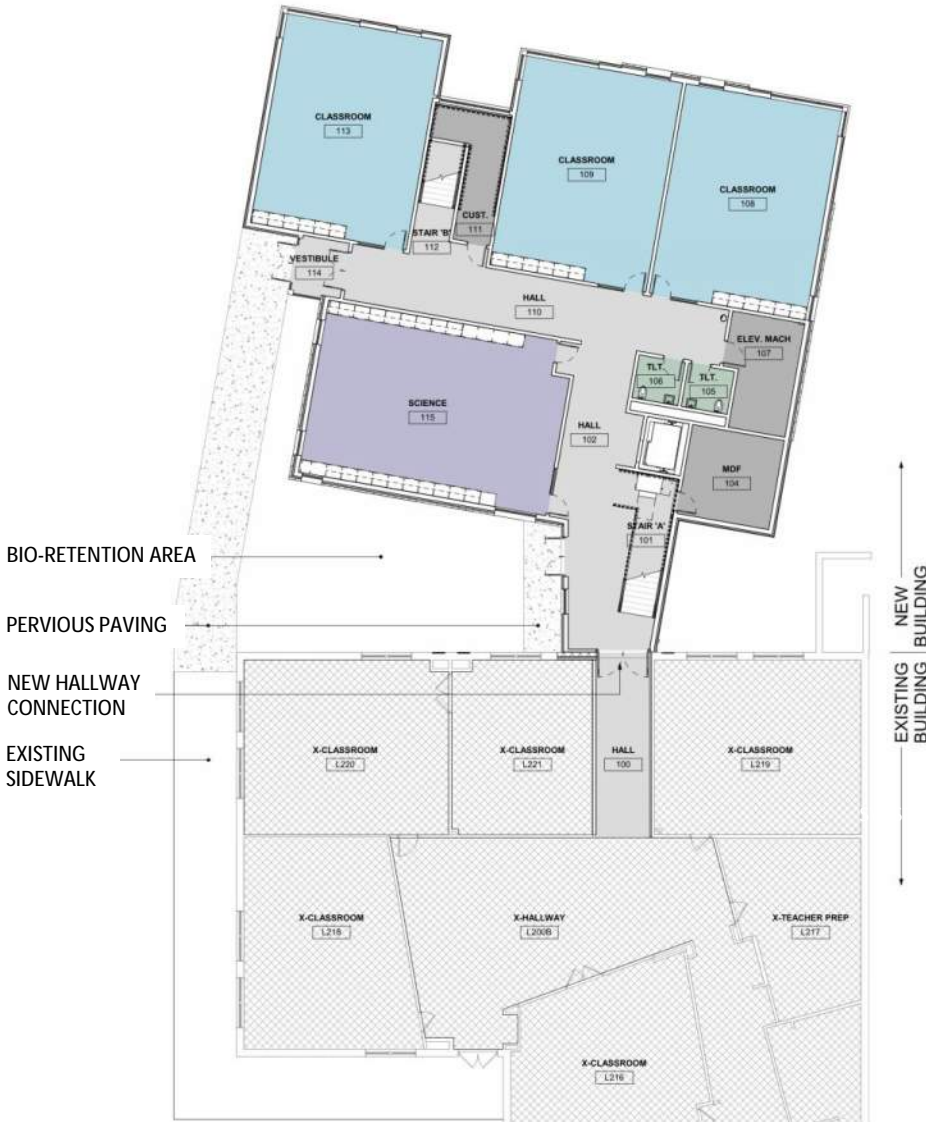
Seattle Public Schools

MADISON MIDDLE SCHOOL

STEVE:

+ ROTATING BUILDING 10 DEGREES OPENS UP THE COURTYARD BETWEEN. CREATES BETTER SCALE ALONG HINDS STREET AS PEDESTRIANS ARE NOT FACED WITH THE ENTIRE LENGTH OF THE WALL

OPTION 'A' 10 DEGREES



Seattle Public Schools

MADISON MIDDLE SCHOOL



JASMINE:

+ CONCERNED THAT CONCRETE FOUNDATION WALL WOULD BE PROMINENT AREA FOR GRAFFITI

STEVE:

+ DESIGN TEAM IS PROPOSING ADDITIONAL LANDSCAPING AROUND FOUNDATION WALL TO OBSCURE IT AS WELL AS ANTI GRAFFITI COATING

VIEW FROM SW HINDS ST.

Seattle Public Schools

MADISON MIDDLE SCHOOL



VIEW FROM FIELD

STEVE:

- + DESIGN IS LOOKING AT MIXTURE OF METAL PANEL AS WELL AS BRICK TO COMPLEMENT THE NEW ADDITION AGAINST THE ORIGINAL BUILDING
- + PATTERNING AND COLORS HAVE NOT BEEN COMPLETELY WORKED THROUGH YET AND WILL CONTINUE TO EVOLVE DURING THE DESIGN PROCESS

JASMINE:

- + LIKED LOOK OF BUILDING AND HOW IT HONORS 1929 BUILDING WITH UPDATED MODERN AESTHETIC

Seattle Public Schools

MADISON MIDDLE SCHOOL



JASMINE:

+ HOW CAN PROJECT DETER STUDENTS FROM CONGREGATING IN THE AREA BETWEEN THE NEW ADDITION AND EXISTING?

+ CAN LIGHTING BE PROVIDED IN THE COURTYARD TO HELP DETER STUDENTS CONGREGATING?

STEVE:

+ SPACE BETWEEN NEW ADDITION AND EXISTING ONE STORY BUILDING WILL BE A BIO-RETENTION AREA WITH PLANTING AND PAVERS

+ DESIGN TEAM WILL LOOK AT ADDITIONAL WAYS TO DETER CONGREGATION IN THIS AREA INCLUDING LIGHTING AND/OR ORNAMENTAL FENCING

VIEW INTO COURTYARD

Seattle Public Schools

MADISON MIDDLE SCHOOL

SUMMARY & NEXT STEPS

- Design team is moving into Design Development
 - Incorporating SDAT input and criteria priorities
- Prepare and distribute presentations to Madison School community
- SEPA process and community feedback
 - Virtual meeting for community involvement?

VINCE:

- + LOOKING INTO VIRTUAL MEETING FOR COMMUNITY AND SURROUNDING RESIDENTS IN THAT DESIGN TEAM WOULD DO A PRESENTATION OF PROJECT
- + WOULD PROBABLY BE LATE SEPTEMBER OR EARLY OCTOBER

Seattle Public Schools

MADISON MIDDLE SCHOOL



THANK YOU FOR PARTICIPATING!