



Enrollment and Equity

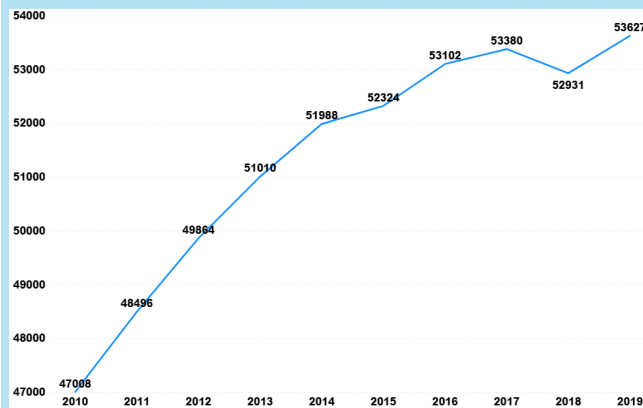
Demographer Newsletter

FALL 2020

Enrollment News

School Enrollment

October 1st Enrollment Counts



Increase in Enrollment

Top Three Neighborhoods with Growing K-12 Enrollment from 2018-19 (Based on October 1st Enrollment Counts):

1. Eckstein Service Area, **53.7%** increase
2. Mercer Service Area, **43.3%** increase
3. Madison Service Area, **25.1%** increase

[View a Map of the Service Areas](#)

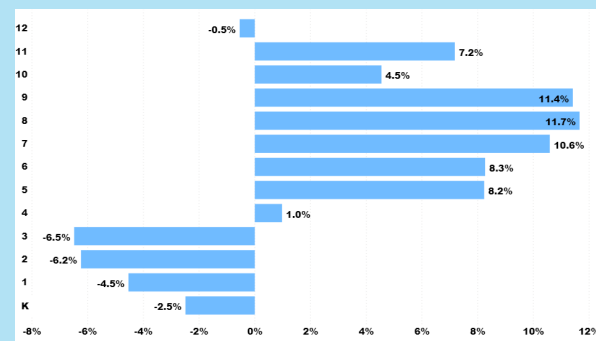
This year, enrollment is projected to reach **54,027**. However, 2020 enrollment numbers may be impacted by COVID-19. Enrollment growth has been concentrated to the most crowded schools in the district that continue to face building capacity concerns. In response to enrollment growth in these schools, Enrollment Planning has been assessing the impacts of possible capacity relief measures.

Enrollment Planning Response

In June, the School Board approved a cap on enrollment for Mercer Middle School (in effect until the end of the 2020-21 school year). This measure will relieve capacity issues in Mercer and distribute students to under enrolled schools in the area. The impacts of possible long-term solutions are being assessed by Enrollment Planning. Possible capacity relief methods for the Eckstein area and Green Lake Elementary are still under consideration.

[View Boundary Change Updates](#)

Percent Change in Enrollment by Grade (2015-2019)



In the last five years, middle schools and high schools have seen the largest increase in students enrolled while elementary schools saw the largest decrease. Kindergarten enrollment reached its peak in 2012-13. Since then, it has decreased due to a declining birth to kindergarten ratio. The chart above shows this cohort of students progressing through grades up to 2019.

Seattle Housing

Seattle Housing Authority Partnership

Seattle Public Schools works with the Seattle Housing Authority to build strong housing partnerships and connect families to new housing opportunities. *View the [Seattle Housing Authority Website](#)*

New SHA Housing:

Impacted Schools: Olympic View Elementary, Jane Addams Middle School, and Nathan Hale High School

In February, the SHA announced plans for a Northgate development. The Northgate Commons will include 211 affordable housing units and will be near the Northgate light rail station, opening in 2021. More information can be found on the [SHA website](#).

Bellwether and Mercy Housing:

Impacted Schools: Green Lake Elementary, Eckstein Middle School, and Roosevelt High School

In May, Bellwether and Mercy Housing announced the building of a new development at Cedar Crossing. The development will include 254 affordable housing units and is expected to be completed in 2022. More information can be found on the [Mercy Housing website](#).

View Existing Affordable Housing Developments on the [Mercy Housing Website](#)

News and Updates

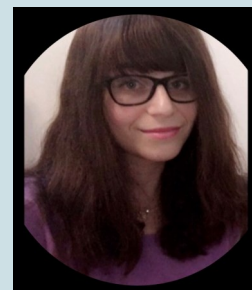
What's Happening in the District

- Seattle Public Schools will begin the 2020-21 school year remotely. The School Board approved a state required reopening plan on August 12, which includes a remote start for the fall. Updates can be found on our [website](#).
- Free meals are being offered to students and families during the summer months. This service will continue into the fall. Learn more about our meal support program on our [website](#).
- Seattle Public Schools is committed to racial justice and recognition of the lived experiences of our Black youth. Learn how you can support the Black Lives Matter movement on our [website](#).

What's Happening Outside the District

- [City Partners with Kappa Alpha Psi to Deliver Supplies to Unsheltered Members of Community](#)
- [Celebrating the Emergency Child Care Program for Essential Workers](#)
- [City and Comcast invest \\$100K to address digital equity](#)

Meet Our Staff



My name is Jeanine Needles and I am the new Demographer working in the Enrollment Planning department. After graduating from the Evans School of Public Policy and Governance at UW in June, I joined Seattle Public Schools with the goal of having a positive impact in the educational system through applying my skills in research and data analysis. I am excited to collaborate with my amazing team to support all students in our District through our many partnerships and data reporting.

Part of my work with Enrollment Planning is to provide our community with enrollment growth and equity related updates on a quarterly basis. I will work to ensure that the content provided in this quarterly newsletter is informative, transparent, accessible, and equity-centered. I'm happy to have this opportunity to share with our community all of the great work that happens at SPS.

Thank you for reading!

If there is a topic you would like to see covered in our next newsletter, please email the following address.

Jeanine Needles

Enrollment Planning Demographer
jwneedles@seattleschools.org