



# **SCHOOL BOARD ACTION REPORT**

**DATE:** October 10, 2019  
**FROM:** Ms. Denise Juneau, Superintendent  
**LEAD STAFF:** Concepcion Pedroza, Chief of Student Support Service  
[clpedroza@seattleschools.org](mailto:clpedroza@seattleschools.org), (206) 252 - 0693  
Ashley Davies, Director of Enrollment Planning  
[aedavies@seattleschools.org](mailto:aedavies@seattleschools.org), (206) 252-0358

**For Introduction:** October 16, 2019  
**For Action:** November 6, 2019

## **1. TITLE**

Approval of the Student Assignment Transition Plan for 2020-21

## **2. PURPOSE**

This Board Action Report updates the Student Assignment Transition Plan for 2020-21.

## **3. RECOMMENDED MOTION**

I move that the Board approve the Student Assignment Transition Plan for 2020-21, as attached to the Board Action Report.

## **4. BACKGROUND INFORMATION**

The New Student Assignment Plan was approved by the School Board in 2009 to provide greater predictability for families while still offering opportunities for school choice. Annual updates to the Plan have subsequently been approved by the School Board within the Student Assignment Transition Plan. The 2009 New Student Assignment Plan was created when major changes to assignment policies took place, but the information in that document is now updated and maintained in more recent documents. The Board Action would update the most recent Student Assignment Transition Plan.

The provisions of the attached document, the Student Assignment Transition Plan for 2020-21, will prevail in the case of any conflicts with previously approved Plans, boundaries, and/or GeoZones.

The provisions of this action are to update information in the Student Assignment Transition Plan. The Transition Plan for 2020-21 continues most of the assignment rules in effect during 2019-20. Some highlights and changes are:

- Changing the location of Licton Springs K-8 to the Whitman Service area and updating the Licton Springs GeoZone to extend to the west boundary of the district;
- Expansion of GeoZones for Cleveland HS, Cedar Park ES, South Shore PK-8, Hazel Wolf K-8, Orca K-8, Salmon Bay K-8, Stem K-8, and Thornton Creek ES to align GeoZones with walk zones;

- Increase of the native/heritage set aside to 20% from 15% for John Stanford (JSIS) and McDonald International Schools; and
- Updating Advanced Learning (AL) assignment language and tiebreakers to reflect the fact that all schools offer AL programming and eligible students will be assigned to AL at their attendance area school.

**a. Alternatives** Do not approve the updated Student Assignment Transition Plan. This is not recommended by district staff. If the School Board does not approve the Student Assignment Transition Plan for 2020-21, there would be walk zones that continue to be outside the GeoZone; Licton Springs K-8 would remain on the Robert Eagle Staff Campus without sufficient space or room to grow; the AL language would continue to be outdated; ~~Technology Access Foundation (TAF) would not be able to implement its partnership with SPS in support of students; and Green Lake ES would continue to be overcrowded.~~

At the Operations Committee Meeting on October 3rd, the Board proposed increasing the native/heritage set aside for McDonald and JSIS from 15% to 20% and not to change their GeoZones as was initially proposed to help provide some relief to the overcrowding at Green Lake. The result will likely have a small adverse impact on already constrained space at Green Lake. It would increase overcrowding by limiting the number of Green Lake residents who are likely to get into McDonald and JSIS, thus they would attend Green Lake.

## 5. FISCAL IMPACT/REVENUE SOURCE

The fiscal impact to this action will be the cost of up to two additional buses required to maintain transportation for Licton Springs students with the move to Webster although students would try to be accommodated with the existing routes. The cost of a bus for the 2020-21 school year will be \$83,741.81. The recommendation would be to provide continued bus service to current students who would now need transportation until they complete the highest grade offered at Licton Springs K-8.

The revenue source for this motion is N/A

Expenditure:  One-time  Annual  Multi-Year  N/A

Revenue:  One-time  Annual  Multi-Year  N/A

## 6. COMMUNITY ENGAGEMENT

With guidance from the District's Community Engagement tool, this action was determined to merit the following tier of community engagement:

Not applicable

Tier 1: Inform

Tier 2: Consult/Involve

Tier 3: Collaborate

The changes in the Student Assignment Transition Plan for 2020-21 clarify language and align programs and services to better support student needs. The changes are responsive to community feedback around aligning the GeoZones and walk zones, and changes help provide capacity relief for overcrowded schools.

The Seattle Public Schools' Superintendent held three community meetings with families and staff at Licton Springs K-8 to discuss the schools future as a K-8 which requires room to grow. The community expressed the challenges of sharing space, their desire to remain a K-8, and the need for more room to grow their enrollment. As a result, the district is proposing moving Licton Springs as a K-8 to the Webster School Building in the 2020-21 school year.

The district has heard from families that students living in an option school's walk zone should also be in the school's GeoZone, yet this was not the case. As a result, the district is proposing the expansion of eight GeoZones that are not aligned with the walk zones. The only exceptions are McDonald and JSIS, since this change would not support capacity relief at neighboring schools. JSIS and McDonald were not included in the alignment of the GeoZones and walk zones since aligning the walk zones and GeoZones would not provide more capacity relief for Green Lake ES.

The initial proposal to expand the McDonald and John Stanford International GeoZones was a response to community requests to address the overcrowding at Green Lake. On September 17, a community meeting was held at Green Lake Elementary to engage families about the proposed geozone change as well as long-term strategies for enrollment relief. Some Green Lake families expressed support for the change while other families from McDonald and John Stanford International School were concerned that the geozone expansion would restrict access to the schools for families from other parts of Seattle. As a result, the Board would not like to move forward with the GeoZone change. In addition, several years ago, a Dual Language Immersion Task Force recommended increasing the native/heritage seats to 30%. The Operations Committee discussed wanting to explore the impacts of this further and change to a 20% set aside for the 2020-21 school year from 15% was a step towards that.

## **7. EQUITY ANALYSIS**

The Racial Equity Tool was used to develop the 2020-21 Student Assignment Transition Plan recommended changes. The proposed changes to the Student Assignment Transition Plan do not disparately impact historically underserved students. Changes to Geozones help reduce overcrowding which improves student environments and learning. Providing transportation to students impacted by the move of Licton Springs helps to mitigate the impact of this change for students.

## **8. STUDENT BENEFIT**

The changes in the Student Assignment Transition Plan for 2020-21 clarify language and align and provide programs and services to better support student needs. Changes to Geozones help reduce overcrowding which improves student environments and learning.

**9. WHY BOARD ACTION IS NECESSARY**

- Amount of contract initial value or contract amendment exceeds \$250,000 (Policy No. 6220)
- Amount of grant exceeds \$250,000 in a single fiscal year (Policy No. 6114)
- Adopting, amending, or repealing a Board policy
- Formally accepting the completion of a public works project and closing out the contract
- Legal requirement for the School Board to take action on this matter
- Board Policy No. \_\_\_\_\_, [TITLE], provides the Board shall approve this item
- Other: The Board Approved Student Assignment Transition Plan requires Board approval to any changes to changes to boundaries, option school GeoZones, feeder patterns or assignment rules.

**10. POLICY IMPLICATION**

Board Policy No. 3130, Student Assignment, states that students shall have the opportunity to attend an elementary, middle, or high school based in a designated attendance area based upon home address, unless the school designated by a student’s home address does not have appropriate services for the student’s needs, as determined by the District.

Per the Student Assignment Transition Plan, any changes to boundaries, geographic zones, feeder patterns, or assignment rules after implementation of the Student Assignment Plan require Board action.

Board Policy No. 2200, Equitable Access to Programs and Services, states, “It is the policy of the Seattle School Board that programs and services be developed, replicated, and placed in support of district-wide academic goals that address systemic needs and support quality education for all students within the context of the current student assignment plan.”

Board Policy No. H13.00, Capacity Management, discusses the need to take actions to match capacity and enrollment, including the addition, relocation or removal of programs.

**11. BOARD COMMITTEE RECOMMENDATION**

This motion was discussed at the Operations Committee on October 3, 2019. The Committee reviewed the motion and recommended bringing the Student Assignment Transition Plan to the full Board for consideration on October 16, 2019.



**12. TIMELINE FOR IMPLEMENTATION**

Upon approval of this motion, the Student Assignment Transition Plan will go into effect for the 2020-21 school year, and all school years subsequent until further action is taken by the School Board. The Plan will be uploaded to the District's Enrollment Planning and Admissions webpages for access by the public.

**13. ATTACHMENTS**

- Student Assignment Transition Plan for 2020-21 (Clean for approval)
- Student Assignment Transition Plan for 2020-21 (Tracked changes for reference)
- Attachment B: Packet of Expanded GeoZones to Align with Walk Zones (for approval)
- Attachment C: Licton Springs K-8 GeoZone



# STUDENT ASSIGNMENT TRANSITION PLAN FOR 2020-21

Approved November 6, 2019

# TABLE OF CONTENTS

<b>SECTION I</b>	<b>Overview and Highlights.....</b>	<b>Page 1</b>
<b>SECTION II</b>	<b>Standard Assignments.....</b>	<b>Page 3</b>
	A. Summary	
	B. Students Entering Kindergarten	
	C. Students Entering 6 <sup>th</sup> Grade	
	D. Students Entering 9 <sup>th</sup> Grade	
	E. Students Who Move	
<b>SECTION III</b>	<b>Access to Programs and Services.....</b>	<b>Page 8</b>
	A. Special Education	
	B. English Language Learners	
	C. Advanced Learning	
	D. Montessori	
	E. International Schools with Dual Language Immersion	
	F. Programs and Services	
<b>SECTION IV</b>	<b>School Choice.....</b>	<b>Page 12</b>
	A. Open Enrollment	
	B. Tiebreakers	
	C. Waitlists	
	D. Siblings and School Choice	
<b><u>APPENDICES</u></b>	<b>.....</b>	<b>Page 15</b>
Appendix A	Attendance Areas and Feeder Patterns	
Appendix B	Geographic Zones for Option School Tiebreakers	
Appendix C	Service Schools	
Appendix D	Alternative Learning Experience Schools	

Note: For information about transportation eligibility, see the approved Transportation Service Standards.

## SECTION I: OVERVIEW AND HIGHLIGHTS

The Student Assignment Plan was approved in 2009 to provide greater predictability for families while still offering opportunities for school choice. The 2009 document continues to serve as an important reference tool, containing fundamental definitions and Plan development principles. Annual Transition Plans have guided a phased approach to implementation.<sup>1</sup>

The provisions of this Plan will prevail in the case of any conflicts with previously-approved plans, attendance area boundaries, and/or GeoZones. Unless otherwise specified, boundaries, feeder patterns, option school GeoZones, and assignment rules will remain in effect until there are changes approved by the School Board. It is anticipated that changes will be needed to address capacity management issues as district enrollment continues to grow.

School assignments are based on School Board-approved attendance area boundaries. Every student has an attendance area elementary, middle, and high school based on residence. Elementary attendance areas are combined to create middle school attendance areas, resulting in feeder patterns from elementary to middle school.

Boundary changes are anticipated in the fall of 2020 to address overcrowding at Maple Elementary School. More information regarding the planning, boundaries, services, and programs associated with these schools will be available through the district website and other forms of communication.

In most instances, the middle school attendance area is also a service area for elementary and middle school students. Various services are provided for students who live within a service area. Most specialized services for middle and high school students are provided at their attendance area school. If required special education services are not available at a student's attendance area school, the school will be linked with a nearby school with the required services.<sup>2</sup>

School Choice allows students to apply for other schools during an annual Open Enrollment period through the end of May. A student may apply for any combination of attendance area and/or option schools. The District anticipates making all waitlist moves by May 31,<sup>3</sup> pending program placement and student eligibility notification. Waitlists will be maintained until August 31 in the event that program notifications have not been completed or if there are unanticipated adjustments that need to be made after May 31. Waitlists for the 2020-21 school year will be dissolved on August 31, 2020.

This Transition Plan continues most of the assignment rules in effect during 2019-20. Some highlights and changes are:

- Changing the location of Licton Springs K-8 to the Whitman Service area and updating the Licton Springs GeoZone to extend to the west boundary of the district;
- Expansion of GeoZones for Cleveland HS, Cedar Park ES, South Shore PK-8, Hazel Wolf K-8, Orca K-8, Salmon Bay K-8, Stem K-8, Thornton Creek ES to align GeoZones with walk zones;
- Increase of the native/heritage set aside to 20% from 15% for John Stanford (JSIS) and McDonald International Schools; and
- Updating Advanced Learning (AL) assignment language and tiebreakers to reflect the fact that all schools offer AL programming and eligible students will be assigned to AL at their attendance area school.

<sup>1</sup> Assignment rules apply to resident students only. Different rules apply for non-resident students.

<sup>2</sup> There will continue to be a limited number of programs or services that are unique enough, and that serve such a limited population, that they cannot be offered in every attendance or service area area.

<sup>3</sup> The end of the waitlist period is referenced as May 31 throughout this document. No students will be added to the waitlist after May 31, but waitlists will be maintained until August 31.



## SECTION II: STANDARD ASSIGNMENTS

### A. Summary

Assignments to attendance area schools are based on residence. Students new to the district start with an assignment to their attendance area school.

After May 31, assignments for new students are to their attendance area school or to an option school with space available and without a waitlist. New students in grades 6-8 may also choose a K-8 attendance area school if they live within that school's attendance area, pending space availability.

K-12 students may transfer to their attendance area school after Open Enrollment through May 31, as long as the services the student needs are available at that school.

K-8 students who live outside of their assigned school's walk zone and are not eligible for transportation may transfer to their attendance area school at any time, as long as the services the student needs are available at that school.

### Continuing Assignments

The following students will automatically receive a continuing assignment to the same school, as long as the school offers the grade and services the student needs:

- Students who have not moved and whose current school includes their next year grade and current program
- Students at option schools will be continued at that school through the highest grade served by the school, as long as the school offers the services the student needs
- Students with a choice assignment to an attendance area school that is not the student's attendance area school
- Students at a K-8 school rising to 6<sup>th</sup> grade

### New Assignments

The following students will receive a new assignment:

- A "new student" is a student who has not attended a SPS attendance area or option school at any time during the current or previous school year. New students will be assigned to their attendance area school. Students may also apply to any school with space available during Open Enrollment through May 31. After May 31, assignments for new students are to their attendance area school or to an option school with space available and without a waitlist.
- Students who apply for and receive a choice assignment will receive a new assignment to that choice school (or program). Students with a choice assignment will be continued at that school through the highest grade served, as long as the school offers the services the student needs.
- Students whose current school does not include their next year grade or required special education services. Students will be automatically assigned to their attendance area school for the upcoming school year, except as noted for certain pathway assignments and to meet required special education services; no application is required.

- Students who have moved out of their school’s attendance area (except students grandfathered at the school); no application is required.

Grandfathered Assignments

All students enrolled with a grandfathered assignment who stay at the school are continued (grandfathered) at that school through the highest grade served by the school, as long as the school offers the services the student needs; no application is required.

**B. Students Entering Kindergarten**

Students entering kindergarten will have an initial assignment to their attendance area school, as long as the school offers the services the student needs.

- This includes students currently receiving special education developmental preschool services who will be five years old by August 31, unless their individualized education program (IEP) calls for services not available at their attendance area school.
- Students attending PreK at South Shore will be assigned to continue at South Shore for kindergarten.
- Students who meet eligibility requirements for early entrance to kindergarten are assigned to their attendance area school upon request and may apply for other schools on a space available basis through May 31.

For information on assignment of siblings to the same school, see Section IV-D (Siblings and School Choice).

**C. Students Entering 6<sup>th</sup> Grade**

New Students

New students to the district will be assigned to their attendance area middle school. Upon request, middle school students who live in the attendance area of a K-8 attendance area school may be assigned to that K-8 school, subject to space availability. Students may also apply to any school with space available during Open Enrollment through May 31. After May 31, assignments for new students are to their attendance area middle school, to a K-8 attendance area school if they live within that school’s attendance area and there is space available, or to an option school with space available and without a waitlist.

Students Currently Attending an Elementary School

Students entering 6<sup>th</sup> grade from a K-5 school will generally receive an initial assignment to their attendance area middle school, except:

- **Highly Capable Cohort (HCC):** Students enrolled as HCC receive an initial assignment to their HCC pathway middle school based on where they live. If they apply for their attendance area middle school during Open Enrollment through May 31, they will be assigned to that school (unless they apply for and are assigned to a higher ranked choice).

Students eligible, but not enrolled as HCC, are not automatically assigned to their HCC pathway school; they must apply during Open Enrollment through May 31. If they apply for HCC during Open Enrollment through May 31, they will be assigned to their HCC pathway school.

Assignment to the non-pathway school depends on space available; tiebreakers apply during Open Enrollment.

If a student becomes HC-eligible after May 31 and applies for HCC, they will be assigned to their HCC pathway school.<sup>4</sup> Assignment to the non-pathway school may be requested through May 31 and depends on space available.

- **Advanced Learners:** 5<sup>th</sup> grade students enrolled as Advanced Learners (Spectrum) will receive an initial assignment to AL at their attendance area middle school for 6<sup>th</sup> grade; no application is required.

Any Advanced Learner student may apply for another attendance area school or K-8 school during Open Enrollment through May 31; assignment is based on space available and tiebreakers.

- **International Schools:** Non-attendance area students who are eligible for continuation in a dual language immersion pathway, and who apply during Open Enrollment through May 31, will be assigned to the relevant pathway school (unless they apply for and are assigned to a higher ranked choice).<sup>5</sup>
- **Special Education:** When a student with an IEP is initially assigned to an elementary school that is not the attendance area school, because that student's IEP requires services that are not available at the student's attendance area school, the student may choose to attend the attendance area middle school or middle school in that elementary school's feeder pattern.

Students with an IEP who receive an assignment through the school choice process at an elementary school outside of their middle school feeder pattern will need to go through the school choice process to attend a middle school outside of their assigned middle school based on their address. In some instances, some of students may require individual middle school assignments based on their needs as identified through the IEP Team Process.

Students entering 6<sup>th</sup> grade from a K-5 school may also apply for middle school enrollment at a K-8 school even if they have not attended the school previously. This applies to both attendance area K-8 schools (Catharine Blaine K-8 and Broadview Thomson K-8) and option schools. Students may apply for assignment at a K-8 school during Open Enrollment and assignment depends on space available. As a result of the opening of Magnolia Elementary School in fall 2019, Catharine Blaine K-8 will have more space available for middle school enrollment for families living outside of the attendance area.

Students may also apply for any school during Open Enrollment through May 31, including K-8, attendance area, and option schools. Assignment depends on space available; tiebreakers apply during Open Enrollment.

<sup>4</sup> This occurs when a student is new to the district after the testing deadline has passed, enrolls from another public school district, and can document comparable eligibility and participation in that district's similar program for gifted students. Eligibility is determined by the Advanced Learning department.

<sup>5</sup> One of the choices listed must be for the pathway school without designation of Advanced Learner (or HCC if applicable).



### Students Currently Attending a K-8 School

Students entering 6<sup>th</sup> grade and attending K-8 schools will be assigned to continue at their current K-8 school for 6<sup>th</sup> grade, as long as the school offers the services the student needs.<sup>6</sup>

- If they apply for their attendance area middle school during Open Enrollment through May 31, they will be assigned to their attendance area school, as long as the school offers the services the student needs (unless they apply for and are assigned to a higher ranked choice).

Students may apply for any school with space available during or after Open Enrollment through May 31.

- **HC:** Students eligible, but not enrolled as HCC, are not automatically assigned to their HCC pathway school. If they apply for HCC during Open Enrollment through May 31, they will be assigned to their HCC pathway school. Assignment to the non-pathway school depends on space available; tiebreakers apply during Open Enrollment.

If a student becomes HC-eligible after May 31 and applies for HCC, they will be assigned to their HCC pathway school.<sup>7</sup> Assignment to the non-pathway school may be requested through May 31 and depends on space available.

Students may also apply for any school during Open Enrollment through May 31, including K-8, attendance area, and option schools. Assignment depends on space available; tiebreakers apply during Open Enrollment.

#### **D. Students Entering 9th Grade**

Current and new students will generally be assigned to their attendance area high school, as long as the school offers the services the student needs. Students may also apply to any school during Open Enrollment through May 31. After May 31, assignments for new students are to their attendance area school or to an option school with space available and without a waitlist.

- **HC:** Beginning in the 2019-20 school year, students enrolled in HC in 8<sup>th</sup> grade will receive an initial assignment to their pathway school for HC services.

Students eligible, but not enrolled as HC, will receive an initial assignment to their attendance area high school. These students may also apply during Open Enrollment to attend their pathway high school and will receive placement at this site. These students may also apply during the Open Enrollment process for the IBX program at Ingraham. Assignment depends on space available; tiebreakers apply during Open Enrollment.

If they apply for their attendance area high school during Open Enrollment through May 31, they will be assigned to their attendance area school (unless they apply for and are assigned to a higher ranked choice).

<sup>6</sup> Students enrolled as an Advanced Learner at their K-8 school will be continued without having to reapply.

<sup>7</sup> This occurs when a student is new to the district after the testing deadline has passed, enrolls from another public school district, and can document comparable eligibility and participation in that district's similar program for gifted students.

- **IBX:** Students may also apply for the IBX program at Ingraham; assignment to Ingraham depends on space available and tiebreakers. If not assigned to IBX at Ingraham, they retain a seat at their pathway school (unless they apply for and are assigned to a higher ranked choice.) Assignment depends on space available; tiebreakers apply during Open Enrollment.
- **International Schools:** Non-attendance area students who are eligible for continuation in a dual language immersion pathway and who apply during Open Enrollment through May 31 will be assigned to the relevant pathway school (unless they apply for and are assigned to a higher ranked choice).
- **Special Education:** When a student with an IEP is initially assigned to an elementary and middle school that is not the attendance area school, the student may choose to attend the attendance area high school or high school in that elementary and middle school's feeder pattern.

Students with an IEP who receive an assignment through the school choice process at an elementary or middle school outside of their feeder pattern will need to go through the school choice process to attend a high school outside of their assigned high school based on their address. In some instances, some of these students may require individual high school assignments based on their needs as identified through the IEP Team Process.

Students may also apply to any school with space available during or after Open Enrollment through May 31. After May 31, assignments for new students are to their attendance area school or to an option school with space available and without a waitlist.

#### **E. Students Who Move**

When students move, they may have the option of or be required to get a new school assignment, depending on when and where they move.

In general, students **must** change to their new attendance area schools if they are assigned to their attendance area school, are not grandfathered, and they move to a new attendance area. If they move before the school year starts, they **must** change schools for the new school year. If they move during the school year, they **may** finish the year at their current school, but they **must** change schools the next year.

In all cases, reassignments are subject to any special education services a student may require.

Detailed move rules are available in the Superintendent's Procedures for Student Assignment.<sup>8</sup>

<sup>8</sup> Available on the district website: <http://www.seattleschools.org/admissions>

## SECTION III: ACCESS TO PROGRAMS AND SERVICES

Seattle Public Schools offers a variety of programs and services to meet a range of student needs, including English Language Learners (ELL), students eligible for special education services, students who are homeless, and students eligible for advanced learning. Many students are assigned to their attendance area school regardless of most service needs. For required special education services not available at every attendance area school, a linked school is designated. This provides predictable assignments for students who need these services.

Schools and services are also available for students who have various behavioral, attendance, or academic challenges as well as for students who self-select into certain unique programs. Students are assigned to these schools or programs individually based on specific needs and circumstances, not through the standard assignment process.

### A. Special Education

The Individuals with Disabilities in Education Act (IDEA) requires the district to ensure that “a continuum of alternative placements is available to meet the needs of children with disabilities for special education and related services.” IDEA does not require the full continuum of placement be available at each school in the district. If a student’s IEP requires services that are not available at the student’s attendance area school, the student may be assigned to another school that can offer the services that are included in the IEP and necessary for the student to receive a free, appropriate public education. Per the Washington Administrative Code (WAC), “Unless the IEP of a student with a disability requires some other arrangement, the student shall be educated in the school that he or she would attend if nondisabled. In the event the student needs other arrangements, placement shall be as close as possible to the student’s home.” Special Education Services are provided in a continuum throughout the district.

Resource level special education services are available at every school and follow the general education student assignment process. Students who are eligible for other special education continuum services (Access, Focus, Social/Emotional, SM2, Distinct) are assigned to their attendance area or linked school, and may also apply for assignment to another school that offers those services through School Choice. Linked schools for Special Education services are posted online prior to Open Enrollment, along with linked schools for other programs and services, and provide assignment predictability.<sup>9</sup> For Option Schools, there will be designated seats available for students who are eligible for intensive special education services (Access, Focus, Social/Emotional, SM2, Distinct). When requesting an Option School students will be assigned through the School Choice Process during Open Enrollment.

A very small number of students with exceptional circumstances may require individual assignments based on their IEP. Please refer to the Special Education Change of School Procedure Guide for further information.

Standard assignment rules and tiebreakers apply.

Students who receive centralized special education service assignments to meet their specific IEP driven needs (DHH, Vision, Medically Fragile) are assigned individually based on student needs, and may also apply for assignment to another school offering the same services through School Choice.

These assignments are in alignment with approved boundaries and feeder patterns, to the extent possible, depending on capacity, proximity, and individual service needs. Assignments are made

<sup>9</sup> If warranted by student needs, intensive special education services may be added at other locations and times.

individually to ensure that each student’s IEP requirements can be met and that the appropriate services are available at the assigned school. Transportation for students with disabilities is based on individual IEP service needs.

### **B. English Language Learners**

Most students who need ELL services are assigned to their attendance area school. Students who need ELL services may also apply for other schools through School Choice. Bilingual Orientation Center services are available for newcomers.

### **C. Advanced Learning<sup>10</sup>**

There are several services and programs to meet the needs of advanced learners. Some students may be served at their attendance area school; others will follow pathways with their peers.

#### Highly Capable Cohort (HCC)

HCC assignment pathways are based on where students live, not where they attend school. (See Appendix A for attendance areas and feeder patterns.)

- HCC students entering grades 1-8, who apply during Open Enrollment through May 31, will be assigned consistent with the approved HCC pathways, based on where they live.
- Students entering grades 1-8 who become HC-eligible after Open Enrollment will be assigned consistent with the HCC pathways, based on where they live.
- Students entering 6<sup>th</sup> grade will be assigned to a middle school consistent with the approved HCC pathways, based on where they live.
- Assignment to the non-pathway school may be requested during Open Enrollment through May 31 and depends on space available.
- All 9<sup>th</sup> graders will be assigned to their pathway high school and may apply for the HC/IBX program at Ingraham.

If students enrolled in HCC apply for their attendance area school during Open Enrollment through May 31, they will be assigned to their attendance area school.

#### HC/IBX Program at Ingraham High School

A second advanced learning option for high school students who are HC-eligible is offered at Ingraham. Qualified HC students will generally take core classes together and then enroll in International Baccalaureate classes beginning in 10<sup>th</sup> grade – a year earlier than usual. An accelerated curriculum leads to an early IB diploma, allowing seniors to complete internships, college classes, and further electives.

#### Advanced Learning Opportunities (ALO)

Students in grades 1-8 who are AL or HC eligible and enroll at their attendance area school will receive ALO services at their attendance area school. Eligibility for HC or AL services will be maintained as long as the student is continuously enrolled in Seattle Public Schools.

#### Advanced Learners (AL)

Advanced Learning (Spectrum) is offered for elementary and middle school students identified through district testing. For elementary grade students, AL is offered at each school site. Every attendance area

<sup>10</sup> See additional information in Sections II-C and II-D.

middle school also offers AL. Newly-eligible elementary students must apply for AL during Open Enrollment through May 31. Assignment to AL in grades 1-5 depends on space available; tiebreakers apply during Open Enrollment.

AL eligible students in grades 6-8 are guaranteed services to the AL program at their attendance area middle school. Advanced Learners in 5<sup>th</sup> grade at elementary schools will be automatically assigned to 6<sup>th</sup> grade AL at their attendance area middle school. Students newly eligible for advanced learning who are already assigned to their attendance area middle school will be automatically assigned to AL at that school. Advanced Learning students who are already assigned to their attendance area middle school (but are not assigned to AL) who are entering 7<sup>th</sup> or 8<sup>th</sup> grade will also be automatically assigned to AL at that school.<sup>11</sup> Advanced Learning students who are not already assigned to their attendance area middle school will be assigned to AL at their attendance area middle school upon request, if they apply during Open Enrollment through May 31. Students who are AL-eligible may also apply for an AL program at any other school through School Choice, during Open Enrollment through May 31; assignment depends on space available; tiebreakers apply during Open Enrollment. After waitlists have been dissolved, program changes within the same school will be at principal discretion.

#### **D. Montessori**

The Montessori program is offered at Daniel Bagley Elementary School. Students, including those who live in a school's attendance area, must apply for Montessori. Students who live in other attendance areas may also apply through the regular School Choice process. Assignment depends on space available; tiebreakers apply during Open Enrollment. After waitlists have been dissolved, program changes within the same school will be at principal discretion. Leschi offers a blended (contemporary and Montessori) program to all students.

#### **E. International Schools with Dual Language Immersion**

There are feeder pathways for dual language immersion students at international schools. Dual language immersion pathways are implemented as each cohort of students is ready to move to the next level. Assignment pathways are based on where students attend school (not where they live):

John Stanford & McDonald > Hamilton > Lincoln  
Beacon Hill & Dearborn Park > Mercer > Rainier Beach  
Concord > Denny > Chief Sealth

Assignment is guaranteed for non-attendance area dual language immersion students who apply for their pathway school during Open Enrollment; after Open Enrollment, assignment is based on seat availability.<sup>12</sup>

#### **F. Programs and Services**

Information about locations of programs and services that could impact family choices will be available to families prior to the Open Enrollment period. Decisions will also be reflected in the designation of linked attendance area schools and will specify the services or program(s) for which the schools are linked.<sup>13</sup> Information is also provided in quarterly reports to the Board, available online. (See School Board Policy # 2200 for additional information.)

<sup>11</sup> Unless the student is already assigned to a program other than General Education, such as HCC

<sup>12</sup> One of the choices listed must be for the pathway school without designation of AL (or HCC, if applicable).

<sup>13</sup> Changes not connected to the Open Enrollment process are adjusted as needed. If warranted by student needs, intensive special education services may be added at other locations and times.

Service schools provide specific services or unique academic programs that are not offered at attendance area or option schools (See Appendix C).

## SECTION IV: SCHOOL CHOICE

### A. Open Enrollment

School Choice allows students to apply for any school(s) beginning during the Open Enrollment period through the end of May. A student may apply for any combination of attendance area schools and/or option schools. Students who apply for and receive a choice assignment will receive a new assignment to that choice school (or program). Students with a choice assignment will be continued at that school through the highest grade served, as long as the school offers the services the student needs. Open Enrollment applications will be processed as follows:

- All first choices will be processed first, then second choices next, etc.
- If more students apply than can be assigned, the approved tiebreakers are used.
- Waitlists established during Open Enrollment processing are based on the same processing sequence and tiebreakers used when making assignments.
- Each student may have one assignment and, if desired, be on one waitlist. Waitlists stay active through May 31 and will be dissolved on August 31, after which there are no further waitlist moves for the school year. <sup>14</sup>
- If a student submits an application and gets assigned to the first choice school, the previous assignment is dropped and the student is not on any waitlist.
- If a student submits an application and gets assigned to one of the choices other than the first choice, the previous assignment is dropped and the student is put on the waitlist for the first choice.
- If a student submits an application and doesn't get assigned to any of the choices, the previous assignment is still in place, and the student is put on the waitlist for the first choice.

After Open Enrollment through May 31, students will be assigned to available choice seats on a first-come, first-served basis. After May 31, assignments for new students are to their attendance area school, or to an option school with space available and without a waitlist.

### B. Tiebreakers

If more students apply for a school during Open Enrollment than can be assigned, tiebreakers determine assignment and waitlist status.

<b>STANDARD TIEBREAKERS</b>			<b>Option Schools</b> (all grades)
for available seats after assignment of attendance area students			
Attendance Area Elementary / K-8 Schools	Attendance Area Middle Schools	Attendance Area High Schools	
1. Sibling 2. Lottery	1. Sibling 2. Feeder School 3. Lottery	1. Sibling 2. Lottery	1. Sibling 2. GeoZone 3. Lottery

<sup>14</sup> The District anticipates making all waitlist moves by May 31. No students will be added to the waitlist after May 31, but waitlists will be maintained until August 31.

Montessori Tiebreakers
Elementary Schools
1. Attendance Area 2. Sibling 3. Lottery

HCC Tiebreakers (formerly APP)		
Elementary Schools	Middle Schools	High Schools
1. Sibling 2. Lottery	1. Sibling 2. Feeder School 3. Lottery	1. Sibling 2. Lottery

**C. Waitlists**

Waitlists established during Open Enrollment processing are based on the same processing sequence and tiebreakers used when making assignments.

After Open Enrollment assignments are made and waitlists are established:

- Students may be added to the end of any waitlist through May 31, but no student may be on more than one waitlist at a time.
- Waitlists stay active through May 31.<sup>15</sup>
- If there are multiple students added to the same school/grade/program waitlist on the same day, those students only will be sequenced by lottery. (They will not move ahead of students already on the waitlist from Open Enrollment or from a previous day.)
- If a school does not have a waitlist, assignments for space available are first come, first served through May 31.

**D. Siblings and School Choice**

SPS provides a variety of options for families who would like to have siblings assigned to the same school. Some options are guaranteed and some are not. A student’s designated school is their attendance area school, or a linked school to which the student is assigned because the attendance area school does not have the required special education or ELL services the student needs.

1. New students who are siblings in the same grade span will start out assigned together at their designated school:
  - If siblings have different designated schools due to different service needs, the sibling without required special education or ELL service needs can be assigned to the other sibling’s school upon request until May 31 (or at the time of enrollment, if later).

<sup>15</sup> The District anticipates making all waitlist moves by May 31. No students will be added to the waitlist after May 31, but waitlists will be maintained until August 31.



2. Siblings in the same grade span who are assigned to different schools:
  - All siblings receive a tiebreaker priority during Open Enrollment when applying for a school which another sibling currently attends and will attend the following year.
  - After Open Enrollment through May 31, any student will be assigned to their attendance area school upon request. If siblings have different designated schools due to different service needs, the sibling(s) without required special education or ELL service needs can be assigned to the other sibling's school upon request until May 31.
3. Siblings who are already assigned together, but who apply for reassignment together to one or more schools for the following school year:
  - If the siblings apply for the same schools in the same order during Open Enrollment, the applications will be processed using the "keep siblings together" rule: If all siblings cannot be assigned together to one of the schools listed, they will keep their original school assignments and all will be waitlisted for the first choice school. (No siblings are reassigned unless all siblings can be reassigned to the same school.)
  - Siblings may apply for different programs at the same school (e.g. one of the siblings applies for montessori at a school, while the other does not apply for any special program), as long as they apply for the same schools in the same order.
4. Twins<sup>16</sup> who apply for assignment together to one or more schools:
  - If they apply for the same schools in the same order during Open Enrollment, the resulting school and program assignment of the student with the highest SPS student ID number will determine the assignment of the twin, as long as that school provides all required services for both students.
  - They may apply for different programs at the same school (e.g. one of the siblings applies for the montessori program at a school while the other does not apply for any special program) as long as they apply for the same schools in the same order. A twin who is not eligible for the assigned program of the sibling with the highest student ID number will be assigned to the General Education program at the same school (or the appropriate Special Education program, if applicable).
  - If the siblings are waitlisted for the same school and program during Open Enrollment, the twin with the lower student ID number will be placed on that waitlist immediately after the twin with the highest ID number.

<sup>16</sup> This includes triplets and other multiples, as well as siblings in the same grade.

## APPENDIX A

### Attendance Areas and Feeder Patterns

#### HIGH SCHOOLS

Attendance Area High Schools: Ballard, Franklin, Garfield, Nathan Hale, Ingraham, Rainier Beach, Roosevelt, Chief Sealth, West Seattle

Option High Schools: The Center School, Cleveland STEM

#### ELEMENTARY AND MIDDLE SCHOOLS

Attendance Area Middle Schools: Aki Kurose, Denny, Eagle Staff, Eckstein, Hamilton, Jane Addams, Madison, Meany, McClure, Mercer, Washington, Whitman

Each middle school attendance area has a group of elementary schools that feed into the middle school.

<b>MIDDLE SCHOOLS</b>	<b>ELEMENTARY FEEDER SCHOOLS (Including K-8 Attendance Area Schools)</b>	<b>OPTION SCHOOLS<sup>17</sup></b>	<b>HCC PATHWAYS<sup>18</sup></b>
Aki Kurose	Dunlap, Emerson, Graham Hill, Martin Luther King Jr., Rainier View, Wing Luke	South Shore PK-8	Thurgood Marshall Washington Garfield
Denny	Arbor Heights, Concord, Highland Park, Roxhill, Sanislo, West Seattle ES	STEM K-8	Thurgood Marshall Madison West Seattle
Eagle Staff	Broadview-Thomson (K-8), Daniel Bagley, Greenwood, Northgate, Viewlands*		Cascadia Eagle Staff Lincoln
Eckstein	Bryant, Green Lake*, Laurelhurst, Sand Point, View Ridge, Wedgwood	Thornton Creek	Decatur <sup>19</sup> Jane Addams  Lincoln
Hamilton	B. F. Day, Green Lake*, West Woodland	John Stanford McDonald	Cascadia Hamilton Lincoln
Jane Addams	John Rogers, Olympic Hills, Olympic View, Sacajawea,	Cedar Park Hazel Wolf K-8	Cascadia Jane Addams Lincoln
Madison	Alki, Fairmount Park, Gatewood, Genesee Hill, Lafayette	Pathfinder K-8	Thurgood Marshall Madison West Seattle
Meany	Leschi, Lowell, Madrona, McGilvra, Montlake, Stevens	TOPS K-8	Thurgood Marshall Washington Garfield
McClure	Catharine Blaine (K-8), Coe, John Hay, Lawton, Magnolia	Queen Anne	Cascadia Hamilton Lincoln
Mercer	Beacon Hill, Dearborn Park, Hawthorne, Kimball, Maple, Rising Star	Orca K-8	Thurgood Marshall Washington Garfield
Washington	Bailey Gatzert, John Muir, Thurgood Marshall		Thurgood Marshall Washington Garfield
Whitman	Adams, Loyal Heights, North Beach, Viewlands*, Whittier	Salmon Bay K-8 Licton Springs K-8	Cascadia Eagle Staff Lincoln

\*Elementary schools with an asterisk feed into multiple middle schools. Assignment to attendance area middle schools is based on student address.

<sup>17</sup> Option schools are located in proximity to attendance area schools. Living within an option school's GeoZone is not a guarantee of assignment.

<sup>18</sup> Ingraham also offers the advanced HC/IBX program, but is not an HC pathway high school.

<sup>19</sup> HCC students living in the Green Lake attendance area will be assigned to Cascadia for HCC.

## APPENDIX B

### **Geographic Zones for Option School Tiebreakers**

The tiebreakers for option schools are:

1. Sibling
2. Geographic Zone (GeoZone)
3. Lottery

GeoZones give tiebreaker priority for students who live near the school and serve as a tool for capacity management. In some cases, they can also be used to improve diversity. GeoZones are not a guarantee of assignment to the requested option school, and are likely to change periodically.

Maps of GeoZones are available on the School Directory page of the [www.seattleschools.org](http://www.seattleschools.org) website.

#### High School Option Schools

- Center School
- Cleveland STEM

#### K-8 Option Schools

- Hazel Wolf
- Licton Springs
- Orca
- Pathfinder
- Salmon Bay
- South Shore PK-8
- STEM K-8
- TOPS

#### K-5 Option Schools

- Cedar Park
- John Stanford
- McDonald
- Queen Anne
- Thornton Creek

## **APPENDIX C**

### **Service Schools**

Students are usually placed in a service school based on individual assessment. Assignments to service schools are choice assignments except for the Secondary Bilingual Orientation Center (SBOC), which is a designated assignment. Additional information is available in the Superintendent's Procedures for Student Assignment<sup>20</sup>.

#### **Service Schools:**

- Head Start
- Education Admission Centers
- Special Education Consortium (Children's Home Society, McGraw Center, Ryther Center, Experimental Education Unit, Birth to 3 Contracts, Private School Services, and other non-SPS services)

<sup>20</sup> Available online at [www.seattleschools.org/admissions](http://www.seattleschools.org/admissions)

## **APPENDIX D**

### **Option Schools with Continuous Enrollment**

Option schools with continuous enrollment offer unique services, opportunities, and learning environments to meet individual student needs. Students may request assignment to these schools or may be referred to one. These schools do not have geozones. Families are welcome to apply to these schools during Open Enrollment and throughout the school year.

Option schools with continuous enrollment:

- Cascade Parent Partnership Program
- Interagency Programs
- Middle College High School
- Nova
- South Lake
- Skills Center
- Seattle World School



STUDENT ASSIGNMENT  
TRANSITION PLAN FOR ~~2019~~2020-  
2021

Approved ~~January 23~~November 6, 2019

# TABLE OF CONTENTS

<b>SECTION I</b>	<b>Overview and Highlights.....</b>	<b>Page 1</b>
<b>SECTION II</b>	<b>Standard Assignments.....</b>	<b>Page 3</b>
	A. Summary	
	B. Students Entering Kindergarten	
	C. Students Entering 6 <sup>th</sup> Grade	
	D. Students Entering 9 <sup>th</sup> Grade	
	E. Students Who Move	
<b>SECTION III</b>	<b>Access to Programs and Services.....</b>	<b>Page 8</b>
	A. Special Education	
	B. English Language Learners	
	C. Advanced Learning	
	D. Montessori	
	E. International Schools with Dual Language Immersion	
	F. Programs and Services	
<b>SECTION IV</b>	<b>School Choice.....</b>	<b>Page 12</b>
	A. Open Enrollment	
	B. Tiebreakers	
	C. Waitlists	
	D. Siblings and School Choice	
<b><u>APPENDICES</u></b>	<b>.....</b>	<b>Page 15</b>
Appendix A	Attendance Areas and Feeder Patterns	
Appendix B	Geographic Zones for Option School Tiebreakers	
Appendix C	Service Schools	
Appendix D	Alternative Learning Experience Schools	

Note: For information about transportation eligibility, see the approved Transportation Service Standards.

## SECTION I: OVERVIEW AND HIGHLIGHTS

The Student Assignment Plan was approved in 2009 to provide greater predictability for families while still offering opportunities for school choice. The 2009 document continues to serve as an important reference tool, containing fundamental definitions and Plan development principles. Annual Transition Plans have guided a phased approach to implementation.<sup>1</sup>

The provisions of this Plan will prevail in the case of any conflicts with previously-approved plans, attendance area boundaries, and/or GeoZones. Unless otherwise specified, boundaries, feeder patterns, option school GeoZones, and assignment rules will remain in effect until there are changes approved by the School Board. It is anticipated that changes will be needed to address capacity management issues as district enrollment continues to grow.

School assignments are based on School Board-approved attendance area boundaries. Every student has an attendance area elementary, middle, and high school based on residence. Elementary attendance areas are combined to create middle school attendance areas, resulting in feeder patterns from elementary to middle school.

Boundary changes are anticipated in the fall of ~~2019-2020~~ when Lincoln High School opens as an attendance area high school in Northwest Seattle and Magnolia Elementary School opens in Magnolia to address overcrowding at Maple Elementary School. More information regarding the planning, boundaries, services, and programs associated with these schools will be available through the district website and other forms of communication.

In most instances, the middle school attendance area is also a service area for elementary and middle school students. Various services are provided for students who live within a service area. Most specialized services for middle and high school students are provided at their attendance area school. If required special education services are not available at a student's attendance area school, the school will be linked with a nearby school with the required services.<sup>2</sup>

School Choice allows students to apply for other schools during an annual Open Enrollment period through the end of May. A student may apply for any combination of attendance area and/or option schools. The District anticipates making all waitlist moves by May 31,<sup>3</sup> pending program placement and student eligibility notification. Waitlists will be maintained until August 31 in the event that program notifications have not been completed or if there are unanticipated adjustments that need to be made after May 31. Waitlists for the ~~2019~~2020-201 school year will be dissolved on August 31, ~~2019~~2020.

This Transition Plan continues most of the assignment rules in effect during ~~2018~~2019-1920. Some highlights and changes are:

- Changing the location of Licton Springs K-8 to the Whitman Service area and updating the Licton Springs GeoZone to extend to the west boundary of the district;
- Expansion of GeoZones for Cleveland HS, Cedar Park ES, South Shore PK-8, Hazel Wolf K-8, Orca K-8, Salmon Bay K-8, Stem K-8, Thornton Creek ES to align GeoZones with walk zones;
- Increase of the native/heritage set aside to 20% from 15% for John Stanford (JSIS) and McDonald International Schools; and

---

<sup>1</sup> Assignment rules apply to resident students only. Different rules apply for non-resident students.

<sup>2</sup> There will continue to be a limited number of programs or services that are unique enough, and that serve such a limited population, that they cannot be offered in every attendance or service area area.

<sup>3</sup> The end of the waitlist period is referenced as May 31 throughout this document. No students will be added to the waitlist after May 31, but waitlists will be maintained until August 31.



- Updating Advanced Learning (AL) assignment language and tiebreakers to reflect the fact that all schools offer AL programming and eligible students will be assigned to AL at their attendance area school.

~~Changing name of “Service Schools” to “Option Schools with Continuous Enrollment”;~~

~~Updating international/dual language immersion pathway to include the addition of a southeast high school pathway at Rainier Beach and north end school pathway at Lincoln;~~

~~Grade level adjustment for Middle College from 11-12 to 9-12 beginning in the 2019-20 school year;~~

~~Transitioning Graham Hill to a school with one program for all students;~~

~~Updating language to clarify current Special Education services and placement;~~

~~Removal of Fred Hutchinson Cancer Research Institute School from list of Service Schools; and~~

~~Updating language to clarify that students entering 6th grade from a K-5 school may also apply for middle school enrollment at a K-8 during Open Enrollment.~~



## SECTION II: STANDARD ASSIGNMENTS

### A. Summary

Assignments to attendance area schools are based on residence. Students new to the district start with an assignment to their attendance area school.

After May 31, assignments for new students are to their attendance area school or to an option school with space available and without a waitlist. New students in grades 6-8 may also choose a K-8 attendance area school if they live within that school's attendance area, pending space availability.

K-12 students may transfer to their attendance area school after Open Enrollment through May 31, as long as the services the student needs are available at that school.

K-8 students who live outside of their assigned school's walk zone and are not eligible for transportation may transfer to their attendance area school at any time, as long as the services the student needs are available at that school.

### Continuing Assignments

The following students will automatically receive a continuing assignment to the same school, as long as the school offers the grade and services the student needs:

- Students who have not moved and whose current school includes their next year grade and current program
- Students at option schools will be continued at that school through the highest grade served by the school, as long as the school offers the services the student needs
- Students with a choice assignment to an attendance area school that is not the student's attendance area school
- Students at a K-8 school rising to 6<sup>th</sup> grade

### New Assignments

The following students will receive a new assignment:

- A "new student" is a student who has not attended a SPS attendance area or option school at any time during the current or previous school year. New students will be assigned to their attendance area school. Students may also apply to any school with space available during Open Enrollment through May 31. After May 31, assignments for new students are to their attendance area school or to an option school with space available and without a waitlist.
- Students who apply for and receive a choice assignment will receive a new assignment to that choice school (or program). Students with a choice assignment will be continued at that school through the highest grade served, as long as the school offers the services the student needs.
- Students whose current school does not include their next year grade or required special education services. Students will be automatically assigned to their attendance area school for the upcoming school year, except as noted for certain pathway assignments and to meet required special education services; no application is required.

- Students who have moved out of their school’s attendance area (except students grandfathered at the school); no application is required.

Grandfathered Assignments

All students enrolled with a grandfathered assignment who stay at the school are continued (grandfathered) at that school through the highest grade served by the school, as long as the school offers the services the student needs; no application is required.

**B. Students Entering Kindergarten**

Students entering kindergarten will have an initial assignment to their attendance area school, as long as the school offers the services the student needs.

- This includes students currently receiving special education developmental preschool services who will be five years old by August 31, unless their individualized education program (IEP) calls for services not available at their attendance area school.
- Students attending PreK at South Shore will be assigned to continue at South Shore for kindergarten.
- Students who meet eligibility requirements for early entrance to kindergarten are assigned to their attendance area school upon request and may apply for other schools on a space available basis through May 31.

For information on assignment of siblings to the same school, see Section IV-D (Siblings and School Choice).

**C. Students Entering 6<sup>th</sup> Grade**

New Students

New students to the district will be assigned to their attendance area middle school. Upon request, middle school students who live in the attendance area of a K-8 attendance area school may be assigned to that K-8 school, subject to space availability. Students may also apply to any school with space available during Open Enrollment through May 31. After May 31, assignments for new students are to their attendance area middle school, to a K-8 attendance area school if they live within that school’s attendance area and there is space available, or to an option school with space available and without a waitlist.

Students Currently Attending an Elementary School

Students entering 6<sup>th</sup> grade from a K-5 school will generally receive an initial assignment to their attendance area middle school, except:

- **Highly Capable Cohort (HCC):** Students enrolled as HCC receive an initial assignment to their HCC pathway middle school based on where they live. If they apply for their attendance area middle school during Open Enrollment through May 31, they will be assigned to that school (unless they apply for and are assigned to a higher ranked choice).

Students eligible, but not enrolled as HCC, are not automatically assigned to their HCC pathway school; they must apply during Open Enrollment through May 31. If they apply for HCC during Open Enrollment through May 31, they will be assigned to their HCC pathway school.

Assignment to the non-pathway school depends on space available; tiebreakers apply during Open Enrollment.

If a student becomes HC-eligible after May 31 and applies for HCC, they will be assigned to their HCC pathway school.<sup>4</sup> Assignment to the non-pathway school may be requested through May 31 and depends on space available.

- **Advanced Learners:** 5<sup>th</sup> grade students enrolled as Advanced Learners (Spectrum) will receive an initial assignment to AL at their attendance area middle school for 6<sup>th</sup> grade; no application is required.

Any Advanced Learner student may apply for another attendance area school or K-8 school during Open Enrollment through May 31; assignment is based on space available and tiebreakers.

- **International Schools:** Non-attendance area students who are eligible for continuation in a dual language immersion pathway, and who apply during Open Enrollment through May 31, will be assigned to the relevant pathway school (unless they apply for and are assigned to a higher ranked choice).<sup>5</sup>
- **Special Education:** When a student with an IEP is initially assigned to an elementary school that is not the attendance area school, because that student's IEP requires services that are not available at the student's attendance area school, the student may choose to attend the attendance area middle school or middle school in that elementary school's feeder pattern.

Students with an IEP who receive an assignment through the school choice process at an elementary school outside of their middle school feeder pattern will need to go through the school choice process to attend a middle school outside of their assigned middle school based on their address. In some instances, some of students may require individual middle school assignments based on their needs as identified through the IEP Team Process.

Students entering 6<sup>th</sup> grade from a K-5 school may also apply for middle school enrollment at a K-8 school even if they have not attended the school previously. This applies to both attendance area K-8 schools (Catharine Blaine K-8 and Broadview Thomson K-8) and option schools. Students may apply for assignment at a K-8 school during Open Enrollment and assignment depends on space available. As a result of the opening of Magnolia Elementary School in fall 2019, Catharine Blaine K-8 will have more space available for middle school enrollment for families living outside of the attendance area.

Students may also apply for any school during Open Enrollment through May 31, including K-8, attendance area, and option schools. Assignment depends on space available; tiebreakers apply during Open Enrollment.

---

<sup>4</sup> This occurs when a student is new to the district after the testing deadline has passed, enrolls from another public school district, and can document comparable eligibility and participation in that district's similar program for gifted students. Eligibility is determined by the Advanced Learning department.

<sup>5</sup> One of the choices listed must be for the pathway school without designation of Advanced Learner (or HCC if applicable).

### Students Currently Attending a K-8 School

Students entering 6<sup>th</sup> grade and attending K-8 schools will be assigned to continue at their current K-8 school for 6<sup>th</sup> grade, as long as the school offers the services the student needs.<sup>6</sup>

- If they apply for their attendance area middle school during Open Enrollment through May 31, they will be assigned to their attendance area school, as long as the school offers the services the student needs (unless they apply for and are assigned to a higher ranked choice).

Students may apply for any school with space available during or after Open Enrollment through May 31.

- **HC:** Students eligible, but not enrolled as HCC, are not automatically assigned to their HCC pathway school. If they apply for HCC during Open Enrollment through May 31, they will be assigned to their HCC pathway school. Assignment to the non-pathway school depends on space available; tiebreakers apply during Open Enrollment.

If a student becomes HC-eligible after May 31 and applies for HCC, they will be assigned to their HCC pathway school.<sup>7</sup> Assignment to the non-pathway school may be requested through May 31 and depends on space available.

- ~~**Advanced Learners:** Advanced Learners (Spectrum) who apply for their attendance area school by May 31 will be assigned to AL at that school, as long as the school offers the services the student needs (unless they apply for and are assigned to a higher ranked choice).~~

Students may also apply for any school during Open Enrollment through May 31, including K-8, attendance area, and option schools. Assignment depends on space available; tiebreakers apply during Open Enrollment.

#### **D. Students Entering 9th Grade**

Current and new students will generally be assigned to their attendance area high school, as long as the school offers the services the student needs. Students may also apply to any school during Open Enrollment through May 31. After May 31, assignments for new students are to their attendance area school or to an option school with space available and without a waitlist.

- **HC:** Beginning in the 2019-20 school year, students enrolled in HC in 8<sup>th</sup> grade will receive an initial assignment to their pathway school for HC services.

Students eligible, but not enrolled as HC, will receive an initial assignment to their attendance area high school. These students may also apply during Open Enrollment to attend their pathway high school and will receive placement at this site. These students may also apply during the Open Enrollment process for the IBX program at Ingraham. Assignment depends on space available; tiebreakers apply during Open Enrollment.

---

<sup>6</sup> Students enrolled as an Advanced Learner at their K-8 school will be continued without having to reapply.

<sup>7</sup> This occurs when a student is new to the district after the testing deadline has passed, enrolls from another public school district, and can document comparable eligibility and participation in that district's similar program for gifted students.

If they apply for their attendance area high school during Open Enrollment through May 31, they will be assigned to their attendance area school (unless they apply for and are assigned to a higher ranked choice).

- **IBX:** Students may also apply for the IBX program at Ingraham; assignment to Ingraham depends on space available and tiebreakers. If not assigned to IBX at Ingraham, they retain a seat at their pathway school (unless they apply for and are assigned to a higher ranked choice.) Assignment depends on space available; tiebreakers apply during Open Enrollment.
- **International Schools:** Non-attendance area students who are eligible for continuation in a dual language immersion pathway and who apply during Open Enrollment through May 31 will be assigned to the relevant pathway school (unless they apply for and are assigned to a higher ranked choice).
- **Special Education:** When a student with an IEP is initially assigned to an elementary and middle school that is not the attendance area school, the student may choose to attend the attendance area high school or high school in that elementary and middle school's feeder pattern.

Students with an IEP who receive an assignment through the school choice process at an elementary or middle school outside of their feeder pattern will need to go through the school choice process to attend a high school outside of their assigned high school based on their address. In some instances, some of these students may require individual high school assignments based on their needs as identified through the IEP Team Process.

Students may also apply to any school with space available during or after Open Enrollment through May 31. After May 31, assignments for new students are to their attendance area school or to an option school with space available and without a waitlist.

#### **E. Students Who Move**

When students move, they may have the option of or be required to get a new school assignment, depending on when and where they move.

In general, students **must** change to their new attendance area schools if they are assigned to their attendance area school, are not grandfathered, and they move to a new attendance area. If they move before the school year starts, they **must** change schools for the new school year. If they move during the school year, they **may** finish the year at their current school, but they **must** change schools the next year.

In all cases, reassignments are subject to any special education services a student may require.

Detailed move rules are available in the Superintendent's Procedures for Student Assignment.<sup>8</sup>

---

<sup>8</sup> Available on the district website: <http://www.seattleschools.org/admissions>

## SECTION III: ACCESS TO PROGRAMS AND SERVICES

Seattle Public Schools offers a variety of programs and services to meet a range of student needs, including English Language Learners (ELL), students eligible for special education services, students who are homeless, and students eligible for advanced learning. Many students are assigned to their attendance area school regardless of most service needs. For required special education services not available at every attendance area school, a linked school is designated. This provides predictable assignments for students who need these services.

Schools and services are also available for students who have various behavioral, attendance, or academic challenges as well as for students who self-select into certain unique programs. Students are assigned to these schools or programs individually based on specific needs and circumstances, not through the standard assignment process.

### A. Special Education

The Individuals with Disabilities in Education Act (IDEA) requires the district to ensure that “a continuum of alternative placements is available to meet the needs of children with disabilities for special education and related services.” IDEA does not require the full continuum of placement be available at each school in the district. If a student’s IEP requires services that are not available at the student’s attendance area school, the student may be assigned to another school that can offer the services that are included in the IEP and necessary for the student to receive a free, appropriate public education. Per the Washington Administrative Code (WAC), “Unless the IEP of a student with a disability requires some other arrangement, the student shall be educated in the school that he or she would attend if nondisabled. In the event the student needs other arrangements, placement shall be as close as possible to the student’s home.” Special Education Services are provided in a continuum throughout the district.

Resource level special education services are available at every school and follow the general education student assignment process. Students who are eligible for other special education continuum services (Access, Focus, Social/Emotional, SM2, Distinct) are assigned to their attendance area or linked school, and may also apply for assignment to another school that offers those services through School Choice. Linked schools for Special Education services are posted online prior to Open Enrollment, along with linked schools for other programs and services, and provide assignment predictability.<sup>9</sup> For Option Schools, there will be designated seats available for students who are eligible for intensive special education services (Access, Focus, Social/Emotional, SM2, Distinct). When requesting an Option School students will be assigned through the School Choice Process during Open Enrollment.

A very small number of students with exceptional circumstances may require individual assignments based on their IEP. Please refer to the Special Education Change of School Procedure Guide for further information.

Standard assignment rules and tiebreakers apply.

Students who receive centralized special education service assignments to meet their specific IEP driven needs (DHH, Vision, Medically Fragile) are assigned individually based on student needs, and may also apply for assignment to another school offering the same services through School Choice.

These assignments are in alignment with approved boundaries and feeder patterns, to the extent possible, depending on capacity, proximity, and individual service needs. Assignments are made

---

<sup>9</sup> If warranted by student needs, intensive special education services may be added at other locations and times.



individually to ensure that each student’s IEP requirements can be met and that the appropriate services are available at the assigned school. Transportation for students with disabilities is based on individual IEP service needs.

### **B. English Language Learners**

Most students who need ELL services are assigned to their attendance area school. Students who need ELL services may also apply for other schools through School Choice. Bilingual Orientation Center services are available for newcomers.

### **C. Advanced Learning<sup>10</sup>**

There are several services and programs to meet the needs of advanced learners. Some students may be served at their attendance area school; others will follow pathways with their peers.

#### Highly Capable Cohort (HCC)

HCC assignment pathways are based on where students live, not where they attend school. (See Appendix A for attendance areas and feeder patterns.)

- HCC students entering grades 1-8, who apply during Open Enrollment through May 31, will be assigned consistent with the approved HCC pathways, based on where they live.
- Students entering grades 1-8 who become HC-eligible after Open Enrollment will be assigned consistent with the HCC pathways, based on where they live.
- Students entering 6<sup>th</sup> grade will be assigned to a middle school consistent with the approved HCC pathways, based on where they live.
- Assignment to the non-pathway school may be requested during Open Enrollment through May 31 and depends on space available.
- All 9<sup>th</sup> graders will be assigned to their pathway high school and may apply for the HC/IBX program at Ingraham.

If students enrolled in HCC apply for their attendance area school during Open Enrollment through May 31, they will be assigned to their attendance area school.

#### HC/IBX Program at Ingraham High School

A second advanced learning option for high school students who are HC-eligible is offered at Ingraham. Qualified HC students will generally take core classes together and then enroll in International Baccalaureate classes beginning in 10<sup>th</sup> grade – a year earlier than usual. An accelerated curriculum leads to an early IB diploma, allowing seniors to complete internships, college classes, and further electives.

#### Advanced Learning Opportunities (ALO)

Students in grades 1-8 who are AL or HC eligible and enroll at their attendance area school will receive ALO services at their attendance area school. Eligibility for HC or AL services will be maintained as long as the student is continuously enrolled in Seattle Public Schools.

#### Advanced Learners (AL)

Advanced Learning (Spectrum) is offered for elementary and middle school students identified through district testing. For elementary grade students, AL is offered at **one or more schools in each service**

---

<sup>10</sup> See additional information in Sections II-C and II-D.

[areaschool site](#). Every attendance area middle school also offers AL. Newly-eligible elementary students must apply for AL during Open Enrollment through May 31. Assignment to AL in grades 1-5 depends on space available; tiebreakers apply during Open Enrollment.

AL eligible students in grades 6-8 are guaranteed ~~assignment~~ services ~~at their~~ to the AL program at their attendance area middle school. Advanced Learners in 5<sup>th</sup> grade at elementary schools will be automatically assigned to 6<sup>th</sup> grade AL at their attendance area middle school. Students newly eligible for advanced learning who are already assigned to their attendance area middle school will be automatically assigned to AL at that school. Advanced Learning students who are already assigned to their attendance area middle school (but are not assigned to AL) who are entering 7<sup>th</sup> or 8<sup>th</sup> grade will also be automatically assigned to AL at that school.<sup>11</sup> Advanced Learning students who are not already assigned to their attendance area middle school will be assigned to AL at their attendance area middle school upon request, if they apply during Open Enrollment through May 31. Students who are AL-eligible may also apply for an AL program at any other school through School Choice, during Open Enrollment through May 31; assignment depends on space available; tiebreakers apply during Open Enrollment. After waitlists have been dissolved, program changes within the same school will be at principal discretion.

#### **D. Montessori**

The Montessori program is offered at Daniel Bagley Elementary School. Students, including those who live in a school's attendance area, must apply for Montessori. Students who live in other attendance areas may also apply through the regular School Choice process. Assignment depends on space available; tiebreakers apply during Open Enrollment. After waitlists have been dissolved, program changes within the same school will be at principal discretion. Leschi offers a blended (contemporary and Montessori) program to all students.

#### **E. International Schools with Dual Language Immersion**

There are feeder pathways for dual language immersion students at international schools. Dual language immersion pathways are implemented as each cohort of students is ready to move to the next level. Assignment pathways are based on where students attend school (not where they live):

John Stanford & McDonald > Hamilton > Lincoln  
Beacon Hill & Dearborn Park > Mercer > Rainier Beach  
Concord > Denny > Chief Sealth

Assignment is guaranteed for non-attendance area dual language immersion students who apply for their pathway school during Open Enrollment; after Open Enrollment, assignment is based on seat availability.<sup>12</sup>

#### **F. Programs and Services**

Information about locations of programs and services that could impact family choices will be available to families prior to the Open Enrollment period. Decisions will also be reflected in the designation of linked attendance area schools and will specify the services or program(s) for which the schools are linked.<sup>13</sup> Information is also provided in quarterly reports to the Board, available online. (See School Board Policy # 2200 for additional information.)

---

<sup>11</sup> Unless the student is already assigned to a program other than General Education, such as HCC

<sup>12</sup> One of the choices listed must be for the pathway school without designation of AL (or HCC, if applicable).

<sup>13</sup> Changes not connected to the Open Enrollment process are adjusted as needed. If warranted by student needs, intensive special education services may be added at other locations and times.

Service schools provide specific services or unique academic programs that are not offered at attendance area or option schools (See Appendix C).

## SECTION IV: SCHOOL CHOICE

### A. Open Enrollment

School Choice allows students to apply for any school(s) beginning during the Open Enrollment period through the end of May. A student may apply for any combination of attendance area schools and/or option schools. Students who apply for and receive a choice assignment will receive a new assignment to that choice school (or program). Students with a choice assignment will be continued at that school through the highest grade served, as long as the school offers the services the student needs. Open Enrollment applications will be processed as follows:

- All first choices will be processed first, then second choices next, etc.
- If more students apply than can be assigned, the approved tiebreakers are used.
- Waitlists established during Open Enrollment processing are based on the same processing sequence and tiebreakers used when making assignments.
- Each student may have one assignment and, if desired, be on one waitlist. Waitlists stay active through May 31 and will be dissolved on August 31, after which there are no further waitlist moves for the school year.<sup>14</sup>
- If a student submits an application and gets assigned to the first choice school, the previous assignment is dropped and the student is not on any waitlist.
- If a student submits an application and gets assigned to one of the choices other than the first choice, the previous assignment is dropped and the student is put on the waitlist for the first choice.
- If a student submits an application and doesn't get assigned to any of the choices, the previous assignment is still in place, and the student is put on the waitlist for the first choice.

After Open Enrollment through May 31, students will be assigned to available choice seats on a first-come, first-served basis. After May 31, assignments for new students are to their attendance area school, or to an option school with space available and without a waitlist.

### B. Tiebreakers

If more students apply for a school during Open Enrollment than can be assigned, tiebreakers determine assignment and waitlist status.

<b>STANDARD TIEBREAKERS</b>			<b>Option Schools</b> (all grades)
for available seats after assignment of attendance area students			
Attendance Area Elementary / K-8 Schools	Attendance Area Middle Schools	Attendance Area High Schools	
1. Sibling 2. Lottery	1. Sibling 2. Feeder School 3. Lottery	1. Sibling 2. Lottery	1. Sibling 2. GeoZone 3. Lottery

<sup>14</sup> The District anticipates making all waitlist moves by May 31. No students will be added to the waitlist after May 31, but waitlists will be maintained until August 31.

Montessori Tiebreakers
Elementary Schools
1. Attendance Area
2. Sibling
3. Lottery

AL Tiebreakers (Spectrum)	
Elementary / K-8 Schools	Middle Schools
1. Service Area	1. Sibling
2. Sibling	2. Feeder School
3. Lottery	3. Lottery

HCC Tiebreakers (formerly APP)		
Elementary Schools	Middle Schools	High Schools
1. Sibling	1. Sibling	1. Sibling
2. Lottery	2. Feeder School	2. Lottery
	3. Lottery	

**C. Waitlists**

Waitlists established during Open Enrollment processing are based on the same processing sequence and tiebreakers used when making assignments.

After Open Enrollment assignments are made and waitlists are established:

- Students may be added to the end of any waitlist through May 31, but no student may be on more than one waitlist at a time.
- Waitlists stay active through May 31.<sup>15</sup>
- If there are multiple students added to the same school/grade/program waitlist on the same day, those students only will be sequenced by lottery. (They will not move ahead of students already on the waitlist from Open Enrollment or from a previous day.)
- If a school does not have a waitlist, assignments for space available are first come, first served through May 31.

**D. Siblings and School Choice**

SPS provides a variety of options for families who would like to have siblings assigned to the same school. Some options are guaranteed and some are not. A student’s designated school is their attendance area school, or a linked school to which the student is assigned because the attendance area school does not have the required special education or ELL services the student needs.

1. New students who are siblings in the same grade span will start out assigned together at their designated school:

---

<sup>15</sup> The District anticipates making all waitlist moves by May 31. No students will be added to the waitlist after May 31, but waitlists will be maintained until August 31.

- If siblings have different designated schools due to different service needs, the sibling without required special education or ELL service needs can be assigned to the other sibling's school upon request until May 31 (or at the time of enrollment, if later).
2. Siblings in the same grade span who are assigned to different schools:
    - All siblings receive a tiebreaker priority during Open Enrollment when applying for a school which another sibling currently attends and will attend the following year.
    - After Open Enrollment through May 31, any student will be assigned to their attendance area school upon request. If siblings have different designated schools due to different service needs, the sibling(s) without required special education or ELL service needs can be assigned to the other sibling's school upon request until May 31.
  3. Siblings who are already assigned together, but who apply for reassignment together to one or more schools for the following school year:
    - If the siblings apply for the same schools in the same order during Open Enrollment, the applications will be processed using the "keep siblings together" rule: If all siblings cannot be assigned together to one of the schools listed, they will keep their original school assignments and all will be waitlisted for the first choice school. (No siblings are reassigned unless all siblings can be reassigned to the same school.)
    - Siblings may apply for different programs at the same school (e.g. one of the siblings applies for ~~At~~-montessori at a school, while the other does not apply for any special program), as long as they apply for the same schools in the same order.
  4. Twins<sup>16</sup> who apply for assignment together to one or more schools:
    - If they apply for the same schools in the same order during Open Enrollment, the resulting school and program assignment of the student with the highest SPS student ID number will determine the assignment of the twin, as long as that school provides all required services for both students.
    - They may apply for different programs at the same school (e.g. one of the siblings applies for the montessori ~~At~~-program at a school while the other does not apply for any special program) as long as they apply for the same schools in the same order. A twin who is not eligible for the assigned program of the sibling with the highest student ID number will be assigned to the General Education program at the same school (or the appropriate Special Education program, if applicable).
    - If the siblings are waitlisted for the same school and program during Open Enrollment, the twin with the lower student ID number will be placed on that waitlist immediately after the twin with the highest ID number.

---

<sup>16</sup> This includes triplets and other multiples, as well as siblings in the same grade.

## APPENDIX A

### Attendance Areas and Feeder Patterns

#### HIGH SCHOOLS

Attendance Area High Schools: Ballard, Franklin, Garfield, Nathan Hale, Ingraham, Rainier Beach, Roosevelt, Chief Sealth, West Seattle

Option High Schools: The Center School, Cleveland STEM

#### ELEMENTARY AND MIDDLE SCHOOLS

Attendance Area Middle Schools: Aki Kurose, Denny, Eagle Staff, Eckstein, Hamilton, Jane Addams, Madison, Meany, McClure, Mercer, Washington, Whitman

Each middle school attendance area has a group of elementary schools that feed into the middle school.

MIDDLE SCHOOLS	ELEMENTARY FEEDER SCHOOLS (Including K-8 Attendance Area Schools)	OPTION SCHOOLS <sup>17</sup>	HCC PATHWAYS <sup>18</sup>
Aki Kurose	Dunlap, Emerson, Graham Hill, Martin Luther King Jr., Rainier View, Wing Luke	South Shore PK-8	Thurgood Marshall Washington Garfield
Denny	Arbor Heights, Concord, Highland Park, Roxhill, Sanislo, West Seattle ES	STEM K-8	Thurgood Marshall Madison West Seattle
Eagle Staff	Broadview-Thomson (K-8), Daniel Bagley, Greenwood, Northgate, Viewlands*	<del>Licton Springs K-8</del>	Cascadia Eagle Staff Lincoln
Eckstein	Bryant, Green Lake*, Laurelhurst, Sand Point, View Ridge, Wedgwood	Thornton Creek	Decatur <sup>19</sup> Jane Addams  Lincoln
Hamilton	B. F. Day, Green Lake*, West Woodland	John Stanford McDonald	Cascadia Hamilton Lincoln
Jane Addams	John Rogers, Olympic Hills, Olympic View, Sacajawea,	Cedar Park Hazel Wolf K-8	Cascadia Jane Addams Lincoln
Madison	Alki, Fairmount Park, Gatewood, Genesee Hill, Lafayette	Pathfinder K-8	Thurgood Marshall Madison West Seattle
Meany	Leschi, Lowell, Madrona, McGilvra, Montlake, Stevens	TOPS K-8	Thurgood Marshall Washington Garfield
McClure	Catharine Blaine (K-8), Coe, John Hay, Lawton, Magnolia	Queen Anne	Cascadia Hamilton Lincoln
Mercer	Beacon Hill, Dearborn Park, Hawthorne, Kimball, Maple, <del>Van Asselt</del> <a href="#">Rising Star</a>	Orca K-8	Thurgood Marshall Washington Garfield
Washington	Bailey Gatzert, John Muir, Thurgood Marshall		Thurgood Marshall Washington Garfield
Whitman	Adams, Loyal Heights, North Beach, Viewlands*, Whittier	Salmon Bay K-8 <del>Licton Springs K-8</del>	Cascadia Eagle Staff Lincoln

\*Elementary schools with an asterisk feed into multiple middle schools. Assignment to attendance area middle schools is based on student address.

<sup>17</sup> Option schools are located in proximity to attendance area schools. Living within an option school's GeoZone is not a guarantee of assignment.

<sup>18</sup> Ingraham also offers the advanced HC/IBX program, but is not an HC pathway high school.

<sup>19</sup> HCC students living in the Green Lake attendance area will be assigned to Cascadia for HCC.

## APPENDIX B

### **Geographic Zones for Option School Tiebreakers**

The tiebreakers for option schools are:

1. Sibling
2. Geographic Zone (GeoZone)
3. Lottery

GeoZones give tiebreaker priority for students who live near the school and serve as a tool for capacity management. In some cases, they can also be used to improve diversity. GeoZones are not a guarantee of assignment to the requested option school, and are likely to change periodically.

Maps of GeoZones are available on the School Directory page of the [www.seattleschools.org](http://www.seattleschools.org) website.

#### High School Option Schools

- Center School
- Cleveland STEM

#### K-8 Option Schools

- Hazel Wolf
- Licton Springs
- Orca
- Pathfinder
- Salmon Bay
- South Shore PK-8
- STEM K-8
- TOPS

#### K-5 Option Schools

- Cedar Park
- John Stanford
- McDonald
- Queen Anne
- Thornton Creek



## **APPENDIX C**

### **Service Schools**

Students are usually placed in a service school based on individual assessment. Assignments to service schools are choice assignments except for the Secondary Bilingual Orientation Center (SBOC), which is a designated assignment. Additional information is available in the Superintendent's Procedures for Student Assignment<sup>20</sup>.

#### **Service Schools:**

- Head Start
- Education Admission Centers
- Special Education Consortium (Children's Home Society, McGraw Center, Ryther Center, Experimental Education Unit, Birth to 3 Contracts, Private School Services, and other non-SPS services)

---

<sup>20</sup> Available online at [www.seattleschools.org/admissions](http://www.seattleschools.org/admissions)

## **APPENDIX D**

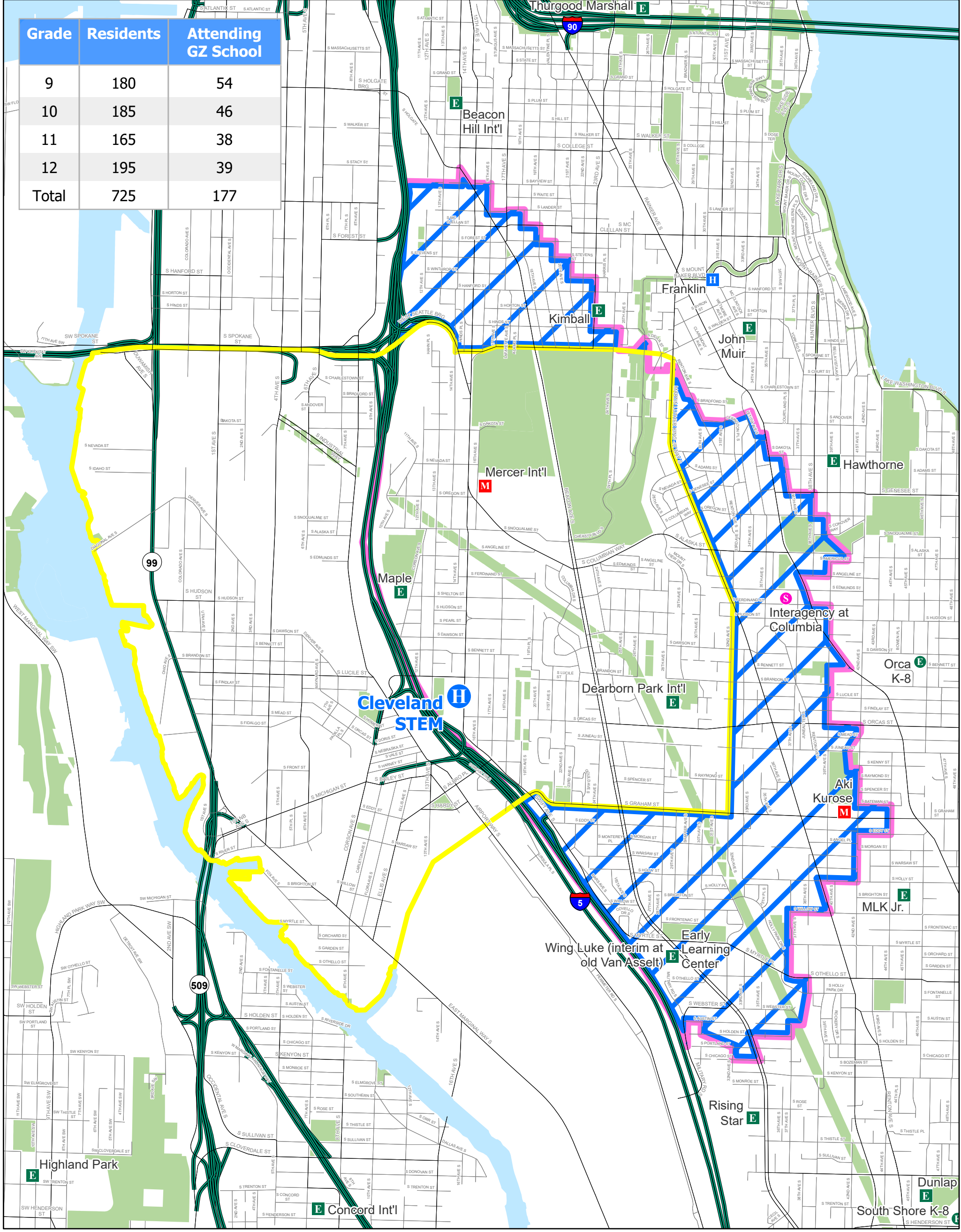
### **Option Schools with Continuous Enrollment**

Option schools with continuous enrollment offer unique services, opportunities, and learning environments to meet individual student needs. Students may request assignment to these schools or may be referred to one. These schools do not have geozones. Families are welcome to apply to these schools during Open Enrollment and throughout the school year.

Option schools with continuous enrollment:

- Cascade Parent Partnership Program
- Interagency Programs
- Middle College High School
- Nova
- South Lake
- Skills Center
- Seattle World School

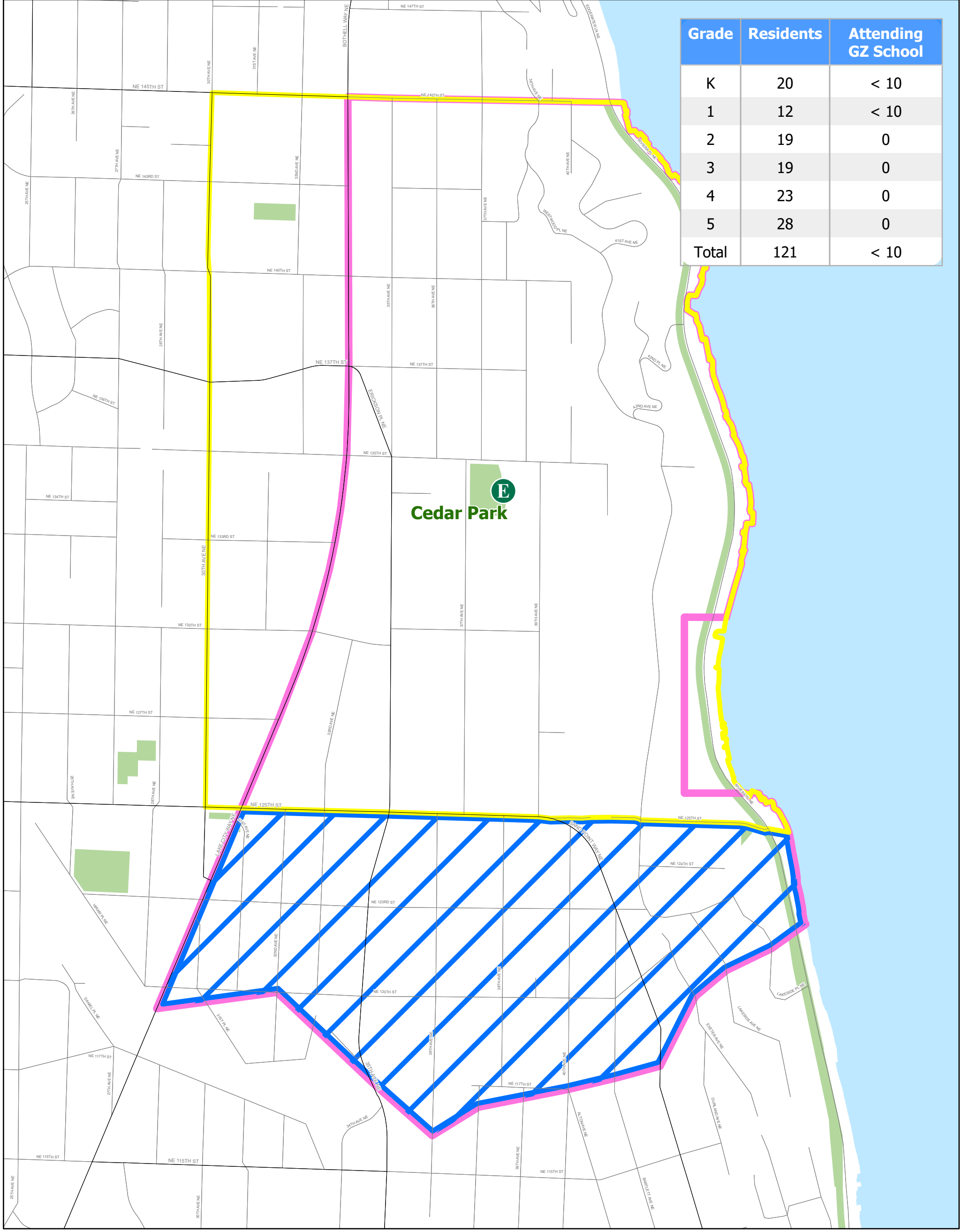
Grade	Residents	Attending GZ School
9	180	54
10	185	46
11	165	38
12	195	39
<b>Total</b>	<b>725</b>	<b>177</b>



<b>E</b> Elementary	<b>H</b> High	Geo Zone
<b>E</b> Option Elem.	<b>H</b> Option High	Walk Zone
<b>M</b> Middle	<b>S</b> Service School	Analysis Area

October 2018 resident counts are for students who live within an option school's walk zone but are outside of the geo-zone.

The names on this map are not intended to reflect the official name of any school building. They are instead intended to ensure better public understanding based upon familiar reference, particularly in situations where program and school building names differ. This information has been compiled by SPS staff from a variety of sources and is subject to change without notice. SPS makes no representations or warranties, expressed or implied, as to accuracy, completeness, timeliness, or rights to the use of such information. SPS shall not be liable for any general, special, indirect, incidental, or consequential damages including, but not limited to, lost revenues or lost profits resulting from the use or misuse of the information contained on this map. Any sale of this map or information on this map is prohibited. MapFile: GZ\_WZ\_analysis\_20190917



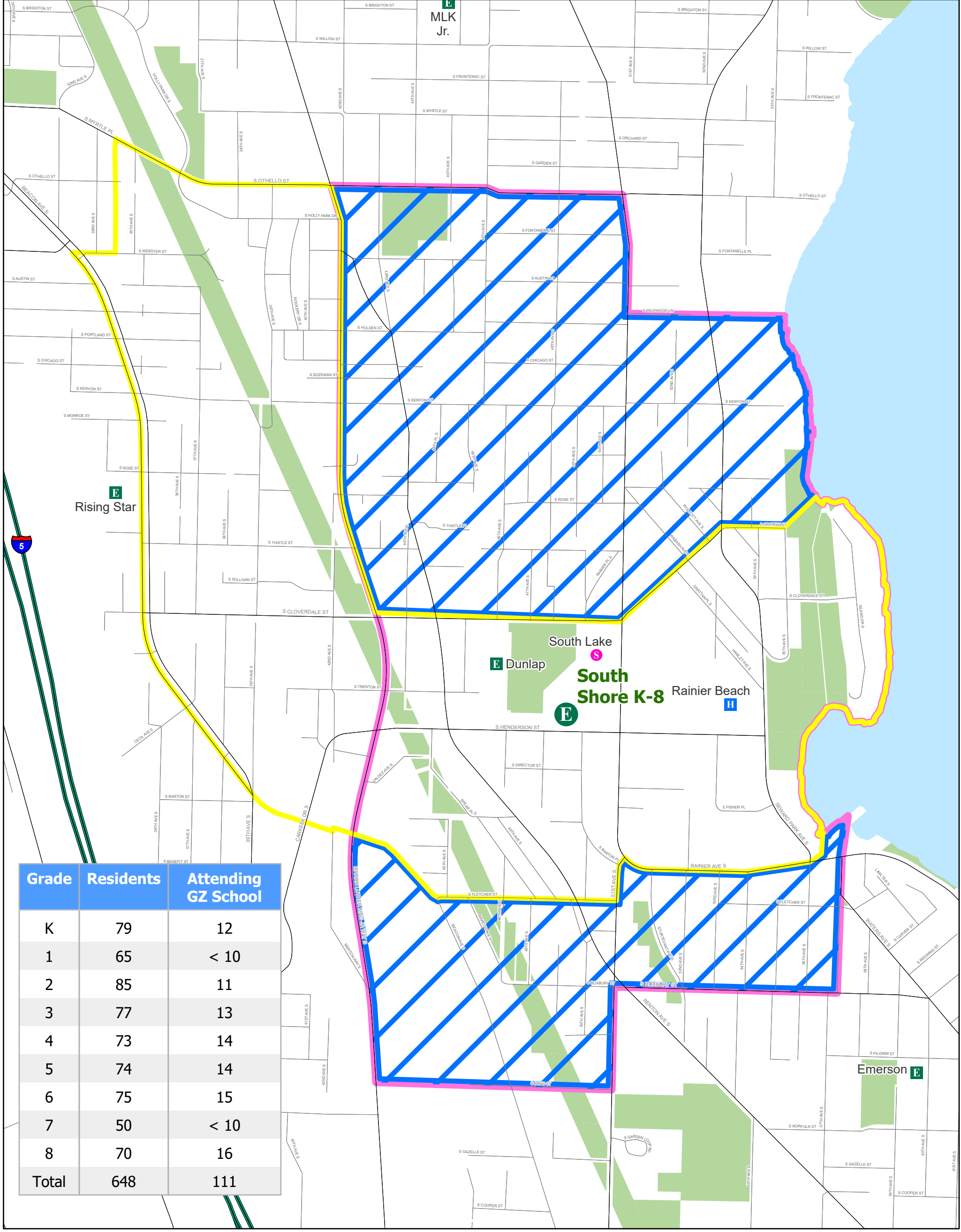
Grade	Residents	Attending GZ School
K	20	< 10
1	12	< 10
2	19	0
3	19	0
4	23	0
5	28	0
<b>Total</b>	<b>121</b>	<b>&lt; 10</b>

Elementary	High	Geo Zone
Option Elem.	Option High	Walk Zone
Middle	Service School	Analysis Area

October 2018 resident counts are for students who live within an option school's walk zone but are outside of the geo-zone.

The names on this map are not intended to reflect the official name of any school building. They are instead intended to ensure better public understanding based upon familiar reference, particularly in situations where program and school building names differ. This information has been compiled by SPS staff from a variety of sources and is subject to change without notice. SPS makes no representations or warranties, expressed or implied, as to accuracy, completeness, timeliness, or rights to the use of such information. SPS shall not be liable for any general, special, indirect, incidental, or consequential damages including, but not limited to, lost revenues or lost profits resulting from the use or misuse of the information contained on this map. Any sale of this map or information on this map is prohibited. MapFile: GZ\_WZ\_analysis\_20190917





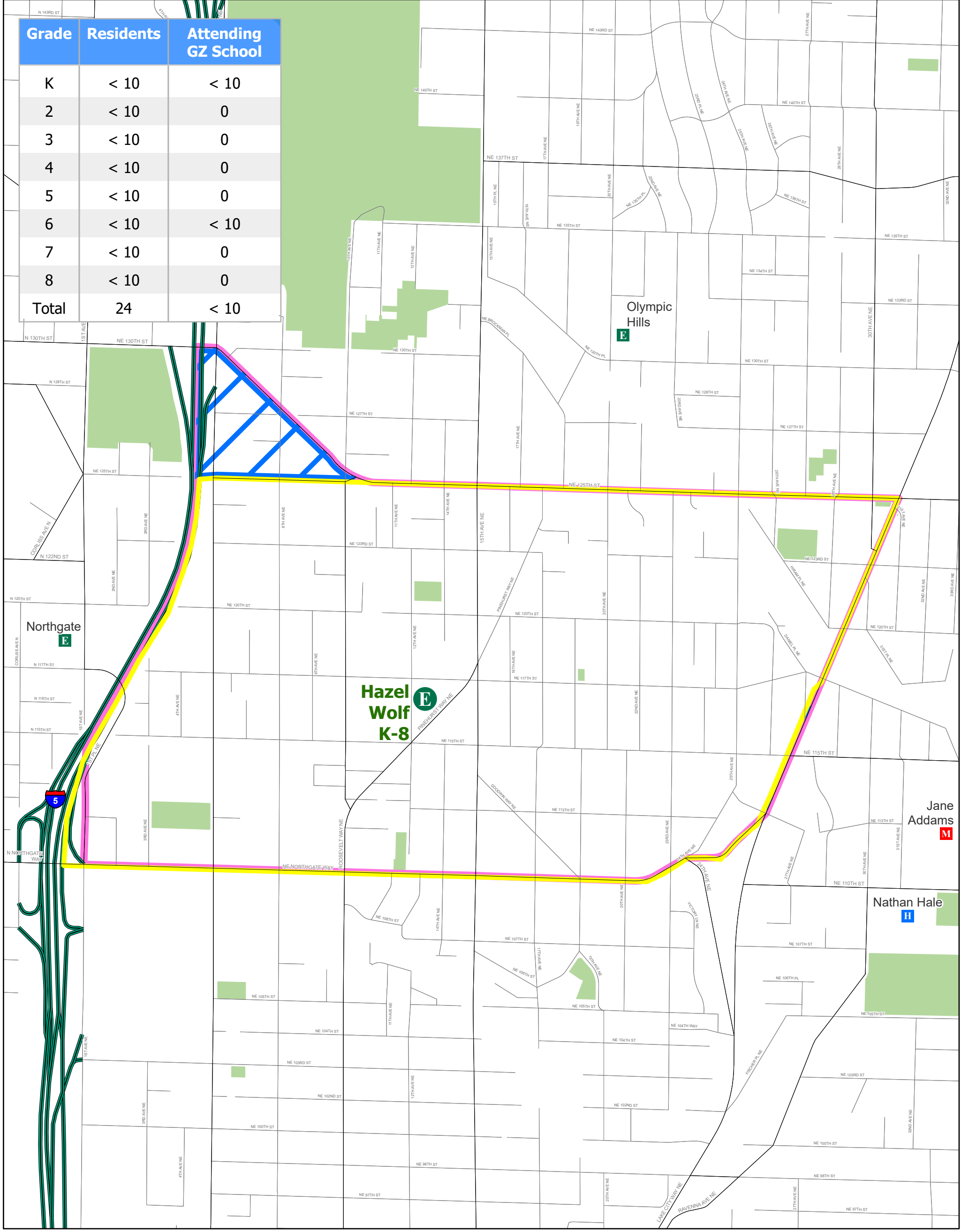
Grade	Residents	Attending GZ School
K	79	12
1	65	< 10
2	85	11
3	77	13
4	73	14
5	74	14
6	75	15
7	50	< 10
8	70	16
<b>Total</b>	<b>648</b>	<b>111</b>

Elementary	High	Geo Zone
Option Elem.	Option High	Walk Zone
Middle	Service School	Analysis Area

October 2018 resident counts are for students who live within an option school's walk zone but are outside of the geo-zone.

The names on this map are not intended to reflect the official name of any school building. They are instead intended to ensure better public understanding based upon familiar reference, particularly in situations where program and school building names differ. This information has been compiled by SPS staff from a variety of sources and is subject to change without notice. SPS makes no representations or warranties, expressed or implied, as to accuracy, completeness, timeliness, or rights to the use of such information. SPS shall not be liable for any general, special, indirect, incidental, or consequential damages including, but not limited to, lost revenues or lost profits resulting from the use or misuse of the information contained on this map. Any sale of this map or information on this map is prohibited. MapFile: GZ\_WZ\_analysis\_20190917

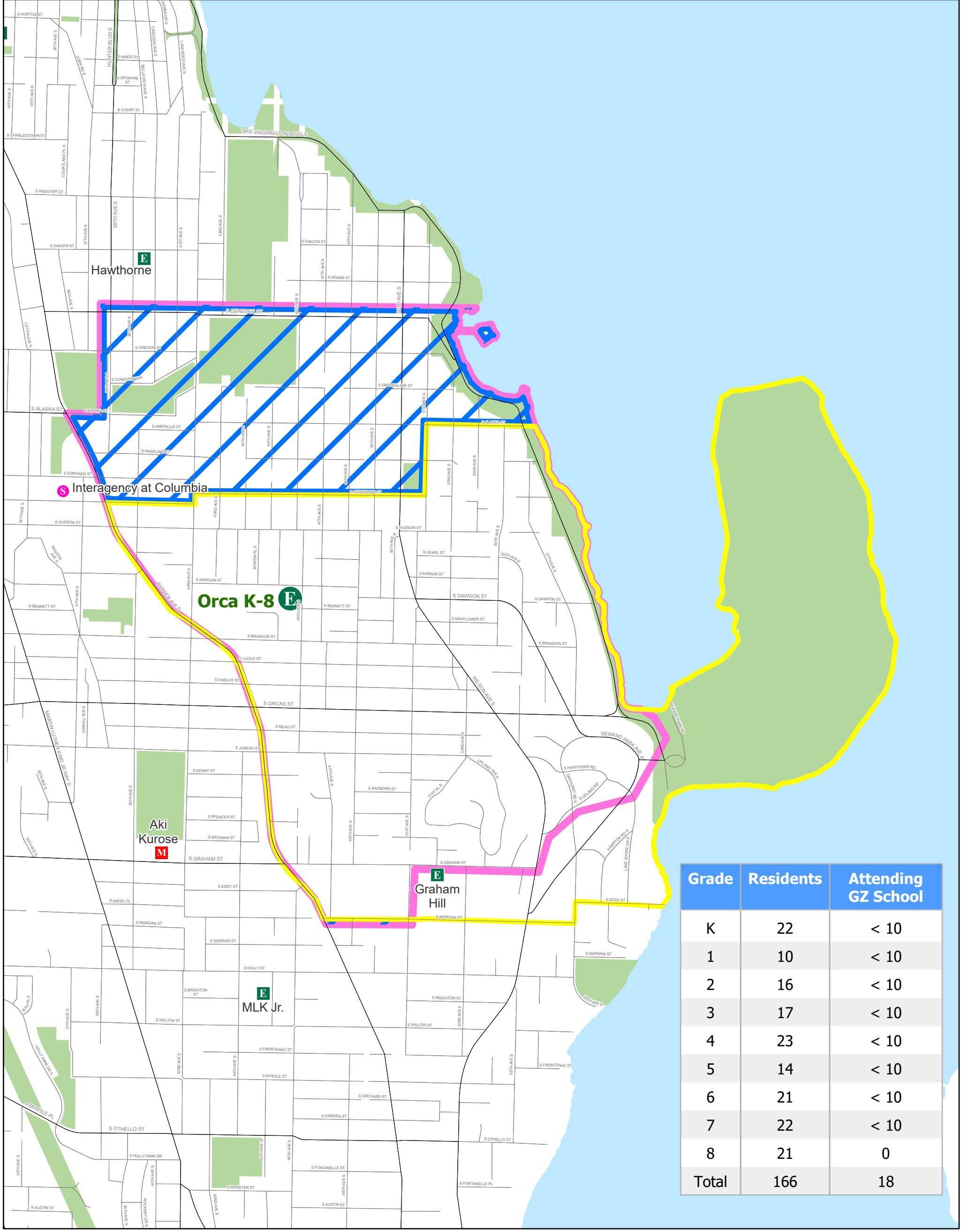
Grade	Residents	Attending GZ School
K	< 10	< 10
2	< 10	0
3	< 10	0
4	< 10	0
5	< 10	0
6	< 10	< 10
7	< 10	0
8	< 10	0
<b>Total</b>	<b>24</b>	<b>&lt; 10</b>



- Elementary
- High
- Geo Zone
- Option Elem.
- Option High
- Walk Zone
- Middle
- Service School
- Analysis Area

October 2018 resident counts are for students who live within an option school's walk zone but are outside of the geo-zone.

The names on this map are not intended to reflect the official name of any school building. They are instead intended to ensure better public understanding based upon familiar reference, particularly in situations where program and school building names differ. This information has been compiled by SPS staff from a variety of sources and is subject to change without notice. SPS makes no representations or warranties, expressed or implied, as to accuracy, completeness, timeliness, or rights to the use of such information. SPS shall not be liable for any general, special, indirect, incidental, or consequential damages including, but not limited to, lost revenues or lost profits resulting from the use or misuse of the information contained on this map. Any sale of this map or information on this map is prohibited. MapFile: GZ\_WZ\_analysis\_20190917



Grade	Residents	Attending GZ School
K	22	< 10
1	10	< 10
2	16	< 10
3	17	< 10
4	23	< 10
5	14	< 10
6	21	< 10
7	22	< 10
8	21	0
<b>Total</b>	<b>166</b>	<b>18</b>

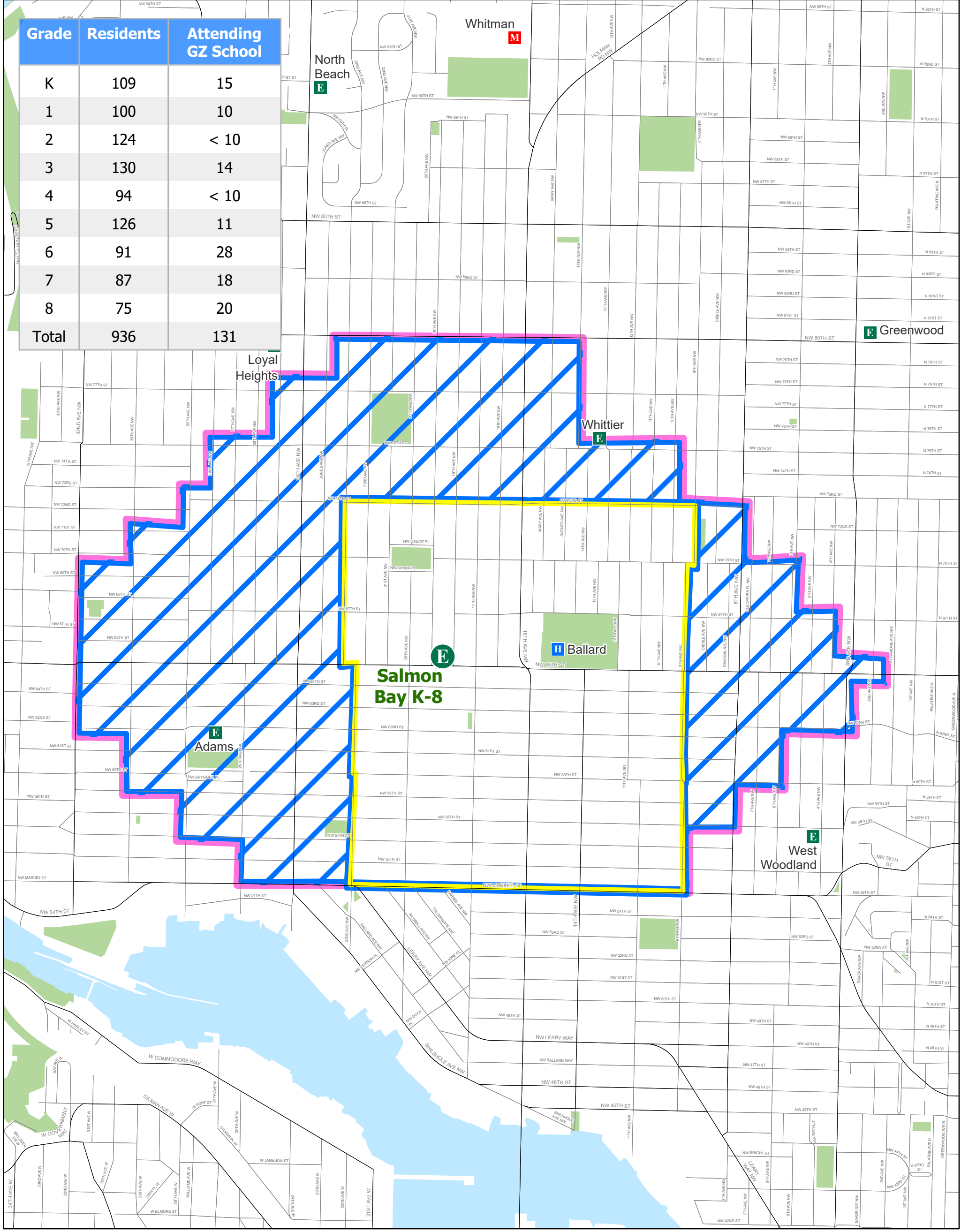
Elementary	High	Geo Zone
Option Elem.	Option High	Walk Zone
Middle	Service School	Analysis Area

October 2018 resident counts are for students who live within an option school's walk zone but are outside of the geo-zone.

The names on this map are not intended to reflect the official name of any school building. They are instead intended to ensure better public understanding based upon familiar reference, particularly in situations where program and school building names differ. This information has been compiled by SPS staff from a variety of sources and is subject to change without notice. SPS makes no representations or warranties, expressed or implied, as to accuracy, completeness, timeliness, or rights to the use of such information. SPS shall not be liable for any general, special, indirect, incidental, or consequential damages including, but not limited to, lost revenues or lost profits resulting from the use or misuse of the information contained on this map. Any sale of this map or information on this map is prohibited. MapFile: GZ\_WZ\_analysis\_20190917



Grade	Residents	Attending GZ School
K	109	15
1	100	10
2	124	< 10
3	130	14
4	94	< 10
5	126	11
6	91	28
7	87	18
8	75	20
<b>Total</b>	<b>936</b>	<b>131</b>



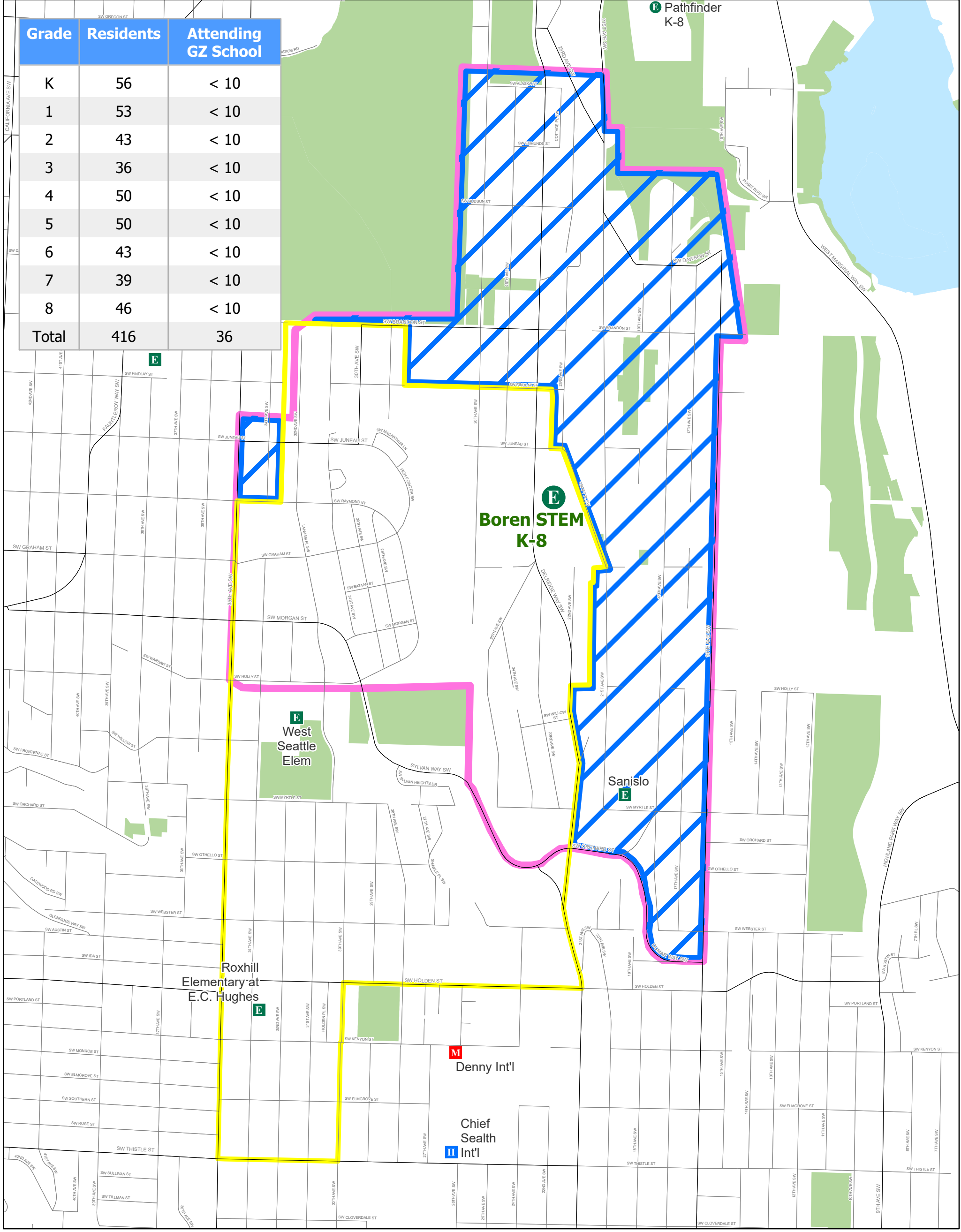
<b>E</b> Elementary	<b>H</b> High	Geo Zone
<b>E</b> Option Elem.	<b>H</b> Option High	Walk Zone
<b>M</b> Middle	<b>S</b> Service School	Analysis Area

October 2018 resident counts are for students who live within an option school's walk zone but are outside of the geo-zone.

The names on this map are not intended to reflect the official name of any school building. They are instead intended to ensure better public understanding based upon familiar reference, particularly in situations where program and school building names differ. This information has been compiled by SPS staff from a variety of sources and is subject to change without notice. SPS makes no representations or warranties, expressed or implied, as to accuracy, completeness, timeliness, or rights to the use of such information. SPS shall not be liable for any general, special, indirect, incidental, or consequential damages including, but not limited to, lost revenues or lost profits resulting from the use or misuse of the information contained on this map. Any sale of this map or information on this map is prohibited. MapFile: GZ\_WZ\_analysis\_20190917



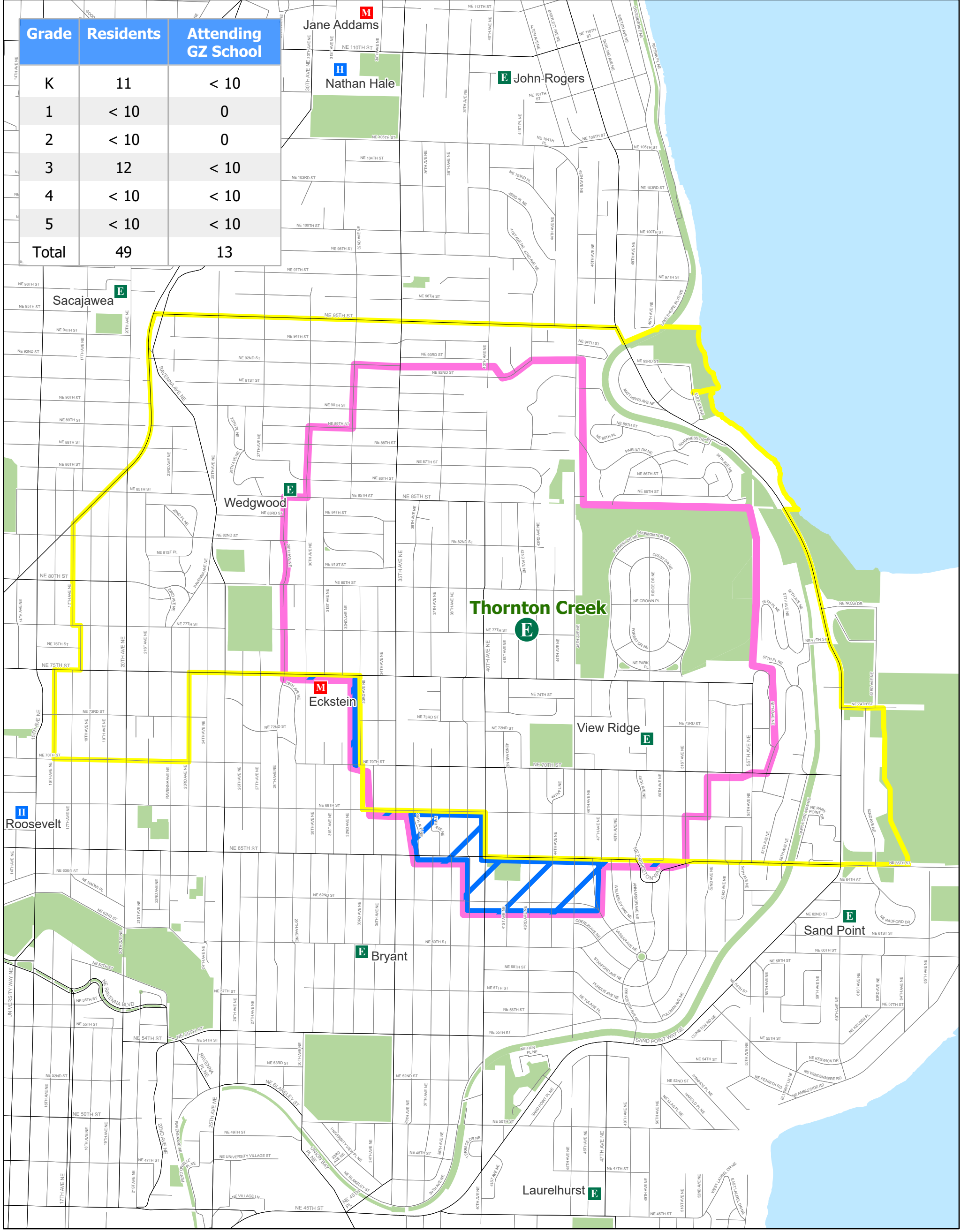
Grade	Residents	Attending GZ School
K	56	< 10
1	53	< 10
2	43	< 10
3	36	< 10
4	50	< 10
5	50	< 10
6	43	< 10
7	39	< 10
8	46	< 10
<b>Total</b>	<b>416</b>	<b>36</b>



<b>E</b> Elementary	<b>H</b> High	Geo Zone
<b>E</b> Option Elem.	<b>H</b> Option High	Walk Zone
<b>M</b> Middle	<b>S</b> Service School	Analysis Area

October 2018 resident counts are for students who live within an option school's walk zone but are outside of the geo-zone.

The names on this map are not intended to reflect the official name of any school building. They are instead intended to ensure better public understanding based upon familiar reference, particularly in situations where program and school building names differ. This information has been compiled by SPS staff from a variety of sources and is subject to change without notice. SPS makes no representations or warranties, expressed or implied, as to accuracy, completeness, timeliness, or rights to the use of such information. SPS shall not be liable for any general, special, indirect, incidental, or consequential damages including, but not limited to, lost revenues or lost profits resulting from the use or misuse of the information contained on this map. Any sale of this map or information on this map is prohibited. MapFile: GZ\_WZ\_analysis\_20190917



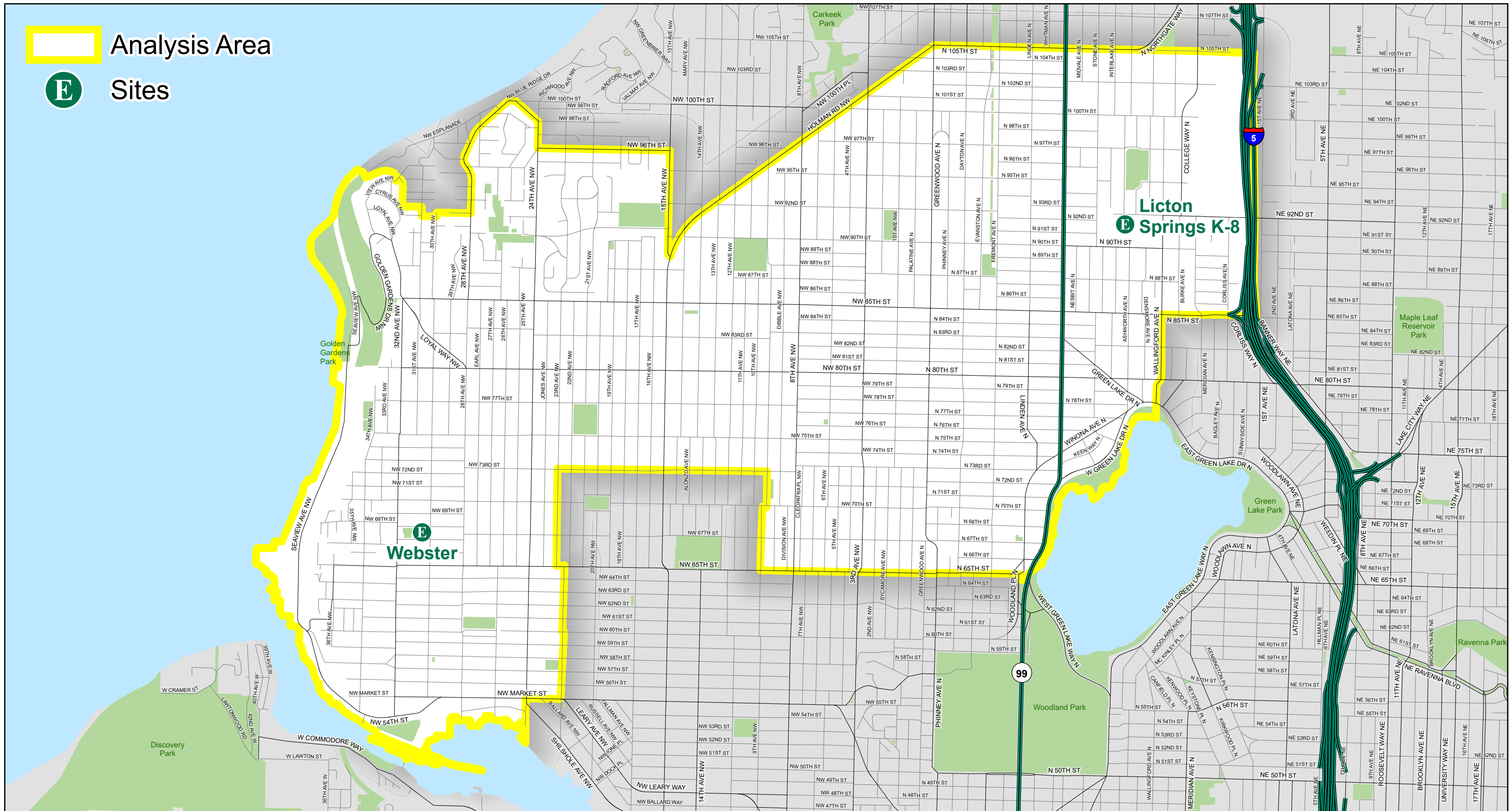
Grade	Residents	Attending GZ School
K	11	< 10
1	< 10	0
2	< 10	0
3	12	< 10
4	< 10	< 10
5	< 10	< 10
<b>Total</b>	<b>49</b>	<b>13</b>

<b>E</b> Elementary	<b>H</b> High	Geo Zone
<b>E</b> Option Elem.	<b>H</b> Option High	Walk Zone
<b>M</b> Middle	<b>S</b> Service School	Analysis Area

October 2018 resident counts are for students who live within an option school's walk zone but are outside of the geo-zone.

The names on this map are not intended to reflect the official name of any school building. They are instead intended to ensure better public understanding based upon familiar reference, particularly in situations where program and school building names differ. This information has been compiled by SPS staff from a variety of sources and is subject to change without notice. SPS makes no representations or warranties, expressed or implied, as to accuracy, completeness, timeliness, or rights to the use of such information. SPS shall not be liable for any general, special, indirect, incidental, or consequential damages including, but not limited to, lost revenues or lost profits resulting from the use or misuse of the information contained on this map. Any sale of this map or information on this map is prohibited. MapFile: GZ\_WZ\_analysis\_20190917





The names on this map are not intended to reflect the official name of any school building. They are instead intended to ensure better public understanding based upon familiar reference, particularly in situations where program and school building names differ. This information has been compiled by SPS staff from a variety of sources and is subject to change without notice. SPS makes no representations or warranties, expressed or implied, as to accuracy, completeness, timeliness, or rights to the use of such information. SPS shall not be liable for any general, special, indirect, incidental, or consequential damages including, but not limited to, lost revenues or lost profits resulting from the use or misuse of the information contained on this map. Any sale of this map or information on this map is prohibited. MapFile: LictonSprings\_WebsterBldg\_GZ\_20191001\_955ONLY