



## Board Special Meeting Work Session: 2020-21 Reopening Update

September 3, 2020, 2:00-3:30 p.m.

*Meeting to be held remotely*

By SPSTV Broadcast and [YouTube Streaming](#) (See details below)

By Teleconference: +1 206-800-4125 (Conference ID: 227 256 588#)

### Agenda

#### Call to Order

2:00pm

#### Work Session: 2020-21 Reopening Update

- Building Use
- Childcare

#### Adjourn

3:30pm\*

#### This meeting will be streamed and broadcast by SPSTV:

- **Online Streaming via SPSTV YouTube page:**  
<https://www.youtube.com/channel/UCbWeZY-zLJlpQG-xsJ1Xy2Q?>
- **Broadcast in Seattle**
  - Comcast 26 (standard-def) 319 (hi-def)
  - Wave 26 (standard-def) 695 (hi-def)
  - Century Link 8008 (standard-def) 8508 (hi-def)

**IMPORTANT NOTE:** This meeting will be held remotely without an in-person location per the Governor's proclamation prohibiting public agencies from conducting meetings subject to the Open Public Meetings Act in-person to curtail the spread of COVID-19. The public is being provided remote access through SPSTV (YouTube and Broadcast) and teleconference as noted above. There is a maximum capacity for the teleconference line, and a "waiting room" may be utilized to address capacity. Additional attendees will be admitted from the waiting room as capacity permits.

*Special meetings of the Board, including work sessions and retreats, may contain discussion and/or action related to the items listed on the agenda. Executive sessions are closed to the public per RCW 42.30. \*Times given are estimated.*



SEATTLE  
PUBLIC  
SCHOOLS

# WORK SESSION

## Building Use and Child Care

Sept. 3, 2020

# BUILDING USES

---

- Special Education services
- Meal pick up sites at 40 buildings
- Technology resource centers at eight buildings
- Child care currently at 47 buildings
- Health centers expected at 30 buildings

# PREPARING BUILDINGS

---

- Heating, ventilation, and air conditioning (HVAC) systems performance assessed to determine the supply of fresh air
- Site plans are being prepared to support building uses and plan for entrances and travel paths

# SITE PLANNING

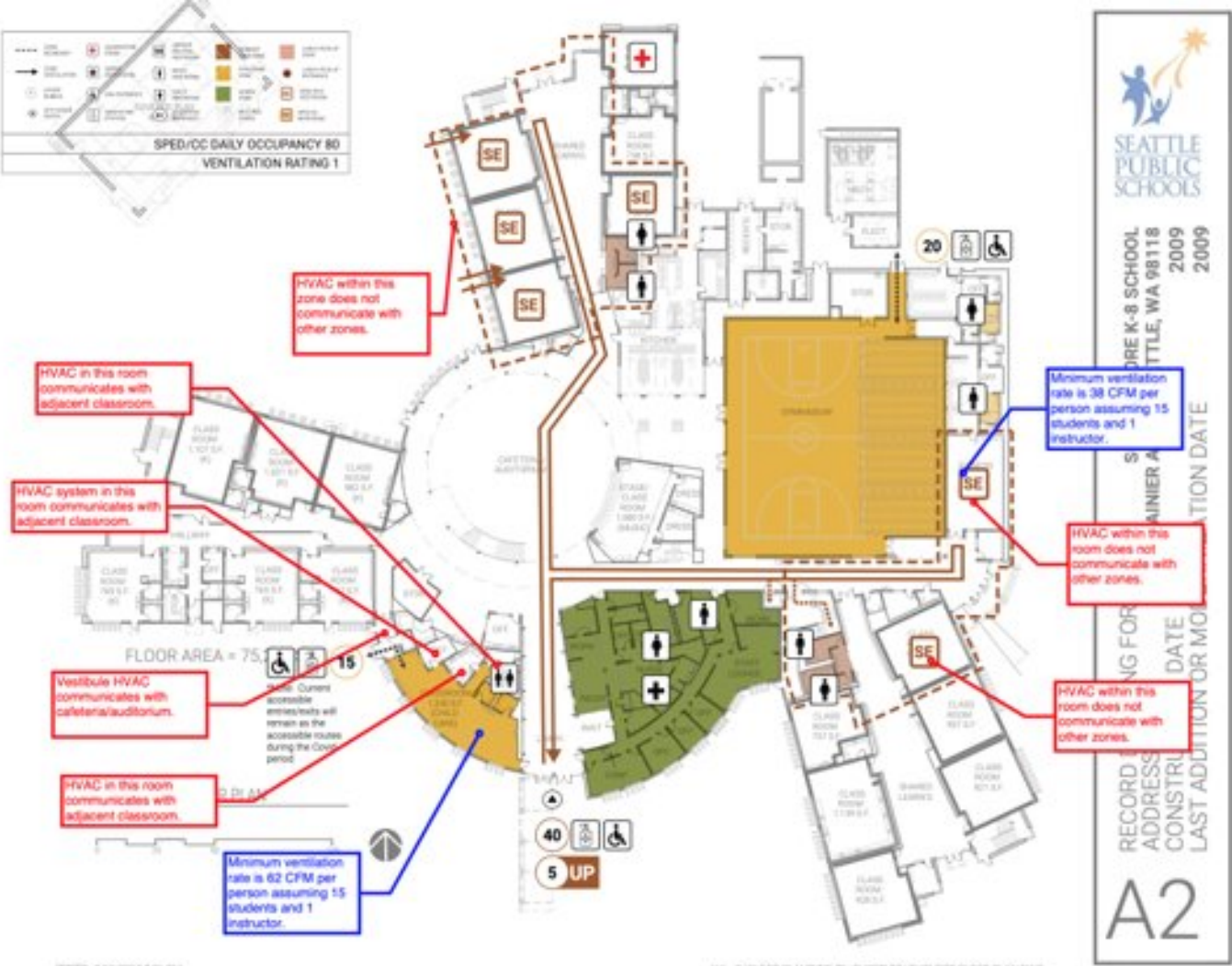


PHOTO: 2/10/2019 2:38 PM

FILE: Q:\FLOOR PLANS\SHORE\SHORE K-8 FLOOR PLAN\3940



# TECHNOLOGY RESOURCE CENTERS

---

- Laptop and Seattle Public Schools (SPS) device support
- Hot spots support
- Support with remote learning software (e.g., Seesaw, Schoology) and other educational resources
- General technology resource information and support
- Support with translation software
- Additional English Language instructional support
- Current sites: John Marshall, Chief Sealth High School, Mercer Middle School
- Sites opening soon: Concord International Elementary, Rainier View Elementary, Aki Kurose Middle School, Bailey Gatzert Elementary and Nathan Hale High School



# SPECIAL EDUCATION

---

- Individualized Education Programs (IEPs) will drive remote and in-person learning. IEPs will be reviewed within 30 school days of the start of school.
- Staff have been in professional development for supporting accommodations and modifications for general education and special education services.
- If students are not making meaningful growths on IEP goals, IEP teams can convene to determine if additional supports or trainings are needed. IEP meetings will be conducted with families, students (if appropriate) and school staff.
- If in-person services are determined by the IEP team after a review of data, the IEP team will coordinate with the Special Education Department and Health Services to determine that the appropriate health and safety guidelines are in place for in-persons services.
- If the student is enrolled in child care at an SPS school, coordination between child care providers and the IEP team will be considered to facilitate transitions that follow health and safety guidelines.

# 2020-21 SPS PRESCHOOL PROGRAMS

Program	Classrooms	Capacity	Total SEA Staff
<b>Seattle Preschool Program</b> <ul style="list-style-type: none"> <li>• <i>Seattle Preschool Program (Full-day)</i></li> <li>• <i>Seattle Preschool Program Head Start</i></li> <li>• <i>Seattle Preschool Program Plus/Head Start Plus</i></li> </ul>	<b>29</b> 5 6 18	<b>544</b> 100 120 324	31 Cert 23 Classified
<b>Early Childhood Special Education</b> <ul style="list-style-type: none"> <li>• <i>Developmental Preschool (Part-day)</i></li> <li>• <i>Preschool Continuum of Intensive Service (PCIS)</i></li> <li>• <i>Medically Fragile</i></li> </ul>	<b>23</b> 16 5 2	<b>476</b> 384 80 12	26 Cert 46 Classified 1:1's
<b>Head Start</b> <ul style="list-style-type: none"> <li>• <i>Full-day Model</i></li> <li>• <i>Part-day Model</i></li> </ul>	<b>10</b> 4 6	<b>197</b> 80 117	Lead Teacher 17 Assistants 28
TOTAL SPS Preschool (40 Elementary Schools)	<b>62</b>	<b>1,217</b>	<b>171</b>



# SPS PRESCHOOL: REMOTE FALL 2020

Time	Monday/Tuesday/Thursday/Friday
8:30-9:00	Morning Circle/Large Groups SEL
9:00 – 9:30	Movement/ Recess
9:30 – 10:00	Break
10:00 – 10:30	Small Group Instruction/PDR *Plan* Math/Literacy
10:30 – 11:00	Break
11:00 – 11:45	SeeSaw Asynchronous Learning Experiences *Do* Art/Science/Literacy/Movement/SEL
11:45– 1:15	Lunch/Rest
1:15 – 2:00	Individual/Small Group Instruction
2:00 – 2:30	Afternoon Playdate *Review* Music/Classroom Connections
2:30 – 3:00	Family Connections

- Family Connection visits
- Synchronous Activities (Morning Circle/ Afternoon Playdate)
- Independent Work: weekly packets aligned with videos SPS PreK YouTube URL:

[www.youtube.com/c/SeattlePublicSchoolsPreschool](http://www.youtube.com/c/SeattlePublicSchoolsPreschool)

- iPads and materials ordered
- Individual kits



SUPPLY ORDERED	QUANTITY PER STUDENT
ALL ABOUT ME SHEET	2 Sheets
BALL	1 Ball
BUTTONS SORTING	20 Buttons
CONSTRUCTION PAPER ASSORTED	1 Package of 50
CONSTRUCTION PAPER MULTI CULT	1 Package of 50
CRAYONS 8 PACK COLORED	1 Box of 8
CRAYONS MULTI CULT	1 Box of 8
DICE LARGE	2 Dice
DRY ERASE 2 POCKET SLEEVE	1 Sleeve
DRY ERASE MARKERS	1 Marker
GLUE STICKS	2 Glue Sticks
Math for Love Tiny Polka Dot	1 Set
MY FIRST PENCIL	2 Pencils
PIPE CLEANERS	25 Pipe Cleaners
PLAY DOH 3 OX	2 Play Doh
POPSICLE STICKS COLORED	25 Sticks
POPSICLE STICKS WOOD	25 Sticks
SHARPENER	1 Sharpener
SNAP CUBES LARGE	20 Snap Cubes
WATERCOLOR PALETTE	1 Palette
WIDE RULED COMPOSITION JOURNAL	1 Book

# CHILD CARE PARTNERS

---

For six months, staff of child care partners have been on the front lines of this pandemic, risking their health to provide full-day care for working families and students

- Spring 2020: 21 sites served 150-180 students daily
  - Greater than 90% of children are those of essential workers
  - Approximately 25% of children are from low-income families
- Summer 2020: 35 sites served up to 900 students daily

# CHILD CARE PROVIDERS KEPT STUDENTS SAFE

---

Strict regulations from the Department of Children, Youth and Families include:

- Health checks upon entry
- Cleaning
- Social distancing
- Communication and closure plan when COVID cases identified
  - There were occasional cases or exposure of COVID-19 leading to temporary closures, but no outbreaks at any sites during spring and summer

# TYPICAL CHILD CARE DAY DURING COVID-19

---

**6 a.m.:** Staff health screening and set-up

**7 a.m.:** Student health screening upon arrival

**7:30 a.m.:** Breakfast, community-building activity

**8:30 a.m.:** Students are grouped by grade level and log into their remote classrooms;

- Staff helps them navigate the remote learning environment, provides them with supplies and support as needed and helps them stay focused

**10 a.m.:** Outside time and staff-led activities

**10:30 a.m.:** Staff support students to

group by grade level, reconnect to classes, and stay focused on learning

**12 p.m.:** Lunch, recess, play and movement activities

**1 p.m.:** Grouping by grade level, reconnect to remote classes

**1:30 p.m.:** Homework help, catching up on asynchronous learning

**2:30 p.m.:** Staff-led enrichment activities – arts, movement, STEM, social connections, and outdoor time

**4 p.m.:** Snack

**5-6 p.m.:** Families pick up students, but do not enter the school building

**6 p.m.:** Staff clean-up and prep for next day

# FULLY INTEGRATED PARTNERSHIP

---

Child care providers have a fully integrated partnership with SPS throughout COVID-19

- Schools and Community Partnerships
  - Weekly meetings and update emails to child care providers
  - Weekly meetings with Facilities and Curriculum and Instruction, especially Early Learning
  - Bi-weekly meetings with Youth Development and Child care leaders (e.g. SOWA, YDEKC, Boys & Girls Club, DEEL)
  - Frequent one-to-one technical assistance and consultation when needed
- Facilities (especially Custodial)
- Nutrition Services
- Schools and Continuous Improvement

# HISTORY OF COMMUNITY ALIGNMENT INITIATIVE

---

The SPS Community Alignment Initiative (CAI) started in 2001 as a partnership between Seattle Public Schools, City of Seattle, School's Out Washington, and community-based organizations.

CAI is a framework that guides how schools partner with school-based licensed child care programs, community learning centers and school-based health centers to collectively support the academic pursuits, social and emotional development and overall well-being of students. Seattle School Board Policy supports this partnership which allows for rent, or a portion thereof, to be waived for providers.

SPS and child care providers' pivot to full-day care this fall is in alignment with the initiative.



# COMMUNITY ALIGNMENT INITIATIVE AND CHILD CARE

---

- Child care providers are selected through a competitive Request for Proposal (RFP) process
- School communities interview providers to ensure they can meet their needs, e.g. students experiencing homelessness
- Annual Alignment agreement and lease renewal process that the principal approves
- In 2019-20, the agreement was updated to reflect SPS' new Strategic Plan, with a focus on serving Students of Color Furthest From Educational Justice
- When issues arise between a provider and a school, the alignment coordinator helps mediate and negotiate a solution
- If the issue cannot be resolved over time, partnership is ended, and a new provider is selected through a competitive RFP

# CHILD CARE ENROLLMENT DURING COVID-19

---

For fall, SPS has asked providers to prioritize:

- Families who receive housing or nutrition supports
  - Students of color furthest from educational justice
  - Families of essential workers
  - Families of SPS educators
- Per our Community Alignment agreements, providers must help families navigate access to state and city subsidy programs
  - Per the Alignment Agreement, providers are responsible for their own enrollment decisions AND
  - All programs offer scholarships to families and prioritize the above students

# CHILD CARE FUNDING DURING COVID-19

---

All child care providers are currently operating at a loss due to:

- Pivot from before/after school care to full-day
- Social distancing rules mean they can enroll fewer students
- Some financial supports have gone away or dried up e.g. SPP funding for emergency child care
- No child care provider is charging for the full cost of care and additional funding has been significantly reduced
- Cost of care in Seattle during COVID can range from \$2,000-\$4,000 per student/month
- Providers spent down their existing reserves providing services in the spring

# CHILD CARE SUPPORT THROUGH THE PANDEMIC

---

We are providing:

- Additional space when possible so that providers can enroll more students
- Custodial supports in shared spaces
- Free meals for students

# RISKS TO CHILD CARE

---

- Some child care providers cannot open this fall because they cannot cover operating expenses.
  - We offered 68 SPS sites, and as of today, only 47 sites are opening. Additional sites may shut down if their enrollment is not high enough.
- In supporting students' remote learning, child care staff are being asked to change their scope of work and learn new skills.
- Students' school attendance while in child care may be affected.
  - Many child care sites do not have sufficient space (to separate students by school/grade) and technology (charging stations, extra devices) to ensure that students will be able log into each part of their remote learning day.

# NEXT STEPS

---

Actions SPS can take to sustain child care for families:

- Provide simple training in SPS' Remote Learning Tools (Teams, SeeSaw, Schoology)
- Provide teaching and learning training on best practices for supporting student learning
- Set an expectation that schools build connections between classroom teachers and providers to coordinate and support learning of their shared students.
- Continue to provide custodial and meal support
- Advocate for more child care funding with city, state and federal
- Both emergency funds during the pandemic and long-term funding for child care.
- As we consider changes to the school day (e.g. a hybrid model), include child care in planning discussions



A photograph of four diverse young children smiling in a school hallway. The image has a blue tint. The children are of various ethnicities and are dressed in casual clothing. One girl in the foreground wears a red shirt with "#WINTER" and a gold necklace. A boy in the center wears a grey hoodie with a yellow Superman logo. A girl on the right wears a white shirt and a blue lanyard. A boy in the background has his arm around the girl on the right.

# Thank you!

[www.seattleschools.org](http://www.seattleschools.org)



School Name	Tech Resource Center	Meal Pick Up Site	Childcare Site	Future School-Based Health Center
Adams Elementary		X	X	
Aki Kurose Middle School	X	X		X
Alki Elementary				
Arbor Heights Elementary		X	X	
B.F. Day Elementary		X		
Bailey Gatzert Elementary	X	X	X	X
Ballard High School				X
Beacon Hill International School		X	X	X
BRIDGES Transition				
Broadview-Thomson K-8 School		X	X	
Bryant Elementary		X	X	
Cascade Parent Partnership				
Cascadia Elementary				
Catharine Blaine K-8 School		X	X	
Cedar Park Elementary		X		
Chief Sealth International High School	X	X		X
Cleveland STEM High School				X
Concord International School	X	X	X	
Daniel Bagley Elementary			X	
Dearborn Park International School			X	X
Denny International Middle School		X		X
Dunlap Elementary				
Eagle Staff Middle School		X		X
Eckstein Middle School		X		
Emerson Elementary			X	
Fairmount Park Elementary				
Franklin High School		X		X
Frantz Coe Elementary				
Garfield High School				X
Gatewood Elementary			X	
Genesee Hill Elementary				
Graham Hill Elementary		X	X	
Green Lake Elementary				
Greenwood Elementary			X	
Hamilton International Middle School				
Hawthorne Elementary		X	X	
Hazel Wolf K-8 School			X	
Highland Park Elementary		X	X	X
Ingraham International High School				X
Interagency Academy				X
Interagency at KC Youth Service				
Interagency Open Doors				
Jane Addams Middle School				
John Hay Elementary		X		
John Marshall School	X			
John Muir Elementary			X	
John Rogers Elementary				
John Stanford International School			X	

Kimball Elementary			X	
Lafayette Elementary				
Laurelhurst Elementary			X	
Lawton Elementary			X	
Leschi Elementary			X	
Licton Springs K-8 School		X		
Lincoln High School				X
Louisa Boren STEM K-8 School		X	X	
Lowell Elementary		X	X	
Loyal Heights Elementary			X	
Madison Middle School		X		X
Madrona Elementary		X	X	X
Magnolia Elementary			X	
Maple Elementary		X	X	
Martin Luther King Jr. Elementary			X	
McClure Middle School				
McDonald International Elementary			X	
McGilvra Elementary				
Meany Middle School				X
Mercer International Middle School	X	X		X
Middle College High School				
Montlake Elementary				
Nathan Hale High School	X	X		X
North Beach Elementary		X	X	
Northgate Elementary		X	X	
Nova High School				
Olympic Hills Elementary		X		
Olympic View Elementary		X	X	
Orca K-8 School				
Pathfinder K-8 School			X	
Queen Anne Elementary			X	
Rainier Beach High School		X		X
Rainier View Elementary	X	X		
Rising Star Elementary		X		X
Roosevelt High School				X
Roxhill Elementary		X		X
Sacajawea Elementary			X	
Salmon Bay K-8 School			X	
Sand Point Elementary		X	X	
Sanislo Elementary				
Seattle World School		X		X
South Lake High School				
South Shore PK-8 School				
Stephen Decatur Elementary			X	
Stevens Elementary			X	
The Center School				
Thornton Creek Elementary				
Thurgood Marshall Elementary		X		
TOPS K-8 School		X		
View Ridge Elementary				
Viewlands Elementary		X	X	

Washington Middle School				X
Wedgwood Elementary			X	
West Seattle Elementary				X
West Seattle High School				X
West Woodland Elementary			X	
Whitman Middle School				
Whittier Elementary		X	X	
Wing Luke Elementary			X	