



SEATTLE
PUBLIC
SCHOOLS



**BUILDING
FOR
LEARNING**

EDUCATION LEVIES

2019

Capital Programs Annual Report

2019 Capital Programs Report

Capital Levy-Funded Construction Projects

January–December 2019

Prepared by Seattle Public Schools staff

Published May 2020

Cover image: *The new main entrance for Lincoln High School is located next to the administration offices and designed to address landmarks, accessibility, and safety requirements. The glass, at-grade entry is recessed from the prominent historical facade.*

Photo by Ben Benschneider and courtesy of Bassetti Architects

Table of Contents

EXECUTIVE SUMMARY	1
SEATTLE PUBLIC SCHOOLS CAPITAL LEVIES.....	2
ABOUT THE LEVIES.....	2
PAST CAPITAL LEVIES.....	2
CURRENT CAPITAL LEVIES.....	2
CURRENT CAPITAL LEVY SUMMARIES	3
BUILDINGS, TECHNOLOGY, AND ACADEMICS III (BTA III).....	3
BUILDING EXCELLENCE IV (BEX IV)	3
BUILDINGS, TECHNOLOGY, AND ACADEMICS IV (BTA IV)	5
BUILDING EXCELLENCE V.....	6
GRANTS AND OTHER REVENUE.....	7
STATE OF WASHINGTON—DISTRESSED SCHOOL FUNDS.....	7
STATE OF WASHINGTON—DEPARTMENT OF COMMERCE GRANT/SEATTLE CITY LIGHT SOLAR GRANT.....	8
STATE OF WASHINGTON—K-3 CLASS SIZE REDUCTION GRANT.....	9
SCHOOL CONSTRUCTION ASSISTANCE PROGRAM (SCAP)	9
2019 CAPITAL CONSTRUCTION PROJECTS.....	13
SCHOOLS COMPLETED AND OPENED FALL 2019	13
SCHOOLS UNDER CONSTRUCTION DURING 2019	13
SCHOOLS IN PLANNING/DESIGN PHASE DURING 2019.....	13
2019 SUMMER/SMALLER PROJECTS.....	13
SCHOOLS OPENED IN 2019.....	15
SCHOOLS UNDER CONSTRUCTION IN 2019	23
SCHOOLS IN PLANNING IN 2019.....	29
2019 SMALLER/SUMMER BUILDING PROJECTS.....	34
FINANCIAL REPORTS	46

Executive Summary

At Seattle Public Schools, we remain committed to providing an excellent education for every student. Safe, healthy, efficient, and well-maintained schools and support facilities provide a positive environment for students, staff, and community members.

Our buildings require consistent, thoughtfully applied financial resources to maximize their lifecycle. Much of the funding to construct, maintain, and renovate Seattle Public Schools' educational facilities comes directly from Seattle residents through voter-approved capital levies. As we rebuild, modernize, and update our buildings, we focus on designing schools to meet the needs of a rigorous educational program that is focused on educational equity for all of our students. Careful selection of materials and stringent criteria for energy usage reduces the cost of ownership, which in turn reduces the costs to local taxpayers over the long term.

Seattle voters have been generous in responding to district requests for fiscal support of our capital needs, approving Building Excellence (BEX) and Buildings, Technology, and Academics (BTA) capital levies since 1995. Successful passage of these capital levies is critical in providing a learning environment that allows staff to focus on positioning students for academic success.

We are grateful for the strong support we receive from the residents of Seattle, the commitment to education by our state legislators, and for the active participation of volunteers in our school communities.

In 2019, Capital Projects and Planning staff focused their efforts on designing, bidding, and building projects identified in the BTA III, BEX IV, and BTA IV capital levies. Staff also spent extensive time planning for the Building Excellence V Capital Levy (BEX V), which was approved by Seattle voters in February 2019. Seattle Public Schools' Board of Directors established the guiding principles for the selection of projects to be included in BEX V. Guiding principles included equity, health and safety, capacity, condition, and educational adequacy.

Two landmarked schools that had been closed for decades and two classroom additions opened in September 2019 to continue to meet the needs of a growing student population. Magnolia Elementary School located in Magnolia and Lincoln High School located in Wallingford were fully modernized to meet the district's educational programs for elementary and secondary schools. Queen Anne Elementary School's permanent capacity was expanded by adding eight classrooms and a new gymnasium, and by relocating and expanding the existing administration area. Ingraham High School's permanent capacity was also expanded with a 20-classroom addition constructed to meet the needs as high school enrollment increases.

Seattle Public Schools Capital Levies

ABOUT THE LEVIES

Voter-approved levies and bonds provide the funding for capital programs at Seattle Public Schools. There are two six-year capital programs: Building Excellence (BEX) and Buildings, Technology, and Academics (BTA). BEX capital funds are used to renew or replace aging buildings with modern, operationally efficient facilities. The BTA capital levy is designed to repair existing building envelope, roof, mechanical, electrical, and life/safety systems (asset maintenance), provide improvements in classroom technology, and make academic and athletic field improvements, including the replacement of synthetic turf fields, implementing track repairs and coatings, and installation of field lights expanding co-curricular and recreational use for our schools and the greater community.

Seattle voters can count on the predictability of the district's long-term fiscal plan that places levy measures for both operations and capital needs on the ballot every three years. BEX and BTA levies are on six-year schedules and alternate every three years. This schedule maintains a level levy rate for capital programs and saves the cost of multiple elections.

PAST CAPITAL LEVIES

\$330 million BEX I Capital Levy approved by the voters in 1995

\$150 million BTA I Capital Levy approved by the voters in 1998

\$398 million BEX II Capital Levy approved by the voters in 2001

\$178 million BTA II Capital Levy approved by the voters in 2004

\$490 million BEX III Capital Bond approved by voters in 2007

CURRENT CAPITAL LEVIES

\$270 million BTA III Capital Levy approved by Seattle voters in 2010

\$694.9 million BEX IV Capital Levy approved by Seattle voters in 2013

\$475.3 million BTA IV Capital Levy approved by Seattle voters in 2016

\$1.4 billion BEX V Capital Levy approved by Seattle voters in 2019

Current Capital Levy Summaries

BUILDINGS, TECHNOLOGY, AND ACADEMICS III (BTA III)

In February 2010, Seattle voters approved the Buildings, Technology, and Academics III Capital Levy (BTA III) to replace the expiring BTA II levy. This six-year, \$270 million levy is paying for projects that benefit every school in the district including many small renovations, major maintenance and improvement projects, technology improvements, and academic projects.

As is true for all BTA capital levies, there were three parts to BTA III: building projects, technology projects, and academic/athletics projects. Most BTA III projects were undertaken during the district's summer breaks from 2011 through 2016. Two projects remain to be completed under BTA III including installation of a fire suppression system at Adams Elementary School and an upgrade to the existing heating and ventilation system and installation of a fire suppression system at Lafayette Elementary School.

While executing the BTA III capital levy program, Seattle Public Schools Capital Projects and Planning staff also sought available grant dollars to lessen the burden on the local taxpayer.

Once the designated levy projects are complete, any cost savings or remaining contingency funds are used for additional capital improvements. These actions help leverage funds provided by Seattle taxpayers to maximize the work that can be done over the life of the levy.

BUILDING EXCELLENCE IV (BEX IV)

The \$694.9 million Building Excellence IV Capital Levy (BEX IV) was approved by more than 72 percent of Seattle voters in February 2013. The six-year levy supports the district's long-range facility plan to upgrade and renovate aging school facilities and to address enrollment growth. BEX IV Capital Levy funds were collected from 2014 through 2019. Projects may continue after the levy expires due to scheduling, but no additional funds are collected.

The BEX IV levy continues the work to replace or modernize district buildings, infrastructure, and technology that began with previous levies. It focused on addressing student enrollment growth through the replacement or modernization of 17 school facilities and addressing earthquake and safety issues, infrastructure improvements, and major preventive maintenance needs throughout the school district.

The online [Report to the Community](#) provides details on how the district has fulfilled the promises made in BEX IV.

BEX IV Major Building Projects

The 17 major building projects will result in new schools, replacement schools, or modernized schools. By replacing or renovating school buildings, SPS is not just creating better teaching and learning environments; these projects also reduce the maintenance backlog by updating or replacing aging infrastructure.

- Addams (Jane Addams) Middle School: Modernization to open as a comprehensive middle school. Opened fall 2014. Phased modernization completed in summer 2017.
- Arbor Heights Elementary: Construction of replacement school. Opened fall 2016.

- Bagley (Daniel Bagley) Elementary: Modernization of the existing historic school and construction of a 12-classroom and gymnasium addition to increase school capacity. Projected opening fall 2020.
- Cascadia Elementary: Construction of a new elementary school. Opened fall 2017.
- Eagle Staff (Robert Eagle Staff) Middle School: Construction of new school to house a comprehensive middle school. Opened fall 2017 with one wing dedicated to Licton Springs K-8 option school.
- Fairmount Park Elementary: Modernization and addition to open as attendance area elementary school. Opened Fall 2014.
- Genesee Hill School: Construction of a replacement school on the Genesee Hill site. Opened Fall 2016 as the new home of the former Schmitz Park Elementary.
- Lincoln High School: Modernization of the existing historic school to open as a new attendance area high school. Opened Fall 2019.
- Loyal Heights Elementary: Modernization of the existing historic school and construction of a classroom, gymnasium, and multi-purpose room addition. Opened Fall 2018.
- Luke (Wing Luke) Elementary: Construction of a replacement school. Projected opening, Fall 2021.
- Mann (Horace Mann) — Nova High School at Horace Mann: Modernization of the existing historic school and construction of classroom addition. Opened Fall 2015.
- Meany Middle School: Modernization to open as a new comprehensive middle school. Opened Fall 2017.
- Minor (T.T. Minor) School — Seattle World School at T.T. Minor: Modernization of the existing school and construction of a multi-purpose room and kitchen addition. Opened Fall 2016.
- Olympic Hills Elementary: Construction of a replacement school. Opened Fall 2017.
- Pinehurst School — Hazel Wolf K-8 at Pinehurst School: Construction of a replacement school on the Pinehurst site. Opened Fall 2016.
- Queen Anne Elementary: Construction of an eight-classroom addition and new gymnasium. Opened Fall 2019.
- Thornton Creek Elementary: Construction of a new elementary school. Opened Fall 2016.

BEX IV Other Construction Projects

- | | |
|--|---|
| • Seismic improvements at 37 schools | • Roofing work at five schools |
| • Lunchroom additions at Green Lake Elementary and McGilvra Elementary | • Field and/or track upgrades at four schools |
| • New science labs at four schools | • Planning for a downtown school |

BUILDINGS, TECHNOLOGY, AND ACADEMICS IV (BTA IV)

The six-year, \$475.3 million Buildings, Technology, and Academics IV Capital Levy (BTA IV) was approved by voters in 2016. Seattle Public Schools will receive these levy funds from 2017 through 2022. Projects may continue after the levy expires due to scheduling, but no additional funds will be collected.

BTA IV supports the district's long-range plans to upgrade and renovate aging school facilities and to address enrollment growth. As with previous BTA levies, the three parts to BTA IV include: building projects (\$335.4 million), technology projects (\$104.7 million), and academic/athletics projects (\$35.2 million).

Buildings

The buildings component includes four major projects that provide additional capacity to address increasing student enrollment growth. It also includes projects that provide safety and security improvements and maintain the physical integrity of the district's school buildings.

Major capacity projects

- Hughes (E.C. Hughes) School — Roxhill Elementary at E.C. Hughes: Modernization of the existing school to house Roxhill Elementary. Opened Fall 2018.
- Ingraham High School addition: Construction of a two-story 20-classroom addition, and selective modifications, earthquake safety upgrades, and reroofing of existing buildings. Opened Fall 2019.
- Magnolia School: Modernization of the existing historic school and construction of a classroom and gymnasium addition to open as an elementary school. Opened Fall 2019.
- Webster School: Modernization of the existing historic school and construction of a gymnasium addition to open as a school. Opens Fall 2020.

Other construction projects

Safety and security projects, building systems improvements, exterior renovations and roof replacements, and major preventive maintenance are some of the areas funded through the building portion of BTA IV.

Technology

Technology projects make strategic investments in technology to support learning and teaching in the classrooms, to deliver services to students, teachers, staff, and families, and to improve efficiency in business processes.

Academics/Athletics

Academic projects allow the district to make improvements to the way student services are delivered and enhance the learning environment. Field and lighting projects are included in recognition that athletic programs improve student participation and increase options for learning.

BUILDING EXCELLENCE V

The \$1.4 billion Building Excellence V Capital Levy (BEX V) was approved by more than 70 percent of Seattle voters in February 2019. The six-year levy supports the district's long-range facility plan to upgrade and renovate aging school facilities and to address enrollment growth. BEX V Capital Levy funds are collected from 2020 through 2025. Projects may continue after the levy expires due to scheduling, but no additional funds are collected. BEX V continues the work to replace or modernize district buildings, infrastructure, and technology that began with previous levies. It allows the district to address earthquake and safety issues, capacity needs, building condition and infrastructure improvements, and major preventive maintenance needs throughout the school district.

Selection of the schools adhered to the requirements identified in Board Policy 6901 and the Guiding Principles adopted by the Board on May 9, 2018. Eight schools will either be replaced or modernized, with an additional 72 schools receiving needed repairs to their site, playgrounds, building envelopes, roofs, mechanical, electrical, fire alarms, intercom and/or security systems. All schools within the district will receive technology upgrades.

Major Projects

Alki Elementary: Replacement of school building. Estimated opening, Fall 2025.

Kimball Elementary: Replacement of school building. Estimated opening, Fall 2023.

Kurose, Aki Middle School: Design/planning only in preparation for future replacement.

Mercer International Middle School: Replacement of school building. Estimated opening, Fall 2025.

Montlake Elementary: Major modernization and addition. Estimated opening, Fall 2025.

Northgate Elementary: Replacement of school building. Estimated opening, Fall 2023.

Original Van Asselt: Addition to serve as interim middle school. Estimated opening, Fall 2023.

Rainier Beach High School: Replacement of school building, retaining performing arts center. Estimated opening, Fall 2025.

Rogers (John Rogers) Elementary: Replacement of school building. Estimated opening, Fall 2025.

Sacajawea Elementary: Design/planning only in preparation for future replacement.

Viewlands Elementary: Replacement of school building. Estimated opening, Fall 2023.

West Seattle Elementary: Classroom addition. Estimated opening, Fall 2022.

Grants and Other Revenue

By applying for grants, reimbursements, and other available funding sources, Seattle Public Schools reduces the amount of expenditure from local capital levy funds, which in turn allows for additional work to be completed. Many grants require matching funds from the district.

Distressed Schools Funds, Department of Commerce Grants, and Seattle City Light Solar Grants are earmarked solely for the project awarded.

Projects funded by Distressed School Funds, Department of Commerce Grants, and Seattle City Light Grants are initially funded with local Seattle Public Schools capital dollars and are then reimbursed until 100 percent of the available grant funds are collected.

STATE OF WASHINGTON—DISTRESSED SCHOOL FUNDS

Distressed Schools Funds are earmarked solely for the project awarded. Projects funded by Distressed School Funds are initially funded by Seattle Public Schools capital dollars and then are reimbursed with Washington State Distressed Funds until 100 percent of the available grant funds are collected.

Cedar Park Elementary School: Boys and girls restrooms. Landmarked building; review by City of Seattle Landmarks Preservation Board required.

- Funding amount \$586,000.
- Awarded 2017-19 biennium.

Coe Elementary School: Six-classroom addition with open flex areas and offices.

- Funding amount \$7,900,000.
- Awarded 2017-19 biennium.

Eckstein Middle School: Exterior solar shades.

- Funding amount \$500,000.
- Awarded 2017-19 biennium.
- Claims in process.

Hughes (E.C. Hughes) Elementary School: Modernization to open.

- Funding amount \$4,952,000.
- Awarded 2015-17 biennium.
- Funds have been fully claimed and received.

Leschi Elementary School: Four-classroom addition.

- Funding amount \$4,400,000.
- Awarded 2019-21 biennium.

Madison Middle School: Eight-classroom addition.

- Funding amount \$10,500,000.

- Awarded 2019-21 biennium.

Magnolia Elementary School, Phase I: Modernization and addition to open.

- Funding amount \$5,048,000.
- Awarded 2015-17 biennium.
- Funds have been fully claimed and received.

Magnolia Elementary School, Phase II: Six-classroom addition.

- Funding amount \$4,300,000.
- Awarded 2017-19 biennium.

North Beach Elementary School: Master planning/design.

- Funding amount \$3,100,000.
- Awarded 2019-21 biennium.

Rogers Elementary School: Master Planning/Design. Master planning efforts complete. Project included in Building Excellence (BEX) V Capital Levy to replace existing school.

- Funding amount \$200,000.
- Awarded 2017-19 biennium.

Viewlands Elementary School: 14-classroom addition. Mahlum Architects selected as A/E team. Project included in Building Excellence (BEX) V Capital Levy to replace existing school.

- Funding amount \$8,500,000.
- Awarded 2017-19 biennium.

West Woodland Elementary School: 12-classroom/multi-purpose room addition.

- Funding amount \$6,000,000.
- Awarded 2017-19 biennium.

STATE OF WASHINGTON—DEPARTMENT OF COMMERCE GRANT/SEATTLE CITY LIGHT SOLAR GRANT

Department of Commerce Grants and Seattle City Light (SCL) solar grants are earmarked solely for the project awarded.

Projects funded by Department of Commerce grants and Seattle City Light grants are initially funded with Seattle Public Schools capital dollars and are then reimbursed by the grant until the grant is 100 percent collected.

Arbor Heights Elementary School: 100 kW photovoltaic array.

- Grant funding amount \$83,333/\$25,000, awarded 2015-17 biennium.
- Department of Commerce grant fully claimed and received; SCL grant in process.

Ballard High School: 100 kW photovoltaic array.

- Grant funding amounts \$83,333/\$25,000, awarded 2015-17 biennium.
- Department of Commerce grant fully claimed and received; SCL grant in process.

Gatzert (Bailey Gatzert) Elementary School: 100 kW photovoltaic array.

- Grant funding amounts \$83,333/\$25,000, awarded 2015-17 biennium.
- Department of Commerce grant fully claimed and received; SCL grant in process.

South Shore K-8 School: 100 kW photovoltaic array.

- Grant funding amounts \$83,333/\$25,000, awarded 2015-17 biennium.
- Department of Commerce grant fully claimed and received; SCL grant in process.

Thornton Creek Elementary School: 100 kW photovoltaic array.

- Grant funding amounts \$83,333/\$25,000, awarded 2015-17 biennium.
- Department of Commerce grant fully claimed and received; SCL grant in process.

Wolf (Hazel Wolf) K-8 School at Pinehurst: 100 kW photovoltaic array.

- Grant funding amounts \$83,333/\$25,000, awarded 2015-17 biennium.
- Department of Commerce grant fully claimed and received; SCL grant in process.

STATE OF WASHINGTON – K-3 CLASS SIZE REDUCTION GRANT

The districtwide K-3 Class Size Reduction (CSR) grant is utilized solely to create smaller K-3 class sizes. Total Seattle Public Schools K-3 classrooms created to date is 65.

OSPI CSR Grant funding amount \$10,000,000, awarded 2015-17 biennium.

- Claims submitted/received from OSPI \$760,828 for 2016-2017 school year.
- Claims submitted/received from OSPI \$437,647 for 2017-2018 school year.
- Claims submitted/received from OSPI \$617,969 for 2018-2019 school year.
- Claims submitted/received from OSPI \$148,384 for 2019-2020 school year.
- Anticipate submitting claim to OSPI for \$1,000,000 for Daniel Bagley Elementary School in fiscal year 2020-2021.
- Anticipate submitting claims to OSPI for \$2,500,000 for West Woodland Elementary School and \$4,400,000 for West Seattle Elementary School in fiscal year 2021-2022.

SCHOOL CONSTRUCTION ASSISTANCE PROGRAM (SCAP)

The School Construction Assistance Program (SCAP) provides funding assistance for Washington state K-12 facility planning, new construction, and modernizations. It is the Office of Superintendent of Public Instruction's (OSPI's) largest capital grant program.

Capital projects eligible for SCAP funding are initially funded with Seattle Public Schools capital dollars and are then reimbursed with OSPI dollars until 100 percent collected.

SCAP BEX IV Projects

Mann (Horace Mann) Elementary School (now houses Nova High School): School opened Winter 2015.

- Funding amount \$1,121,854, awarded 2013-15 biennium.
- Funds have been fully claimed and received.

Genesee Hill Elementary School: School opened Fall 2016.

- Funding amount \$1,663,814, awarded 2013-15 biennium.
- Funds have been fully claimed and received.

Cedar Park Elementary School: Interim school opened Fall 2015.

- Funding amount \$1,439,487, awarded 2013-15 biennium.
- Funds have been fully claimed and received.

Arbor Heights Elementary School: School opened Fall 2016.

- Funding amount \$2,559,706, awarded 2013-15 biennium.
- Funds have been fully claimed and received.

Wolf (Hazel Wolf) K-8 School (formerly Pinehurst): School opened Fall 2016.

- Funding amount \$1,608,968, awarded 2013-15 biennium.
- Funds have been fully claimed and received.

Minor (T.T. Minor) Seattle World School (now houses Seattle World School: School opened Fall 2016.

- Funding amount \$2,523,937, awarded 2015-17 biennium.
- Funds have been fully claimed and received.

Eagle Staff Middle School (formerly Wilson Pacific): School opened Fall 2017.

- Funding amount \$4,699,658, awarded 2015-17 biennium.
- Funds have been fully claimed and received.

Olympic Hills Elementary School: School opened Fall 2017.

- Funding amount \$1,835,414, awarded 2015-17 biennium.
- Funds have been fully claimed and received.

Meany Middle School: School opened Fall 2017.

- Funding amount \$4,478,760, awarded 2015-17 biennium.
- Funds have been fully claimed and received.

Loyal Heights Elementary School: School opened Fall 2018.

- Funding amount \$1,922,873, awarded 2017-19 biennium.
- Claims in process.

Lincoln High School: School opened Fall 2019.

- Funding amount \$9,113,749, awarded 2017-19 biennium.
- Claims in process.

Bagley (Daniel Bagley) Elementary School: School scheduled to open Fall 2020.

- Estimated funding amount \$1,538,270; funds not awarded to date.
- OSPI Form D-10 has been submitted.

Luke (Wing Luke) Elementary School: School scheduled to open Fall 2021.

- Estimated funding amount \$1,237,751; funds not awarded to date.
- OSPI Form D-10 has been submitted.

SCAP BTA IV Projects

Hughes (E.C. Hughes) Elementary School (Roxhill Elementary): School opened Fall 2018.

- Funding amount \$1,979,116, awarded 2017-19 biennium.
- Claims in process.

Magnolia Elementary School: School opened Fall 2019.

- Funding amount \$2,299,804, awarded 2017-19 biennium.
- Claims in process.

SCAP BEX V Projects

Kimball Elementary School: School scheduled to open Fall 2023.

- Estimated funding amount \$1,877,765; funds not awarded to date.
- OSPI Form D-3 has been submitted.

Northgate Elementary School: School scheduled to open Fall 2023.

- Estimated funding amount \$1,911,661; funds not awarded to date.
- OSPI Form D-3 has been submitted.

Viewlands Elementary School: School scheduled to open Fall 2023.

- Estimated funding amount \$1,471,019; funds not awarded to date.
- OSPI Form D-3 has been submitted.

Alki Elementary School: School scheduled to open Fall 2025.

- Estimated funding amount \$2,051,220; funds not awarded to date.
- OSPI Form D-3 has not been submitted.

Montlake Elementary School: School scheduled to open Fall 2025.

- Estimated funding amount \$967,287; funds not awarded to date.
- OSPI Form D-3 has not been submitted.

Mercer International Middle School: School scheduled to open Fall 2025.

- Estimated funding amount \$5,527,813; funds not awarded to date.
- OSPI Form D-3 has not been submitted.

Rainier Beach High School: School scheduled to open Fall 2025.

- Estimated funding amount \$8,501,081; funds not awarded to date.
- OSPI Form D-3 has not been submitted.

Rogers, John Elementary School: School scheduled to open Fall 2025.

- Estimated funding amount \$1,635,842; funds not awarded to date.
- OSPI Form D-3 has not been submitted.

2019 Capital Construction Projects

Capital levy-funded work was underway or completed at the following schools in 2019. Major projects continue over multiple years. Smaller projects, primarily building systems repairs and replacements, are usually scheduled for summer months to reduce disruption to teaching and learning.

SCHOOLS COMPLETED AND OPENED FALL 2019

- Ingraham High School classroom addition
- Lincoln High School
- Magnolia Elementary School
- Queen Anne Elementary School classroom and gymnasium addition

SCHOOLS UNDER CONSTRUCTION DURING 2019

- Bagley (Daniel Bagley) Elementary
- Luke (Wing Luke) Elementary School
- Webster School

SCHOOLS IN PLANNING/DESIGN PHASE DURING 2019

- Coe (Frantz Coe) Elementary School classroom addition
- Kimball Elementary School
- Magnolia Elementary, phase II classroom addition
- Northgate Elementary School
- Rainier Beach High School
- Van Asselt Interim Site
- Viewlands Elementary School
- West Seattle Elementary School
- West Woodland Elementary School

2019 SUMMER/SMALLER PROJECTS

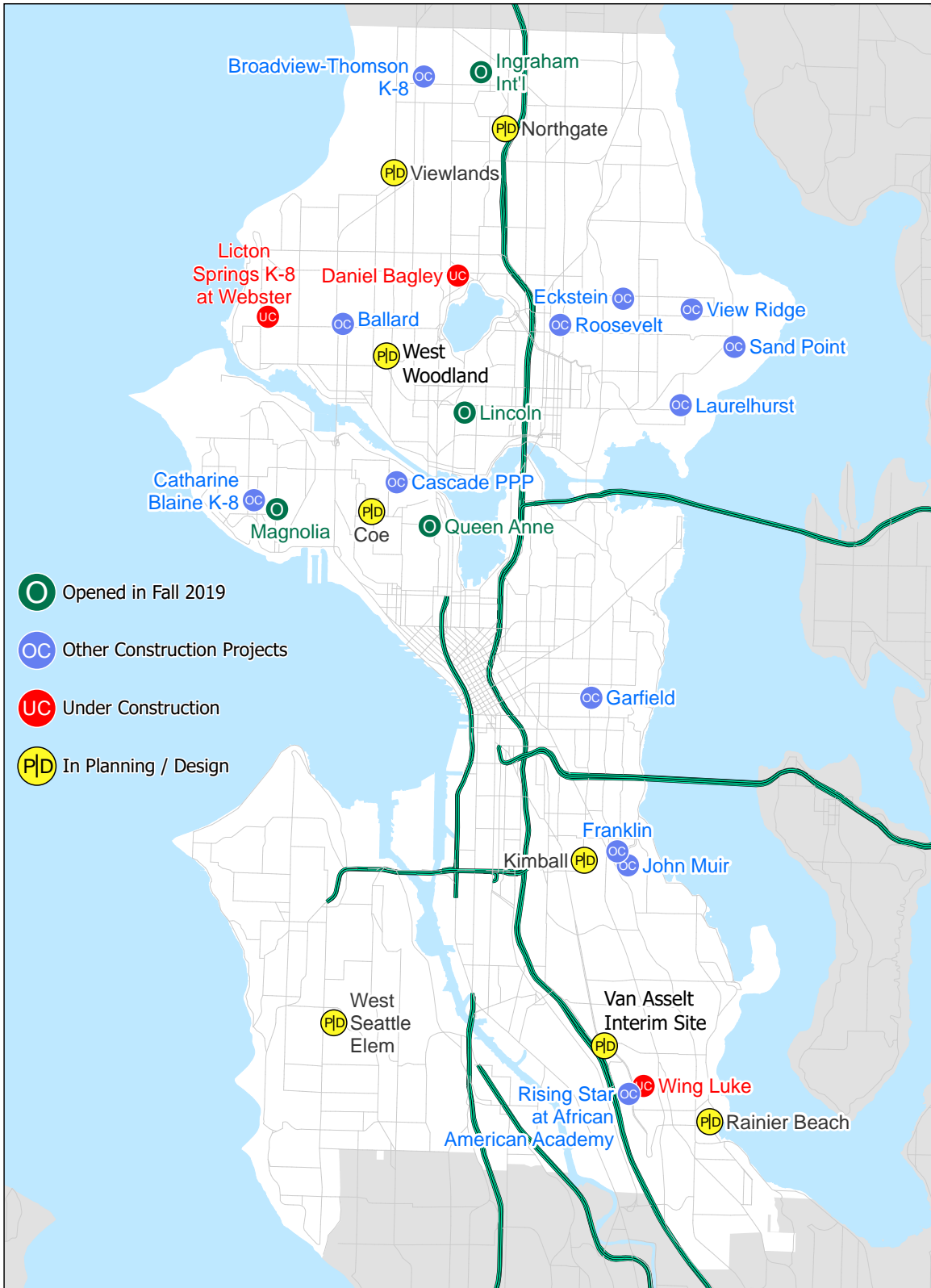
- | | |
|---|---|
| • African American Academy (Rising Star at AAA) | • Laurelhurst Elementary School |
| • Ballard High School | • Muir (John Muir) Elementary School |
| • Blaine (Catharine Blaine) K-8 School | • North Queen Anne (Cascade Parent Partnership Program) |
| • Broadview-Thomson K-8 School | • Roosevelt High School |
| • Eckstein Middle School | • Sand Point Elementary School |
| • Franklin High School | • View Ridge Elementary School |
| • Garfield High School | • Capacity Management Projects |

2020



2019 Capital Projects in Progress / Completed

Map Data:
2019-20
Last updated:
3/12/2020



SCHOOLS OPENED IN 2019

Ingraham High School — Addition



Scope

The main Ingraham High School building and the adjacent original auditorium and gymnasiums were built in 1959. To date, the school building has had various remodeling projects completed, including a classroom addition in 2011.

This project constructed a new, two-story classroom addition of approximately 46,000 square feet adjacent to the existing building 100. The project also included selective modernization or remodeling of portions of building 100; earthquake safety improvements to buildings 100 and 300, and the gymnasium; and replacing the roof on building 100 and part of the gymnasium. Onsite and offsite utilities and limited site development work were also included in the project.

A ribbon-cutting ceremony was held on Thursday, August 29, 2019, to celebrate completion of the addition.

Building Size

The 46,000-square-foot addition increased the total square footage of the school to 236,000. The addition provides capacity for up to 500 additional students, increasing school capacity to 1,696. It includes 18 classrooms, two new science labs, a makerspace, a new entry, student commons spaces, group learning spaces, and offices.

New Building Opened

Fall 2019

School Design

Integrus Architecture

General Contractor Construction Management

Shiels Oblatz Johnsen, Inc.

Construction

Cornerstone General Contractors, Inc.

Life-to-Date Expenditures

\$36,685,694

Project Budget and Funding Source(s)

\$34,158,508 (BTA IV); \$5,727,417 (BEX IV); \$968,760 (BTA III)



Learning breakout space



Classroom in addition

Lincoln High School — Modernization to open as attendance area high school



Scope

Lincoln High School was originally constructed in 1906, and subsequently expanded in 1914 and 1931. In addition, a gym, auditorium, music, and vocational wing were added to the east side of the site in 1959. The original west-side masonry building façade, interior stairwells, and site have been designated as historical landmarks by the City of Seattle Landmarks Preservation Board. The school was closed in 1981 and reopened in 1998 as an interim site for many school communities throughout the district.

By repurposing and modernizing the existing Lincoln School campus, the district was able to open Lincoln as a new comprehensive high school. The project included new classrooms, food service and cafeteria space; roof replacement; new energy-efficient systems; and seismic, mechanical, and electrical systems upgrades to the west-side four-story historic landmarked masonry buildings. Additions for a new entry, custodial storage, and mechanical spaces were also included.

Minimal upgrades were made to the 1959 gymnasium and auditorium buildings on the east side of campus. Additional funding is included in BEX V to modernize these buildings.

A ribbon-cutting ceremony was held on Tuesday, Sept. 3, 2019, to celebrate the opening of. This is the first high school opened in the district in more than 50 years. In addition to students and families, Lincoln alumni turned out to cheer the return of the Lincoln Lynx and welcome new families to the Lincoln community.

Building Size

257,200 square feet for up to 1,600 students in grades 9–12

The modernized high school includes 48 classrooms, four career and technical education labs, 10 science labs, a special education suite with occupational and physical therapy rooms, two multi-purpose spaces, a library, a commons/cafeteria, a gymnasium, and a theater.

School Opened

Fall 2019

School Design

Bassetti Architects, Inc.

General Contractor Construction Management

CBRE | Heery

Construction

Lydig Construction

Life-to-Date Expenditures

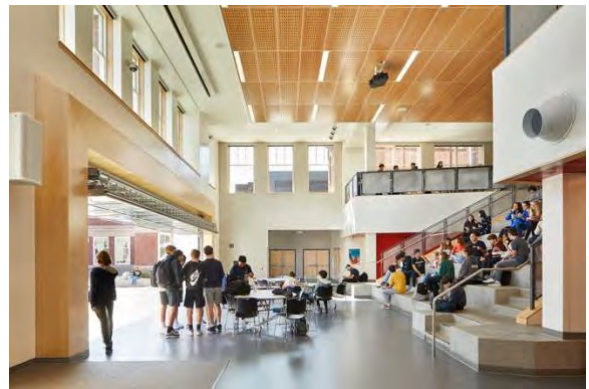
\$95,198,469

Project Budget and Funding Source(s)

\$19,238,051 (BEX IV); \$82,067,506 (BTA IV)



Library located in north wing



Commons/cafeteria open to courtyard

Magnolia Elementary School — Modernization and addition to open as attendance area elementary school



Scope

Magnolia School was originally constructed in 1927 and subsequently expanded in 1931, 1941, and 1969. The building and site have been designated as a historical landmark by the City of Seattle's Landmarks Preservation Board. The school was closed in 1984 and used as a temporary site from 1987–2004.

The existing school was modernized, and new classroom and gymnasium wings were built. The school opened in Fall 2019 as a new attendance area elementary to provide needed capacity in the Magnolia area.

Existing classroom windows were replaced with new thermally efficient windows, which replicate the historic aesthetic. Given the landmark designation of the building, many of the existing interior features, such as the main entry hall, the lunchroom/auditorium, classroom casework and trim, were refurbished to preserve the school's historic character.

The school includes a multi-level playground designed to provide outdoor learning opportunities as well as play and is fully ADA-compliant.

A ribbon-cutting ceremony was held on Thursday, August 29, 2019, to celebrate the opening. In addition to students, families, and neighbors, many school alumni attended.

Building Size

71,000 square feet including 40,300-square-foot historical building and 30,800-square-foot additions to house up to 490 elementary students.

The modernized school includes three kindergarten classrooms with toilets; 15 classrooms for grades 1-5; two classrooms for art and music; two classrooms for special education; a resource room; three learning commons; rooms for Access, Focus, and occupational/physical therapy; a gymnasium; a lunchroom/commons; and administrative spaces.

School Open

Fall 2019

School Design

Mahlum Architects, Inc.

Construction Management

Seattle Public Schools

Construction

FORMA Construction Company

Life-to-Date Expenditures

\$39,052,765

Project Budget and Funding Source(s)

\$34,548,493 (BTA IV, School Construction Assistance Program); \$5,048,000 (Distressed Schools Grant)



Historic lunchroom



Library on floor 2 of the new classroom wing

Queen Anne Elementary School — Addition



Scope

This project constructed an addition to the school's 1922 brick building, allowing the school to better meet the needs of the students, staff and teachers. The historic wood building was not included in the project but remains part of the school.

The addition provides a full-size gymnasium, new classrooms, and one of the first dedicated elementary makerspaces in the state. There are four kindergarten classrooms and three classrooms for grades 1-5 in the addition, and one new classroom in the existing building. The addition also houses the school's new main entry, providing a secure entrance controlled by staff. Locating the entrance and the school office in the new addition put it at the heart of the school, providing a closer connection to the students and teachers housed in the historic wood building. The previous administrative offices were renovated to create an additional classroom in the existing building.

A ribbon-cutting ceremony was held on Tuesday, September 3, 2019. Queen Anne Elementary students, families, and staff were excited to return to the school from their interim site.

Building Size

The addition provides 19,975 square feet and allows the school to accommodate 170 additional elementary students for a total of 500.

School Opened

Fall 2019

School Design

Mahlum Architects, Inc.

Construction Management

Seattle Public Schools

Construction

Hensel Phelps Construction

Life-to-Date Expenditures

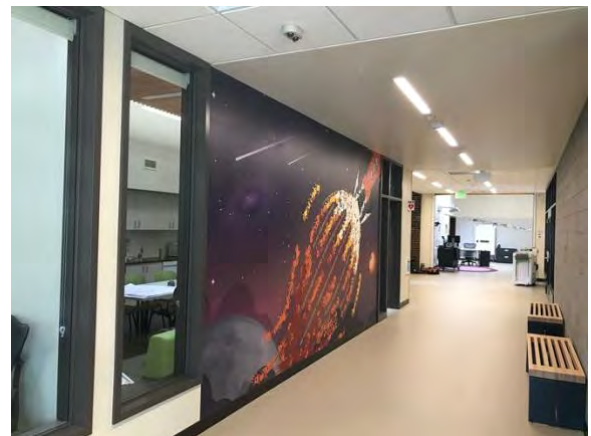
\$18,807,544

Project Budget and Funding Source(s)

\$19,315,405 (BEX IV)



New entrance in center of campus



Corridor between new administration office and new gymnasium

SCHOOLS UNDER CONSTRUCTION IN 2019

Bagley (Daniel Bagley) Elementary: Modernization/addition



Steel erected for classroom addition



Roof framing and precast concrete walls for the new gymnasium

Scope

The building and site have been designated historical landmarks by the City of Seattle's Landmarks Preservation Board. The 1930-era building is undergoing a modernization. An eight-classroom addition is being built as well as a new, larger gymnasium that is more than double the size of the existing gym.

The completed project will include up to 31 teaching stations, larger administrative support areas, a new gymnasium, as well as a permanent music classroom located in the historic landmark building. In addition, there will be several small group and larger learning commons spaces to accommodate flexible learning environments for various sizes of student groups.

Modernization of the existing historic building includes seismic and accessibility upgrades, plumbing, HVAC and electrical upgrades for good air, water and temperature control, and improved energy efficiency. Some interior walls will be relocated to allow for program improvement while maintaining the historic character of the building.

Construction began once school let out for summer in June 2019. By the end of the calendar year, precast concrete walls were erected for the new gym and steel roof joists were in place. The classroom addition started to take shape with concrete footings and stem walls complete and structural steel work underway.

Building Size

The school's total size will be approximately 58,500 square feet for up to 500 students. It will consist of the 39,000 square-foot historic elementary, the 13,000 square-foot classroom addition, and the 6,500 square-foot gymnasium addition.

School Opens

Fall 2020

School Design

Miller Hayashi Architects

General Contractor Construction Management

Shiels Oblatz Johnsen, Inc.

Construction

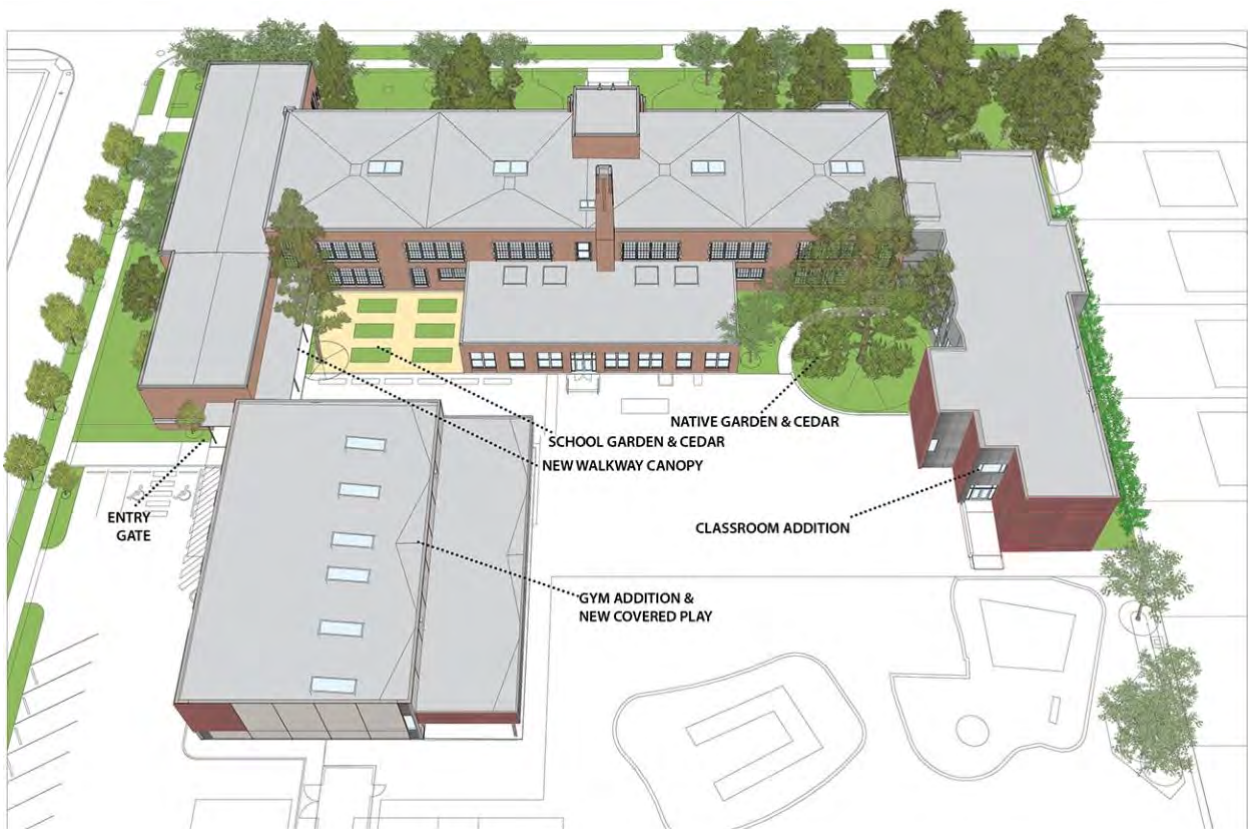
Lydig Construction

Life-to-Date Expenditures

\$11,987,180

Project Budget and Funding Source(s)

\$24,742,216 (BEX IV); \$11,793,952 (BTA IV); \$2,808,243 (BTA III); \$1,000,000 (CSR Grant)



Architect's drawing showing historic building, classroom addition, and new gymnasium

Luke (Wing Luke) Elementary — New Replacement School



Building A main entrance ceiling framing and exterior soffit under construction



Building B metal stud framing underway with future library in background

Scope

The previously existing Wing Luke Elementary School is being replaced with a new school building, which was designed in close collaboration with the school community. It will celebrate and facilitate education with a modern school designed to 21st century standards.

Classrooms will be organized around flexible learning commons, which include presentation technology, marker-board wall surfaces, exterior windows, and a variety of seating options to allow group projects or independent work. With the interactive arrangement of educational spaces, teaching and learning can take many forms to meet the needs of students.

The school will consist of three connected buildings. Building A will house the main entrance, and administrative spaces, with classrooms on the second floor. Building B will be a two-story classroom wing that includes the library. Building C will include the commons/lunchroom, kitchen, stage, and gymnasium.

The school and grounds will be integrated so the inside learning environment flows seamlessly outdoors, where learning opportunities include a central courtyard and outdoor areas for play and education. The core facilities (administrative, commons, gym) are sized to support 650 students, and the campus Master Plan includes a design for a 150-student addition.

Phase II construction began in the summer of 2019. Phase I, existing building demolition, site clearing, and site preparation, was completed the previous year. By the end of 2019, structural steel, exterior metal studs, and sheathing were completed at building A. Concrete was placed for the second-floor library, breezeway, and mechanical penthouse in building B. Steel erection continued at the commons in building C.

Building Size

The new 82,000-square-foot building is designed for up to 500 students. It will include six classrooms with toilets for kindergarten or grade 1, 16 classrooms for grades 1-5, four special education classrooms, one resource room, one occupational/physical therapy space, an art room, a music classroom, two early learning spaces, four learning commons, small group learning areas, a gymnasium, a library, a lunchroom/commons, and administration spaces.

School Opens

Fall 2021

School Design

NAC Architecture

General Contractor Construction Management

CBRE | Heery

Construction

Phase I: Rhine Demolition

Phase II: Jody Miller Construction

Life-to-Date Expenditures

\$15,528,687

Project Budget and Funding Source(s)

\$46,455,224 (BEX IV); \$1,058,460 (BTA III)

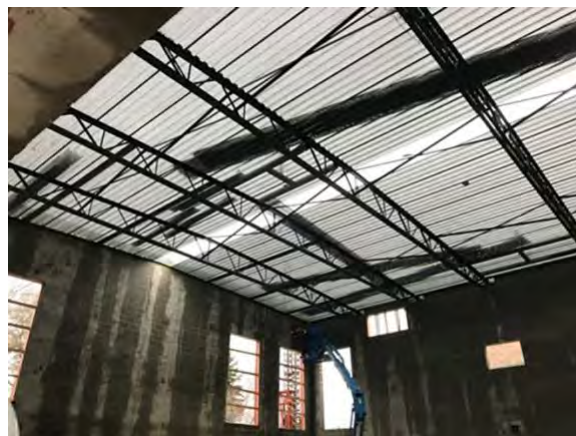


Architects rendering of Wing Luke main entry off Kenyon

Webster School: Modernization/addition to house Licton Springs K-8



Restoration of window lintels underway



Gymnasium concrete masonry unit walls complete and metal acoustical decking started

Scope

Constructed in 1908, Webster School served as an elementary school through 1979. An addition, built in 1930, added an auditorium, library, industrial arts room, and play courts. The building and site have been designated historical landmarks by the City of Seattle's Landmarks Preservation Board.

The Nordic Heritage Museum leased the building in 1980 and remodeled many rooms to house exhibits. The museum moved to a new facility in 2018. This project modernizes the historic building and constructs an addition to bring it back into service for district use as a school.

As part of the modernization, the district is making earthquake safety improvements, replacing and updating existing building systems, and constructing a new gymnasium. New technology systems are being added to meet district technical standards.

In 1997, Seattle Parks and Recreation opened Webster Park on the western portion of the Webster School site. In 2009, SPS sold that portion of the property to the city. A joint use agreement is in place, and the district plans to schedule use of the park during the school day to support recess and physical education programs.

Construction began in spring 2019. By the end of the year, extensive seismic work, metal stud framing, insulation and sheathing, wallboard, and roof installation were in progress in the historic building. Mechanical, electrical, plumbing, fire piping, conduit, and ductwork were being installed. The concrete masonry unit walls for the new gymnasium were completed and masonry veneer was being installed. The steel trusses were in place and preparations were being made for roofing to commence in early 2020.

The district has announced that Licton Springs K-8 will occupy the renovated building.

Building Size

Once completed, the school will total 52,500 square feet: 44,800 square feet in the historical building plus a 7,700-square-foot addition for the new gym and entrance.

The school is designed for up to 360 students in grades K-8 and includes three kindergarten classrooms with toilets.

School Opens

Fall 2020

School Design

TCF Architecture

Construction Management Firm

Seattle Public Schools

Construction

BNBuilders

Life-to-Date Expenditures

\$18,578,337

Project Budget and Funding Source(s)

\$39,837,094 (BTA IV)



Architects rendering of new entrance between historic building and gym addition

SCHOOLS IN PLANNING IN 2019

Coe Elementary School: Classroom Addition

Scope

This project constructs a six-classroom addition to the existing 75,214-square-foot building to support enrollment growth on Queen Anne Hill.

By the end of 2019, work was underway on construction documents and the SEPA threshold determination appeal hearing had been held. Construction is expected to begin in Summer 2020.

Project complete

Fall 2021

School Design

Mahlum Architects, Inc.

Life-to-date expenditures

\$661,053

Project budget and funding source(s)

\$7,900,000 (Distressed Schools Grant)

Kimball Elementary School: Replacement

Scope

The existing Kimball Elementary School will be demolished. Construction of a new, two-story school building will provide permanent space for up to 650 students in grades PreK through 5. The new school will be approximately 95,000 square feet.

By the end of 2019, the School Design Advisory Team (SDAT) had formed and meetings were taking place. Schematic designs were in development. Construction is expected to begin Summer 2021.

Project complete

Fall 2023

School Design

NAC Architecture

Life-to-date expenditures

\$166,425

Project budget and funding source(s)

\$84,563,883 (BEX V, School Construction Assistance Program)

Magnolia Elementary, Phase II: Classroom Addition

Scope

In 2019, the modernized existing school opened with new classroom and gymnasium wings.

A second classroom addition will be added to the newly opened attendance area elementary. It will allow the district to implement state-mandated class-size reductions. The funding for this addition was received after construction began on the original project. Construction is scheduled to begin Summer 2020.

Project complete

Fall 2021

School Design

Mahlum Architects, Inc.

Life-to-date expenditures

\$382,731

Project budget and funding source(s)

\$4,300,000 (Distressed Schools Grant)

Northgate Elementary School: Replacement

Scope

The existing Northgate Elementary School will be replaced with a new school building. As with all schools that were built 25 years ago or more, the district has submitted a landmark nomination for Northgate Elementary to the City of Seattle Landmarks Preservation Board.

By the end of 2019, the School Design Advisory Team (SDAT) process was complete and schematic designs were being refined. Construction is expected to begin summer 2021.

Project complete

Fall 2021

Architect

NAC Architecture

General Contractor Construction Management

Lydig Construction

Life-to-date expenditures

\$217,319

Project budget and funding source(s)

\$88,521,732 (BEX V, School Construction Assistance Program); \$1,750,562 (BEX IV)

Rainier Beach High School: Replacement

Scope

The existing high school will be replaced with a new multi-story high school of approximately 233,700 square feet. When completed, it will provide permanent space for 1,600 students grades 9-12. The project also includes renovation of the existing Performing Arts Center. Students will remain on-site during the phased construction. As with all schools that were built 25 years ago or more, the district has submitted a landmark nomination for Rainier Beach High School to the City of Seattle Landmarks Preservation Board.

By the end of 2019, the predesign phase was underway, managed by Parametrix. An RFP had been issued for architectural and engineering services. Phased construction is expected to begin in summer 2022.

Project complete

Fall 2025

Interim Construction Project Management

Parametrix

Architect

Bassetti Architects, Inc. (selected February 2020)

Life-to-date expenditures

\$4,395

Project budget and funding source(s)

\$237,488,244 (BEX V, School Construction Assistance Program); \$662,182 (BEX IV)

Van Asselt Interim Site: Addition

Scope

The Building Excellence V (BEX V) Capital Levy will fund a new addition to the existing interim site. By increasing the capacity at Original Van Asselt, the district will have an interim site large enough to temporarily house a middle school.

By the end of 2019, the predesign phase had begun. Construction is expected to begin Summer 2021.

Project complete

Fall 2023

School Design

Bassetti Architects, Inc.

General Contractor/Construction Management

Shiels Oblatz Johnson, Inc.

Life-to-date expenditures

\$40,212

Project budget and funding source(s)

\$44,247,436 (BEX V)

Viewlands Elementary School: Replacement

Scope

The existing Viewlands Elementary will be demolished to make way for a new multi-story school building. The new school will be approximately 95,000 square feet and provide permanent classroom space for up to 650 students. The school design will include a secure entry and to be respectful of the surrounding neighborhood. Site improvements will include earthwork and new parking.

By the end of 2019, the School Design Advisory Team (SDAT) process was underway and schematic designs were in progress. Construction is expected to begin Summer 2021.

Project complete

Fall 2023

School Design

Mahlum Architects, Inc.

Life-to-date expenditures

\$109,682

Project budget and funding source(s)

\$79,594,475 (BEX V, School Construction Assistance Program); \$8,500,000 (Distressed Schools Grant)

West Seattle Elementary School: Classroom Addition

Scope

A new, approximately 20,000-square-foot addition will be built to provide 12 new classrooms and two learning commons. Minor modernization will be done to the existing 50,700 square foot school building. The expanded school will provide permanent space for up to 500 students.

By the end of 2019, the School Design Advisory Team (SDAT) process was underway and schematic designs were being developed. Construction is expected to begin Summer 2021.

Project complete

Fall 2022

School Design

Miller Hayashi Architects

Life-to-date expenditures

\$135,696

Project budget and funding source(s)

\$23,916,878 (BEX V); \$4,400,000 (CSR Grant)

West Woodland Elementary School: Classroom and Gymnasium Addition

Scope

Enlarging the existing West Woodland Elementary School will help address enrollment growth in the neighborhood.

This project includes construction of a new, approximately 28,000 square foot addition and remodeling approximately 7,700 square feet of the existing building. This will provide 12 new classrooms, an expanded gymnasium, a commons, and associated support and infrastructure spaces. The remainder of the existing school building will receive interior architectural finish upgrades and improvements to technology and communication infrastructure. Site work includes improved landscaping and play areas. The loading dock will be moved, and a seven stall parking lot for staff will be added.

By the end of 2019, design development was complete. Construction documents were being developed. The SEPA had been appealed and a hearing was being coordinated. Construction is expected to begin in Summer 2020.

Project complete

Fall 2021

School Design

McGranahan Architects

Life-to-date expenditures

\$778,852

Project budget and funding source(s)

\$11,165,600 (BEX V); \$6,000,000 (Distressed Schools Grant); \$2,500,000 (CSR Grant)

2019 SMALLER/SUMMER BUILDING PROJECTS

These projects are typically scheduled over one summer or two summers. By doing the work in the summer, disruption to teaching and learning is avoided.

African American Academy (Rising Star at AAA): Roof replacement, phase I

Scope

This project replaces the roof of the African American Academy building (AAA), the home of Rising Star Elementary. Phase I was completed in Fall 2019. Phase II will begin in Summer 2020.

Project complete

Fall 2020 (Phase I and II)

Architect

S.M. Stemper Architects

Contractor

Wayne's Roofing, Inc.

Life-to-date expenditures

\$3,151,702

Project budget and funding source(s)

\$7,508,761 (BEX V)

Ballard High: Field lights

Scope

Installation of four light poles and LED light fixtures at the football field and track.

Project complete

Fall 2019

Architect

D.A Hogan

Contractor:

KCDA/Musco

Life-to-date expenditures

\$779,311

Project budget and funding source(s)

\$196,796 (BEX IV); \$639,287 (BTA IV)

Blaine (Catharine Blaine) K-8: Seismic improvements



Preparation for shotcrete with wall tied to foundation



After shotcrete installation and backfilling

Scope

Seismic improvements were made in the auditorium and the gymnasium. Large sections of walls in both zones were amended with the addition of shotcrete and tied back down to the foundation. In the auditorium, flooring was removed to pour a new footing underneath the existing kitchen wall. New steel X-bracing was installed on the upper section of the gymnasium exterior. An existing brick mechanical chimney was lowered for seismic reasons. Removal of more than 10 feet of brick required abatement and was overseen by hazmat remediation experts.

Project complete

Fall 2019

Architect

Harthorne Hagen Architects

Construction Management

Shiels Obletz Johnsen, Inc.

Contractor

CDK Construction Services, Inc.

Life-to-date expenditures

\$872,968

Project budget and funding source(s)

\$1,149,958 (BEX IV)

Broadview-Thomson K-8: Seismic improvements, Phase I



Corridor wall has been tied to new foundation and ready for shotcrete. Seismic steel collector beams installed near ceiling.



Example of excavation depth for tying concrete shear wall to foundation

Scope

Seismic upgrades are being installed throughout the school in a two-phase project. Work includes seismic bracing and concrete shear walls tied into the building foundation.

Project complete

Fall 2020 (phases I and II)

Architect

DLR Group

Contractor

Lincoln Construction, Inc.

Life-to-date expenditures

\$5,245,711

Project budget and funding source(s)

\$7,826,376 (BEX IV)

Eckstein Middle: Sunshades and phase II of seismic improvements



Sunshades installed on south side of school

Scope

Project 1: Sunshades were installed on south-facing windows to reduce heat-gain during months when the sun is higher in the sky. During the winter, the sun can still enter the classrooms to provide natural light.

Project 2: Seismic improvements were made, completing the project that began in summer 2018.

Project complete

Fall 2019

Architect

Project 1: Rolluda Architects, Inc.

Project 2: Rolluda Architects, Inc.

Contractor

Project 1: CDK Construction Services, Inc.

Project 2: CDK Construction Services, Inc.

Life-to-date expenditures

Project 1: \$461,107

Project 2: \$4,392,333

Project budget and funding source(s)

Project 1: \$500,000 Washington State Distressed Schools Grant

Project 2: \$5,554,117 (BEX IV)

Franklin High: Door and window replacement, phase I

Scope

Doors and windows are being replaced. Phase I, in Summer 2019, focused primarily on the east and south sides of the school. Phase II is scheduled for Summer 2020.

Project complete

Summer 2020

Architect

Bassetti Architects

Contractor

Sheldrup Building Services, Co.

Life-to-date expenditures

\$3,630,524

Project budget and funding source(s)

\$4,990,985 (BTA IV)

Garfield High: Track and field improvements, and field lighting

Scope

Four light poles and LED light fixtures were installed at the football field and track. Improvements were made to the track and field.

Project complete

Fall 2019

Architect

Freeman Architects, Inc.

Contractor

Sprinturf, LLC

Life-to-date expenditures

\$1,826,458

Project budget and funding source(s)

\$2,238,565 (BTA IV); \$156,400 (BTA III)

Laurelhurst Elementary: Seismic Improvements



Brace beam bolted to floor



Cross bracing in gymnasium

Scope

Seismic bracing was installed in the gymnasium.

Project complete

Fall 2019

Architect

IBI Group Architects, Inc.

Contractor

Slate Construction, Inc.

Life-to-date expenditures

\$1,045,014

Project budget and funding source(s)

\$1,235,102 (BEX IV)

Muir (John Muir) Elementary: Geothermal wells



Drilling for geothermal wells



Geothermal equipment installation

Scope

Geothermal wells were installed under the north parking lot and under the playground south of the school. Wells were drilled to a depth of 300 feet and fluid lines were run to the existing boiler and pump room on the second floor. A large vault was buried under the south playground with six-inch copper lines running into the building, across the auditorium ceiling and into the boiler room.

A new exterior exit door in the auditorium was installed to conform with ADA exit requirements. The existing heating equipment was removed from the exterior mechanical pad on the east side and the enclosure was re-installed for exterior janitorial storage.

Project complete

Fall 2019

Architect

IBI Group Architects, Inc.

Construction Management

Shiels Obletz Johnsen, Inc.

Contractor

Western Ventures Construction, Inc.

Life-to-date expenditures

\$2,226,553

Project budget and funding source(s)

\$2,378,522 (BTA III)

North Queen Anne (Cascade Parent Partnership Program): Roof replacement

Scope

This project included roof replacement and associated seismic improvements.

Project complete

Fall 2019

Architect

S.M. Stemper Architects

Contractor

Schuchart Corporation

Life-to-date expenditures

\$2,656,166

Project budget and funding source(s)

\$3,462,237 (BEX V)

Olympic View: Roof

Scope

This project repaired the roof and made appropriate repairs to associated moisture intrusion.

Project complete

Fall 2019

Architect

S.M. Stemper Architects

Contractor

Wayne's Roofing, Inc.

Life-to-date expenditures

\$1,319,774

Project budget and funding source(s)

\$1,500,000 (BTA III)

Roosevelt High: Field lights



Scope

Four light poles and LED light fixtures were installed at the football field and track.

Project complete

Fall 2019

Architect:

D.A. Hogan

Contractor:

KCDA/Musco

Life-to-date expenditures

\$1,843,245

Project budget and funding source(s)

\$1,762,741 (BTA III); \$639,287 (BTA IV)

Sand Point Elementary: Seismic improvements



Seismic bracing in gymnasium



Seismic bracing in lunchroom

Scope

Seismic bracing was installed in the school lunchroom and gymnasium.

Project complete

Fall 2019

Architect

IBI Group Architects, Inc.

Contractor

Slate Construction, Inc.

Life-to-date expenditures

\$952,405

Project budget and funding source(s)

\$981,295 (BEX IV)

View Ridge Elementary: Seismic improvements



Epoxy bolting steel channels to the exterior



Completed steel channels painted to match building exterior elements.

Scope

The unreinforced exterior masonry required the addition of steel channels to maintain structural integrity. In total, 100 steel channels were epoxy bolted to the walls — 96 on the exterior and four on the interior. Channels were painted dark green to match existing detailing on the exterior. A new ADA compliant hand railing was installed at the entry.

Project complete

Fall 2019

Architect

DLR Group

Construction Management

Shiels Oblatz Johnsen, Inc.

Contractor

EMTech, LLC

Life-to-date expenditures

\$535,231

Project budget and funding source(s)

\$590,966 (BEX IV)

Capacity Management Projects and Portable Placement



Prepping portables for removal from Bagley Elementary



Lowering portable after crane lift over existing building at Eagle Staff Middle School

Scope

These projects provide additional capacity for enrollment growth, class size reductions, and changing Special Education needs throughout the district. Projects included repurposing spaces in existing buildings, using space in conference rooms or office areas, dividing larger classrooms to create two classrooms, adding portables, and converting some childcare spaces into classrooms.

In 2019, a total of 75 work orders were created for new classrooms or conversions. All of these projects were performed by district shops. These work orders included: six for class-size reduction, 20 for enrollment growth, 14 for portable placement and related needs, four for program placement, and 31 for Special Education projects.

Portable placements were related to capacity needs and included moving six portables from Bagley Elementary, moving two portables from Roxhill site, and moving two portables from Ingraham High School. The portables from Bagley were moved to North Beach Elementary, Schmitz Park interim site, Addams Middle School, and Eagle Staff Middle School. Portables from Roxhill were moved to North Beach. Portables from Ingraham were moved to Eagle Staff. In addition, two portables at Bagley Elementary were demolished.

Project costs ranged from less than \$100 to \$170,000. In addition to those costs, curriculum, technology, and furniture were also purchased.

Projects complete

Fall 2019

Life-to-date expenditures

\$2,494,128

Project budget and funding source(s)

\$4,000,000 (BTA IV)

Financial Reports

BTA III PROGRAM FINANCIAL SUMMARY

	Board Approved Current Budget	Charged to Date*	Forecast at Completion
Buildings/Infrastructure			
Adams ES Sprinkler Upgrades	625,806	33,364	625,806
Bagley ES Building Renovation	3,808,243	-	3,808,243
Ingraham HS Waterline	968,760	190,835	968,760
Lafayette ES HVAC and Sprinkler Upgrades	3,537,400	-	3,537,400
Leschi ES Seismic Improvements	124,025	121,709	124,025
McGilvra ES HVAC, Seismic, Sprinkler, and Waterline	3,062,560	2,775,789	3,062,560
Memorial Stadium Roof Upgrades	46,515	-	46,515
Mercer MS HVAC Upgrades	1,184,040	-	1,184,040
Montlake ES HVAC Updates	1,209,800	-	1,209,800
Muir ES Geothermal Wells Installation	2,378,522	2,226,553	2,378,522
North Queen Anne ES Roof (BEX V)	2,773,734	2,656,166	2,773,734
Olympic View ES Roof Replacement	1,500,000	1,319,774	1,500,000
Van Asselt (Rising Star) Roof (BEX V)	3,308,106	3,151,702	3,308,106
Robert Eagle Staff MS New Construction	1,212,799	1,212,799	1,212,799
Wing Luke ES HVAC Upgrades	1,058,460	1,026	1,058,460
	26,798,770	13,689,717	26,798,770
Academics and Athletics District Wide			
Volunteer Projects DW	200,000	147,773	200,000
K-3 Class Size Reduction DW	2,200,000	2,172,527	2,200,000
Nutritional Services Equipment DW	2,000,000	716,546	2,000,000
Maintenance Equipment DW	2,000,000	1,757,771	2,000,000
Staff and Administration	18,827,861	17,581,584	18,827,861
CORE 24 Graduation Requirement (Science & Computer Labs)	2,649,036	1,492,124	2,649,036
Skills Center DW	1,781,000	1,656,106	1,781,000
Early Learning DW	2,938,791	872,448	2,938,791
Capacity & Program Placement DW	22,569,209	21,327,475	22,569,209
Garfield HS Track	156,400	110	156,400
Franklin HS Field	1,606,341	1,231,163	1,606,341
Whitman MS Field	1,606,341	1,064,994	1,606,341
Emergency Field Repairs DW	939,600	156,151	939,600
	59,474,579	50,176,772	59,474,579
Completed Projects			
Completed Buildings Projects	108,602,572	108,598,363	108,602,572
Completed Academics/Athletics Projects	75,856,703	75,986,324	75,856,703
Completed Technology	35,223,059	35,223,059	35,223,059
	219,682,334	219,807,746	219,682,334
Program Reserve (Includes Unearmarked Fund Balance)	2,399,070	-	4,066,070
TOTAL BUDGET AND EXPENDITURES	\$ 308,354,753	\$ 283,674,235	\$ 310,021,753
Revenue Sources / Received to Date			
BTA III Levy Collections	268,301,579	268,301,579	268,301,579
Other (Local, State, and Federal) Revenue Funding**	41,720,174	41,720,174	41,720,174
TOTAL PLANNED REVENUE AND COLLECTIONS	\$ 310,021,753	\$ 310,021,753	\$ 310,021,753

* Activity through December 31st 2019

BEX IV PROGRAM FINANCIAL SUMMARY

	Board Approved Current Budget	Charged to Date*	Forecast at Completion
Major Projects			
Fairmount Park ES Modernization and Addition	19,405,000	17,900,194	17,900,194
Mann HS Modernization and Addition	12,758,732	12,758,732	12,758,732
Genesee Hill ES New Construction	41,163,658	39,790,754	40,030,158
Thornton Creek ES New Construction	42,809,841	39,893,851	40,403,547
Arbor Heights ES New Construction	40,968,133	40,331,842	40,324,818
Hazel Wolf K8 New Construction	39,577,070	39,749,835	39,847,899
Seattle World School @ TT Minor Repurpose and Modernization	20,138,125	20,110,499	20,110,499
Olympic Hills ES New Construction	45,222,668	43,687,300	43,687,563
Jane Addams MS Modernization	13,087,082	12,844,574	12,975,113
Cascadia ES New Construction	45,708,045	43,978,480	44,164,620
Robert Eagle Staff MS/Licton Springs Program New Construction	76,356,999	74,068,073	74,720,126
Meany MS Repurpose and Modernization	30,000,893	29,239,608	29,341,721
Cedar Park - Interim Site Renovation	10,750,000	11,122,064	11,136,096
Loyal Heights ES Modernization and Addition	46,553,886	45,685,265	46,099,350
Queen Anne ES Modernization and Addition	19,315,405	18,807,544	19,315,405
Lincoln HS Phase I Repurpose and Modernization	101,305,557	95,198,469	101,305,557
Wing Luke ES New Construction	47,513,684	15,528,687	47,513,684
Bagley ES Modernization and Addition	40,344,411	11,987,180	40,344,411
Cedar Park ES Modernization	1,425,000	1,134,814	1,321,821
Decatur New School Modernization	1,500,000	1,314,991	1,384,476
Other Staffing Costs	4,866,000	4,866,000	4,866,000
Underspend (Completed Major Projects Projections)	(11,875,327)	-	-
	688,894,862	619,998,758	689,551,791
Infrastructure and Academics District Wide			
Infrastructure (Roofs, Waterline, Fields)	9,978,111	7,721,582	9,127,680
Security System District Wide	4,020,000	2,983,781	4,020,000
Science Labs and Lunch Rooms	16,671,594	13,092,059	16,294,588
Seismic Improvements	40,484,395	18,942,045	38,903,224
Major Preventative Maintenance (MPM)	18,000,000	18,000,000	18,000,000
Technology District Wide	53,800,000	49,730,106	53,800,000
Underspend (Completed Infrastructure Projects Projections)	(2,808,608)	-	-
Academics (IB, STEM etc.)	3,000,000	1,612,483	3,000,000
Capacity Flexibility (Maple Addition)	1,057,755	217,410	1,057,755
Capacity / Portable Management	6,000,000	5,906,529	6,000,000
	150,203,247	118,205,996	150,203,247
Program Administration and Support			
District Wide Moving Costs	5,000,000	5,236,931	5,500,000
Downtown School Planning	5,000,000	1,072,607	5,000,000
Staff and Administration	28,500,000	24,669,441	28,500,000
Levy Planning and Election Costs	3,000,000	781,111	3,000,000
Project Management Software Licenses	2,000,000	742,003	2,000,000
	43,500,000	32,502,093	44,000,000
Program Reserve (Includes Underspend Projections)	9,659,500	-	8,502,571
TOTAL BUDGET AND EXPENDITURES	\$ 892,257,608	\$ 770,706,846	\$ 892,257,608
Revenue Sources / Received to Date			
BEX IV Levy Collections	689,088,533	689,087,131	689,088,533
Other (Local and State) Revenue Funding	203,169,076	201,799,455	203,169,076
TOTAL PLANNED REVENUE AND COLLECTIONS	\$ 892,257,608	\$ 890,886,586	\$ 892,257,608

* Activity through December 31st 2019

BTA IV FINANCIAL SUMMARY

	Board Approved Current Budget	Charged to Date*	Forecast at Completion
Major Projects			
E.C. Hughes ES Modernization	14,434,053	14,256,788	14,434,053
Magnolia ES Modernization and Addition Phase I	39,596,493	39,052,765	40,096,493
Webster School Modernization and Addition	39,837,094	18,578,337	39,837,094
Ingraham HS Roof, Seismic and Addition	40,854,685	36,685,694	40,854,685
Cedar Park ES Boys & Girls Restroom Addition	586,000	101,471	586,000
Eckstein MS Sunshades	500,000	461,107	500,000
Frantz H Coe ES Addition	7,900,000	661,053	7,900,000
Magnolia ES Addition Phase II	4,300,000	382,731	4,300,000
	148,008,326	110,179,946	148,508,326
Infrastructure and Equipment District Wide			
Exterior Cladding and Exterior Doors	4,557,143	1,219,674	4,557,143
Roof Improvements	14,210,336	13,248,118	13,247,967
Heating, Ventilation and Air (HVAC) Systems	5,557,069	-	5,557,069
Electrical Service	1,959,007	-	1,959,007
Fire Alarm System Improvements	619,412	-	619,412
Intercom System Replacements	221,109	-	221,109
Masonry and Exterior Windows/Doors	10,217,624	3,791,651	10,217,624
Security Improvements (Doors and Window Alarms)	1,088,327	549,510	1,088,327
Underspend (Completed Infrastructure Projects)	(962,369)	-	-
Capacity / Portable Management DW	6,000,000	3,490,964	6,000,000
Food Service Equipment and Lunch Room Tables DW	1,250,000	787,913	1,250,000
Maintenance and Grounds Equipment DW	2,300,000	1,149,327	2,300,000
Major Preventative Maintenance (MPM)	18,000,000	6,872,767	18,000,000
Security Equipment (Phones and Cameras) DW	3,000,000	400,844	3,000,000
Technology District Wide	104,675,000	59,678,755	104,675,000
	172,692,659	91,189,522	172,692,659
Academics and Athletics District Wide			
Athletic Field & Exterior Lights	13,746,737	6,685,691	13,346,737
Core 24 Graduation Requirements (Science & Computer Labs)	5,000,000	136,692	5,000,000
Program Placement DW	8,518,952	3,275,026	8,518,952
Special Education Program Modifications DW	4,800,000	601,924	4,800,000
Student Assessment System Licenses DW	3,500,000	-	3,500,000
Underspend (Field and Field Lights)	(\$400,000)	-	-
	35,165,689	10,699,333	35,165,689
Program Administration and Support			
Levy Planning & Election Costs	3,000,000	1,999,379	3,000,000
Staff & Administration	25,744,303	6,184,544	25,744,303
Capital Eligible Loan Repayment	3,640,000	3,640,000	3,640,000
Debt Service Payment	8,100,000	5,610,000	8,100,000
Property Acquisition	15,000,000	6,841,369	15,000,000
Web-Based Facilities Archival Record	20,000	-	20,000
	55,504,303	24,275,292	55,504,303
Program Reserve (Includes Underspend Projections)	744,115	-	244,115
TOTAL BUDGET AND EXPENDITURES	\$ 412,115,092	\$ 236,344,093	\$ 412,115,092
Revenue Sources / Received to Date			
BTA IV Levy Collections	470,575,135	235,554,035	470,575,135
Other (Local and State) Revenue Funding	(58,460,043)	12,362,378	(58,460,043)
TOTAL PLANNED REVENUE AND COLLECTIONS	\$ 412,115,092	\$ 247,916,413	\$ 412,115,092

* Activity through December 31st 2019

BEX V FINANCIAL SUMMARY

	Board Approved Current Budget	Charged to Date*	Forecast at Completion
Major Projects			
Aki Kurose MS (Design/Planning Only)	8,000,000	-	8,000,000
Alki ES New Construction	66,856,808	-	66,856,808
Asa Mercer MS New Construction	152,542,598	39,680	152,542,598
John Rogers ES New Construction	91,537,404	-	91,537,404
Kimball ES School New Construction	84,563,883	166,425	84,563,883
Leschi ES Addition	4,400,000	-	4,400,000
Lincoln HS Phase II (Theater, CTE, Seismic)	28,968,384	88,252	28,968,384
Madison MS Addition	10,500,000	-	10,500,000
Montlake ES Modernization and Addition	64,821,447	-	64,821,447
North Beach ES HVAC Improvements	3,100,000	12,034	3,100,000
North Queen Anne (Cascade Parent Partnership)	4,305,937	-	4,305,937
Northgate ES New Construction	90,272,294	217,319	90,272,294
Rainier Beach HS New Construction	238,150,426	4,395	238,150,426
Sacajawea ES (Design/Planning Only)	4,000,000	5,572	4,000,000
Van Asselt (Interim Site) Addition	44,247,436	40,212	44,247,436
Viewlands ES New Construction	88,094,475	109,682	88,094,475
West Seattle ES Addition	28,316,878	135,696	28,316,878
West Woodland ES Addition	19,665,600	778,852	19,665,600
	1,032,343,570	1,598,119	1,032,343,570
Infrastructure, Academics/Athletics District Wide			
Electrical, HVAC, Fans	31,863,552	-	31,863,552
Exterior Cladding, Doors, Windows	35,481,480	6,860	35,481,480
Roof and Seismic Improvements	40,535,244	27,406	40,535,244
Site Improvements	5,902,934	24,332	5,902,934
Security, Fire Alarms (Site Specific)	2,642,288	-	2,642,288
Sound Attenuation	1,519,152	-	1,519,152
Athletic Fields	19,163,043	91,509	19,163,043
Capacity / Portable Management DW	6,000,000	-	6,000,000
Core 24 Graduation Requirements (Science & Computer Labs)	1,500,000	-	1,500,000
Food Service Equipment and Lunch Room Tables DW	2,000,000	-	2,000,000
Maintenance and Grounds Equipment DW	1,500,000	-	1,500,000
Major Preventative Maintenance (MPM)	30,000,000	-	30,000,000
Playground Improvements	3,195,530	-	3,195,530
Program Placement DW	1,500,000	-	1,500,000
Security Equipment DW	10,000,000	-	10,000,000
Special Education Program Modifications	1,500,000	-	1,500,000
Technology District Wide	151,698,000	-	151,698,000
	346,001,223	150,107	346,001,223
Program Administration and Support			
District Wide Moving Costs	500,000	-	500,000
Levy Planning & Election Costs	5,000,000	-	5,000,000
Staff & Administration	24,000,000	-	24,000,000
Capital Eligible Program Loan Repayment	1,000,000	-	1,000,000
Debt Service Payment	10,100,000	-	10,100,000
Property Acquisition	30,000,000	-	30,000,000
	70,600,000	-	70,600,000
Program Reserve	29,359,453	-	29,359,453
TOTAL BUDGET AND EXPENDITURES	\$ 1,478,304,246	\$ 1,748,226	\$ 1,478,304,246
Revenue Sources / Received to Date			
BEX V Levy Collections	1,389,500,000	-	1,389,500,000
Other Local Revenue Funding	23,760,558	1,748,226	23,760,558
Non-Levy Funding	65,043,688	-	65,043,688
TOTAL PLANNED REVENUE AND COLLECTIONS	\$ 1,478,304,246	\$ 1,748,226	\$ 1,478,304,246

* Activity through December 31st 2019