



Board Special Meeting

Work Session: City of Seattle's Families, Education, Preschool and Promise Levy;

Executive Session: Litigation

Thursday, June 14, 2018, 5:00 – 6:30pm

Board Auditorium & Board Conference Room, John Stanford Center

2445 – 3rd Avenue South, Seattle WA 98134

Agenda

Call to Order

5:00pm

Work Session: City of Seattle's Families, Education, Preschool and Promise Levy

5:00pm

Executive Session: Litigation

6:00pm

Adjourn

6:30pm*

*Special meetings of the Board, including work sessions and retreats, may contain discussion and/or action related to the items listed on the agenda. Executive sessions are closed to the public per RCW 42.30. *Times given are estimated.*



FAMILIES,

EDUCATION,

PRESCHOOL

AND PROMISE PLAN



Presentation Outline

- Closing the Opportunity Gap
- Community Voice
- FEPP Levy Goals and Budget Summary
- Investment Overviews



Closing the Opportunity Gap and Creating Pathways to Jobs

- In Seattle, disparities persist due to inequitable levels of access to educational experiences and expanded learning opportunities that promote academic readiness.
- By 2020, 70% of all jobs in Washington State will require some postsecondary education.
- FEPP will help close opportunity gaps in access to preschool, K-12 and community-based supports, and post-secondary options.

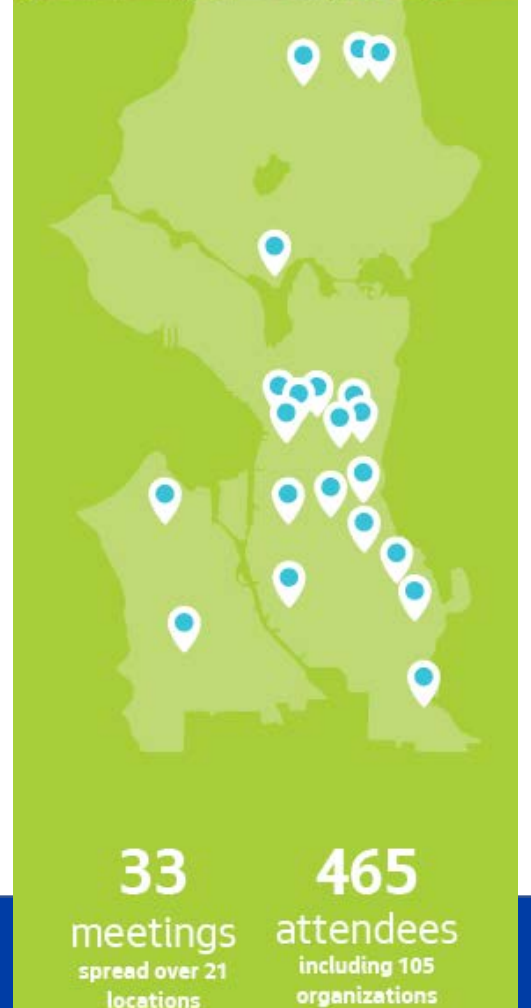
“When you unleash the opportunity of youth, AMAZING things happen.”

-Mayor Jenny A. Durkan



2018 FEPP Plan: Reflects Community Voice

- November 2017-February 2018, DEEL held:
 - 33 engagement meetings with
 - 465 attendees city-wide
- The following community priorities rose to the top:
 - Closing Opportunity Gaps
 - Early Learning
 - Expanded Learning Opportunities
 - Systems Coordination
 - Wraparound Services



2018 FEPP Plan Goals

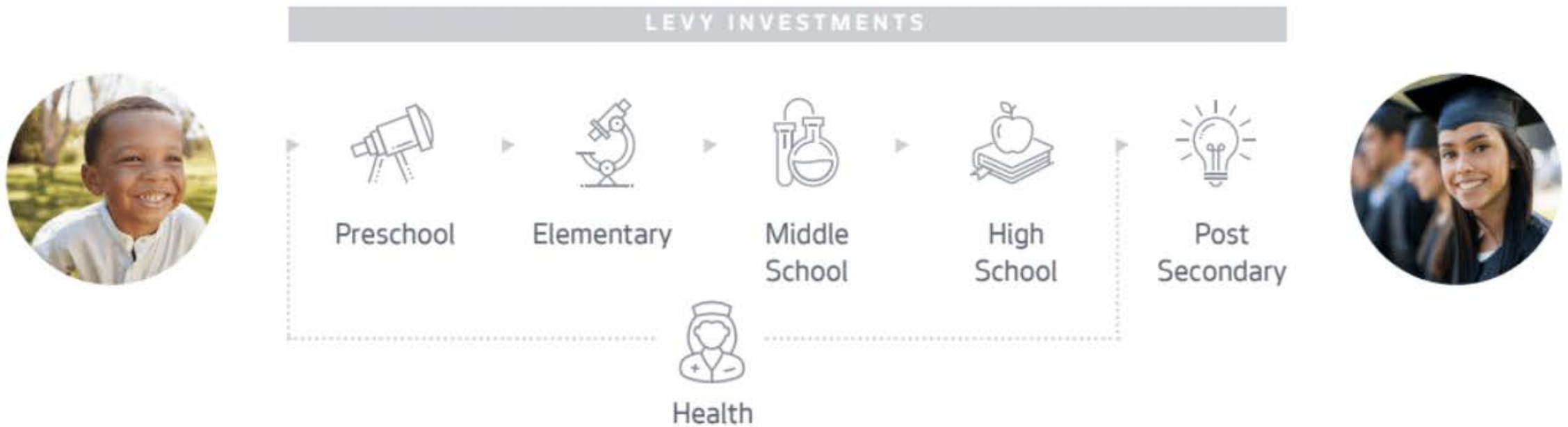
Partner with families and communities to advance education equity, close opportunity gaps, and build a better economic future for Seattle students by investing in:

- 1 High-quality early learning services that prepare children for success in kindergarten
- 2 Physical and mental health services that support learning
- 3 College and job readiness experiences that promote high school graduation
- 4 Post-secondary opportunities that promote attainment of a certificate, credential, or degree

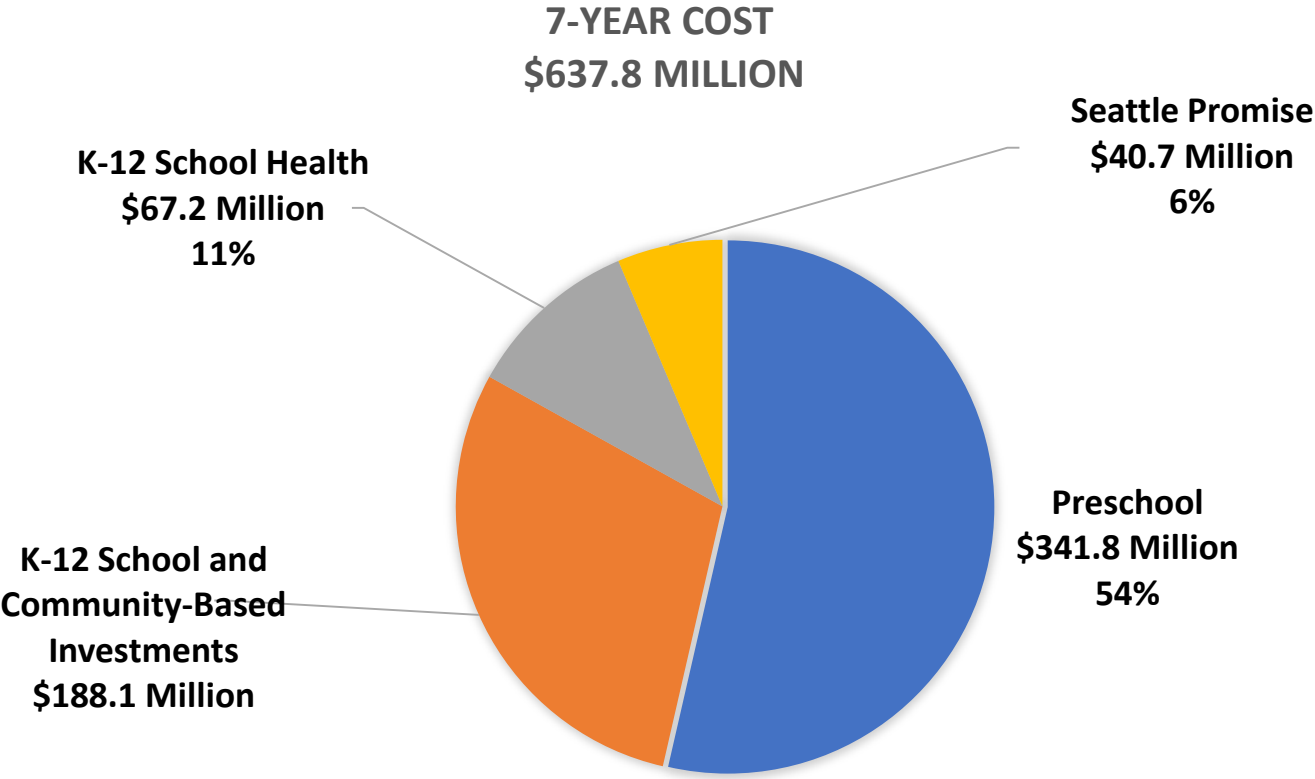


A School-to-Opportunity Pipeline

Creating a school-to-opportunity pipeline to close opportunity gaps and ensure a more affordable future for Seattle's youth.



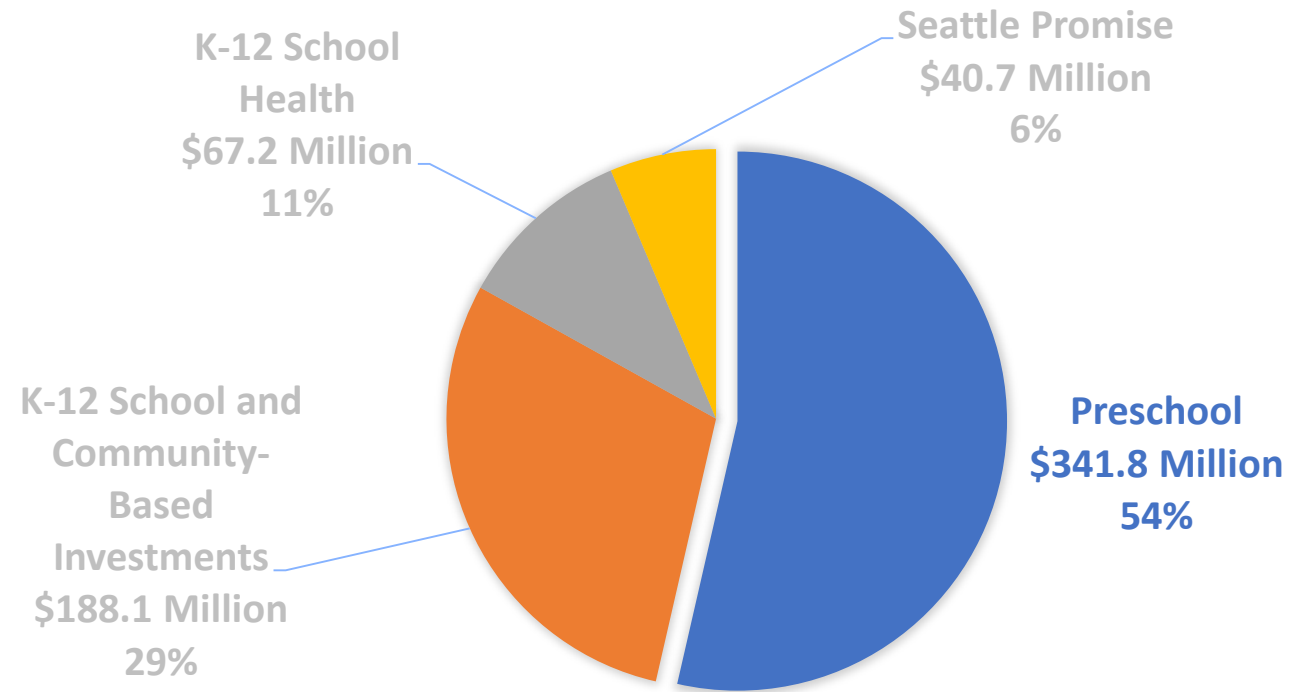
2018 FEPP Plan 7-Year Budget Summary



Budget Summary Comparison

Investment Area	Status Quo (in millions)		2018 FEPP (in millions)	
	Average Annual	7-Year Cost	Average Annual	7-Year Cost
Preschool	\$43.7	\$306.2	\$48.8	\$341.8
K-12 School and Community	\$25.8	\$180.6	\$26.9	\$188.1
K-12 School Health	\$8.8	\$61.4	\$9.6	\$67.2
Seattle Promise	\$0.0	\$0.0	\$5.8	\$40.7
Total Levy Spending	\$78.3	\$548.2	\$91.1	\$637.8
Revenue Offset	(\$2.4)	(\$16.9)	(\$2.4)	(\$16.9)
Total Levy Revenue	\$75.9	\$531.3	\$88.7	\$620.9

Preschool and Early Learning



High Return on Investments in Preschool

For every \$1 spent on preschool, there is an estimated \$8 return on investments.

High quality preschool can:

- Prevent the achievement gap
- Support grade promotion
- Improve health outcomes
- Boost earnings



Preschool Plan

Continue to build and expand a high-quality, full day preschool program for Seattle children.

- Grow preschool enrollment by 65% over 7 years
- Serve over 2,500 children by the end of Levy in 2025-26

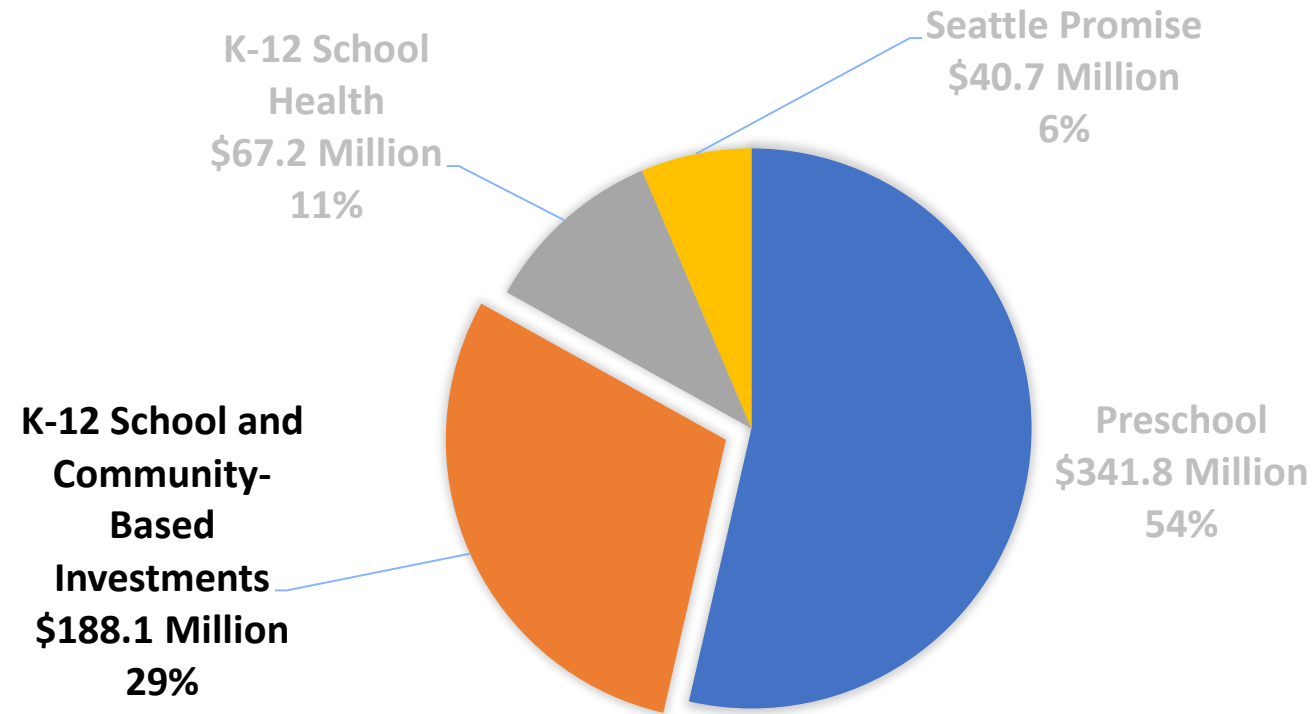


Preschool and Early Learning

- Tuition subsidies
- Comprehensive support
- Quality Teaching
- Facilities and Organizational Development
- Evaluation
- Extended Day Childcare
- Subsidies
- Homeless Child Care Program
- Child Care Mentorship Program



K-12 School & Community-Based



K-12 School & Community-Based Investments Help Close the Opportunity Gap

Expanded learning opportunities develop social emotional skills and workplace readiness, and play an important role in helping close the opportunity gap.

Expanded learning opportunities and targeted academic support can:

- Support student learning and enrollment in and completion of post-secondary and job preparation opportunities
- Mitigate the effects of summer learning loss
- Improve academic performance in ELA and math
- Help students form a college-going identity



K-12 School & Community-Based Investments

The workforce of the future is growing up right now, we need to give them tools to be successful throughout their lives.

- 75% of all high school graduates enroll in a post-secondary institution however, significant gaps persist when looking at race and ethnicity

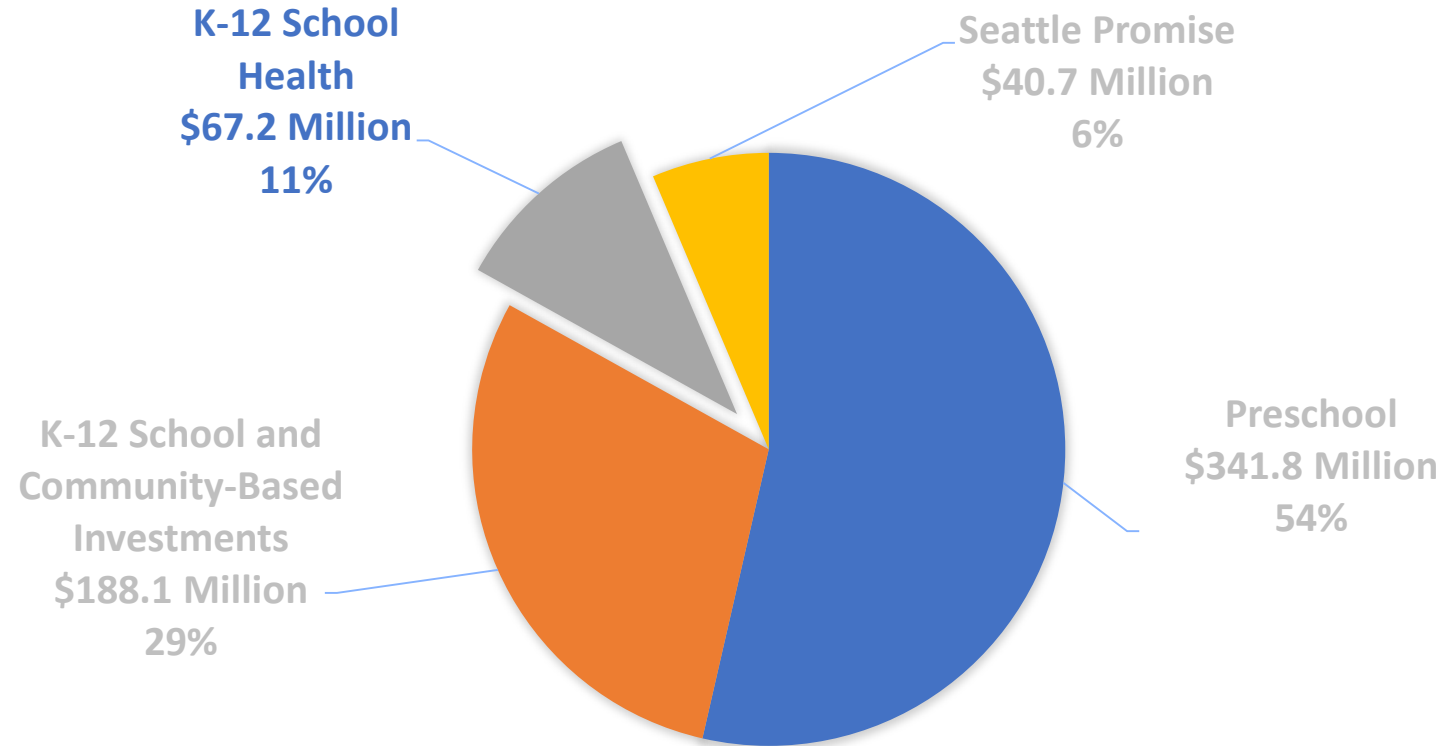


K-12 School & Community-Based Plan

- School-Based Investments
- Opportunity and Access Investments
- Wraparound Services
- Culturally Specific and Responsive



K-12 School Health



The Benefits of School-Based Health Centers

- Poor health severely limits a child's motivation and ability to learn.
- SBHCs have educational benefits such as:
 - Reductions in rates of school suspension
 - Increases in grade point averages
 - Grade promotion



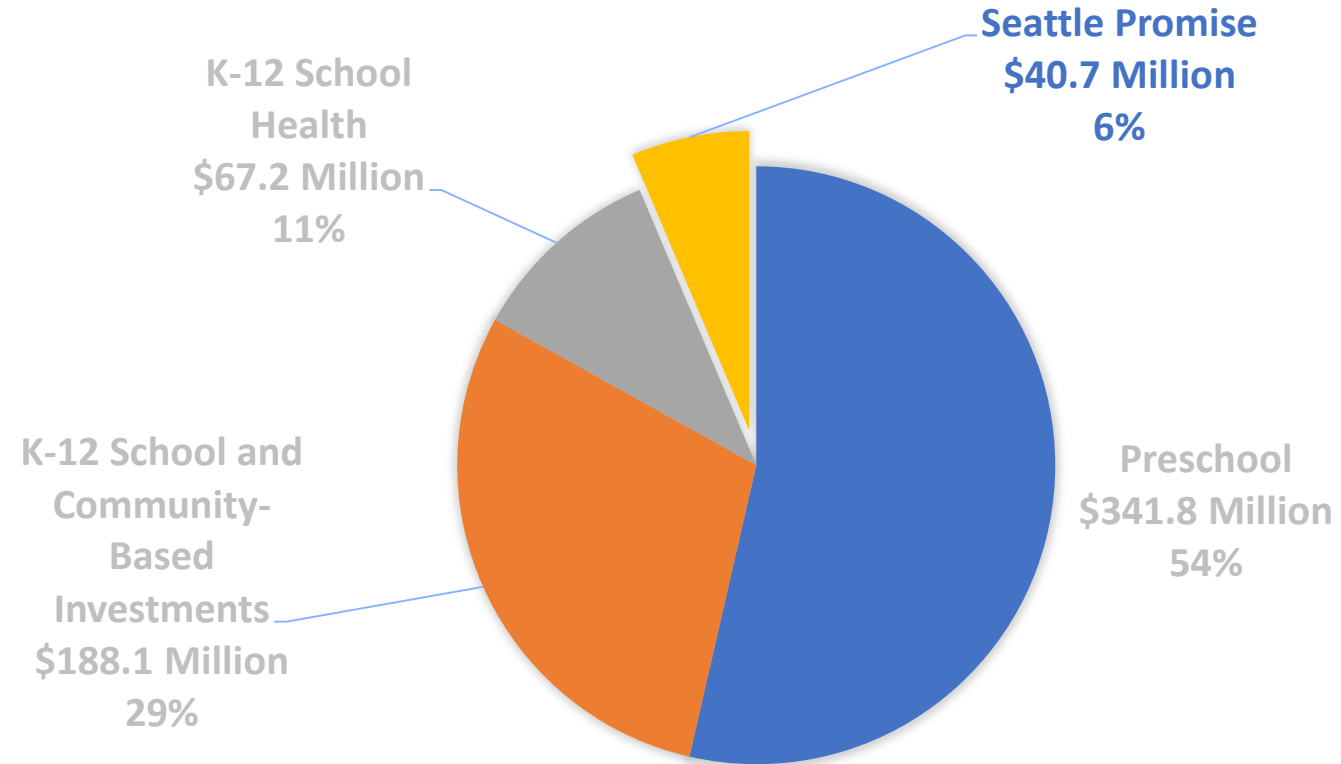
K-12 School Health Plan

Students whose health and wellness needs are met are healthier, more focused, and better able to learn.

- School Based Health Centers
- School Nursing
- Mental Health Enhancement
- Oral Health



Seattle Promise



Seattle Promise Research

68% of current jobs in a three county region (King, Snohomish, and Pierce) require a post-secondary credential and will grow to 78% in the next five years.

Post-secondary access, persistence, and graduation is impacted by a variety of factors:

- Academic preparation or readiness
- Affordability
- Wraparound services



Seattle Promise Reach

Enhanced access to post-secondary opportunities increase social mobility and economic opportunity.

- 17 Seattle public school high schools
- 1,360 high school students
- 3 Colleges (South Seattle, Seattle Central, & North Seattle)
- 870 Seattle Promise students (13th and 14th year)



Seattle Promise Plan

- Readiness Academy
- Summer Bridge
- Application Support
- College Counselors
- Seattle Promise College Tuition Program
- Non-Tuition Financial Support



Next Steps

- Implementation Plan
- Partnership Agreement





FAMILIES,

EDUCATION,

PRESCHOOL

AND PROMISE PLAN

