

Goals you set

GOALS FOR US AS TEAM

KEEP BIG PICTURE IN MIND

ACTIVE LISTENERS

DISAGREE W/ RESPECT

COMPROMISE IS NECESSARY

TAKE RISKS - BE OPEN-MINDED

WILLING TO SHARE IDEAS

GOALS FOR NEW SACATJAWA
FITS COMMUNITY (INSIDE & OUT)
"THAT MAKES SENSE"
SENSORY FRIENDLY SCHOOL

GOALS FOR NEW SACATJAWA

SUSTAINABLE - ENVIRONMENTALLY
FRIENDLY

BUILDING IS LOVED

GROUNDS ARE LUSH & BRIGHT
INVITING

INSPIRING
THINK FROM A CHILD'S PERSPECTIVE
- KID FRIENDLY

GOOD FLOW - EASILY NAVIGABLE
FEELS LIKE A SAFE SPACE (PHYSICAL
EMOTIONAL)

Design Principles



Inclusiveness for All (Universal Design)
Natural Feel / Connection to Nature
Flow – site and building connectedness
Civic Presence – Gentle Edge
Building and Site as a Teaching Tool
Sensory Friendly School

Ideas Conversation - Feedback

Exploring the Possibilities



- 1) Connection to Nature
- 2) Site and Building Space Flow
- 3) Best Fit on the Site – Gentle Massing
- 4) Students' and Teachers' Experience

“Brave New World” – Exploring Ways to Engage and Help Students in More Ways

Sacajawea Elementary School

Gentle Bend

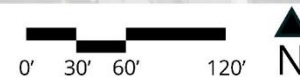
Linear

Compact

Singular

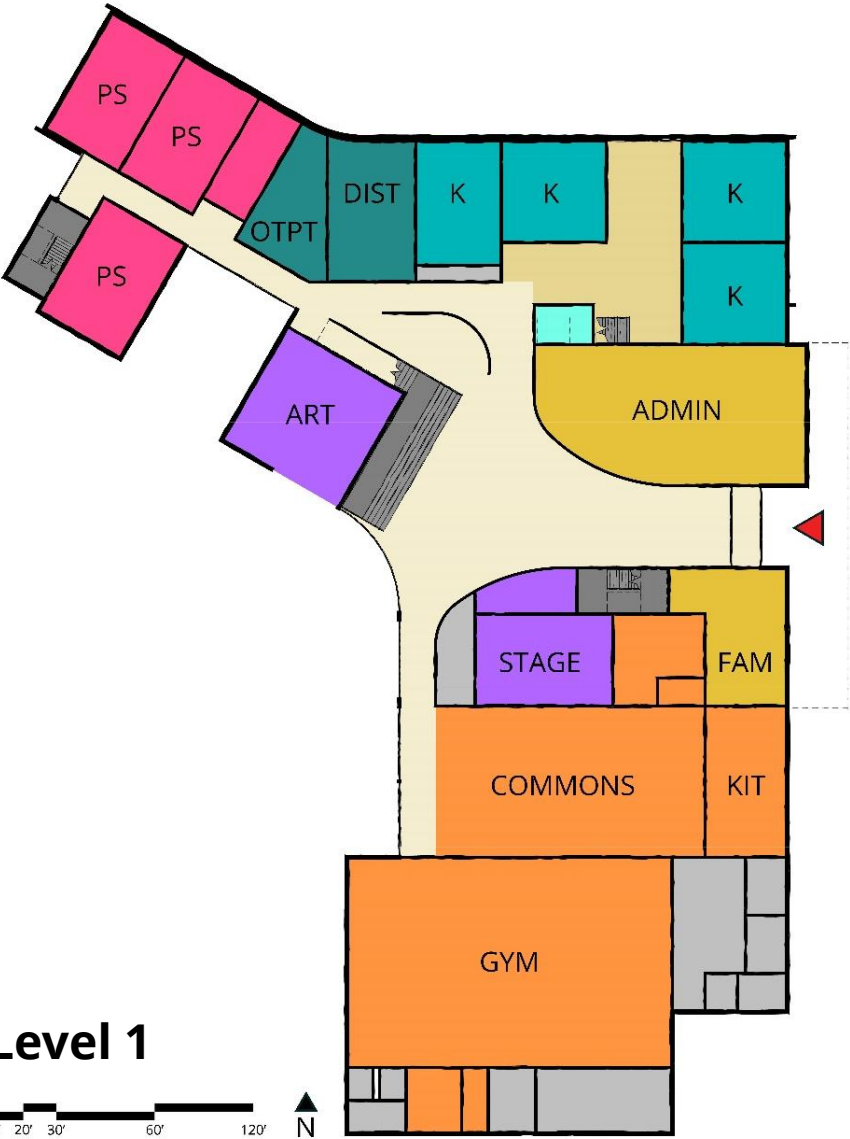


LEVEL 1



Floor Plans

Gentle Bend



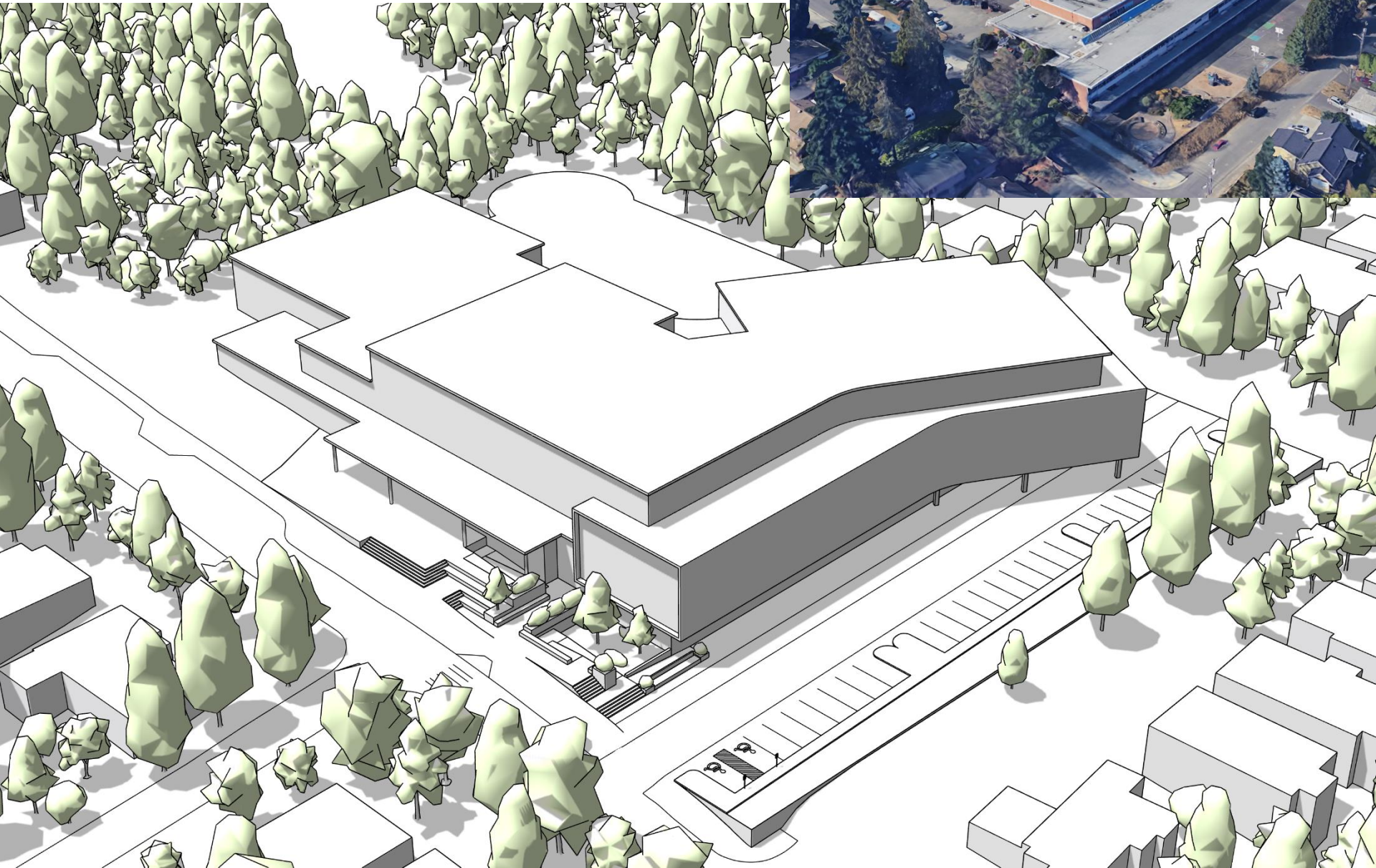
Floor Plans

Gentle Bend



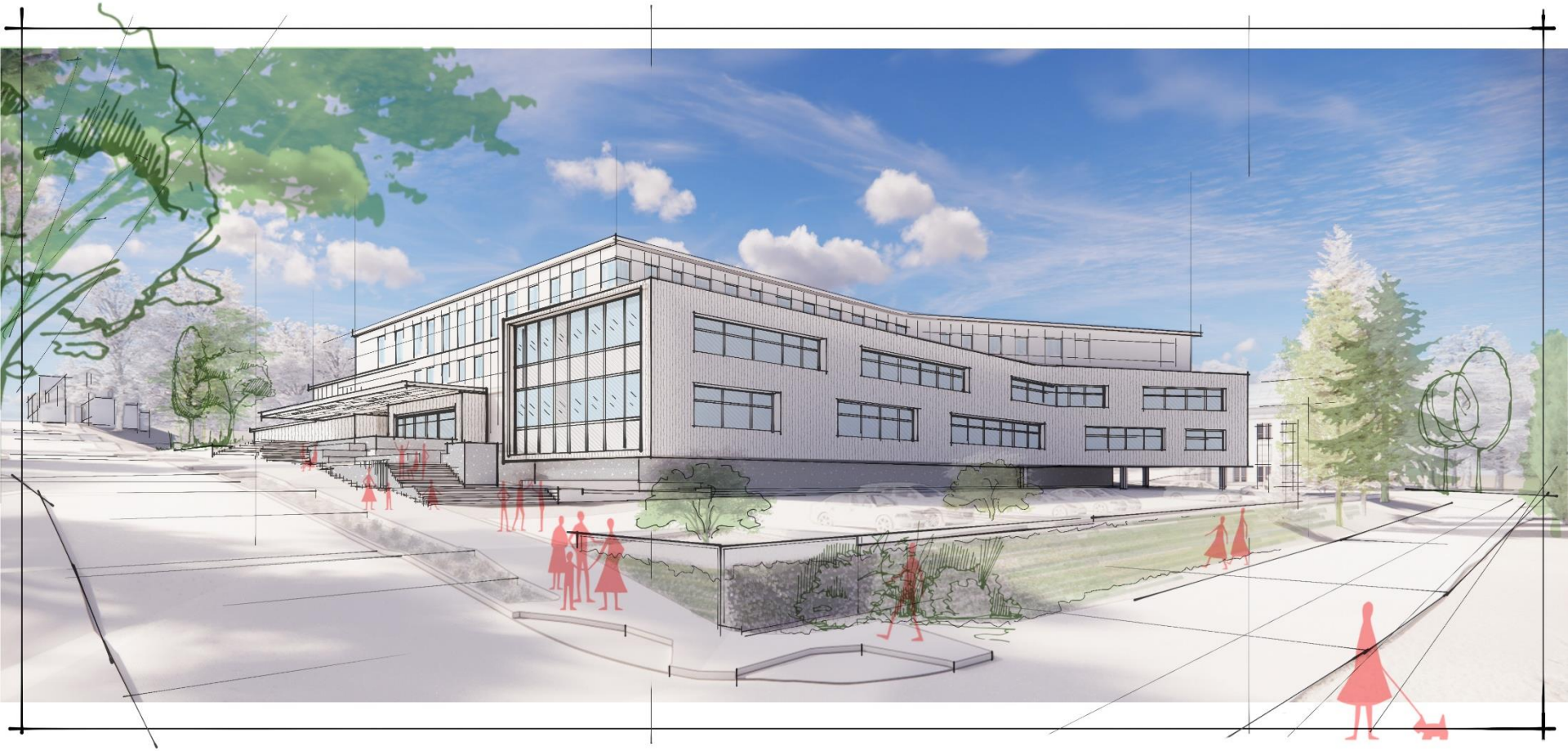
Bird's Eye View

Gentle Bend



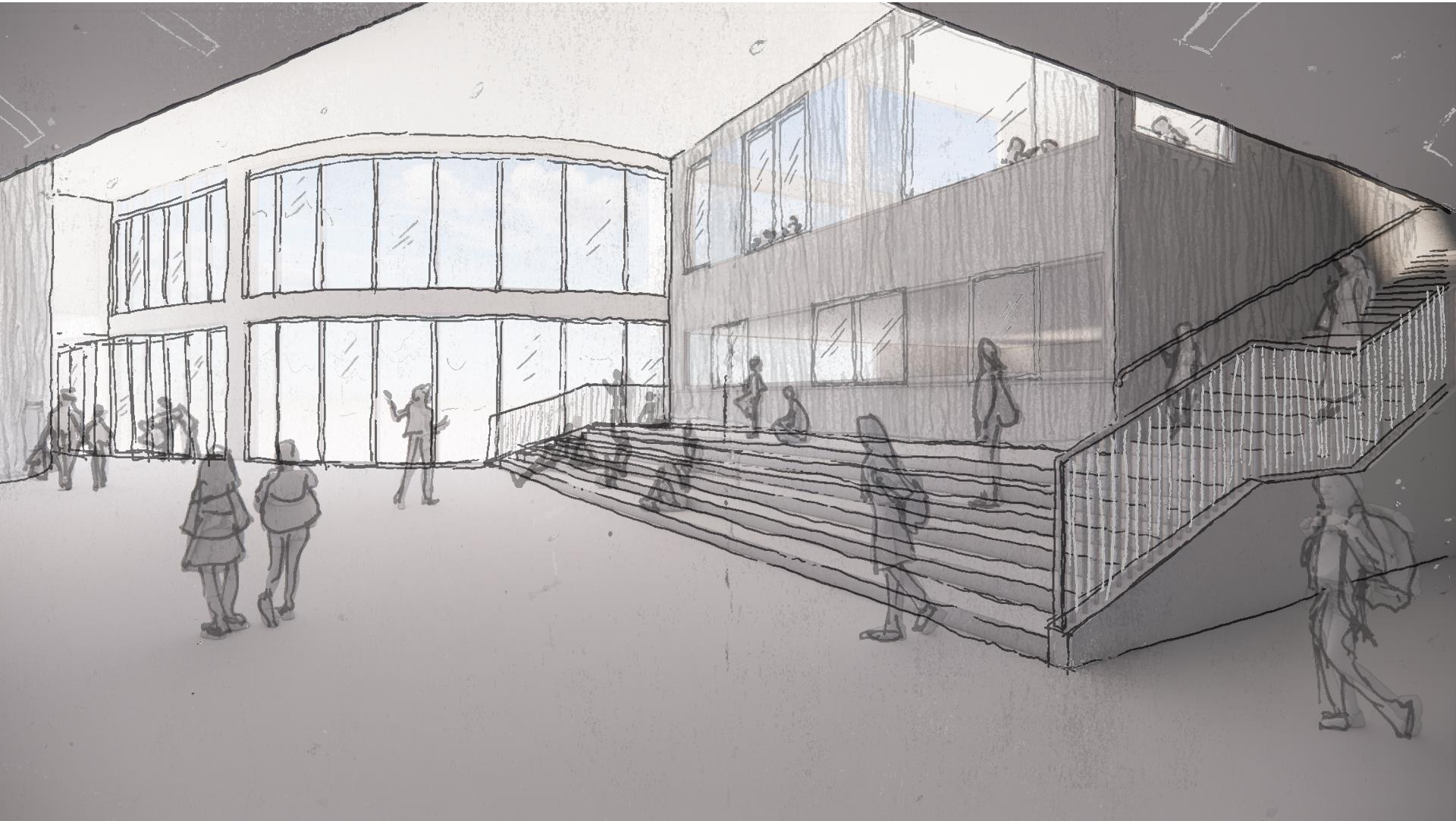
Perspective

Gentle Bend



Interior Perspective

Gentle Bend



SDAT Comments

Gentle Bend

The SDAT Committee liked the following features of Gentle Bend:

- The gathering space on the stairs in front of Art, near the main entry.
- The narrower building footprint. You can see outside from the hallways.
- The curved walls in the entry lobby that let you see out to the play area and down the classroom hallway.
- The Art classroom is central and is a feature in the entry lobby.
- The appearance of the building from the exterior feels calm.
- The view from the Administration suite to the play area.
- The connection to nature due to the flow of the school.
- The separate access to the Early Learning Center (ELC).
- The covered play area for the OTPT and ELC on the 1st floor.
- The send of enclosure in the Learning Commons. The classroom walls jog to break the sight line into these areas from the main hallway.

SDAT Comments

Gentle Bend

The SDAT Committee would like the Design Team to study the following:

- Access from the Family room into the Commons/Cafeteria.
- Create a “catwalk” experience at the Library overlook.
- Place an Extended Resource space per floor. Currently, all Extended Resource is on the second floor in the middle of the classrooms which is centrally located within the school.
- Ramp access from the drop off area to the West side of the building.
- Place a calming space near each student classroom cluster.

Due to the above comments and potential for future updates, the SDAT committee preferred **Gentle Bend**.