

Nathan Hale PTSA
10750 30th Avenue NE
Seattle, WA 98125

May 2007
Volume XIII, Issue 8
Leanne Hawkins, Editor

Nathan Hale High School PTSA
Local Unit 6.15.470

Officers:

President, Melissa Larson
larschmitt@hotmail.com

Vice President, Richard Brandon
brandon@u.washington.edu

Treasurer, Jackie Stratton
wellnessresource@yahoo.com

Secretary, Judy Reed
thosereeds@juno.com

The **Raider Reader** is published nine times during the school year. E-mail your articles to: Hawkins1022@msn.com
Deadline: May 15 for June 2007 issue

Inside this Issue:

Principal's Message 1
PTSA News 2-3
School News & Information 3-5
Bulletin Board 6-8

Looking for — the next *Raider Reader* editor! It's an interesting, fun, and educational PTSA position. Contact Leanne Hawkins for more details.

Calendar Watch

May 1: PTSA meeting re Drugs, Alcohol & Teens, 7:30 pm, LRC
May 3-5 and 10-12: *Urinetown, The Musical*
May 6: Jazz at Third Place Books
May 7-11: Staff Appreciation Week
May 9: PTSA General Meeting, 7:30 pm, LRC
May 16: Senior Project Night
May 17: Blood Drive
May 19: Senior Prom
May 21: Jazz Night at Triple Door
May 24: Equity Summit

Raider Reader

The Nathan Hale High School PTSA Newsletter

Principal's Message

Lisa Hechtman, Nathan Hale Principal

Budgets and staffing are integral parts of spring semester in Seattle Public Schools. With inadequate funding for high schools continuing, Hale's Senate met in February to decide on critical budgetary goals: to retain staff in order to maintain smaller class size, to continue Small Learning Communities 9-12, and to keep our nationally-recognized education program. Those goals, along with our ongoing commitment to our Coalition of Essential Schools Principles and our focus on student achievement, guided the budget creation. As in the last three years, the Hale Foundation Annual Campaign came to the rescue, having over \$70,000 in-hand from the '07-08 campaign by March 12, allowing us to meet our goals. Your commitment to your student's education is to be commended!

The second half of spring focuses on hiring staff. Negotiated with the Seattle Education Association, the district has a three-phase system that operates until all positions are filled. **Phase I:** April 16 — May 4. Only current district employees can apply. We will hold interviews for 2.2 fte in Social Studies, 1.0 fte in Counseling, 1.0 fte in World Language, 0.6 fte for Athletic Director, 0.5 fte in Special Education, 0.4 fte in Physical Education, and 0.4 fte in Drama (remember a 1.0 fte is a full-time staff position). **Phase II:** Any positions remaining unfilled after May 4. Those teachers displaced from other campuses or returning from leave have the priority of accepting vacant positions for which they are qualified. This phase lasts until all displaced personnel who are contracted with the district are placed. **Phase III:** If openings remain, we can entertain applications from candidates within and outside of the district.



This year, there is the added burden of selecting a Principal for Nathan Hale. It is after much deliberation that I have accepted the position as Principal of Skyline High School in the Issaquah School District beginning next fall. This has not been an easy decision for my work here has been an overwhelmingly positive experience and filled with learning. I leave an outstanding staff of educators and a community dedicated to supporting their students' learning. I am deeply honored that you allowed me the opportunity to work with you.

Let me assure you we will work with the district to get strong leadership for this building. An interview team, consisting of students, staff, and parents, will gather to review paperwork and interview candidates. The sole purpose of this is to secure a principal who will support the exceptional work evident daily, serve this community and her students, and enable students to have the opportunities necessary to become honorable, thinking, skillful citizens.

Many educators note Nathan Hale and her ability to educate students. You and your students should be proud of this school and the learning community you have built and maintain through your support. I am.

PTSA NEWS AND INFORMATION

Letter from the PTSA President

Melissa Larson, Hale PTSA President

Change is inevitable, change helps us grow. Some change is fun: some, not so much. Some big changes are happening in our school community — ending this year and planning for next; redesigning our building for its upcoming remodel. These are exciting changes.

Some not-so-fun changes include several Nathan Hale staff who will be moving to new school communities. This leaves a few holes in our community we need to fill — an Athletic Director, several teachers, and a new principal. These are big changes for us all!

The school district has an official timeline and process for hiring and much of late April-early May will be taken up with the process. Several teams of staff, parents, and students are undergoing school district training and spending time with their teams preparing to interview candidates. It's a great opportunity to participate in the hiring process. It is also a big responsibility. Since the teams must be kept small enough to work quickly, it is important that all team members keep the needs of the entire school in mind. It is not feasible to have a representative for every interest group at Hale on each team, so interview team members must set their specific interests aside and participate as a member of our whole school community.

Being a part of the hiring process is interesting and can also be difficult. Many people at school know interviews are being planned and are taking place. Everyone wants to know who will be filling positions at our school: interview team members are questioned by friends, family, staff and students. However, they cannot share! Team members cannot share names of interview candidates, nor the interview questions, nor recommendations. Team members are not being rude when they say they cannot share: they are being responsible members of their interview team.

Participating in the process is time-consuming, a great opportunity, and a big responsibility. It is also wonderfully interesting and can be difficult (keeping information confidential). All in all, we have a better chance of hiring people who are a good fit for our school because we build dedicated interview teams that include staff, students, and parents.



PTSA Program Recap

Judy Reed, Hale PTSA Secretary

Here are upcoming PTSA-sponsored or -assisted events for your calendars:

April 30: New Student and Parent Orientation night, 6:30 pm

May 1: Drugs, Alcohol and Teens. Guest speaker Laura Reding from Ryther Child Center, LRC, 7:30 pm.

May 9: Final PTSA meeting of the year, LRC, 7:30 pm (Board elections, school budget overview, master schedule — perhaps meet the new principal)

May 16: Senior Project judging night—PTSA hosts dinner for the judges

The business portion of the April 18 PTSA meeting was short because the evening's focus was a presentation by Deanne Jones from PEMCO about teen drivers. In addition to noting some alarming statistics about young drivers and risky, sometimes fatal, behaviors, Ms. Jones encouraged parents and guardians by noting they do exert the biggest influence on their children's driving, and our state's graduated licensing laws work well to gradually allow inexperienced drivers to master the rules of the road. Parents, be sure your insurance is adequate: you might consider purchasing additional liability insurance (\$1,000,000) through an inexpensive umbrella policy, allowing you to cover injuries to others that could wipe out your regular insurance limits. Finally, Ms. Jones noted that most accidents occur with passengers in the car, so if your teen has passengers, be doubly cautious!

Deanne encouraged folks to contact her with questions, comments or concerns: 206-628-5860 or deanne.jones@pemco.com.



The deadline for June's *Raider Reader*, the last issue of this school year, is Tuesday, May 15, 2007. E-mail items to Leanne at Hawkins1022@msn.com. Also, check us out on the Hale website, where every issue is in full color. And please give a big round of applause to webmaster **Tony Hand**, who posts our newsletter monthly. Thank you!

PTSA/SCHOOL NEWS AND INFORMATION

Great Teachers Make Great Schools

Teacher Appreciation Week May 7-11

Pam Ferguson & Patricia D'Alessandro, PTSA Staff Appreciation

Communities across the country have set aside the first full week of May to acknowledge local educators for the contributions they make to our lives.

Looking for a way to show Hale teachers and staff how important they are? We have discovered our great teachers and staff enjoy the chance to connect and have conversation as they consume delicious treats. The Staff Appreciation committee has scheduled the following events. Please consider saying "Thanks" by contributing your time and/or culinary talents.

Tuesday, May 8: Fabulous Breakfast Feast (late start day)

Thursday, May 10: Desserts & Coffee at lunch

- A variety of breakfast dishes and desserts are needed and welcomed
- Volunteers are needed to set up, serve, and clean up on event days.

To eat is human; to digest, divine — Mark Twain

In addition, any time during that week consider letting teachers and staff know you appreciate what they do. The ASB (Associated Student Body) will provide students with their own opportunities to acknowledge the teachers. Please let us know how you can join in. And a reminder - the June teacher luncheon happens at the end of the year!

Pam Ferguson 206-523-9725 pjfergiee@yahoo.com

Patricia D'Alessandro 206-523-4005

pmdalessandro@msn.com

About the Yearbook

Kyramy Sagen-Cook & Eric Cook, Yearbook Staff

- A) Our **advertising packet** and **rate sheets** can be e-mailed/mailed to you today! This is our second year with a full-color book, including the advertising pages. We believe our yearbook shows the excellence of our school and is viewed positively by all in our community. The yearbook provides a service, a means to publicly show your involvement in our community. Ads have already been sold and space is limited, but coupon inserts are a great option and there is no limit. If you know a Wedgwood, Lake City, or Seattle business that would benefit from positive exposure and a win-win situation with Hale, have them contact us about an ad in the *Heritage*. Deadline: **May 4, 2007**.
- B) **Yearbooks for Sale.** If you know someone who would like a full set of yearbooks (especially graduating seniors who would like all four years), contact the yearbook team. Prices: 2006—\$65; 2005—\$45; 2004—\$25; all previous yearbooks at \$20 each.
- C) **Next year's Seniors** who want their photo in the 2008 yearbook must submit a professional photo from a reputable photographer to the yearbook team by **mid-October 2007**. Hale's official photographer is Rowland Studios. In June, Rowland Studios will mail a letter to all Class of 2008 students indicating the appointment time and place and including information about Rowland Studios. Please look for your letter in the mail.
- Feel free to contact Ms. Tertocha, advisor, any time at hal_yearbook@seattleschools.org or 206-252-3711 or stop by Room 124.

May Equity Summit

Kiné Camara, ASNH President

Nathan Hale High School proudly presents "Unity in the Community," a community-wide equity summit designed to promote community awareness and foster commitment from participants to embrace a positive role in securing equity for all in the Hale community. We are recruiting community members to participate in a panel presentation the evening of **May 24** in the PAC. Panelists will be asked to:

- Offer examples of equity issues from a personal point of view
- Offer personal perceptions of the state of equity today
- Offer solutions and visions for ensuring positive steps toward equity

Following the presentation, panelists will be asked to assist student advisors during break-out sessions involving follow-up questions and activities. We hope that "Unity in the Community" will provide participants with a positive outlook and practical strategies for engaging in productive roles related to issues of equity within our community.



SCHOOL NEWS AND INFORMATION

Thank You To The Nathan Hale Community For The Annual Campaign Contributions To Date: \$84,533

Amount still needed to reach our goal: \$35,467



Annual Campaign Summary

- The goal is \$120,000
- Money goes to teacher salaries, education tools, classroom technology upgrades, and the Homework Help Center
 - All funds will be used in the 2007-2008 academic year
 - Donate on-line at <http://www.nathanhale.org/donations.htm>
 - Or pick up a pledge envelope at the school office

Our Families Make Us Strong: Why 967 Can Be Hale's "Magic Number"

The good news: There is only one fundraising campaign each year dedicated solely to academics: the Annual Campaign. At this point, the Nathan Hale community has pledged \$84,533 — almost three-fourths of the way to our goal! Terrific news!

The bad news: Only 22% of Nathan Hale's 967 families have answered the request to pledge — and we still need \$35,467 to reach our goal!

The good news: A little each month adds up to a lot! If 420 families gave \$109 each, we'd reach our goal — that's about \$10 per month. If 173 families gave \$250, we'd reach our goal — that's about \$20 per month. If 90 families gave \$500, we'd reach our goal — that's about \$40 per month.

So, make a monthly miracle happen for your student. With all 967 families at Nathan Hale working together, we can keep the "A" in Academics for our children — even \$25 will make a difference. Please make your donation today: on-line at www.nathanhale.org or pick up a pledge form at the school office.

Your Annual Campaign Donation "at work": Homework Help Center

It's no news to most of you that Nathan Hale is one of the most respected high schools in Seattle: average SAT scores are among the highest, class sizes are low, and teachers are highly motivated. However, many of you may not know that the Seattle school district has slashed funding for high schools — in fact, Hale has seen its school district funding reduced by almost \$600,000 over the past five years.

One of the ways Nathan Hale teachers keep the academic standards at our school high, even in the face of drastic budget cuts, is through the **Homework Help Center**. Nestled in the Hale library, a dedicated staff of Hale teachers and tutors from the UW keep the Homework Center open Monday through Thursday. Assistance in all core subject areas and world languages is provided.

This is a tremendous service to students. Approximately 500 individual students have taken advantage of tutoring, computers, library space, resources, etc. over the course of the year. The Homework Center is an integral part of the Hale football program (85 students), who use the HC before practice three days a week during the season. Most importantly, students know the library is open after school every day (except Fridays). They have consistent, reliable access to computers, teachers and tutors. It is a GREAT time and place to study.

But this service costs money, and the school has not always been able to keep the Homework Help Center open because funds were not available! The Annual Campaign is dedicated to the Hale budget for teachers' salaries and supplies; the next \$5000 is dedicated to computer upgrades for classes; and the next \$10,000 funds the Homework Help Center. These priorities are set by Principal Hechtman and the school staff. So, whether it's \$25 or \$250 — maybe \$10 a month? — please donate on-line at www.nathanhale.org or pick up a pledge form at the school office today. Pledge what you can afford, and pat yourself on the back for helping provide tools that create an educated, skilled citizenry at Nathan Hale.



SCHOOL NEWS AND INFORMATION

Annual Campaign News, cont.

Is This Your Reason “NOT to Give”?

Reason Not to Give: *We're new to the school and we'll give next year.*

Answer: Donations made now will be used for the 2007-2008 school year. Hale is working to maintain our current staffing levels and class sizes. Money donated through the Annual Campaign also helps pay for the Homework Help Center and upgrading classroom technology. In order to do all these things, we need your help NOW.

Reason Not to Give: *We already donated to the Annual Campaign last fall.*

Answer: Thanks so much for your past support of the Annual Campaign. That money is being used right now to pay for teachers and essential classroom materials. At this point, we're raising funds to be spent starting next fall in the 2007-2008 academic year. If you'd rather pay us in the fall, you can make a pledge now and write a check later this year. We need your ongoing support to keep this school great.

Reason Not to Give: *Our student is graduating this year and we have to pay for college.*

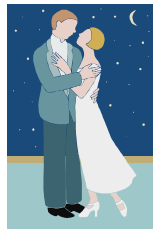
Answer: Many of our families with seniors make a donation as a “thank you” for a good education. Some families give the same amount they gave when their child was at Hale, and some families give more or less. Every year, parents of seniors give money that helps educate your child. We hope you can do the same.

“Dancing in the Moonlight”

Marni Balint, Hale Staff

Prom: Senior prom will be held Saturday, **May 19** at Inglewood Golf Club. The goal of Hale students and advisors has been to have every senior participate in the festivities. Tickets will be \$10 each and can be purchased during lunch at the AC window beginning May 7. Non-Nathan Hale students are welcome as guests as long as they have a pre-approved guest pass. (Deadline for pre-approved guest forms is May 16.) Guests must be under 21 and have identification with them at the dance. Whether or not you have a prom date, we look forward to seeing you! Come on down, let's have a great time!

Senior Breakfast: Senior Breakfast takes place the morning of Friday, **June 8** at Salty's in West Seattle. Check the Daily Bulletin soon for more information regarding ticket prices.



Scoliosis Screening

Meg Davis, Hale Staff

On April 4, 2007, half of the ninth grade had their backs screened for scoliosis, curvature of the spine. Thanks to all the Health teachers for sending students during class time. Volunteering again as a nurse screener was Janice Burnell, grandmother to ninth grader Devin Hughes. Janice has come to Hale numerous times to support this program. Also tremendously helpful was the senior nursing student from Seattle University, Sarah Skach, who helped to screen, coordinate student flow, and document the results. Screening for the rest of the class takes place **May 30**. Though there is current legislative debate regarding the scoliosis screening in schools, it is still mandatory in Washington State. Many thanks to the screening team.

Last Blood Drive of the Year!

Heidi Dullum, Hale Staff

Mark **May 17** as the day to donate blood at Nathan Hale in the Little Theatre. Because many students are now donors, spots fill fast. To reserve your appointment, e-mail Heidi Dullum at hedullum@seattleschools.org. Thank you for your support!

Thank you to the FedEx/Kinko's on Sandpoint Way for our discounted copying during this school year. It has allowed us to keep publishing!

BULLETIN BOARD: ANNOUNCEMENTS, EVENTS, RECOGNITION

SPREE 2007 News

Lynn Wolf and Nina Wolsk, SPREE '07

Where will your senior be after graduation? At SPREE, we hope! Over 125 seniors already have tickets to this fun-filled, safe, all-night party. Make sure your student is there too!!

Tickets: Tickets are still available for \$100. Order forms are in the main office or at the SPREE Treats table. Payment can be made by mail or at the SPREE Treats table.

Scholarships: We still have a few scholarships. Application forms are in the Counseling office. The deadline for tickets and scholarships will come up in late May or early June, so don't delay!

Liability Forms: Each student attending SPREE must have a completed liability form. Students who have purchased tickets will get those soon. Please be sure to follow the directions to complete and return them promptly.

Class of '08 Parents—Chaperones Needed!

Remember the “good ‘ole days” and stay up all night partying! You can be part of SPREE, the fun and safe celebration of graduation, by volunteering as a chaperone. Bring a friend to make it more fun. Great way for **junior parents** to get involved and find out what SPREE is all about! **Monday, June 18, 9 pm—6 am.** To volunteer or get more information, contact Lisa Harris at lannharris@msn.com or 206-633-5406.

Music Events in May

May 6: Jazz at Third Place Books Commons, 5 pm (Lake Forest Park)

May 21: 8th Annual Jazz Night at the Triple Door, 7 pm (downtown Seattle)

More information can be found at www.nathanhale.org/music/home.html.

Hale Musical News

Gabi McCarthy, Hale Parent



We would like to share information about some of our wonderful music students in this new feature. We hope to share more students' stories in future editions of the *Raider Reader* and on our website.

Spotlight on Seniors in the Music Department

Chris Hylander began playing drums in elementary school, then played percussion in the Concert Band for four years. This year Chris became drummer for our Jazz Band, meeting at 0 period (the crack of dawn), and he is excited to learn about jazz. Chris also plays guitar and bass, and is studying piano for his senior project. Chris has played in several bands outside of school, covering rock, reggae, and funk. He loves sports and now plays Ultimate for Hale. He is still deciding whether to become an electrician or study engineering.

Shawn Hanson has played the trumpet in Band all four years, and in Jazz Band the last two. Due to a shortage of low brass in this year's Concert Band, Shawn switched to first baritone horn and now to tuba. He has directed Pep Band several times, and the crowd loved it! Shawn enjoys all sports and currently plays Ultimate. He will join the Jazz Band at North Seattle CC, and plans to pursue engineering or architecture later at the UW.

Charles Wicklander has played piano for our Jazz Band for four years. Last year he also joined Vocal Jazz to play piano, and this year he sings in VJ and plays piano on some pieces. Charles also performs with the fabulous band Variety Pack (piano, bass, vocals). Often during the last two years Charles has donated his time to play for Hale fundraisers. This year he also found time to participate in the musical. Charles loves his red and white '59 Chevy, and anticipates studying Music Composition at WSU next fall.

Eve Smason Marcus probably broke a record as she participated in about 25 music classes during her four years at Hale (Choir, Vocal Jazz, Orchestra, Jazz Band). I remember Eve's first solos in Vocal Jazz in the first concert in 2004 — she was fabulous then, and she's better now! Eve is not only a wonderful musician (she plays violin, viola, is learning piano and guitar, and she sings), she is an inspiring leader, routinely helping other students with their parts, directing VJ outside of school hours, or starting up a Klezmer Band with her friends. Eve has a huge role in this year's musical, showing off her amazing vocal range. She will pursue a BFA at Jazz College of The New School, and a BA at Eugene Lang College.

BULLETIN BOARD: ANNOUNCEMENTS, EVENTS, RECOGNITION

Nathan Hale Physics Students to be Polar Scientists

Brian Coon, Hale Staff

Students learning about the polar ice cap, visiting the Coast Guard icebreaker *Healy*, writing proposals for experiments, and being paid interns at a research company — that's real science! Bellevue-based NorthWest Research Associates (NWRA) won a grant from the National Science Foundation (NSF) to do research on arctic ice. Part of NWRA's proposal was an educational outreach piece involving Nathan Hale. The NWRA team is Dr. Max Coon, father of Hale math teacher Mr. Coon, and Mr. Matt Pruis. Hale's team is Mr. Englert, Mr. Hinckley, and Mr. Coon.

NWRA's winning proposal had two components:

1. Placing 11 buoys on polar ice on either side of a *lead* (a crack/break in the ice). These buoys take positional data every hour for four months so it can later be determined how the ice on either side was moving with respect to the other side (closing in, sliding along the lead, spreading out). Think "plate tectonics." At a nearby manned ice camp, data will be collected for temperature and wind speed, duration, and direction. Hale was not involved in this first component.
2. Nathan Hale was the "educational outreach" portion of the NSF proposal. NWRA researchers came to Hale several times during fall quarter to present interesting facts about the polar region (receding ice cap = a "Northwest Passage," global warming, encounters with polar bears, etc.). NWRA put out a Request for Proposal (RFP) to which students in teams of 3-4 responded and wrote their own pre-proposal for an experiment they would like to see done on polar ice. The experiment could involve data collected by the 11 buoys, climate data, or it could be something completely different (NWRA researcher, Mr. Pruis, was actually on the ice and had the capacity to conduct some "wildcard" experiments — like how long might Nemo last in polar waters?). After the NWRA team gave feedback on the pre-proposals, student teams were invited to submit full proposals. The review process was modeled after that of NSF: Reviewers (NWRA and Hale staff members) independently review the student proposals and then send them to a review panel (comprised of NWRA researchers) to ultimately decide the "winning proposal."



Two winning student proposals were selected:

- ⇒ Author *Andrew Geiss*, '07, seeks to answer the following question: How does the interaction between preexisting and/or newly formed ice ridges and winds affect the opening, closing, and other behaviors of leads and the motion of arctic ice?
- ⇒ Authors *Phil Alexander-Lees*, *Alex Dupler*, and *Jordan Paeth*, '07, wish to better understand ice deformation and growth. They will investigate variables that affect the opening, closing, and motion of leads. One area not yet studied that this team believes deserves attention is the interaction of wind and open leads.

This summer, these students will be paid interns at NWRA, where they will analyze data from their experiment, write a report, and give a seminar to NWRA staff. They will also give a seminar at Hale in fall 2007.

Raider Gear Gift Ideas

Deanna Matsen, All Sports Boosters

Graduation for Seniors is just around the corner—June 18! If you are looking for an idea for a graduation gift, **Raider Gear** may be your answer! The NH Raider fleece blanket makes a great high school memento and is very useful in a dorm room, car, first apartment, or just to have around home — and all for only \$30. Other items are available as well. If interested, just e-mail Deanna Matsen at: marc.matsen@comcast.net or call me at 206-523-7051. Proceeds support Nathan Hale All Sports.

Nathan Hale PTSA
10750—30th Avenue NE
Seattle, WA 98125

NON-PROFIT ORGANIZATION
U.S. POSTAGE PAID
SEATTLE, WASHINGTON

PERMIT NO. 9984

Nathan Hale High School

PTSA[®]
everychild. onevoice.

Time-sensitive material—
please deliver promptly

Anticipation is in the air...

For music lovers: *Urinetown, The Musical!*

Performances: May 3, 4, 5 and 10, 11, 12 at 7:30 pm nightly in Nathan Hale's Performing Arts Center, with one matinee May 12 at 2:00 pm.

Ticket prices: \$12/adult and \$6/student, staff, seniors. For more information, go to www.nathanhale.org/musical



For seniors who want to graduate: *Senior Project Presentations!*

Performances: May 16.

Seniors, check with Ms. Tolentino in Room 103 for your presenting room and time. Senior Projects are one of the graduation requirements: no presentation — no graduation — no diploma!

