

Nathan Hale PTSA  
10750 30th Avenue NE  
Seattle, WA 98125

**April 2007**  
Volume XIII, Issue 7  
Leanne Hawkins, Editor

Nathan Hale High School PTSA  
Local Unit 6.15.470

**Officers:**

**President,** Melissa Larson  
[larschmitt@hotmail.com](mailto:larschmitt@hotmail.com)

**Vice President,** Richard Brandon  
[brandon@u.washington.edu](mailto:brandon@u.washington.edu)

**Treasurer,** Jackie Stratton  
[wellnessresource@yahoo.com](mailto:wellnessresource@yahoo.com)

**Secretary,** Judy Reed  
[thosereeds@juno.com](mailto:thosereeds@juno.com)

The **Raider Reader** is published  
nine times during the school  
year. E-mail your articles to:

[Hawkins1022@msn.com](mailto:Hawkins1022@msn.com)

**Deadline: April 17 for  
May 2007 issue**

**Inside this Issue:**

Principal's Message 1  
PTSA News 2-3

School News & Information 3-5  
Bulletin Board 6-7

## Calendar Watch

**April 9-13:** Spring Break  
**April 17-20:** WASL testing, Math  
and Science

**April 18:** PTSA general meeting,  
7:30 pm

**April 18:** Classical concert, PAC

**April 30:** New Parent Orientation

**May 1:** Presentation re Teens and  
Drugs

**May 3:** *Urinetown* opens

**May 4:** Horticulture sale starts

# Raider Reader

## *The Nathan Hale High School PTSA Newsletter*

### Principal's Message

*Lisa Hechtman, Nathan Hale Principal*

It's spring — also known as **crunch time** in high schools. It's a "time of two minds" as we work in this school year and anticipate the next year. If it doesn't have you itching to yet, *spring fever* is just around the corner!

We enjoyed the **student exchange** with our sister school in Okinawa Prefecture, Naha, Japan as we welcomed students from Naha Senior High School for the thirty-second year of our cultural exchange. I don't know of another high school student exchange that has continued uninterrupted for that long! Tatsuno Sensei, an English teacher, chaperoned the students to experience life at NHHS, as well as joined staff meetings and observed classes to see what it means to be a U.S. high school teacher. Thanks to wonderful community support, the students were able to experience many Seattle area highlights, including attending Nathan Hale! About 10 of our students, Ms. Lynch, and Ms. Conner will leave June 24 for a three-week stay in Naha and Kyoto. We look forward to hearing about their experience.

Yankee Doodle Days (YDD) "opened" the spring sports season on campus at the end of March with an assembly highlighting ASB speeches, as it is time for student elections to leadership positions. Several lunchtime activities were held throughout the week, culminating with the junior-sponsored **Spring Fling Dance** March 30.

Our first round of the **Washington Assessment of Student Learning (WASL)** was completed in March. Several sophomores wanted to express thanks for the focus the learning community allowed for their exam, enabling them to do their best on this graduation requirement. We appreciate everyone's flexibility as we used our Integrated Studies, block time (periods 2-4) to start our days, providing extended time for students to write and read, before following that with first period and then the remainder of our day. We'll use the same schedule for April 17-20, the math and science assessments.

The staff will spend the April 4 staff meeting reading the final notebooks of our 12th graders' **senior projects** in anticipation of their dry-runs and May presentations. Reports to date are that we continue to see the same high caliber of work as we have in the past.

Finally, spring fever means warm weather. As the sun comes out, **clothing** seems to dissolve! In a school setting, clothing needs to be appropriate: underwear is to be worn UNDER clothing. Thus, bra straps, thongs, boxers, bikinis, spaghetti strap tanks, one-shouldered halter tops, see-through shirts, and other items imagined but not mentioned are inappropriate school dress. Clothing with messages about drugs, drug paraphernalia, and/or alcohol is equally inappropriate. Parents, please keep that in mind while shopping in order to assist your student in making proper clothing choices and help us all avoid undue embarrassment.



## PTSA NEWS AND INFORMATION

### Letter from the PTSA President

*Melissa Larson, Hale PTSA President*

It's feeling like spring in the northwest! There's rain, then sun, then rain and rain and rain again. Bulbs are popping out, and we feel like working in the yard even when it's pouring. Another sure sign of spring is that this school year is wrapping up and we start planning for next year. We try to focus on what needs to be done to complete this year successfully as we look ahead to what must be done to get the 2007-08 school year off to a great start. This issue of the *Raider Reader* reminds us of all the events in our school community and how we can get involved. With so many options and so much to do, how do you choose what works best for you, for your student, and your school community? How can you navigate Nathan Hale? At a recent PTSA meeting a group of parents, staff and students discussed how they got connected (and stay connected) to our school. Here a few of the shared ideas:

- Pick one "thing" to be involved in (e.g., coat check at the dances, attend Senate or ASB meetings, fold report cards, etc.) if you don't have time to be at school much.
- Invite a friend to help with an activity you're involved in — the more, the merrier.
- *Daily Bulletin* — check it out!
- Yahoo groups — sign up and scan for items of interest.
- Student newspaper, *The Sentinel* — pick one up at school or subscribe.
- *Raider Reader* — read it each month; a copy is sent to every home.
- Sports programs — go to games and meet other parents.
- Music & Drama events — attend performances and meet community.
- Sports/Music boosters — get involved in an activity your students are involved in.
- Share information you find helpful — look for someone to share that information with.

A common theme was that successful Hale community members don't try to do everything — they pick one or two things to stay connected to the school. During this busy, fun, changing time of year, focusing on one or two things that help you and your student navigate the end of the year wrap-up and activities might be the key to a fairly calm spring (and will help during the whole school year).

### PTSA Programs

*Judy Reed, Hale PTSA Secretary*

The PTSA has been busy reviewing its yearly meetings calendar and deciding how best to serve the Hale community by providing pertinent meeting topics and scheduling speakers to address interesting issues for parents and students. We look forward in the next few months to:

- **April 18 PTSA Meeting**—Presentation regarding teen drivers. We will also vote on a nominating committee for new Board members.
- **April 30 New Parent Orientation**—PTSA will have a table to sign up new members.
- **May 1**—Presentation by a counselor from Ryther Child Center on teens and drugs.
- **May 9 PTSA Meeting**—Principal Hechtman will discuss the Hale budget and how the master schedule is built.

We will keep you posted as we develop our calendar of events and inform you of special projects we decide to pursue.

**Annual Campaign:** Great news! \$70,000 of the \$120,000 goal has been received. Keep those pledges coming in!

**BEX III—Nathan Hale Remodel:** Our March 14 meeting gave a district representative a chance to tell us about the remodel. Two preliminary design meetings have been held in which priorities were established, including safety, aesthetics, and academics. Lisa chairs the Design Committee and will choose representatives for this committee: its first meeting will be 3/26/2007. Reps are needed from constituencies such as parents, school personnel, and the local community. Other opportunities for involvement will occur as focus groups are established in addition to the Design Committee. We will need to prioritize design features since Hale's basic footprint will stay the same and much of the structure will remain. The remodel budget is based on a population of 1200 students. Construction in some parts of the building could start as early as 2009, with students moving to Lincoln in 2010 and returning in 2011. Depending on the design priorities, the other option would be for students to move to Lincoln in 2010 and return in 2012.



## PTSA /SCHOOL NEWS AND INFORMATION

### News from the ASNH

Emily VanOss, ASNH Communications Commissioner

What has the ASB been doing the last few months? Well... Starting in November, ASB began writing a new and improved student body constitution, which had not been updated in over 30 years. One update created a Student Union. With representatives from each mentorship, we hope to hear from a wider range of students. Representatives were chosen in February and the first meeting was held in March. All representatives will have a vote in deciding important school issues proposed by the presiding ASNH Officers. In other words, the Student Union will act as a Congress for Nathan Hale.



Another addition to the constitution are new commissioners. At the end of each school year, the Dean of Students and a committee of class officers will appoint 8 new positions, including commissioner of clubs, athletics, social activities, assemblies & events, fundraising, visual and performing arts, technicians, and communications. The commissioners will join the class officers in the ASB class. With these new positions, we hope to get more representation and allow for a smoother, more efficiently run ASB.

In between revising the constitution, ASB plans upcoming events and assemblies. When the winter sports assembly was postponed due to snow, we had time to rethink the way we do assemblies and hopefully switch it up a bit. We are all eagerly awaiting YDD week and will begin preparing for elections in the next few weeks. Each individual class has been hard at work fundraising and doing its own endeavors. The senior class officers are making good progress in planning prom, as well as senior breakfast at Salty's. The junior class has planned Spring Fling, and successfully pulled off the Northwest food drive in December, receiving more than 14 full boxes of food. The sophomore and freshman officers have also been meeting weekly, brainstorming new fundraising ideas.

### April PTSA Meeting Info



Our next meeting will be **Wednesday, April 18, 2007** (the week AFTER spring break).

The meeting starts at 7:30 pm; the program follows a short business meeting.

Program: PEMCO's "How to improve your teenager's driving" presentation is chance for a conversation with parents and teens about the unique hazards of driving at ages 16-17, namely, how to deal with:

- \* Emotions
- \* Distractions
- \* Overconfidence
- \* Gender and behavior of teen passengers

All parents are welcome to attend the presentation by Deanna Jones, PEMCO Project Manager. **Bring your teenagers if possible.** Handouts will be available.

### PTSA Membership— State Convention

Janet Thompson, PTSA Membership Chair

The Washington State PTA 2007 Annual Convention is May 4-6 at the Double Tree Hotel in SeaTac. WSPTA voting delegates must be recorded in the State PTA office and their membership fees paid by March 30 in order to cast a vote for their PTA unit. If you plan to attend the Convention and would like to represent the Hale PTSA as a voting member, please contact Janet Thompson ([ja.thompson@comcast.net](mailto:ja.thompson@comcast.net)) to confirm your status as a paid and enrolled member of the Hale PTA. Each year our PTA has the opportunity to vote for the statewide-elected positions of President, Vice President, Leadership Director, Legislative Director, Membership Director, and At-Large Nominative Committee (2 positions). Additionally, By-law amendments will be considered. You can review the Nominating Committee report plus other pertinent information at the WSPTA website (<http://www.wastatepta.org>). Click on the State PTA Convention link.

### Re-scheduled PTSA Meeting re Drugs, Alcohol and Teens

Originally scheduled to speak on January 10, Laura Reding, MS, EdS in Couple and Family Counseling at Ryther Child Center will be at Hale on **Tuesday, May 1, 2007** at 7:30 pm in the library. Find out what drugs and alcohol are commonly used by teens, as well as risk factors, protective factors, warning signs, and what to do if you think your child is using. We'll allow plenty of time for Q&A!

## SCHOOL NEWS AND INFORMATION

**Thank you to the 179 Nathan Hale community members who have already pledged to the Annual Campaign**

### Annual Campaign Summary

- \* Goal for 2007-2008 Academic Year: \$120,000
- \* The money goes to teacher salaries, educational supplies, classroom technology upgrades, and the Homework Help Center
- \* Amount raised to date: \$70,560
- \* Still needed to reach our goal: \$49,440
- \* Donate online at [www.nathanhale.org](http://www.nathanhale.org)
- \* Or pick up a pledge form in the school office



**NATHAN HALE**  
*Annual Campaign*

**Keeping the “A” in Academics at Nathan Hale: \$5,000 for classroom technology upgrades** One of the newest, most exciting education tools in your student’s classroom is a display technology called a **document camera**. Hooked to a computer and LCD projector, the teacher can place any kind of text, graphic, or simple object under the camera’s lens and display the image on a screen. Students can modify the page, graphic, object—for example, write on the paper—while others watch what’s happening on a wall screen. It’s a versatile, interactive, and visually stimulating education tool: all learners contribute and everybody can view the results. *However, this tool can be improved. If the Annual Campaign can donate \$5,000 to Hale, then the classroom computers could have their memory improved and the speed of their computers vastly increased, resulting in improvements in classroom learning for every student at Nathan Hale.* The family members at Nathan Hale can achieve this goal together! Every donation is valuable. Please pledge today to the Annual Campaign and help keep the education tools at Nathan Hale the finest possible for all our students.

**First Campaign milestone is achieved: But “the race isn’t over yet”** All who have already pledged to the Annual Campaign have helped achieve our first “milestone.” Your pledges before March 12 ensured that Principal Hechtman could keep all the teaching staff for next year! A wonderful display of generosity and caring — thank you so much! But the “financial race” is not over. At stake: vital educational supplies and staff for your students; \$5,000 to pay for computer technology upgrades; and \$10,000 for the Homework Help Center. Can you pledge \$10 a month? Or \$20? If every Hale family could donate a personally significant monthly amount, no cuts would have to be made in education funding next year! Just check the “monthly pledge option” box on the pledge form, available at [www.nathanhale.org](http://www.nathanhale.org) or in the school office. Your pledge helps keep the educational experience at Nathan Hale marvelous — GO FOR IT!

### **Can’t afford to give to the Annual Campaign?**

*Q: When asked to contribute to the Nathan Hale Annual Campaign, do you ever find yourself saying, “We can’t afford a donation”?*

*A: Donation size doesn’t matter. Whatever you can afford to give to the Annual Campaign will benefit the education of all our students. We suggest every Hale family try to make a “personally significant contribution.” That could be \$10, \$10,000, or anywhere in between. Make your donation easier on your budget with a small monthly contribution: A pledge of \$10 a month equals \$120 a year! Your donation may double if your company has an employee gift match program—ask your personnel office. And don’t forget: Your donations give back to you if you itemize because they are tax-deductible.*

*Q: Do you find yourself saying, “Other people will give to the Annual Campaign, so we don’t have to”?*

*A: Last year over 400 Hale families and community members contributed to the Annual Campaign, totaling just over \$100,000. This year we want to increase participation to 65% of our families. If every Hale family makes a “personally significant contribution,” whether it’s \$15 or \$1,000 or anything between, all our students benefit. This money has made a real difference in keeping Hale the terrific school it is. We need your help.*

*Q: Do you think to yourself, “We shouldn’t have to donate to a public school. That’s why we pay taxes”?*

*A: Isn’t it a shame we have to ask parents to pay for basics like teacher salaries, classroom supplies, and technology? But high school budgets have been reduced drastically over the past five years, and the state does not fund a full six periods. Hale is working to keep all its teachers and maintain current class sizes. To do so, your donations to the Annual Campaign are essential.*



## SCHOOL NEWS AND INFORMATION



### Senior Project Update

*Debo Tolentino, Hale Staff*

Senior Project notebooks were due to Ms. Tolentino in Room 102 on Wednesday, March 28. Seniors should begin preparing for their final presentations which will occur the evening of **May 16**. Any parents interested in being a judge for the senior projects should contact Debo Tolentino at 206-252-3714.

### Engravings Opportunity

*Steve Reynolds, Nathan Hale Foundation*

Honor your years at Nathan Hale with an engraving. We have two ways to participate: A) You can be one of 1500 people to inscribe a name in the entryway courtyard in front of the Performing Arts Center; B) Add your name and graduation year to the name plaques in the foyer. Staff, parents, PTSA and community members may also be included on staff and patron plaques. The entry courtyard is open to all as well. For more information, pick up a brochure in the school office. If you have questions, please call Steve Reynolds at 206-784-0625.

### News from the Nathan Hale Horticulture Program...

*Jessica Torvik, Hale Staff*

**Spring is here — is your garden ready?** Nathan Hale horticulture students have been working hard to prepare plants for your home and garden. We have a great variety of hanging baskets (including fuchsias, petunias, and mixed baskets), herbs, geraniums, and vegetable starts. We also have a nice selection of landscaping perennials and native trees and shrubs. Plant sales are on the following dates and times. Watch the *Daily Bulletin* for additional dates, and shop early for best selection.

- Friday, May 4            1:30 pm—4:30 pm (Early Bird Event)
- Friday, May 11        1:30 pm—4:30 pm (Mother's Day Weekend Event)
  - Saturday, May 12    8:30 am—2:30 pm
  - Sunday, May 13     8:30 am—12:30 pm
  - Friday, May 18      1:30 pm—4:30 pm



Please visit our greenhouse, located just south of the intersection of 36th Ave. NE and 110th St., one block east of Nathan Hale and Meadowbrook Community Center. Visit the horticultural page on the Hale website for more information.

**Horticulture students thank Ed Hume Seeds** This year Ed Hume Seed Company in Puyallup, WA donated all the vegetable seeds used to grow our starts. This company produces high-quality seeds well adapted to Pacific Northwest soils and climate. Thank you for your generous donation!

**Horticulture students also thank Lowe's and PTO** Last year, Hale's biology program received a generous "Toolbox for Education" grant from PTO and Lowe's Home Improvement stores. The \$5,000 grant was used to purchase tools and supplies to restore a section of Thornton Creek that runs through the Nathan Hale campus. Horticulture has also benefited from this grant as we are sharing and using the numerous garden tools — pruners, loppers, shovels, wheelbarrows, rakes and hand tools — purchased for this service project. Thank you to Lowe's and PTO for your generosity and support of environmental education at Nathan Hale High School.

**Did you know?...** The large piece of property that Hale uses for the horticulture program is owned by the City of Seattle and is part of the Meadowbrook Pond Water Detention Facility. Thank you to the City of Seattle for its ongoing support of our students and this valuable program.

The deadline for May's *Raider Reader* is Tuesday, April 17, 2007. E-mail items to Leanne at [Hawkins1022@msn.com](mailto:Hawkins1022@msn.com). You can also find our newsletter on-line, in full color, at Hale's website.

## BULLETIN BOARD: ANNOUNCEMENTS, EVENTS, RECOGNITION



### Coming to the PAC in May: *Urinetown, The Musical*

*Gabi McCarthy, Hale Performing Arts*

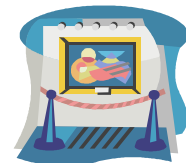
One of the most uproariously funny musicals in recent years, *Urinetown* is a hilarious tale of greed, corruption, love, and revolution in a time when water is worth its weight in gold. In a Gotham-like city, a terrible water shortage, caused by a 20-year drought, has led to a government-enforced ban on private toilets. The citizens must use public amenities, regulated by a single malevolent company (the UCG—“Urine Good Company”) that profits by charging admission for one of humanity’s most basic needs. Amid the people, a hero decides he’s had enough and plans a revolution to lead them all to freedom! Inspired by the works of Bertolt Brecht and Kurt Weill, *Urinetown* is an irreverently humorous satire in which no one is safe from scrutiny. Praised for reinvigorating the notion of what a musical could be, *Urinetown* catapults the “comedic romp” into the new millennium with its outrageous perspective, wickedly modern wit, and sustained ability to produce gales of unbridled laughter. *Urinetown* was nominated for an impressive 10 Tony Awards and won for Best Book, Score, and Direction. It also won the Drama Desk and Outer Critics Circle Awards for Best Musical. Don’t miss it!

**Performances: May 3, 4, 5 and 10, 11, 12 at 7:30 pm nightly, with one matinee May 12 at 2:00 pm.**

Ticket prices: \$12/adult and \$6/student, staff, seniors. Tickets go on sale online April 1. They will be sold at school during lunch starting April 26; tickets are available at the theater during the run of the show. For more information, check our new website at [nathanhale.org/musical](http://nathanhale.org/musical)!

### Art Show Alert!

*Barbara Kuznetz, Hale Staff*



A student art show will be held at HomeStreet Bank during May. Artwork from Drawing and Painting, as well as Ceramics, classes will be included and approximately 40 students will participate. An Opening for students, families and friends is planned for **May 9**. Look for more details in the May *Raider Reader*.

### Spree ‘07 News

*Lynn Wolf and Nina Wolsk, SPREE ‘07*

Senior parents, I’m sure you all realize how soon graduation will be here (and how many things our seniors must do before then). One thing you don’t want to forget is to get the SPREE ticket so your senior may attend our fabulous all-night after-graduation party. We have 18 tickets left at \$85; then the price increases to \$100. To order a ticket you can: Contact Barbara Brotherton at [copperandd@aol.com](mailto:copperandd@aol.com); Get an order form in the office and mail it in; Send a check to school on Tuesdays or Thursdays so your student may purchase a ticket at the SPREE Treats table (make the check payable to Nathan Hale SPREE 2007); Pick up a scholarship form in the counseling office, fill it out, and return it to the counseling office. **GET THOSE TICKETS NOW!!!!**

### Music Boosters News of Use

*Teresa Rich-Mackenzie, Music Boosters*

By the time you read this issue of the *Raider Reader*, the Music Department’s second fundraiser of the year—*Swing into Spring*—will be history. But the memories of a fun evening dancing to the West Seattle Swing Band will linger. In addition to that band, we enjoyed short sets performed by Hale music groups. The dance was such a success that Principal Hechtman remarked we would have to move the dance to the gym next year to accommodate the growing crowd!

Please join us:

**April 18:** Classical Concert, PAC

**May 21:** Triple Door performance

Check our new website for all the details!

**Thank you to the FedEx/Kinko’s on Sandpoint Way for our discounted copying!!**

## BULLETIN BOARD: ANNOUNCEMENTS, EVENTS, RECOGNITION

### Lacrosse — A Short History

*Bobby Laudig, Hale Lacrosse Coach*



November 22, 1877 marks the beginning of organized lacrosse in the U.S. as Manhattan College went against New York University in a game the Cherokees had called “The Little Brother of War.” Long ago, Native Americans prepared for war with a game that would last several days, span miles with goals on either side, and often result in shattered bones, lacerations, and occasional decapitations. The rules were simple: first point wins and the team with fewest injured players usually gets the win. The first French explorers in what is now the northeast U.S. and Canada called the game “la crosse” because the stick used resembled a bishop’s crosier, or cross. Another explanation for the name is that it comes from French field hockey, or “jeu de la crosse.”

Lacrosse was the first team sport organized in northeast Seattle, and that was done by Nathan Hale. The tradition continues as Hale athletes, outfitted with padded shoulders, hands and elbows, represent you and your school out on the lacrosse field this season. It’s an exciting game: come cheer for your lacrosse team as we take Division 2 by storm and then follow us to the Division 1 league next year.

### FCCLA STAR News

*Cindy Kegley, Hale Staff*

Nathan Hale students successfully participated in the FCCLA Regional STAR (Students Taking Action with Recognition) competition at Ingraham High School. Several schools in the greater King County area also participated.

Serving as judges were *Katie Behrens, Sophie Geist* and *Natalie Wilson*. Participating as presenters were *Emnet Gethun, Kiah Lesher, Laura D’Asaro* and *Riley King*. All presenters earned 90% or above and are invited to the state competition in Wenatchee in April. FCCLA is a national, student-led organization. Meetings are held each Wednesday during lunch in Ms. Kegley’s room. New members are welcome.



### Mariners Game to Benefit Raider Baseball

*Stuart Kahn, Hale Baseball Parent*

The Seattle Mariners have provided Nathan Hale Baseball with a wonderful fundraising opportunity: they have given us a block of 1000 \$18 seats for the **June 20** evening game at Safeco Field. Raider Baseball will offer these seats for \$14 each. For each ticket sold Hale Baseball receives \$7. This money will be used for field improvements and basic equipment needs. The June 20 game pits the Mariners against the Pittsburgh Pirates (this is the Pirates’ first visit to Seattle). Here’s a great opportunity to enjoy Safeco Field, the Mariners, AND support Nathan Hale Baseball. Order forms are available in the school office, through parents of Raider baseball players, or by e-mailing [skahn@idri.org](mailto:skahn@idri.org).

### Raider Baseball Plays Lakeside at Safeco

The Mariners are sponsoring a day of Seattle Metro High School Baseball at Safeco Field. On **April 5** Seattle Prep, Lakeside, West Seattle and Nathan Hale will play games at Safeco Field. At 4 pm West Seattle plays Seattle Prep; at 7 pm the Raiders play Lakeside. Admission to Safeco Field for these games is **free**. Come enjoy Safeco Field and cheer on the Raider Baseball Team.



### Raider Gear— It Lives!

*Deanna Matsen, All Sports Boosters*

Raider Gear is alive and well — thanks to a couple of parent volunteers and the support of the All Sports Booster Group! We aim to make Raider Gear **bigger** and **better** by reaching out to more Raiders through the marketing class offered at Hale 2007-08. We hope this class will make Raider Gear available through a student store in addition to our previous venues. So...Still want a HALE sweatshirt before school is out? They are available again in all sizes along with other Raider Gear items! NH Raider fleece blankets are great gifts and so useful at the spring sport games! Show your Raider pride and order yours today. Many items are reduced in price as we are changing inventory. It is a good time to pick up a great deal! Order forms are in the main office or, for info, contact Deanna Matsen: 206-523-7051 or [marc.matsen@comcast.net](mailto:marc.matsen@comcast.net).

Nathan Hale PTSA  
10750—30th Avenue NE  
Seattle, WA 98125

NON-PROFIT ORGANIZATION  
U.S. POSTAGE PAID  
SEATTLE, WASHINGTON  
PERMIT NO. 9984

**Nathan Hale High School**  
**PTSA**<sup>®</sup>  
*everychild. onevoice.*

Time-sensitive material—  
please deliver promptly



In this issue:  
Spring activities for every member of your family!