

DEMOGRAPHIC DATA

- * Enrollment
- * Living Condition
- * Eligibility for Free or Reduced-Price Lunch
- * Bilingual Students
- * Special Education Students

ENROLLMENT

Definition

This section summarizes the number and percentage of students enrolled in the District by ethnic group. Subsequent charts show similar figures for high school, middle school and elementary school students separately. Six years of data are shown and eighteen years of data are graphed.

Enrollment figures used in this report are from the first week in October of each year. The October 1 enrollment count has traditionally served as the District enrollment baseline. By October 1, most students have arrived at school and start of school year transfers between schools have stabilized. It also corresponds to the annual enrollment report to the Office of the Superintendent of Public Instruction (OSPI) showing the ethnic breakdown of schools (Form P105). Yearly enrollment projections, used for funding, are also based, in part, on the October 1 count.

The enrollment figures used in this report are “head counts” of all students in grades Kindergarten to 12 reported to OSPI. Headstart and preschool students are not counted here. Running Start students, part-time students and half-day kindergarten students are counted the same as other students.

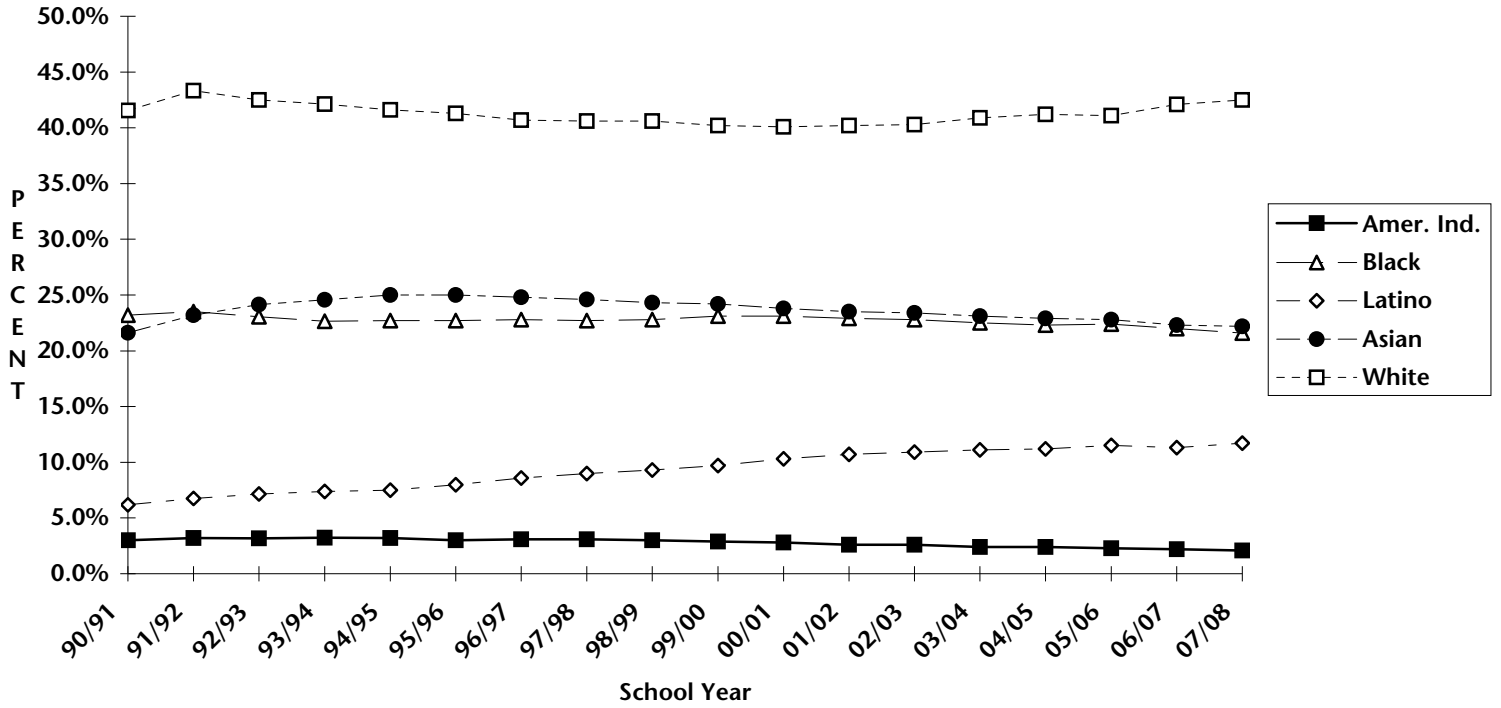
Results

The overall October 1 enrollment for 2007-2008 was 45,276, a decrease of 657 students from the 2006-2007 school year. The Seattle Public Schools were 42.5 percent White and 57.5 percent non-White on October 1, 2007.

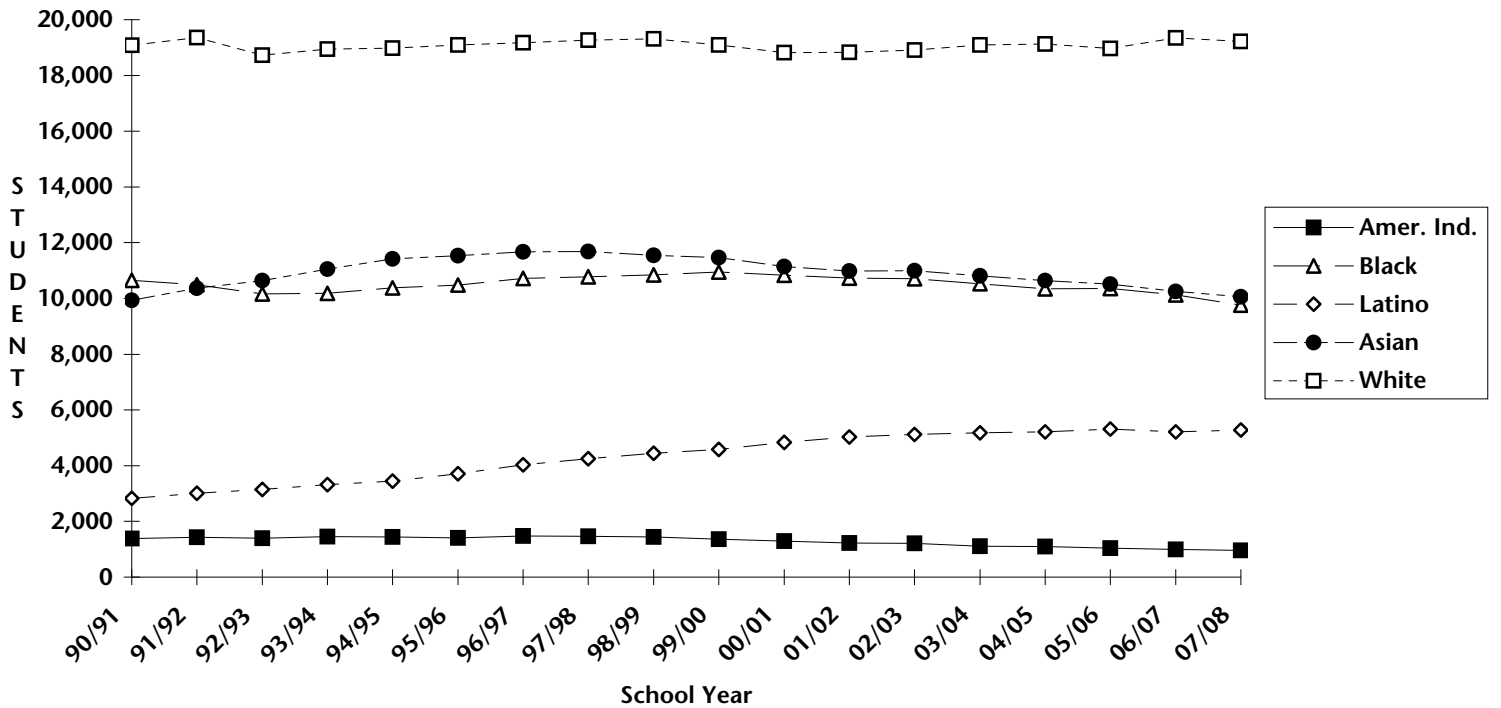
Total high school enrollment decreased by 527 students between 2006-2007 and 2007-2008. Asian high school enrollment in 2007-2008 increased as a percentage of the total enrollment for the first time since 1992-1993 (now shown here!), although the total number of Asian high school students fell by 86 students from 2006-2007. The Latino ethnic group has continually grown as a percent of total high school enrollment since 1990-1991. Middle school enrollment decreased by 358 students in 2007-2008 from the previous October to its lowest level in the six years shown. The middle school Latino ethnic group fell in number (but not percentage) for the first time since 1990-1991. Elementary school enrollment increased by 228 students from 2006-2007 to 2007-2008, the first observed yearly increase in elementary enrollment since 1998-1999. At the elementary level, the number of White students in elementary schools had been gradually declining until 2003-2004, but since that time has been rising in both number and percentage of elementary enrollment. The number and percentage of African American and Asian elementary students enrolled in Seattle Public Schools has been nearly similar since 1992-1993.



**Enrollment Trends by Percent of Ethnic Group
District Summary - All Regular and Alternative Schools
1990-1991 to 2007-2008**



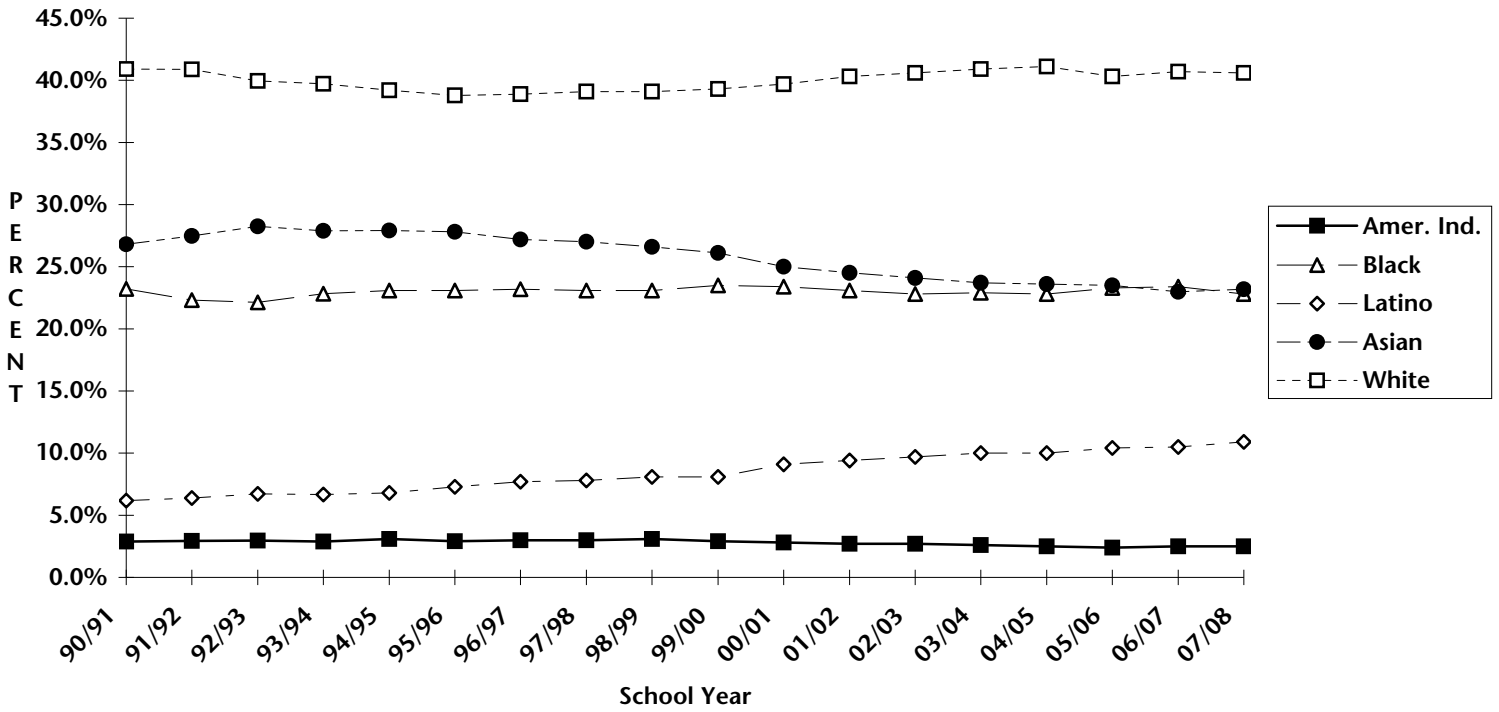
**Enrollment Trends by Ethnic Group
District Summary - All Regular and Alternative Schools
1990-1991 to 2007-2008**



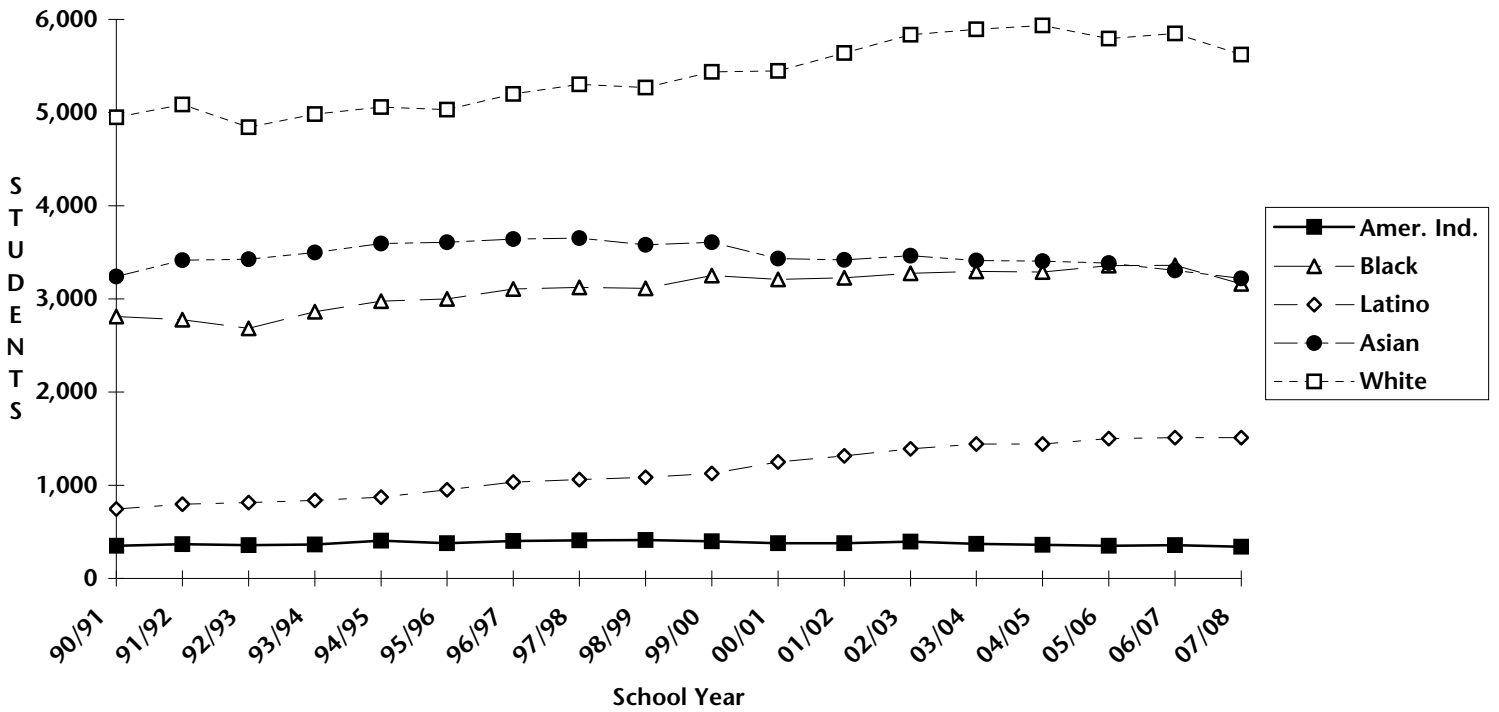
District Summary
Number and Percent of Students in each Ethnic Group
All Regular and Alternative Schools

| ETHNIC GROUP | 2002/2003 | | 2003/2004 | | 2004/2005 | | 2005/2006 | | 2006/2007 | | 2007/2008 | |
|-------------------------|-----------|--------|-----------|--------|-----------|--------|-----------|--------|-----------|--------|-----------|--------|
| | No. | % | No. | % | No. | % | No. | % | No. | % | No. | % |
| American Indians | | | | | | | | | | | | |
| American Indian | 843 | 1.8% | 769 | 1.6% | 737 | 1.6% | 688 | 1.5% | 653 | 1.4% | 631 | 1.4% |
| Alaska Native | 147 | 0.3% | 122 | 0.3% | 120 | 0.3% | 129 | 0.3% | 126 | 0.3% | 128 | 0.3% |
| Native American | 226 | 0.5% | 224 | 0.5% | 240 | 0.5% | 231 | 0.5% | 223 | 0.5% | 198 | 0.4% |
| Summary | 1,216 | 2.6% | 1,115 | 2.4% | 1,097 | 2.4% | 1,048 | 2.3% | 1,002 | 2.2% | 957 | 2.1% |
| African American | | | | | | | | | | | | |
| African American | 10,706 | 22.8% | 10,530 | 22.5% | 10,338 | 22.3% | 10,354 | 22.4% | 10,123 | 22.0% | 9,760 | 21.6% |
| Chicano/Latino | | | | | | | | | | | | |
| Latino Asian | 325 | 0.7% | 317 | 0.7% | 301 | 0.6% | 291 | 0.6% | 278 | 0.6% | 289 | 0.6% |
| Latino Black | 371 | 0.8% | 382 | 0.8% | 391 | 0.8% | 400 | 0.9% | 358 | 0.8% | 354 | 0.8% |
| Latino Indian | 2,587 | 5.5% | 2,534 | 5.4% | 2,493 | 5.4% | 2,599 | 5.6% | 2,605 | 5.7% | 2,693 | 5.9% |
| Latino White | 1,841 | 3.9% | 1,944 | 4.2% | 2,031 | 4.4% | 2,022 | 4.4% | 1,967 | 4.3% | 1,944 | 4.3% |
| Summary | 5,124 | 10.9% | 5,177 | 11.1% | 5,216 | 11.2% | 5,312 | 11.5% | 5,208 | 11.3% | 5,280 | 11.7% |
| Asian | | | | | | | | | | | | |
| Chinese | 2,405 | 5.1% | 2,464 | 5.3% | 2,483 | 5.3% | 2,556 | 5.5% | 2,552 | 5.6% | 2,548 | 5.6% |
| East Indian | 284 | 0.6% | 281 | 0.6% | 287 | 0.6% | 304 | 0.7% | 306 | 0.7% | 305 | 0.7% |
| Filipino | 2,133 | 4.5% | 2,068 | 4.4% | 2,015 | 4.3% | 1,958 | 4.2% | 1,848 | 4.0% | 1,823 | 4.0% |
| Japanese | 799 | 1.7% | 777 | 1.7% | 782 | 1.7% | 764 | 1.7% | 755 | 1.6% | 752 | 1.7% |
| Korean | 374 | 0.8% | 349 | 0.7% | 311 | 0.7% | 325 | 0.7% | 328 | 0.7% | 332 | 0.7% |
| Other Asian | 485 | 1.0% | 497 | 1.1% | 538 | 1.2% | 540 | 1.2% | 522 | 1.1% | 539 | 1.2% |
| Samoan | 448 | 1.0% | 438 | 0.9% | 390 | 0.8% | 351 | 0.8% | 332 | 0.7% | 298 | 0.7% |
| Other Southeast | 1,727 | 3.7% | 1,614 | 3.5% | 1,516 | 3.3% | 1,370 | 3.0% | 1,272 | 2.8% | 1,149 | 2.5% |
| Vietnamese | 2,347 | 5.0% | 2,320 | 5.0% | 2,318 | 5.0% | 2,344 | 5.1% | 2,334 | 5.1% | 2,313 | 5.1% |
| Summary | 11,002 | 23.4% | 10,808 | 23.1% | 10,640 | 22.9% | 10,512 | 22.8% | 10,249 | 22.3% | 10,059 | 22.2% |
| White | | | | | | | | | | | | |
| Gypsy | 26 | 0.1% | 26 | 0.1% | 23 | 0.0% | 25 | 0.1% | 21 | 0.0% | 15 | 0.0% |
| White | 18,891 | 40.2% | 19,074 | 40.8% | 19,102 | 41.2% | 18,949 | 41.0% | 19,330 | 42.1% | 19,205 | 42.4% |
| Summary | 18,917 | 40.3% | 19,100 | 40.9% | 19,125 | 41.2% | 18,974 | 41.1% | 19,351 | 42.1% | 19,220 | 42.5% |
| TOTAL | | | | | | | | | | | | |
| TOTAL | 46,965 | 100.0% | 46,730 | 100.0% | 46,416 | 100.0% | 46,200 | 100.0% | 45,933 | 100.0% | 45,276 | 100.0% |

**Enrollment Trends by Percent of Ethnic Group
All High School Students/Grades 9-12
1990-1991 to 2007-2008**



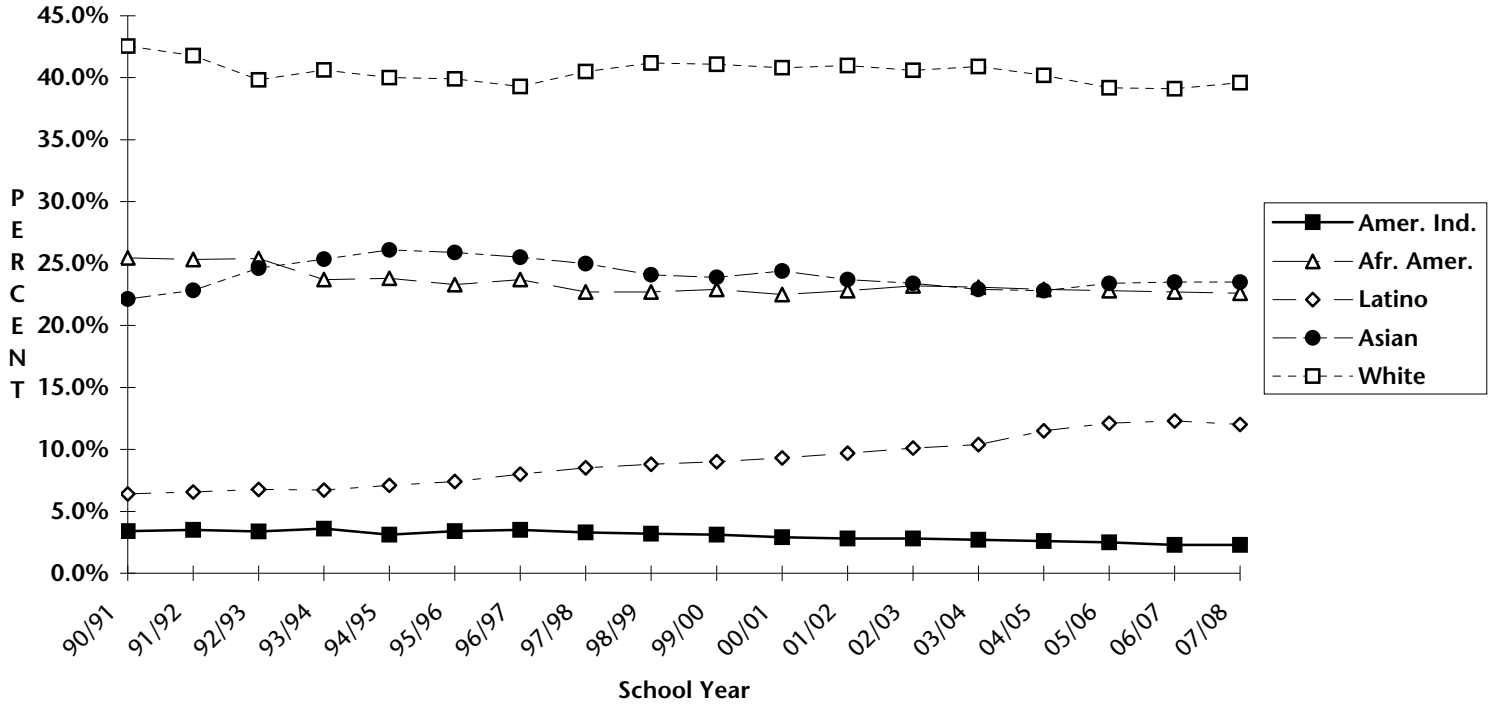
**Enrollment Trends by Ethnic Group
All High School Students/Grades 9-12
1990-1991 to 2007-2008**



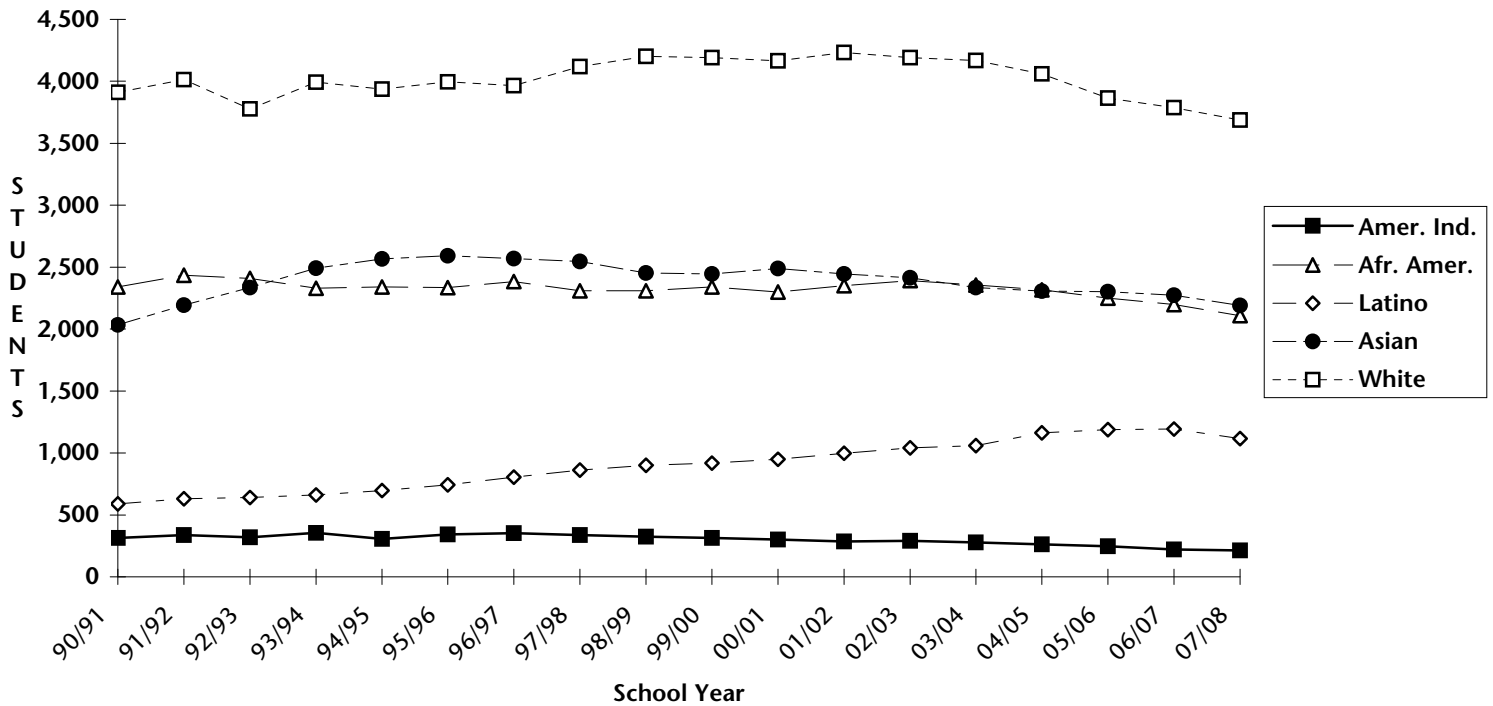
District Summary
Number and Percent of Students in each Ethnic Group
All High School Students/Grades 9-12

| ETHNIC GROUP | 2002/2003 | | 2003/2004 | | 2004/2005 | | 2005/2006 | | 2006/2007 | | 2007/2008 | |
|-------------------------|-----------|--------|-----------|--------|-----------|--------|-----------|--------|-----------|--------|-----------|--------|
| | No. | % | No. | % | No. | % | No. | % | No. | % | No. | % |
| American Indians | | | | | | | | | | | | |
| American Indian | 278 | 1.9% | 264 | 1.8% | 258 | 1.8% | 244 | 1.7% | 252 | 1.8% | 234 | 1.7% |
| Alaska Native | 53 | 0.4% | 43 | 0.3% | 42 | 0.3% | 36 | 0.3% | 36 | 0.3% | 39 | 0.3% |
| Native American | 63 | 0.4% | 65 | 0.5% | 62 | 0.4% | 71 | 0.5% | 71 | 0.5% | 68 | 0.5% |
| Summary | 394 | 2.7% | 372 | 2.6% | 362 | 2.5% | 351 | 2.4% | 359 | 2.5% | 341 | 2.5% |
| African American | | | | | | | | | | | | |
| African American | 3,274 | 22.8% | 3,295 | 22.9% | 3,289 | 22.8% | 3,358 | 23.3% | 3,360 | 23.4% | 3,163 | 22.8% |
| Chicano/Latino | | | | | | | | | | | | |
| Latino Asian | 90 | 0.6% | 83 | 0.6% | 89 | 0.6% | 84 | 0.6% | 80 | 0.6% | 91 | 0.7% |
| Latino Black | 111 | 0.8% | 102 | 0.7% | 96 | 0.7% | 106 | 0.7% | 101 | 0.7% | 104 | 0.8% |
| Latino Indian | 723 | 5.0% | 754 | 5.2% | 718 | 5.0% | 751 | 5.2% | 790 | 5.5% | 781 | 5.6% |
| Latino White | 469 | 3.3% | 503 | 3.5% | 540 | 3.7% | 560 | 3.9% | 541 | 3.8% | 537 | 3.9% |
| Summary | 1,393 | 9.7% | 1,442 | 10.0% | 1,443 | 10.0% | 1,501 | 10.4% | 1,512 | 10.5% | 1,513 | 10.9% |
| Asian | | | | | | | | | | | | |
| Chinese | 709 | 4.9% | 756 | 5.2% | 785 | 5.4% | 805 | 5.6% | 803 | 5.6% | 816 | 5.9% |
| East Indian | 99 | 0.7% | 95 | 0.7% | 99 | 0.7% | 105 | 0.7% | 95 | 0.7% | 85 | 0.6% |
| Filipino | 698 | 4.9% | 690 | 4.8% | 704 | 4.9% | 682 | 4.7% | 658 | 4.6% | 612 | 4.4% |
| Japanese | 233 | 1.6% | 228 | 1.6% | 215 | 1.5% | 215 | 1.5% | 225 | 1.6% | 228 | 1.6% |
| Korean | 131 | 0.9% | 117 | 0.8% | 102 | 0.7% | 94 | 0.7% | 86 | 0.6% | 94 | 0.7% |
| Other Asian | 131 | 0.9% | 121 | 0.8% | 144 | 1.0% | 138 | 1.0% | 145 | 1.0% | 143 | 1.0% |
| Samoan | 160 | 1.1% | 161 | 1.1% | 149 | 1.0% | 156 | 1.1% | 126 | 0.9% | 108 | 0.8% |
| Other Southeast | 613 | 4.3% | 598 | 4.1% | 576 | 4.0% | 535 | 3.7% | 498 | 3.5% | 435 | 3.1% |
| Vietnamese | 691 | 4.8% | 647 | 4.5% | 630 | 4.4% | 654 | 4.5% | 669 | 4.7% | 698 | 5.0% |
| Summary | 3,465 | 24.1% | 3,413 | 23.7% | 3,404 | 23.6% | 3,384 | 23.5% | 3,305 | 23.0% | 3,219 | 23.2% |
| White | | | | | | | | | | | | |
| Gypsy | 12 | 0.1% | 11 | 0.1% | 11 | 0.1% | 11 | 0.1% | 14 | 0.1% | 8 | 0.1% |
| White | 5,824 | 40.6% | 5,884 | 40.8% | 5,922 | 41.0% | 5,783 | 40.2% | 5,836 | 40.6% | 5,615 | 40.5% |
| Summary | 5,836 | 40.6% | 5,895 | 40.9% | 5,933 | 41.1% | 5,794 | 40.3% | 5,850 | 40.7% | 5,623 | 40.6% |
| TOTAL | | | | | | | | | | | | |
| TOTAL | 14,362 | 100.0% | 14,417 | 100.0% | 14,431 | 100.0% | 14,388 | 100.0% | 14,386 | 100.0% | 13,859 | 100.0% |

**Enrollment Trends by Percent of Ethnic Group
All Middle School Students/Grades 6-8
1990-1991 to 2007-2008**



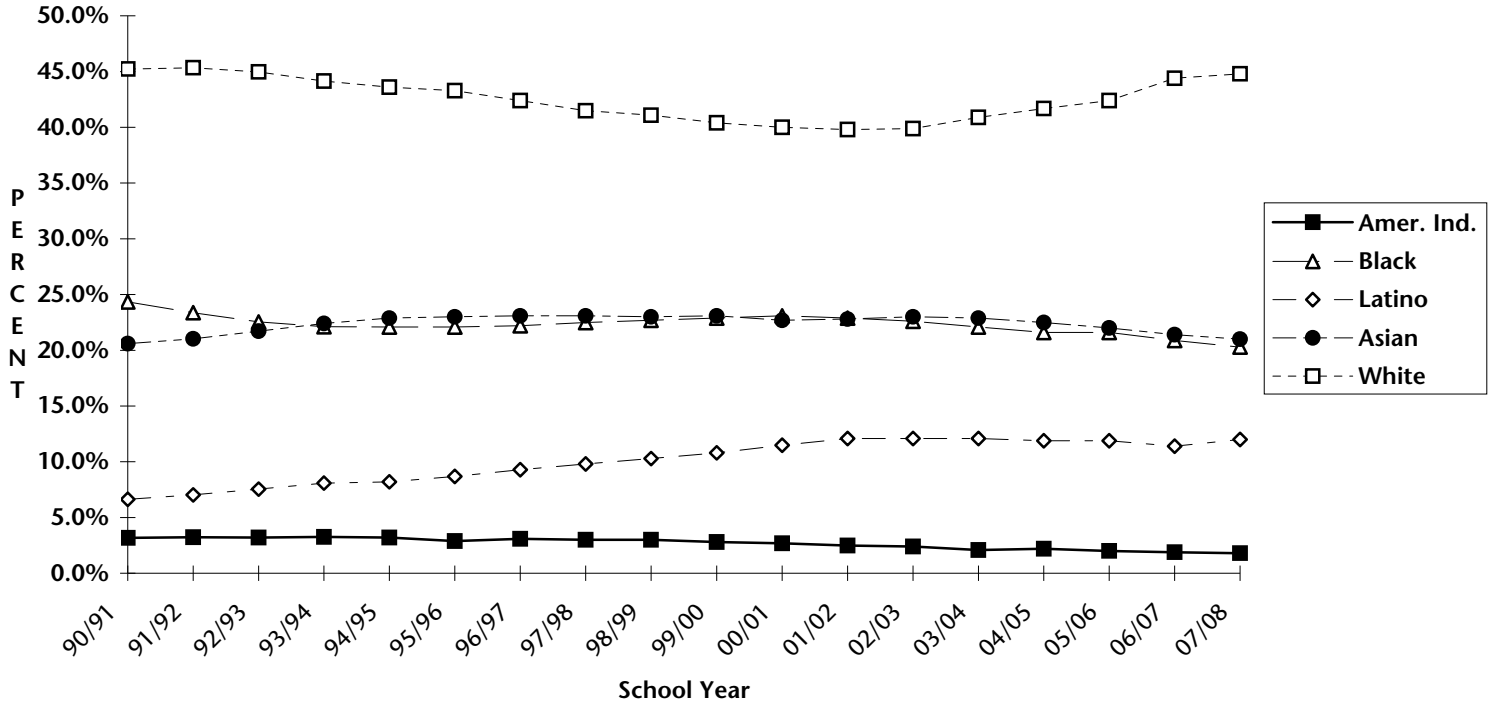
**Enrollment Trends by Ethnic Group
All Middle School Students/Grades 6-8
1990-1991 to 2007-2008**



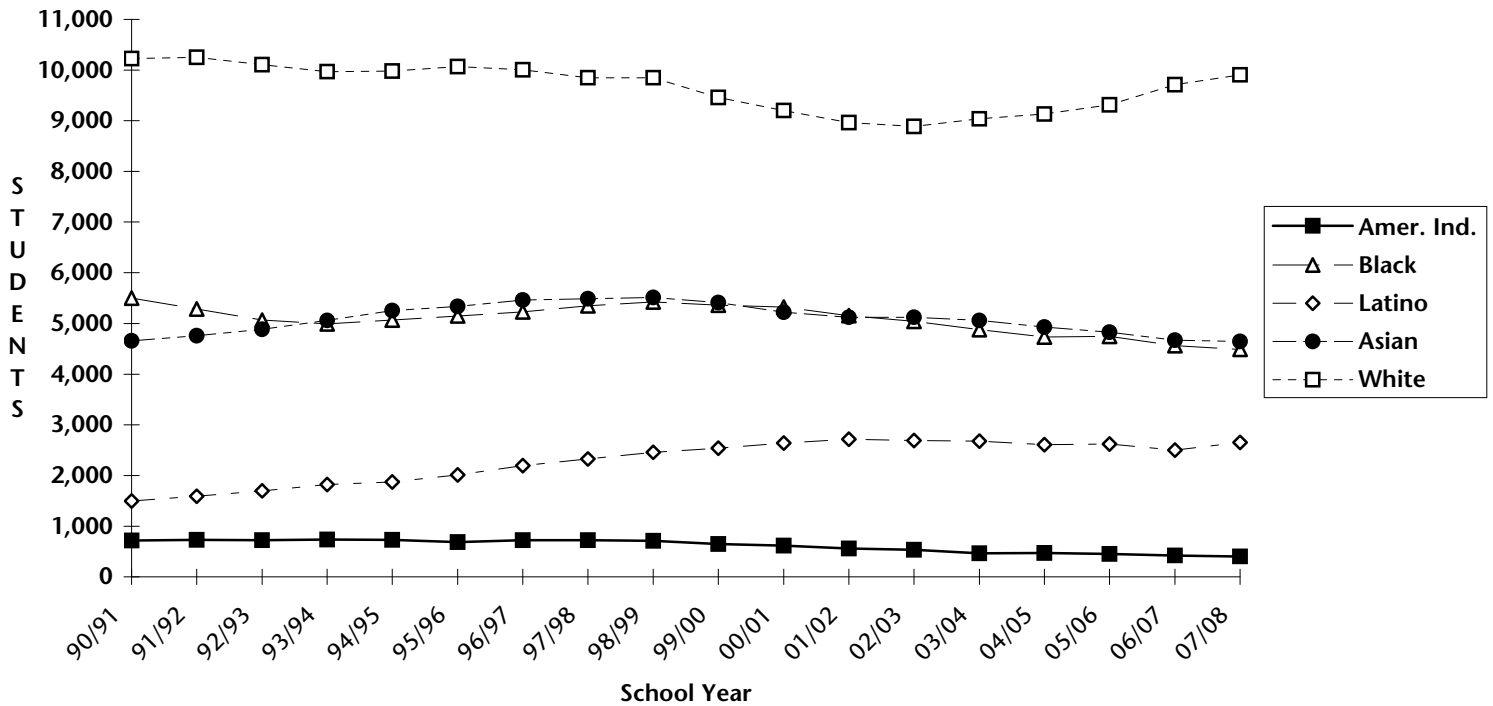
District Summary
Number and Percent of Students in each Ethnic Group
All Middle School Students/Grades 6-8

| ETHNIC GROUP | 2002/2003 | | 2003/2004 | | 2004/2005 | | 2005/2006 | | 2006/2007 | | 2007/2008 | |
|-------------------------|---------------|---------------|---------------|---------------|---------------|---------------|--------------|---------------|--------------|---------------|--------------|---------------|
| | No. | % | No. | % | No. | % | No. | % | No. | % | No. | % |
| American Indians | | | | | | | | | | | | |
| American Indian | 200 | 1.9% | 187 | 1.8% | 168 | 1.7% | 157 | 1.6% | 150 | 1.6% | 149 | 1.6% |
| Alaska Native | 34 | 0.3% | 30 | 0.3% | 29 | 0.3% | 29 | 0.3% | 22 | 0.2% | 23 | 0.2% |
| Native American | 56 | 0.5% | 61 | 0.6% | 66 | 0.7% | 61 | 0.6% | 50 | 0.5% | 42 | 0.5% |
| Summary | 290 | 2.8% | 278 | 2.7% | 263 | 2.6% | 247 | 2.5% | 222 | 2.3% | 214 | 2.3% |
| African American | | | | | | | | | | | | |
| African American | 2,392 | 23.2% | 2,356 | 23.1% | 2,318 | 22.9% | 2,249 | 22.8% | 2,199 | 22.7% | 2,108 | 22.6% |
| Chicano/Latino | | | | | | | | | | | | |
| Latino Asian | 58 | 0.6% | 67 | 0.7% | 62 | 0.6% | 58 | 0.6% | 74 | 0.8% | 68 | 0.7% |
| Latino Black | 67 | 0.6% | 90 | 0.9% | 94 | 0.9% | 97 | 1.0% | 94 | 1.0% | 80 | 0.9% |
| Latino Indian | 564 | 5.5% | 535 | 5.2% | 585 | 5.8% | 596 | 6.1% | 588 | 6.1% | 531 | 5.7% |
| Latino White | 353 | 3.4% | 368 | 3.6% | 421 | 4.2% | 437 | 4.4% | 438 | 4.5% | 437 | 4.7% |
| Summary | 1,042 | 10.1% | 1,060 | 10.4% | 1,162 | 11.5% | 1,188 | 12.1% | 1,194 | 12.3% | 1,116 | 12.0% |
| Asian | | | | | | | | | | | | |
| Chinese | 534 | 5.2% | 524 | 5.1% | 517 | 5.1% | 518 | 5.3% | 536 | 5.5% | 533 | 5.7% |
| East Indian | 63 | 0.6% | 58 | 0.6% | 46 | 0.5% | 50 | 0.5% | 48 | 0.5% | 61 | 0.7% |
| Filipino | 489 | 4.7% | 479 | 4.7% | 440 | 4.4% | 427 | 4.3% | 388 | 4.0% | 401 | 4.3% |
| Japanese | 165 | 1.6% | 160 | 1.6% | 166 | 1.6% | 174 | 1.8% | 165 | 1.7% | 163 | 1.7% |
| Korean | 75 | 0.7% | 63 | 0.6% | 62 | 0.6% | 68 | 0.7% | 69 | 0.7% | 63 | 0.7% |
| Other Asian | 95 | 0.9% | 97 | 1.0% | 94 | 0.9% | 107 | 1.1% | 103 | 1.1% | 109 | 1.2% |
| Samoan | 101 | 1.0% | 88 | 0.9% | 81 | 0.8% | 71 | 0.7% | 76 | 0.8% | 71 | 0.8% |
| Other Southeast | 420 | 4.1% | 371 | 3.6% | 346 | 3.4% | 292 | 3.0% | 286 | 3.0% | 260 | 2.8% |
| Vietnamese | 472 | 4.6% | 496 | 4.9% | 555 | 5.5% | 595 | 6.0% | 603 | 6.2% | 531 | 5.7% |
| Summary | 2,414 | 23.4% | 2,336 | 22.9% | 2,307 | 22.8% | 2,302 | 23.4% | 2,274 | 23.5% | 2,192 | 23.5% |
| White | | | | | | | | | | | | |
| Gypsy | 6 | 0.1% | 8 | 0.1% | 6 | 0.1% | 6 | 0.1% | 0 | 0.0% | 1 | 0.0% |
| White | 4,185 | 40.5% | 4,160 | 40.8% | 4,055 | 40.1% | 3,859 | 39.2% | 3,787 | 39.1% | 3,687 | 39.6% |
| Summary | 4,191 | 40.6% | 4,168 | 40.9% | 4,061 | 40.2% | 3,865 | 39.2% | 3,787 | 39.1% | 3,688 | 39.6% |
| TOTAL | 10,329 | 100.0% | 10,198 | 100.0% | 10,111 | 100.0% | 9,851 | 100.0% | 9,676 | 100.0% | 9,318 | 100.0% |

**Enrollment Trends by Percent of Ethnic Group
All Elementary School Students/Grades K-5
1990-1991 to 2007-2008**



**Enrollment Trends by Ethnic Group
All Elementary School Students/Grades K-5
1990-1991 to 2007-2008**



District Summary
Number and Percent of Students in each Ethnic Group
All Elementary School Students/Grades K-5

| ETHNIC GROUP | 2002/2003 | | 2003/2004 | | 2004/2005 | | 2005/2006 | | 2006/2007 | | 2007/2008 | |
|-------------------------|-----------|--------|-----------|--------|-----------|--------|-----------|--------|-----------|--------|-----------|--------|
| | No. | % | No. | % | No. | % | No. | % | No. | % | No. | % |
| American Indians | | | | | | | | | | | | |
| American Indian | 365 | 1.6% | 318 | 1.4% | 311 | 1.4% | 287 | 1.3% | 251 | 1.1% | 248 | 1.1% |
| Alaska Native | 60 | 0.3% | 49 | 0.2% | 49 | 0.2% | 64 | 0.3% | 68 | 0.3% | 66 | 0.3% |
| Native American | 107 | 0.5% | 98 | 0.4% | 112 | 0.5% | 99 | 0.5% | 102 | 0.5% | 88 | 0.4% |
| Summary | 532 | 2.4% | 465 | 2.1% | 472 | 2.2% | 450 | 2.0% | 421 | 1.9% | 402 | 1.8% |
| African American | | | | | | | | | | | | |
| African American | 5,040 | 22.6% | 4,879 | 22.1% | 4,731 | 21.6% | 4,747 | 21.6% | 4,564 | 20.9% | 4,489 | 20.3% |
| Chicano/Latino | | | | | | | | | | | | |
| Latino Asian | 177 | 0.8% | 167 | 0.8% | 150 | 0.7% | 149 | 0.7% | 124 | 0.6% | 130 | 0.6% |
| Latino Black | 193 | 0.9% | 190 | 0.9% | 201 | 0.9% | 197 | 0.9% | 163 | 0.7% | 170 | 0.8% |
| Latino Indian | 1,300 | 5.8% | 1,245 | 5.6% | 1,190 | 5.4% | 1,252 | 5.7% | 1,227 | 5.6% | 1,381 | 6.2% |
| Latino White | 1,019 | 4.6% | 1,073 | 4.9% | 1,070 | 4.9% | 1,025 | 4.7% | 988 | 4.5% | 970 | 4.4% |
| Summary | 2,689 | 12.1% | 2,675 | 12.1% | 2,611 | 11.9% | 2,623 | 11.9% | 2,502 | 11.4% | 2,651 | 12.0% |
| Asian | | | | | | | | | | | | |
| Chinese | 1,162 | 5.2% | 1,184 | 5.4% | 1,181 | 5.4% | 1,233 | 5.6% | 1,213 | 5.5% | 1,199 | 5.4% |
| East Indian | 122 | 0.5% | 128 | 0.6% | 142 | 0.6% | 149 | 0.7% | 163 | 0.7% | 159 | 0.7% |
| Filipino | 946 | 4.2% | 899 | 4.1% | 871 | 4.0% | 849 | 3.9% | 802 | 3.7% | 810 | 3.7% |
| Japanese | 401 | 1.8% | 389 | 1.8% | 401 | 1.8% | 375 | 1.7% | 365 | 1.7% | 361 | 1.6% |
| Korean | 168 | 0.8% | 169 | 0.8% | 147 | 0.7% | 163 | 0.7% | 173 | 0.8% | 175 | 0.8% |
| Other Asian | 259 | 1.2% | 279 | 1.3% | 300 | 1.4% | 295 | 1.3% | 274 | 1.3% | 287 | 1.3% |
| Samoan | 187 | 0.8% | 189 | 0.9% | 160 | 0.7% | 124 | 0.6% | 130 | 0.6% | 119 | 0.5% |
| Other Southeast | 694 | 3.1% | 645 | 2.9% | 594 | 2.7% | 543 | 2.5% | 488 | 2.2% | 454 | 2.1% |
| Vietnamese | 1,184 | 5.3% | 1,177 | 5.3% | 1,133 | 5.2% | 1,095 | 5.0% | 1,062 | 4.9% | 1,084 | 4.9% |
| Summary | 5,123 | 23.0% | 5,059 | 22.9% | 4,929 | 22.5% | 4,826 | 22.0% | 4,670 | 21.4% | 4,648 | 21.0% |
| White | | | | | | | | | | | | |
| Gypsy | 8 | 0.0% | 7 | 0.0% | 6 | 0.0% | 8 | 0.0% | 7 | 0.0% | 6 | 0.0% |
| White | 8,882 | 39.9% | 9,030 | 40.8% | 9,125 | 41.7% | 9,307 | 42.4% | 9,707 | 44.4% | 9,903 | 44.8% |
| Summary | 8,890 | 39.9% | 9,037 | 40.9% | 9,131 | 41.7% | 9,315 | 42.4% | 9,714 | 44.4% | 9,909 | 44.8% |
| TOTAL | | | | | | | | | | | | |
| TOTAL | 22,274 | 100.0% | 22,115 | 100.0% | 21,874 | 100.0% | 21,961 | 100.0% | 21,871 | 100.0% | 22,099 | 100.0% |

LIVING CONDITION

Definition

This section shows the number and percentage of students not living with both parents. The data are obtained from students or parents during registration. When parents or guardians register their children for school they indicate their student's living situation, e.g. living with both parents, or living with mother, father, guardian, agency, alone, or married. For this report, all living situations other than "Living with both parents" are combined. Data are taken from the same October 1 computer files as are enrollment data. Students without a valid code for "living situation" are considered "not living with both parents" in these charts.

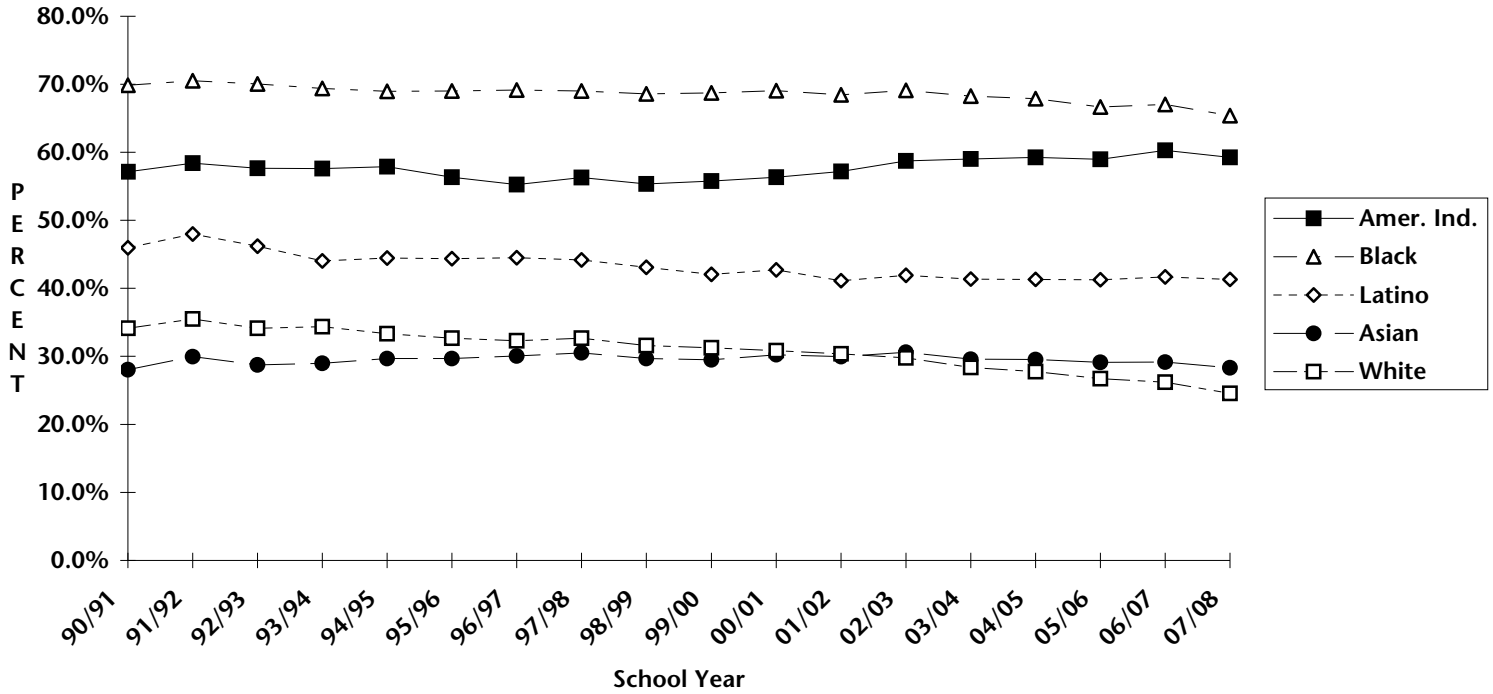
Results

For the District as a whole, 36.9 percent of all students are not living with both parents in the 2007-2008 school year. The number of students not living with both parents fell 919 students in 2007-2008 from 2006-2007 to the lowest number and percentage in the eighteen years shown of students not living with both parents. All ethnic groups showed a decrease from the previous year in the percentage of students not living with both parents. The percentage of students not living with both parents continues to be highest for the African American ethnic group (65.4%).

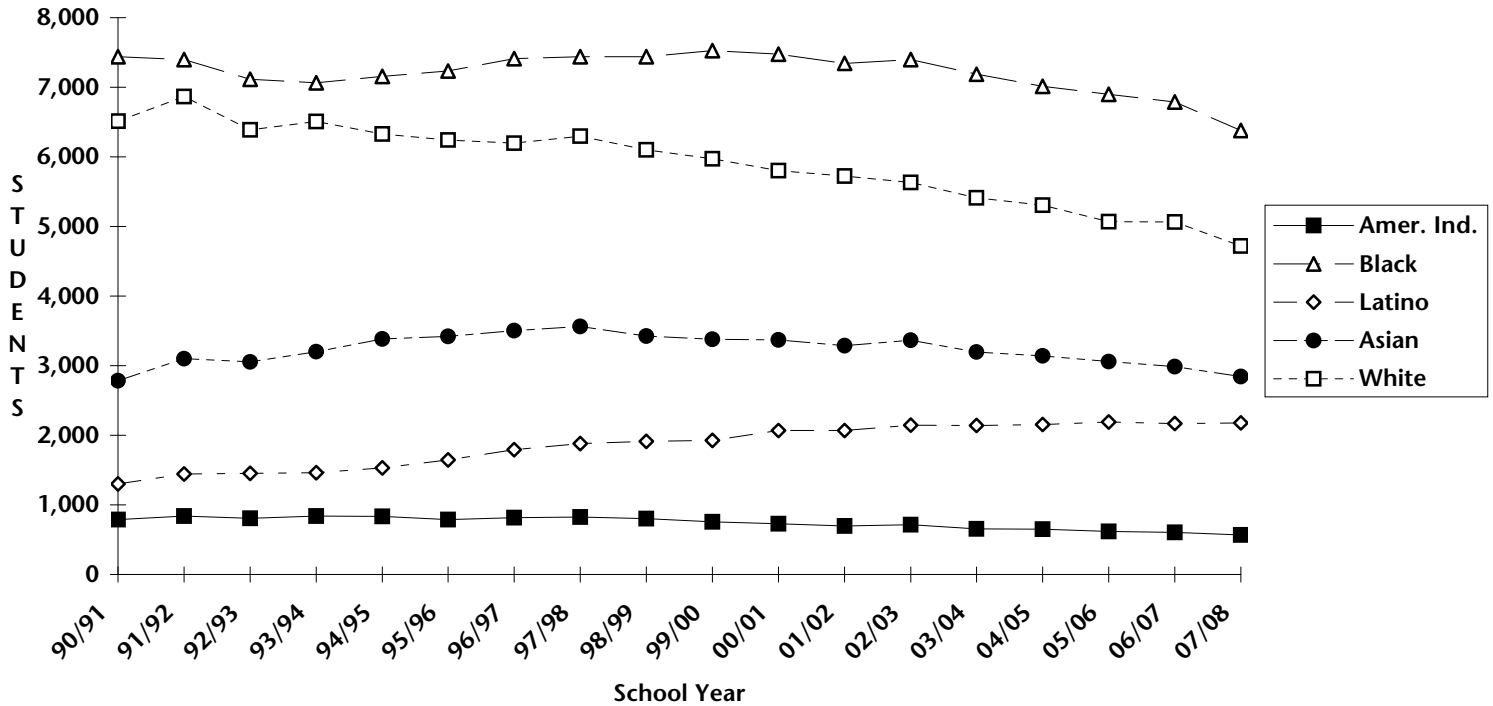
As in past years, the percentage of high school students not living with both parents is slightly higher than with middle or elementary school students. The total percentage of high school students not living with both parents in 2007-2008 fell from 2006-2007 by 1.3 percentage points to 44.1% of the high school population, with the majority of this decrease coming from notable drops in the number of African American and White students who do not live with both parents. In middle schools, 39.8% of students do not live with both parents in 2007-2008, a decrease of 214 students and 0.9 percentage points from 2006-2007. The number and percentage of students not living with both parents at elementary schools is the lowest level in the eighteen years shown, with a decline of 288 students from 2006-2007 to 6,868, or 31.1%, in 2007-2008. The total number of students at the elementary level not living with both parents has fallen by 2,758 since 1997-1998, when 9,626 elementary students were not living with both parents, a decrease of 28.7%.



**Students Not Living With Both Parents by Percent of Ethnic Group
District Summary - All Regular and Alternative Schools
1990-1991 to 2007-2008**



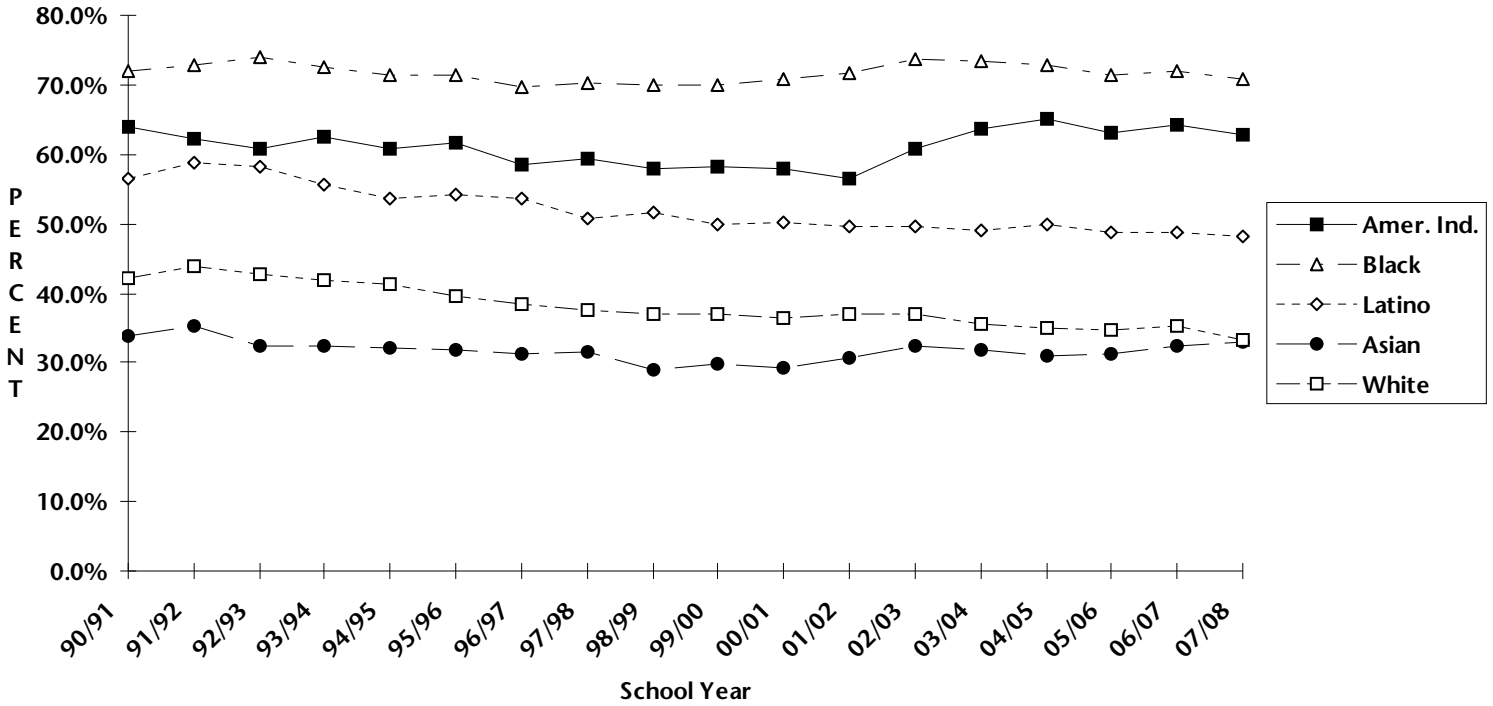
**Students Not Living With Both Parents by Ethnic Group
District Summary - All Regular and Alternative Schools
1990-1991 to 2007-2008**



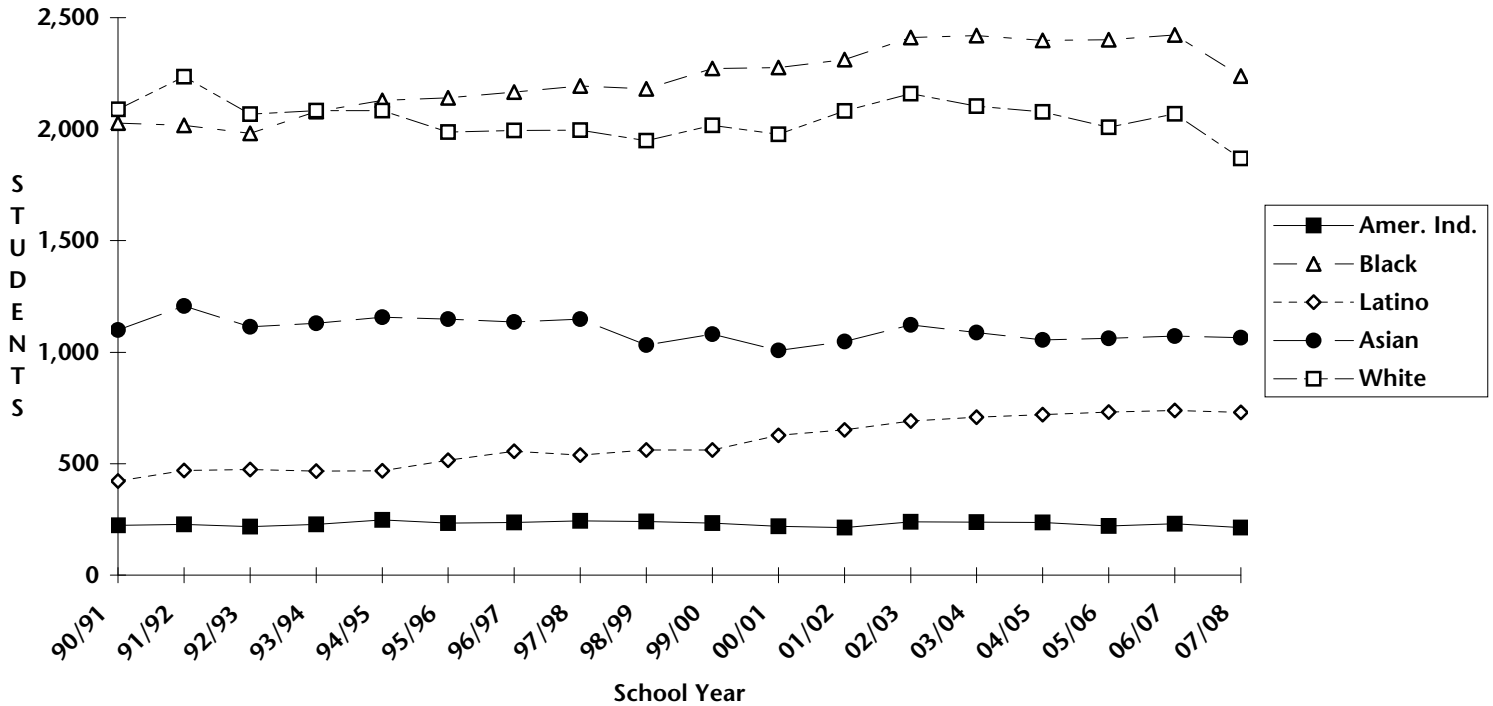
District Summary
Number and Percent of Students in each Ethnic Group Not Living With Both Parents
All Regular and Alternative Schools

| ETHNIC GROUP | 2002/2003 | | 2003/2004 | | 2004/2005 | | 2005/2006 | | 2006/2007 | | 2007/2008 | |
|-------------------------|-----------|-------|-----------|-------|-----------|-------|-----------|-------|-----------|-------|-----------|-------|
| | No. | % | No. | % | No. | % | No. | % | No. | % | No. | % |
| American Indians | | | | | | | | | | | | |
| American Indian | 475 | 56.3% | 437 | 56.8% | 423 | 57.4% | 382 | 55.5% | 381 | 58.3% | 356 | 56.4% |
| Alaska Native | 94 | 63.9% | 76 | 62.3% | 74 | 61.7% | 82 | 63.6% | 83 | 65.9% | 83 | 64.8% |
| Native American | 145 | 64.2% | 145 | 64.7% | 153 | 63.8% | 154 | 66.7% | 140 | 62.8% | 128 | 64.6% |
| Summary | 714 | 58.7% | 658 | 59.0% | 650 | 59.3% | 618 | 59.0% | 604 | 60.3% | 567 | 59.2% |
| African American | | | | | | | | | | | | |
| African American | 7,397 | 69.1% | 7,186 | 68.2% | 7,016 | 67.9% | 6,901 | 66.7% | 6,787 | 67.0% | 6,382 | 65.4% |
| Chicano/Latino | | | | | | | | | | | | |
| Latino Asian | 104 | 32.0% | 100 | 31.5% | 105 | 34.9% | 112 | 38.5% | 114 | 41.0% | 113 | 39.1% |
| Latino Black | 237 | 63.9% | 251 | 65.7% | 261 | 66.8% | 269 | 67.3% | 253 | 70.7% | 245 | 69.2% |
| Latino Indian | 1,086 | 42.0% | 1,060 | 41.8% | 1,038 | 41.6% | 1,068 | 41.1% | 1,101 | 42.3% | 1,112 | 41.3% |
| Latino White | 721 | 39.2% | 730 | 37.6% | 751 | 37.0% | 744 | 36.8% | 703 | 35.7% | 711 | 36.6% |
| Summary | 2,148 | 41.9% | 2,141 | 41.4% | 2,155 | 41.3% | 2,193 | 41.3% | 2,171 | 41.7% | 2,181 | 41.3% |
| Asian | | | | | | | | | | | | |
| Chinese | 399 | 16.6% | 397 | 16.1% | 389 | 15.7% | 414 | 16.2% | 403 | 15.8% | 408 | 16.0% |
| East Indian | 59 | 20.8% | 54 | 19.2% | 56 | 19.5% | 64 | 21.1% | 57 | 18.6% | 51 | 16.7% |
| Filipino | 658 | 30.8% | 624 | 30.2% | 609 | 30.2% | 593 | 30.3% | 572 | 31.0% | 563 | 30.9% |
| Japanese | 152 | 19.0% | 139 | 17.9% | 157 | 20.1% | 150 | 19.6% | 142 | 18.8% | 130 | 17.3% |
| Korean | 81 | 21.7% | 64 | 18.3% | 66 | 21.2% | 68 | 20.9% | 62 | 18.9% | 57 | 17.2% |
| Other Asian | 193 | 39.8% | 186 | 37.4% | 189 | 35.1% | 191 | 35.4% | 185 | 35.4% | 179 | 33.2% |
| Samoan | 221 | 49.3% | 201 | 45.9% | 181 | 46.4% | 158 | 45.0% | 156 | 47.0% | 130 | 43.6% |
| Other Southeast | 775 | 44.9% | 727 | 45.0% | 679 | 44.8% | 615 | 44.9% | 584 | 45.9% | 526 | 45.8% |
| Vietnamese | 828 | 35.3% | 805 | 34.7% | 814 | 35.1% | 808 | 34.5% | 825 | 35.3% | 802 | 34.7% |
| Summary | 3,366 | 30.6% | 3,197 | 29.6% | 3,140 | 29.5% | 3,061 | 29.1% | 2,986 | 29.1% | 2,846 | 28.3% |
| White | | | | | | | | | | | | |
| Gypsy | 17 | 65.4% | 17 | 65.4% | 14 | 60.9% | 17 | 68.0% | 12 | 57.1% | 8 | 53.3% |
| White | 5,617 | 29.7% | 5,398 | 28.3% | 5,292 | 27.7% | 5,053 | 26.7% | 5,054 | 26.1% | 4,711 | 24.5% |
| Summary | 5,634 | 29.8% | 5,415 | 28.4% | 5,306 | 27.7% | 5,070 | 26.7% | 5,066 | 26.2% | 4,719 | 24.6% |
| TOTAL | | | | | | | | | | | | |
| TOTAL | 19,259 | 41.0% | 18,597 | 39.8% | 18,267 | 39.4% | 17,843 | 38.6% | 17,614 | 38.3% | 16,695 | 36.9% |

Students Not Living With Both Parents by Percent of Ethnic Group
All High School Students/Grades 9-12
1990-1991 to 2007-2008



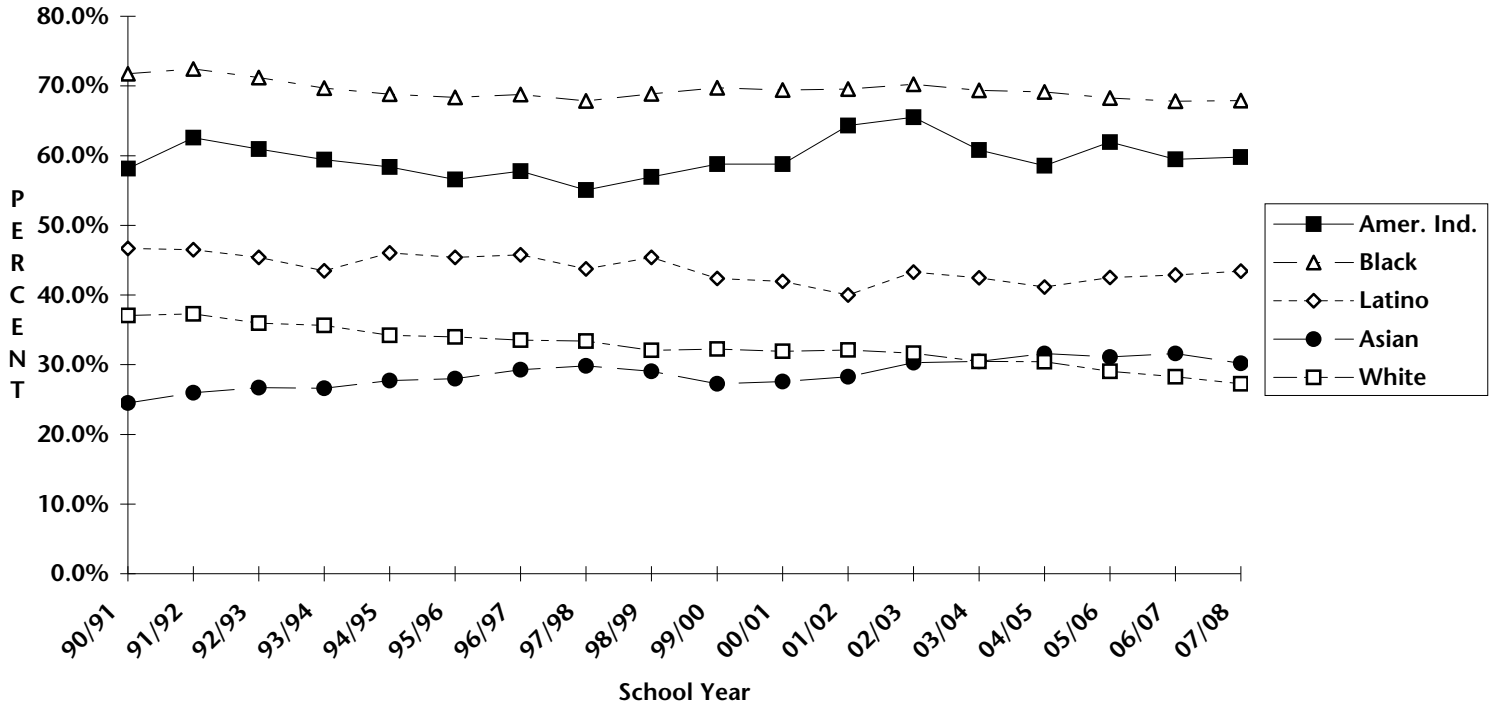
Students Not Living With Both Parents by Ethnic Group
All High School Students/Grades 9-12
1990-1991 to 2007-2008



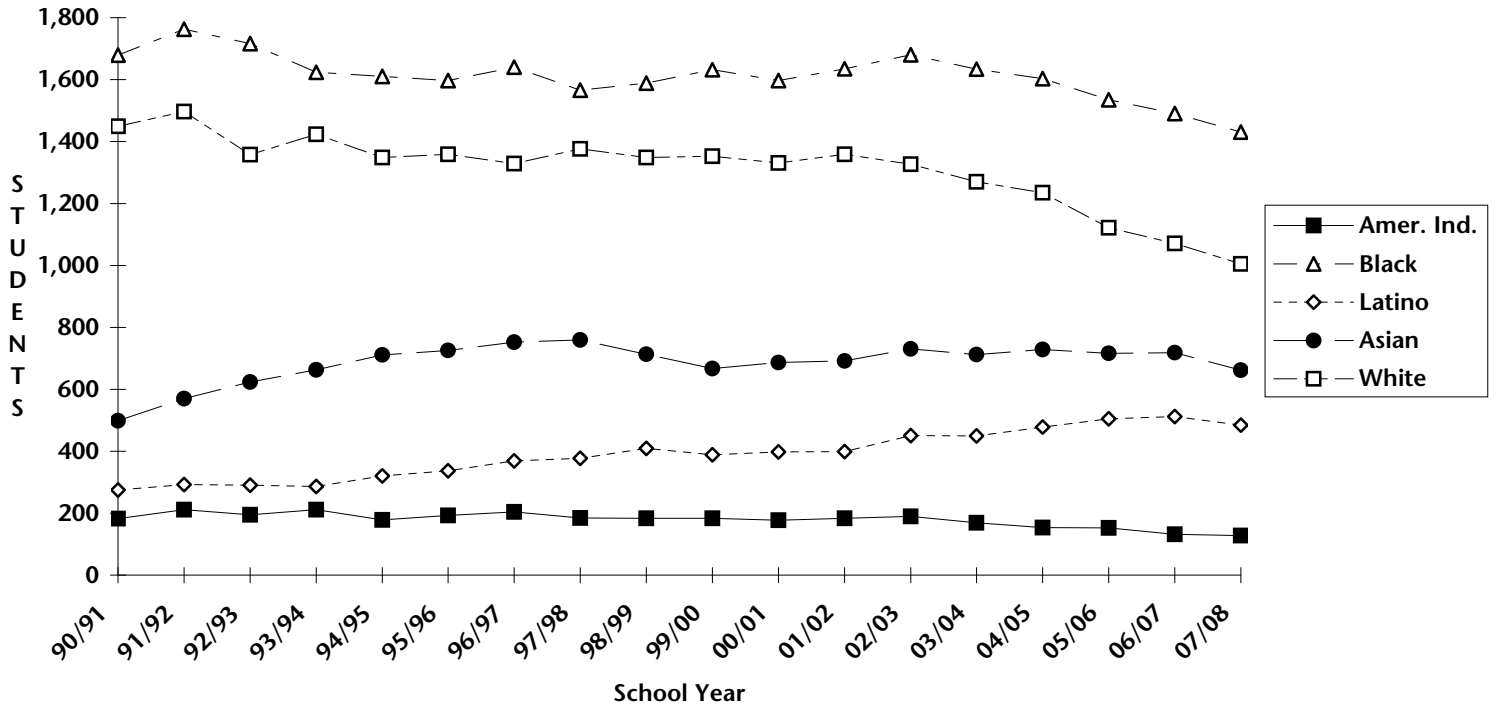
District Summary
Number and Percent of Students in each Ethnic Group Not Living With Both Parents
All High School Students/Grades 9-12

| ETHNIC GROUP | 2002/2003 | | 2003/2004 | | 2004/2005 | | 2005/2006 | | 2006/2007 | | 2007/2008 | |
|-------------------------|-----------|-------|-----------|-------|-----------|-------|-----------|-------|-----------|-------|-----------|-------|
| | No. | % | No. | % | No. | % | No. | % | No. | % | No. | % |
| American Indians | | | | | | | | | | | | |
| American Indian | 165 | 59.4% | 164 | 62.1% | 166 | 64.3% | 147 | 60.2% | 157 | 62.3% | 138 | 59.0% |
| Alaska Native | 34 | 64.2% | 29 | 67.4% | 29 | 69.0% | 23 | 63.9% | 24 | 66.7% | 27 | 69.2% |
| Native American | 40 | 63.5% | 44 | 67.7% | 41 | 66.1% | 51 | 71.8% | 50 | 70.4% | 49 | 72.1% |
| Summary | 239 | 60.7% | 237 | 63.7% | 236 | 65.2% | 221 | 63.0% | 231 | 64.3% | 214 | 62.8% |
| African American | 2,411 | 73.6% | 2,420 | 73.4% | 2,399 | 72.9% | 2,401 | 71.5% | 2,422 | 72.1% | 2,238 | 70.8% |
| Chicano/Latino | | | | | | | | | | | | |
| Latino Asian | 32 | 35.6% | 25 | 30.1% | 33 | 37.1% | 33 | 39.3% | 37 | 46.3% | 34 | 37.4% |
| Latino Black | 69 | 62.2% | 73 | 71.6% | 68 | 70.8% | 74 | 69.8% | 68 | 67.3% | 69 | 66.3% |
| Latino Indian | 365 | 50.5% | 382 | 50.7% | 374 | 52.1% | 378 | 50.3% | 417 | 52.8% | 405 | 51.9% |
| Latino White | 226 | 48.2% | 229 | 45.5% | 245 | 45.4% | 246 | 43.9% | 217 | 40.1% | 222 | 41.3% |
| Summary | 692 | 49.7% | 709 | 49.2% | 720 | 49.9% | 731 | 48.7% | 739 | 48.9% | 730 | 48.2% |
| Asian | | | | | | | | | | | | |
| Chinese | 139 | 19.6% | 137 | 18.1% | 138 | 17.6% | 148 | 18.4% | 152 | 18.9% | 168 | 20.6% |
| East Indian | 26 | 26.3% | 18 | 18.9% | 19 | 19.2% | 28 | 26.7% | 23 | 24.2% | 19 | 22.4% |
| Filipino | 251 | 36.0% | 237 | 34.3% | 230 | 32.7% | 223 | 32.7% | 217 | 33.0% | 202 | 33.0% |
| Japanese | 47 | 20.2% | 51 | 22.4% | 50 | 23.3% | 54 | 25.1% | 53 | 23.6% | 54 | 23.7% |
| Korean | 29 | 22.1% | 25 | 21.4% | 25 | 24.5% | 31 | 33.0% | 27 | 31.4% | 24 | 25.5% |
| Other Asian | 67 | 51.1% | 56 | 46.3% | 58 | 40.3% | 50 | 36.2% | 52 | 35.9% | 52 | 36.4% |
| Samoan | 91 | 56.9% | 91 | 56.5% | 81 | 54.4% | 77 | 49.4% | 62 | 49.2% | 47 | 43.5% |
| Other Southeast | 267 | 43.6% | 281 | 47.0% | 272 | 47.2% | 251 | 46.9% | 250 | 50.2% | 228 | 52.4% |
| Vietnamese | 205 | 29.7% | 192 | 29.7% | 182 | 28.9% | 200 | 30.6% | 236 | 35.3% | 271 | 38.8% |
| Summary | 1,122 | 32.4% | 1,088 | 31.9% | 1,055 | 31.0% | 1,062 | 31.4% | 1,072 | 32.4% | 1,065 | 33.1% |
| White | | | | | | | | | | | | |
| Gypsy | 10 | 83.3% | 7 | 63.6% | 7 | 63.6% | 9 | 81.8% | 8 | 57.1% | 5 | 62.5% |
| White | 2,149 | 36.9% | 2,097 | 35.6% | 2,070 | 35.0% | 2,000 | 34.6% | 2,061 | 35.3% | 1,864 | 33.2% |
| Summary | 2,159 | 37.0% | 2,104 | 35.7% | 2,077 | 35.0% | 2,009 | 34.7% | 2,069 | 35.4% | 1,869 | 33.2% |
| TOTAL | 6,623 | 46.1% | 6,558 | 45.5% | 6,487 | 45.0% | 6,424 | 44.6% | 6,533 | 45.4% | 6,116 | 44.1% |

Students Not Living With Both Parents by Percent of Ethnic Group
All Middle School Students/Grades 6-8
1990-1991 to 2007-2008



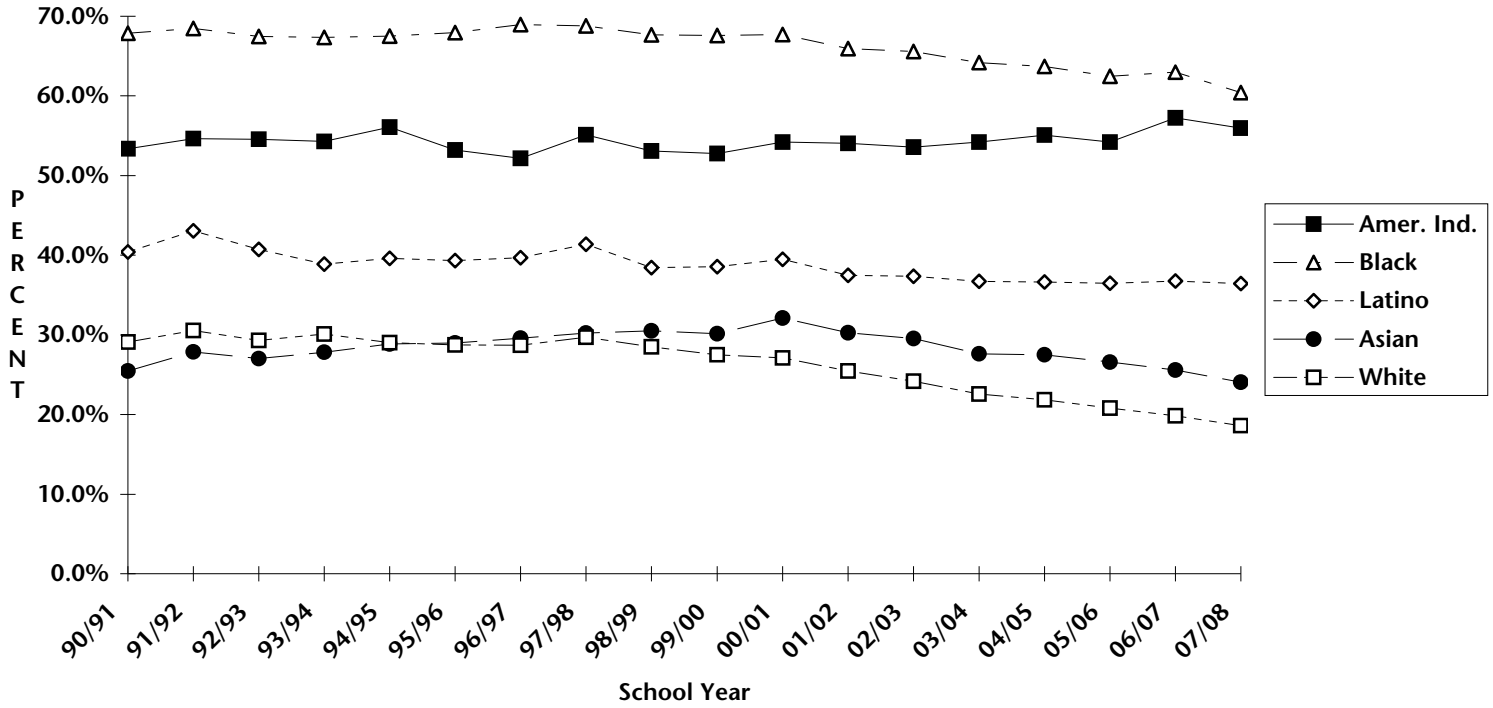
Students Not Living With Both Parents by Ethnic Group
All Middle School Students/Grades 6-8
1990-1991 to 2007-2008



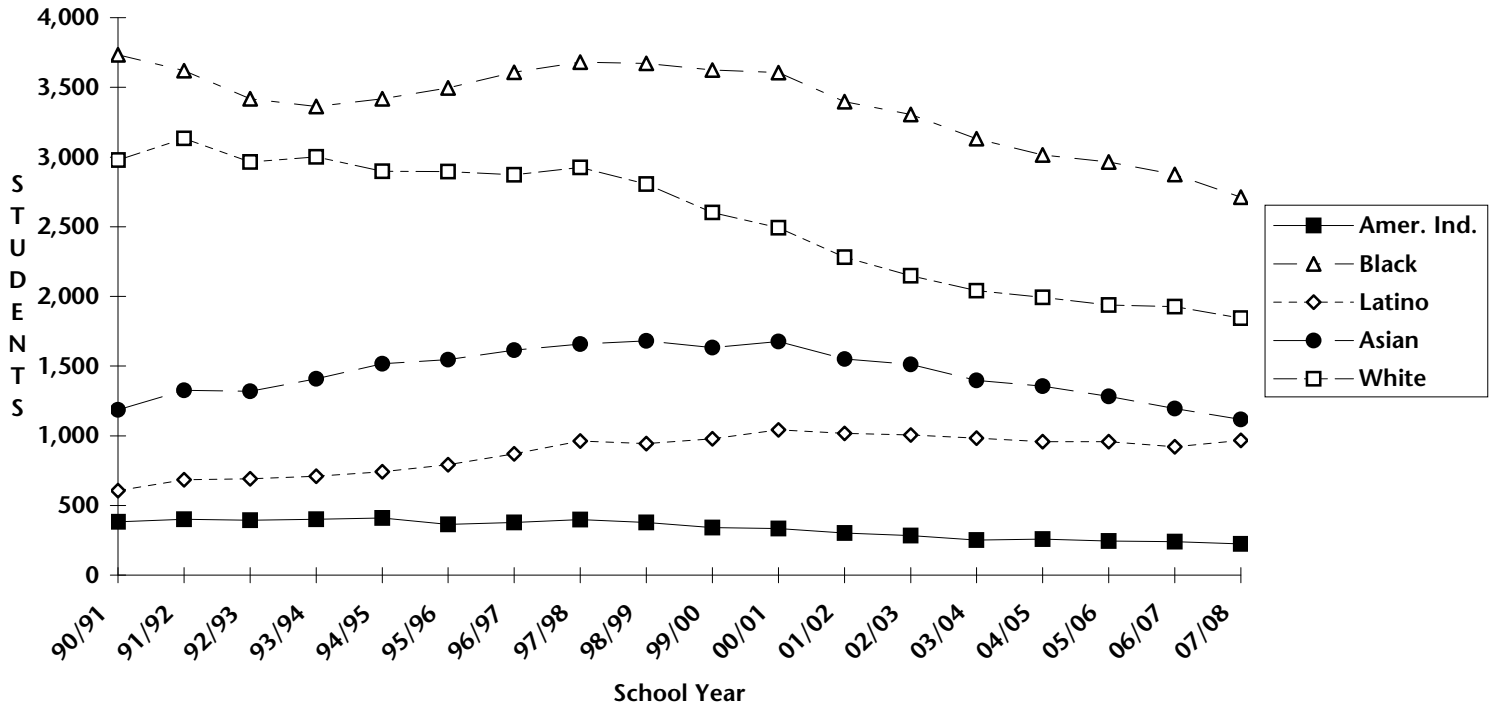
District Summary
Number and Percent of Students in each Ethnic Group Not Living With Both Parents
All Middle School Students/Grades 6-8

| ETHNIC GROUP | 2002/2003 | | 2003/2004 | | 2004/2005 | | 2005/2006 | | 2006/2007 | | 2007/2008 | |
|-------------------------|-----------|-------|-----------|-------|-----------|-------|-----------|-------|-----------|-------|-----------|-------|
| | No. | % | No. | % | No. | % | No. | % | No. | % | No. | % |
| American Indians | | | | | | | | | | | | |
| American Indian | 126 | 63.0% | 108 | 57.8% | 93 | 55.4% | 91 | 58.0% | 86 | 57.3% | 83 | 55.7% |
| Alaska Native | 24 | 70.6% | 19 | 63.3% | 17 | 58.6% | 19 | 65.5% | 15 | 68.2% | 17 | 73.9% |
| Native American | 40 | 71.4% | 42 | 68.9% | 44 | 66.7% | 43 | 70.5% | 31 | 62.0% | 28 | 66.7% |
| Summary | 190 | 65.5% | 169 | 60.8% | 154 | 58.6% | 153 | 61.9% | 132 | 59.5% | 128 | 59.8% |
| African American | | | | | | | | | | | | |
| African American | 1,680 | 70.2% | 1,634 | 69.4% | 1,603 | 69.2% | 1,535 | 68.3% | 1,491 | 67.8% | 1,431 | 67.9% |
| Chicano/Latino | | | | | | | | | | | | |
| Latino Asian | 23 | 39.7% | 26 | 38.8% | 16 | 25.8% | 17 | 29.3% | 20 | 27.0% | 26 | 38.2% |
| Latino Black | 46 | 68.7% | 57 | 63.3% | 61 | 64.9% | 64 | 66.0% | 69 | 73.4% | 55 | 68.8% |
| Latino Indian | 243 | 43.1% | 227 | 42.4% | 235 | 40.2% | 239 | 40.1% | 243 | 41.3% | 223 | 42.0% |
| Latino White | 139 | 39.4% | 140 | 38.0% | 166 | 39.4% | 185 | 42.3% | 180 | 41.1% | 181 | 41.4% |
| Summary | 451 | 43.3% | 450 | 42.5% | 478 | 41.1% | 505 | 42.5% | 512 | 42.9% | 485 | 43.5% |
| Asian | | | | | | | | | | | | |
| Chinese | 79 | 14.8% | 90 | 17.2% | 91 | 17.6% | 86 | 16.6% | 83 | 15.5% | 91 | 17.1% |
| East Indian | 14 | 22.2% | 13 | 22.4% | 12 | 26.1% | 11 | 22.0% | 9 | 18.8% | 9 | 14.8% |
| Filipino | 145 | 29.7% | 134 | 28.0% | 124 | 28.2% | 117 | 27.4% | 125 | 32.2% | 138 | 34.4% |
| Japanese | 34 | 20.6% | 32 | 20.0% | 36 | 21.7% | 31 | 17.8% | 30 | 18.2% | 28 | 17.2% |
| Korean | 15 | 20.0% | 12 | 19.0% | 16 | 25.8% | 15 | 22.1% | 13 | 18.8% | 11 | 17.5% |
| Other Asian | 35 | 36.8% | 27 | 27.8% | 29 | 30.9% | 46 | 43.0% | 49 | 47.6% | 44 | 40.4% |
| Samoan | 53 | 52.5% | 37 | 42.0% | 31 | 38.3% | 29 | 40.8% | 31 | 40.8% | 28 | 39.4% |
| Other Southeast | 189 | 45.0% | 168 | 45.3% | 160 | 46.2% | 136 | 46.6% | 134 | 46.9% | 120 | 46.2% |
| Vietnamese | 167 | 35.4% | 199 | 40.1% | 230 | 41.4% | 245 | 41.2% | 245 | 40.6% | 193 | 36.3% |
| Summary | 731 | 30.3% | 712 | 30.5% | 729 | 31.6% | 716 | 31.1% | 719 | 31.6% | 662 | 30.2% |
| White | | | | | | | | | | | | |
| Gypsy | 2 | 33.3% | 5 | 62.5% | 4 | 66.7% | 4 | 66.7% | 0 | 0.0% | 0 | 0.0% |
| White | 1,325 | 31.7% | 1,265 | 30.4% | 1,231 | 30.4% | 1,118 | 29.0% | 1,071 | 28.3% | 1,005 | 27.3% |
| Summary | 1,327 | 31.7% | 1,270 | 30.5% | 1,235 | 30.4% | 1,122 | 29.0% | 1,071 | 28.3% | 1,005 | 27.3% |
| TOTAL | | | | | | | | | | | | |
| TOTAL | 4,379 | 42.4% | 4,235 | 41.5% | 4,199 | 41.5% | 4,031 | 40.9% | 3,925 | 40.6% | 3,711 | 39.8% |

Students Not Living With Both Parents by Percent of Ethnic Group
All Elementary School Students/Grades K-5
1990-1991 to 2007-2008



Students Not Living With Both Parents by Ethnic Group
All Elementary School Students/Grades K-5
1990-1991 to 2007-2008



District Summary
Number and Percent of Students in each Ethnic Group Not Living With Both Parents
All Elementary School Students/Grades K-5

| ETHNIC GROUP | 2002/2003 | | 2003/2004 | | 2004/2005 | | 2005/2006 | | 2006/2007 | | 2007/2008 | |
|-------------------------|--------------|--------------|--------------|--------------|--------------|--------------|--------------|--------------|--------------|--------------|--------------|--------------|
| | No. | % | No. | % | No. | % | No. | % | No. | % | No. | % |
| American Indians | | | | | | | | | | | | |
| American Indian | 184 | 50.4% | 165 | 51.9% | 164 | 52.7% | 144 | 50.2% | 138 | 55.0% | 135 | 54.4% |
| Alaska Native | 36 | 60.0% | 28 | 57.1% | 28 | 57.1% | 40 | 62.5% | 44 | 64.7% | 39 | 59.1% |
| Native American | 65 | 60.7% | 59 | 60.2% | 68 | 60.7% | 60 | 60.6% | 59 | 57.8% | 51 | 58.0% |
| Summary | 285 | 53.6% | 252 | 54.2% | 260 | 55.1% | 244 | 54.2% | 241 | 57.2% | 225 | 56.0% |
| African American | 3,306 | 65.6% | 3,132 | 64.2% | 3,014 | 63.7% | 2,965 | 62.5% | 2,874 | 63.0% | 2,713 | 60.4% |
| Chicano/Latino | | | | | | | | | | | | |
| Latino Asian | 49 | 27.7% | 49 | 29.3% | 56 | 37.3% | 62 | 41.6% | 57 | 46.0% | 53 | 40.8% |
| Latino Black | 122 | 63.2% | 121 | 63.7% | 132 | 65.7% | 131 | 66.5% | 116 | 71.2% | 121 | 71.2% |
| Latino Indian | 478 | 36.8% | 451 | 36.2% | 429 | 36.1% | 451 | 36.0% | 441 | 35.9% | 484 | 35.0% |
| Latino White | 356 | 34.9% | 361 | 33.6% | 340 | 31.8% | 313 | 30.5% | 306 | 31.0% | 308 | 31.8% |
| Summary | 1,005 | 37.4% | 982 | 36.7% | 957 | 36.7% | 957 | 36.5% | 920 | 36.8% | 966 | 36.4% |
| Asian | | | | | | | | | | | | |
| Chinese | 181 | 15.6% | 170 | 14.4% | 160 | 13.5% | 180 | 14.6% | 168 | 13.8% | 149 | 12.4% |
| East Indian | 19 | 15.6% | 23 | 18.0% | 25 | 17.6% | 25 | 16.8% | 25 | 15.3% | 23 | 14.5% |
| Filipino | 262 | 27.7% | 253 | 28.1% | 255 | 29.3% | 253 | 29.8% | 230 | 28.7% | 223 | 27.5% |
| Japanese | 71 | 17.7% | 56 | 14.4% | 71 | 17.7% | 65 | 17.3% | 59 | 16.2% | 48 | 13.3% |
| Korean | 37 | 22.0% | 27 | 16.0% | 25 | 17.0% | 22 | 13.5% | 22 | 12.7% | 22 | 12.6% |
| Other Asian | 91 | 35.1% | 103 | 36.9% | 102 | 34.0% | 95 | 32.2% | 84 | 30.7% | 83 | 28.9% |
| Samoan | 77 | 41.2% | 73 | 38.6% | 69 | 43.1% | 52 | 41.9% | 63 | 48.5% | 55 | 46.2% |
| Other Southeast | 319 | 46.0% | 278 | 43.1% | 247 | 41.6% | 228 | 42.0% | 200 | 41.0% | 178 | 39.2% |
| Vietnamese | 456 | 38.5% | 414 | 35.2% | 402 | 35.5% | 363 | 33.2% | 344 | 32.4% | 338 | 31.2% |
| Summary | 1,513 | 29.5% | 1,397 | 27.6% | 1,356 | 27.5% | 1,283 | 26.6% | 1,195 | 25.6% | 1,119 | 24.1% |
| White | | | | | | | | | | | | |
| Gypsy | 5 | 62.5% | 5 | 71.4% | 3 | 50.0% | 4 | 50.0% | 4 | 57.1% | 3 | 50.0% |
| White | 2,143 | 24.1% | 2,036 | 22.5% | 1,991 | 21.8% | 1,935 | 20.8% | 1,922 | 19.8% | 1,842 | 18.6% |
| Summary | 2,148 | 24.2% | 2,041 | 22.6% | 1,994 | 21.8% | 1,939 | 20.8% | 1,926 | 19.8% | 1,845 | 18.6% |
| TOTAL | 8,257 | 37.1% | 7,804 | 35.3% | 7,581 | 34.7% | 7,388 | 33.6% | 7,156 | 32.7% | 6,868 | 31.1% |

STUDENTS ELIGIBLE FOR FREE AND REDUCED-PRICE LUNCH

Definition

Students are eligible for free or reduced-price lunches based on family income criteria established by the Federal government. The specific income requirements depend upon the size of the family and are adjusted each year. For example, in 2006 a student in a family of four was eligible for free lunches if the family had an annual income below \$26,000. This cutoff for eligibility for free lunches was raised in 2007 to \$26,845. In 2007 the income limit for reduced-price lunches for a family of four was \$38,203, versus \$37,000 in 2006.

There are two ways in which eligibility for free or reduced-price lunches are determined. In one method, parents complete applications for free or reduced-price lunches. Child Nutrition Services (CNS) reviews these applications, determines eligibility, and regularly updates a central computer file to indicate students eligible for free or reduced-price lunches. The second method instituted in 1993 directly certifies families as eligible for free or reduced-price lunch based on family income information collected by the Washington State Department of Social and Human Services. After matching student names and birth dates, eligibility is determined, returned to Seattle Public Schools and entered in the Child Nutrition Services database.

The free and reduced-price lunch data are used in a variety of ways:

1. To indicate to lunch room managers that the child should receive free or reduced price lunches (and in some cases breakfasts);
2. To provide summary statistics that indicate the relative income of school populations, groups of students, or areas of the city; and
3. To determine whether a school, based on summary statistics for the school, is eligible for

Elementary and Secondary Education Act (ESEA) Title 1 funds.

Results

The following tables show that a disproportionately higher percent of minority students are from low-income families. The overall number of students eligible for free or reduced-price lunch rose by 63 students to 39.0% in 2007-2008 from 2006-2007, and, while small, is the first yearly increase in both number and percentage of students eligible for free or reduced-price lunch since 1996-1997. As a percentage of enrollment, White students eligible to participate in free or reduced-price lunch decreased 0.6 percentage points, but increased for African American, Latino and Asian ethnic groups by 2.6, 2.4, and 1.2 percentage points, respectively, from 2006-2007 to 2007-2008.

At the high school level, the overall percentage of students eligible for free or reduced-price lunches rose from 33.3% to 34.8% (28 students) in 2007-2008 from 2006-2007. Compared to 2006-2007, the percent of American Indian and White high school students eligible for free or reduced-price lunches fell by 2.2 and 1.1 percentage points while rising for the African American, Latino and Asian ethnic groups by 3.8, 5.6, and 2.1 percentage points, respectively, in 2007-2008.

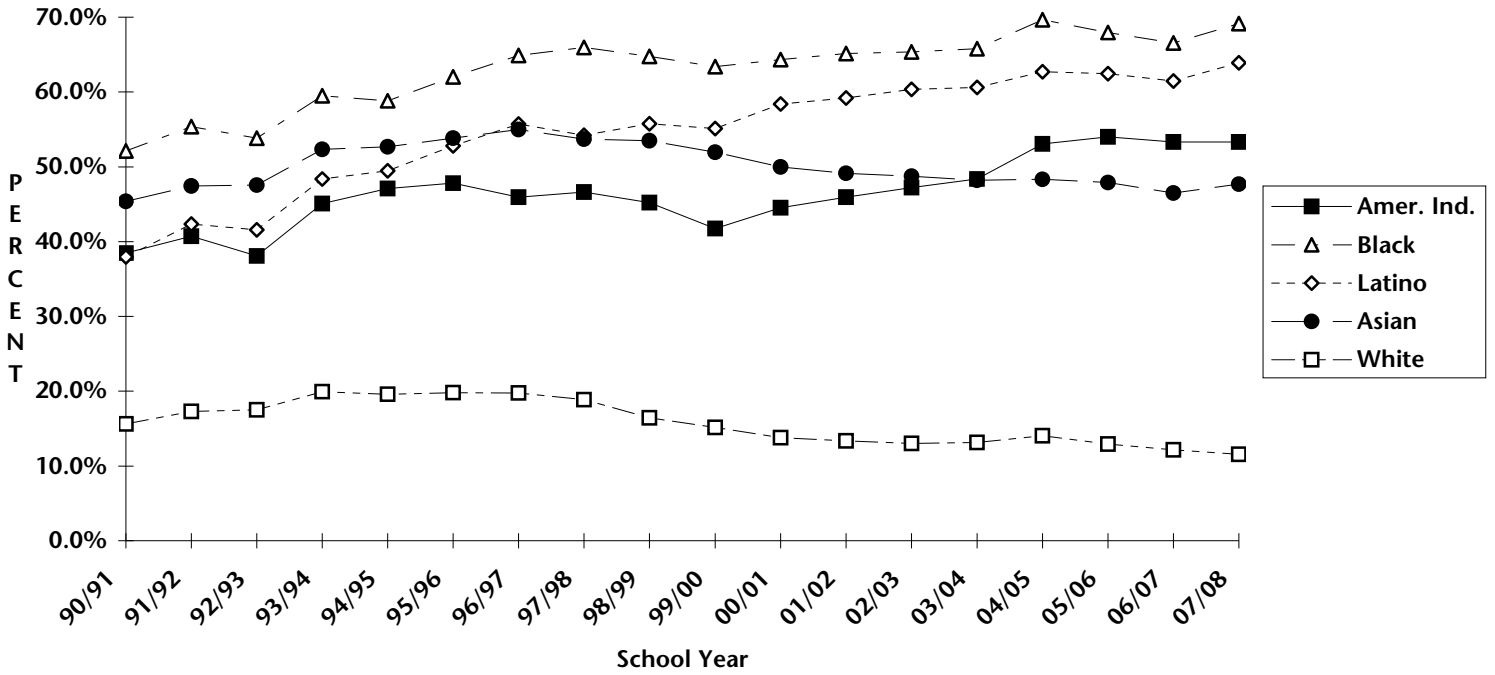
The number of middle school students eligible for free or reduced-price lunch in 2007-2008 decreased by 126 students from 2006-2007, but rose as a percentage of total enrollment to 42.4%. The Latino ethnic group showed the first year to year decrease in both the number and percent of middle school students eligible for free or reduced-price lunches since 1998-1999. The American Indian, Asian and White ethnic groups also declined in both number and percent of middle school students eligible for free or reduced-price lunch from 2006-2007 to 2007-2008, but the African American ethnic

group exhibited a 4.1 percentage point increase from the previous year as a percent of total enrollment.

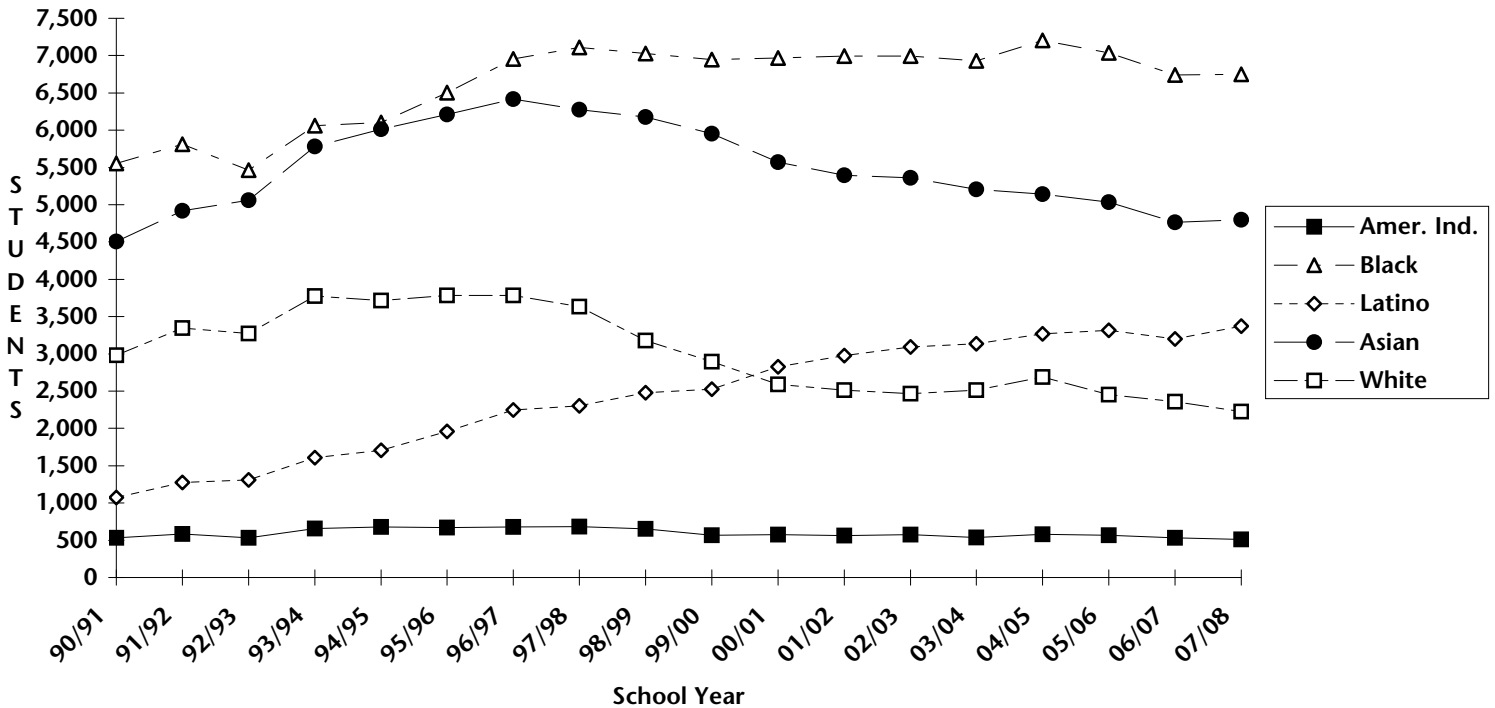
At the elementary school level, the overall number of students receiving free or reduced-price lunches increased in 2007-2008 for the first time in ten years, rising by 161 students from 2006-2007. Most of the decline before 2003-2004 occurred in the White ethnic group, but since then the decline has been mostly affected by fewer Asian students receiving free or reduced-price lunches. The steady declines in both the number and percentage of Asian elementary students eligible for free or reduced-price lunches since 1996-1997 reversed in 2007-2008 with an increase of 65 students, or 1.6 percentage points, from 2006-2007.



**Students Receiving Free or Reduced Price Lunch
by Percent of Ethnic Group
District Summary - All Regular and Alternative Schools
1990-1991 to 2007-2008**



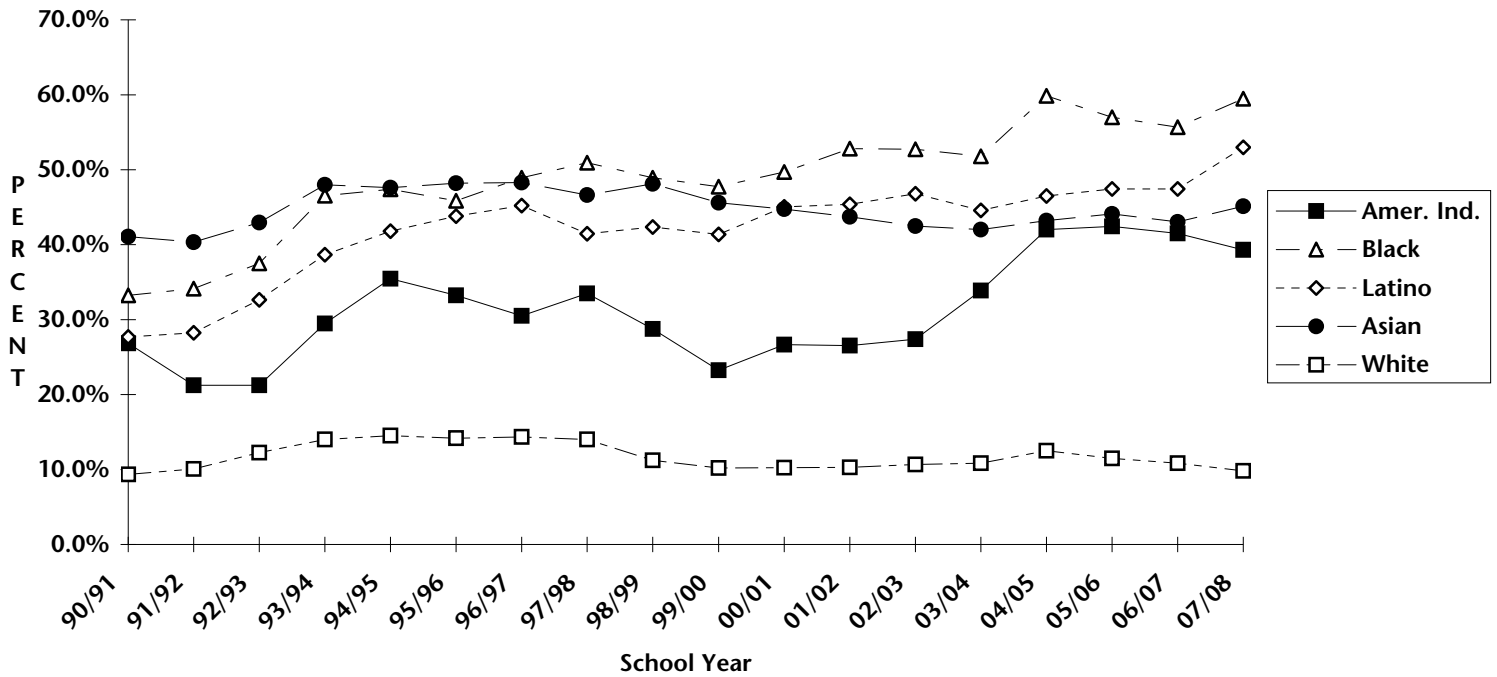
**Students Receiving Free or Reduced Price Lunch by Ethnic Group
District Summary - All Regular and Alternative Schools
1990-1991 to 2007-2008**



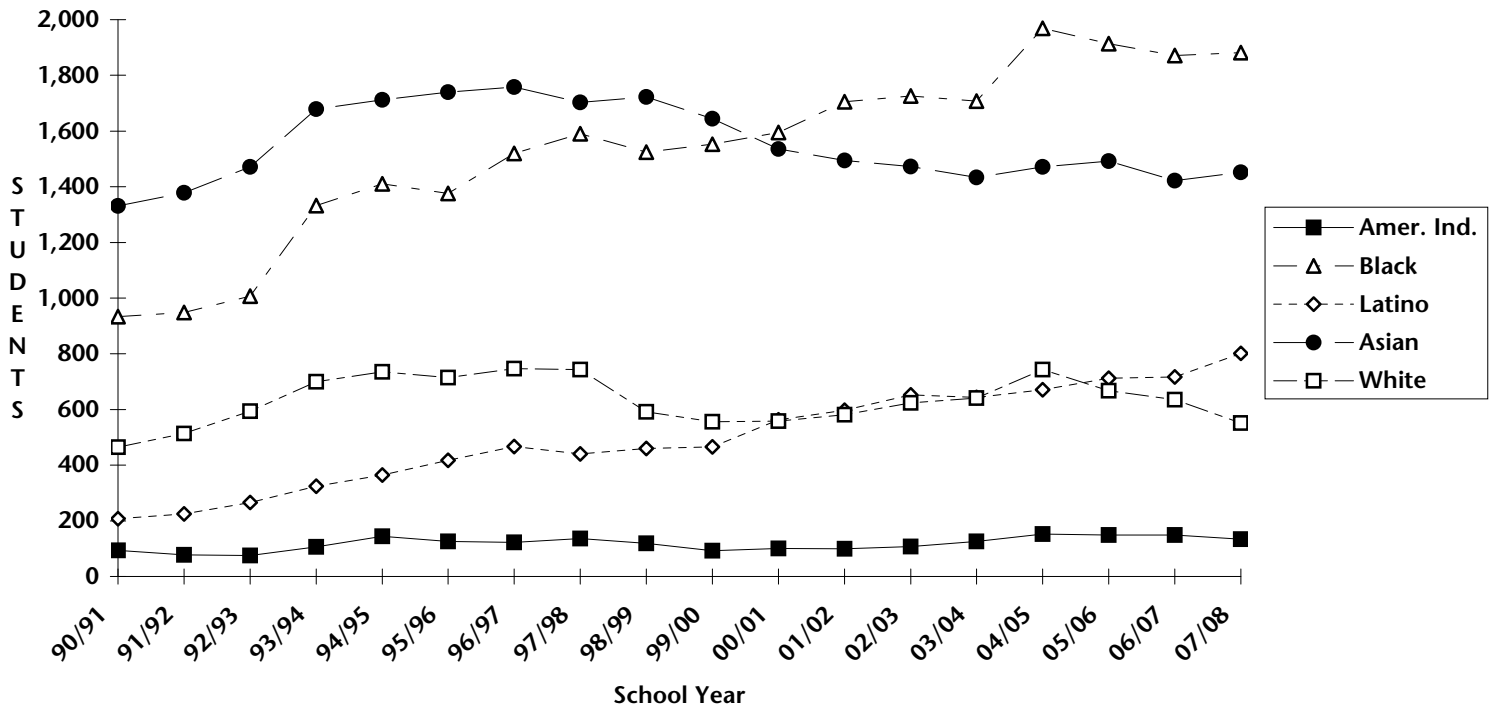
District Summary
Number and Percent of Students in each Ethnic Group Receiving Free or Reduced Price Lunch
All Regular and Alternative Schools

| ETHNIC GROUP | 2002/2003 | | 2003/2004 | | 2004/2005 | | 2005/2006 | | 2006/2007 | | 2007/2008 | |
|-------------------------|-----------|-------|-----------|-------|-----------|-------|-----------|-------|-----------|-------|-----------|-------|
| | No. | % | No. | % | No. | % | No. | % | No. | % | No. | % |
| American Indians | | | | | | | | | | | | |
| American Indian | 380 | 45.1% | 353 | 45.9% | 374 | 50.7% | 343 | 49.9% | 319 | 48.9% | 319 | 50.6% |
| Alaska Native | 63 | 42.9% | 59 | 48.4% | 58 | 48.3% | 66 | 51.2% | 64 | 50.8% | 61 | 47.7% |
| Native American | 131 | 58.0% | 127 | 56.7% | 150 | 62.5% | 157 | 68.0% | 151 | 67.7% | 130 | 65.7% |
| Summary | 574 | 47.2% | 539 | 48.3% | 582 | 53.1% | 566 | 54.0% | 534 | 53.3% | 510 | 53.3% |
| African American | | | | | | | | | | | | |
| African American | 6,995 | 65.3% | 6,927 | 65.8% | 7,202 | 69.7% | 7,036 | 68.0% | 6,738 | 66.6% | 6,750 | 69.2% |
| Chicano/Latino | | | | | | | | | | | | |
| Latino Asian | 128 | 39.4% | 120 | 37.9% | 125 | 41.5% | 123 | 42.3% | 108 | 38.8% | 123 | 42.6% |
| Latino Black | 217 | 58.5% | 224 | 58.6% | 257 | 65.7% | 267 | 66.8% | 246 | 68.7% | 237 | 66.9% |
| Latino Indian | 1,774 | 68.6% | 1,721 | 67.9% | 1,703 | 68.3% | 1,787 | 68.8% | 1,738 | 66.7% | 1,883 | 69.9% |
| Latino White | 973 | 52.9% | 1,072 | 55.1% | 1,185 | 58.3% | 1,140 | 56.4% | 1,109 | 56.4% | 1,130 | 58.1% |
| Summary | 3,092 | 60.3% | 3,137 | 60.6% | 3,270 | 62.7% | 3,317 | 62.4% | 3,201 | 61.5% | 3,373 | 63.9% |
| Asian | | | | | | | | | | | | |
| Chinese | 1,037 | 43.1% | 1,054 | 42.8% | 1,045 | 42.1% | 1,105 | 43.2% | 1,131 | 44.3% | 1,143 | 44.9% |
| East Indian | 86 | 30.3% | 93 | 33.1% | 95 | 33.1% | 95 | 31.3% | 100 | 32.7% | 101 | 33.1% |
| Filipino | 765 | 35.9% | 756 | 36.6% | 764 | 37.9% | 729 | 37.2% | 632 | 34.2% | 710 | 38.9% |
| Japanese | 69 | 8.6% | 72 | 9.3% | 87 | 11.1% | 70 | 9.2% | 72 | 9.5% | 77 | 10.2% |
| Korean | 63 | 16.8% | 57 | 16.3% | 47 | 15.1% | 52 | 16.0% | 49 | 14.9% | 44 | 13.3% |
| Other Asian | 220 | 45.4% | 251 | 50.5% | 259 | 48.1% | 254 | 47.0% | 226 | 43.3% | 233 | 43.2% |
| Samoan | 340 | 75.9% | 325 | 74.2% | 281 | 72.1% | 258 | 73.5% | 229 | 69.0% | 228 | 76.5% |
| Other Southeast | 1,121 | 64.9% | 1,013 | 62.8% | 952 | 62.8% | 854 | 62.3% | 752 | 59.1% | 688 | 59.9% |
| Vietnamese | 1,660 | 70.7% | 1,586 | 68.4% | 1,610 | 69.5% | 1,618 | 69.0% | 1,572 | 67.4% | 1,573 | 68.0% |
| Summary | 5,361 | 48.7% | 5,207 | 48.2% | 5,140 | 48.3% | 5,035 | 47.9% | 4,763 | 46.5% | 4,797 | 47.7% |
| White | | | | | | | | | | | | |
| Gypsy | 9 | 34.6% | 10 | 38.5% | 8 | 34.8% | 11 | 44.0% | 8 | 38.1% | 3 | 20.0% |
| White | 2,455 | 13.0% | 2,503 | 13.1% | 2,680 | 14.0% | 2,442 | 12.9% | 2,350 | 12.2% | 2,224 | 11.6% |
| Summary | 2,464 | 13.0% | 2,513 | 13.2% | 2,688 | 14.1% | 2,453 | 12.9% | 2,358 | 12.2% | 2,227 | 11.6% |
| TOTAL | | | | | | | | | | | | |
| TOTAL | 18,486 | 39.4% | 18,323 | 39.2% | 18,882 | 40.7% | 18,407 | 39.8% | 17,594 | 38.3% | 17,657 | 39.0% |

**Students Receiving Free or Reduced Price Lunch
by Percent of Ethnic Group
All High School Students/Grades 9-12
1990-1991 to 2007-2008**



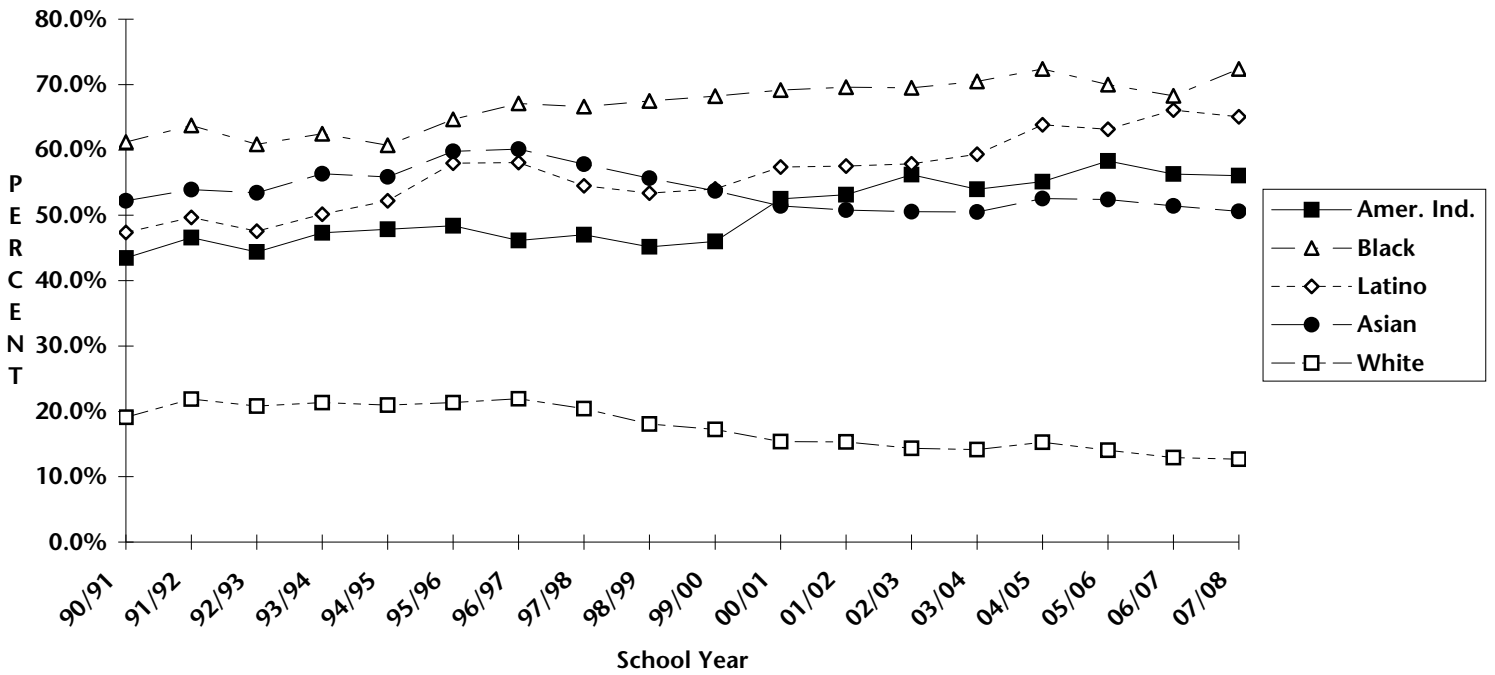
**Students Receiving Free or Reduced Price Lunch by Ethnic Group
All High School Students/Grades 9-12
1990-1991 to 2007-2008**



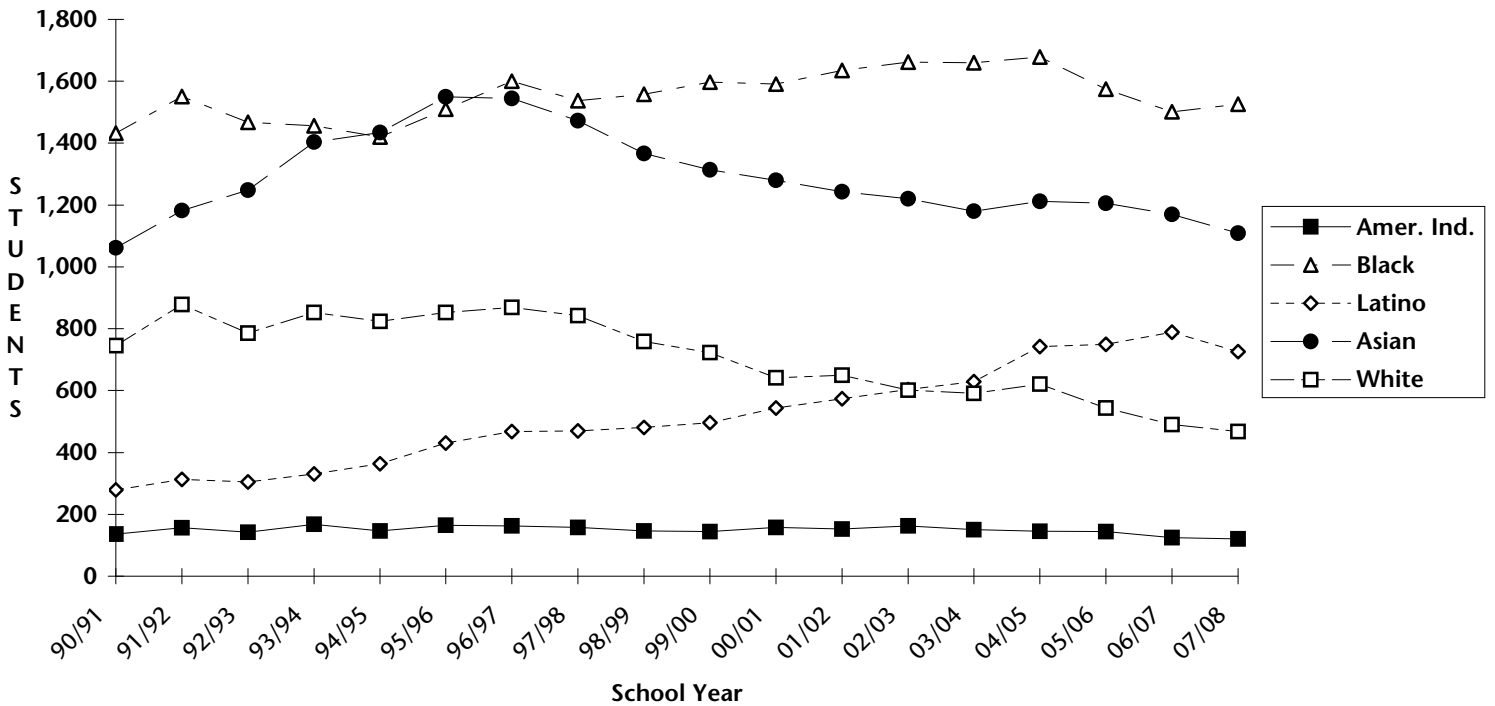
District Summary
Number and Percent of Students in each Ethnic Group Receiving Free or Reduced Price Lunch
All High School Students/Grades 9-12

| ETHNIC GROUP | 2002/2003 | | 2003/2004 | | 2004/2005 | | 2005/2006 | | 2006/2007 | | 2007/2008 | |
|-------------------------|-----------|-------|-----------|-------|-----------|-------|-----------|-------|-----------|-------|-----------|-------|
| | No. | % | No. | % | No. | % | No. | % | No. | % | No. | % |
| American Indians | | | | | | | | | | | | |
| American Indian | 74 | 26.6% | 92 | 34.8% | 112 | 43.4% | 93 | 38.1% | 95 | 37.7% | 87 | 37.2% |
| Alaska Native | 15 | 28.3% | 14 | 32.6% | 11 | 26.2% | 9 | 25.0% | 10 | 27.8% | 13 | 33.3% |
| Native American | 19 | 30.2% | 20 | 30.8% | 29 | 46.8% | 47 | 66.2% | 44 | 62.0% | 34 | 50.0% |
| Summary | 108 | 27.4% | 126 | 33.9% | 152 | 42.0% | 149 | 42.5% | 149 | 41.5% | 134 | 39.3% |
| African American | | | | | | | | | | | | |
| African American | 1,726 | 52.7% | 1,707 | 51.8% | 1,969 | 59.9% | 1,914 | 57.0% | 1,871 | 55.7% | 1,882 | 59.5% |
| Chicano/Latino | | | | | | | | | | | | |
| Latino Asian | 22 | 24.4% | 18 | 21.7% | 24 | 27.0% | 26 | 31.0% | 19 | 23.8% | 30 | 33.0% |
| Latino Black | 53 | 47.7% | 47 | 46.1% | 52 | 54.2% | 59 | 55.7% | 56 | 55.4% | 62 | 59.6% |
| Latino Indian | 406 | 56.2% | 397 | 52.7% | 372 | 51.8% | 409 | 54.5% | 422 | 53.4% | 456 | 58.4% |
| Latino White | 171 | 36.5% | 181 | 36.0% | 223 | 41.3% | 218 | 38.9% | 220 | 40.7% | 254 | 47.3% |
| Summary | 652 | 46.8% | 643 | 44.6% | 671 | 46.5% | 712 | 47.4% | 717 | 47.4% | 802 | 53.0% |
| Asian | | | | | | | | | | | | |
| Chinese | 325 | 45.8% | 326 | 43.1% | 339 | 43.2% | 352 | 43.7% | 354 | 44.1% | 366 | 44.9% |
| East Indian | 27 | 27.3% | 29 | 30.5% | 26 | 26.3% | 34 | 32.4% | 35 | 36.8% | 32 | 37.6% |
| Filipino | 171 | 24.5% | 186 | 27.0% | 208 | 29.5% | 198 | 29.0% | 164 | 24.9% | 196 | 32.0% |
| Japanese | 10 | 4.3% | 12 | 5.3% | 17 | 7.9% | 17 | 7.9% | 24 | 10.7% | 26 | 11.4% |
| Korean | 17 | 13.0% | 15 | 12.8% | 14 | 13.7% | 15 | 16.0% | 15 | 17.4% | 11 | 11.7% |
| Other Asian | 48 | 36.6% | 55 | 45.5% | 66 | 45.8% | 59 | 42.8% | 51 | 35.2% | 51 | 35.7% |
| Samoan | 104 | 65.0% | 100 | 62.1% | 91 | 61.1% | 99 | 63.5% | 78 | 61.9% | 77 | 71.3% |
| Other Southeast | 334 | 54.5% | 316 | 52.8% | 320 | 55.6% | 300 | 56.1% | 275 | 55.2% | 238 | 54.7% |
| Vietnamese | 436 | 63.1% | 395 | 61.1% | 390 | 61.9% | 418 | 63.9% | 426 | 63.7% | 455 | 65.2% |
| Summary | 1,472 | 42.5% | 1,434 | 42.0% | 1,471 | 43.2% | 1,492 | 44.1% | 1,422 | 43.0% | 1,452 | 45.1% |
| White | | | | | | | | | | | | |
| Gypsy | 3 | 25.0% | 2 | 18.2% | 3 | 27.3% | 4 | 36.4% | 5 | 35.7% | 1 | 12.5% |
| White | 621 | 10.7% | 639 | 10.9% | 740 | 12.5% | 663 | 11.5% | 630 | 10.8% | 551 | 9.8% |
| Summary | 624 | 10.7% | 641 | 10.9% | 743 | 12.5% | 667 | 11.5% | 635 | 10.9% | 552 | 9.8% |
| TOTAL | | | | | | | | | | | | |
| TOTAL | 4,582 | 31.9% | 4,551 | 31.6% | 5,006 | 34.7% | 4,934 | 34.3% | 4,794 | 33.3% | 4,822 | 34.8% |

**Students Receiving Free or Reduced Price Lunch
by Percent of Ethnic Group
All Middle School Students/Grades 6-8
1990-1991 to 2007-2008**



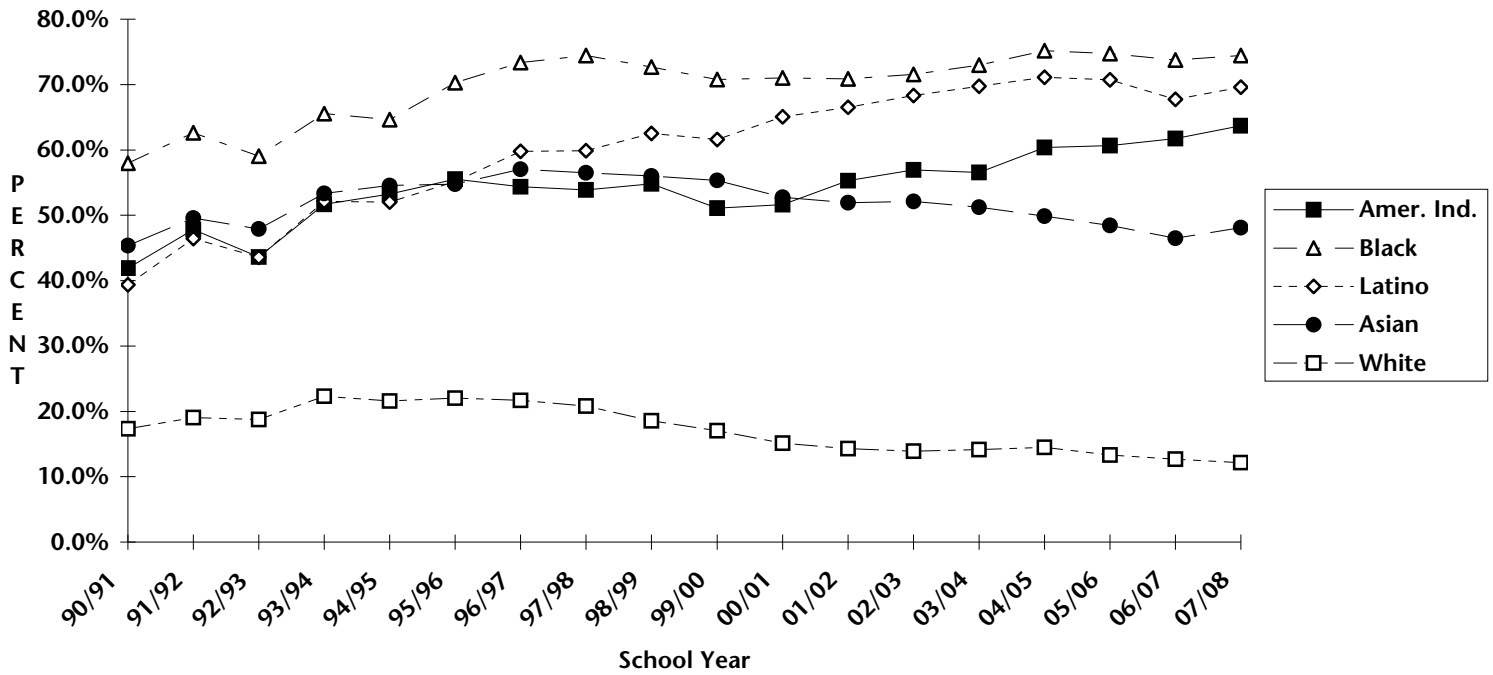
**Students Receiving Free or Reduced Price Lunch by Ethnic Group
All Middle School Students/Grades 6-8
1990-1991 to 2007-2008**



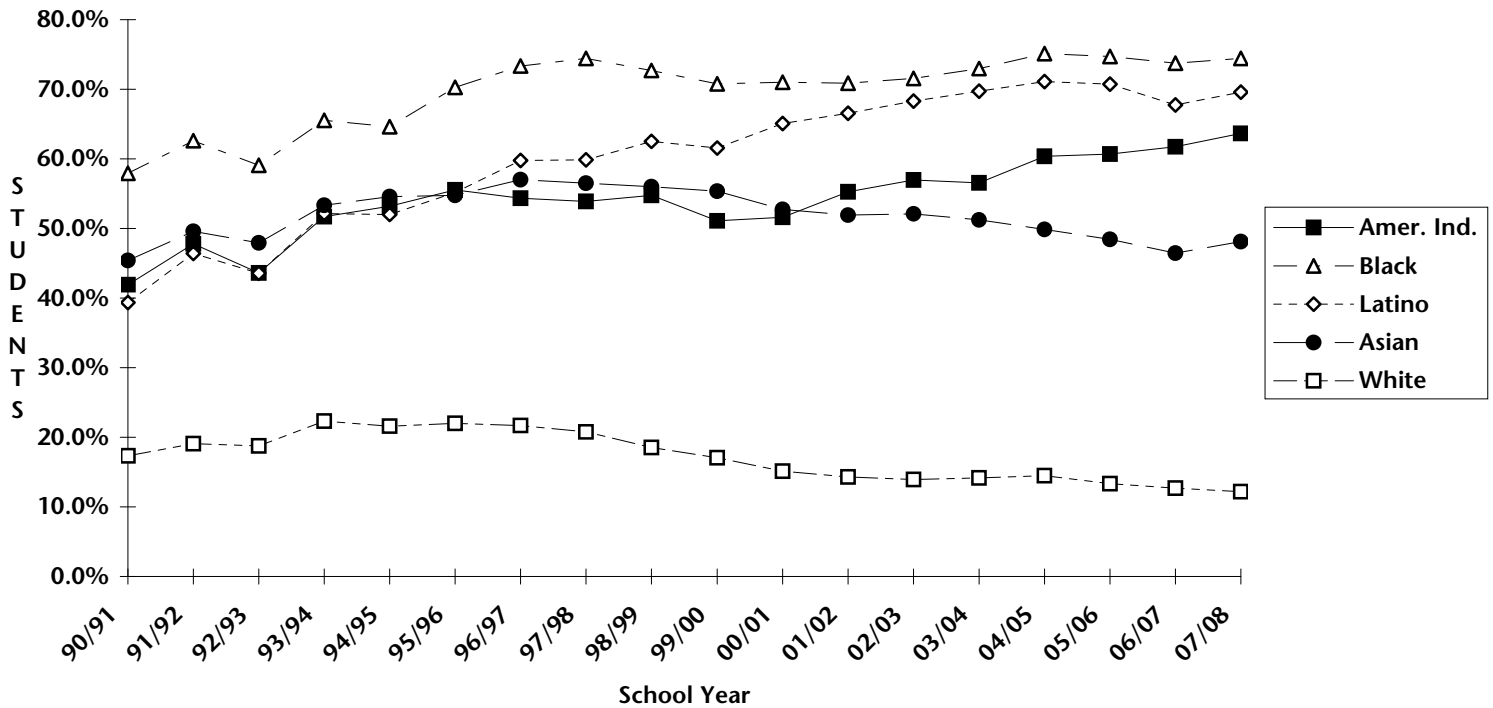
District Summary
Number and Percent of Students in each Ethnic Group Receiving Free or Reduced Price Lunch
All Middle School Students/Grades 6-8

| ETHNIC GROUP | 2002/2003 | | 2003/2004 | | 2004/2005 | | 2005/2006 | | 2006/2007 | | 2007/2008 | |
|-------------------------|-----------|-------|-----------|-------|-----------|-------|-----------|-------|-----------|-------|-----------|-------|
| | No. | % | No. | % | No. | % | No. | % | No. | % | No. | % |
| American Indians | | | | | | | | | | | | |
| American Indian | 105 | 52.5% | 89 | 47.6% | 83 | 49.4% | 87 | 55.4% | 78 | 52.0% | 79 | 53.0% |
| Alaska Native | 17 | 50.0% | 19 | 63.3% | 17 | 58.6% | 17 | 58.6% | 13 | 59.1% | 12 | 52.2% |
| Native American | 41 | 73.2% | 42 | 68.9% | 45 | 68.2% | 40 | 65.6% | 34 | 68.0% | 29 | 69.0% |
| Summary | 163 | 56.2% | 150 | 54.0% | 145 | 55.1% | 144 | 58.3% | 125 | 56.3% | 120 | 56.1% |
| African American | | | | | | | | | | | | |
| African American | 1,662 | 69.5% | 1,660 | 70.5% | 1,678 | 72.4% | 1,574 | 70.0% | 1,501 | 68.3% | 1,526 | 72.4% |
| Chicano/Latino | | | | | | | | | | | | |
| Latino Asian | 26 | 44.8% | 29 | 43.3% | 26 | 41.9% | 20 | 34.5% | 28 | 37.8% | 29 | 42.6% |
| Latino Black | 44 | 65.7% | 51 | 56.7% | 61 | 64.9% | 62 | 63.9% | 74 | 78.7% | 48 | 60.0% |
| Latino Indian | 374 | 66.3% | 369 | 69.0% | 409 | 69.9% | 417 | 70.0% | 414 | 70.4% | 383 | 72.1% |
| Latino White | 159 | 45.0% | 180 | 48.9% | 246 | 58.4% | 251 | 57.4% | 273 | 62.3% | 266 | 60.9% |
| Summary | 603 | 57.9% | 629 | 59.3% | 742 | 63.9% | 750 | 63.1% | 789 | 66.1% | 726 | 65.1% |
| Asian | | | | | | | | | | | | |
| Chinese | 235 | 44.0% | 227 | 43.3% | 226 | 43.7% | 240 | 46.3% | 257 | 47.9% | 259 | 48.6% |
| East Indian | 20 | 31.7% | 19 | 32.8% | 19 | 41.3% | 17 | 34.0% | 13 | 27.1% | 22 | 36.1% |
| Filipino | 178 | 36.4% | 191 | 39.9% | 178 | 40.5% | 174 | 40.7% | 161 | 41.5% | 157 | 39.2% |
| Japanese | 20 | 12.1% | 20 | 12.5% | 23 | 13.9% | 21 | 12.1% | 21 | 12.7% | 21 | 12.9% |
| Korean | 11 | 14.7% | 11 | 17.5% | 7 | 11.3% | 12 | 17.6% | 9 | 13.0% | 9 | 14.3% |
| Other Asian | 52 | 54.7% | 44 | 45.4% | 45 | 47.9% | 52 | 48.6% | 43 | 41.7% | 46 | 42.2% |
| Samoan | 83 | 82.2% | 66 | 75.0% | 60 | 74.1% | 52 | 73.2% | 52 | 68.4% | 52 | 73.2% |
| Other Southeast | 293 | 69.8% | 259 | 69.8% | 242 | 69.9% | 193 | 66.1% | 179 | 62.6% | 163 | 62.7% |
| Vietnamese | 328 | 69.5% | 343 | 69.2% | 412 | 74.2% | 445 | 74.8% | 435 | 72.1% | 380 | 71.6% |
| Summary | 1,220 | 50.5% | 1,180 | 50.5% | 1,212 | 52.5% | 1,206 | 52.4% | 1,170 | 51.5% | 1,109 | 50.6% |
| White | | | | | | | | | | | | |
| Gypsy | 2 | 33.3% | 4 | 50.0% | 1 | 16.7% | 2 | 33.3% | 0 | 0.0% | | 0.0% |
| White | 599 | 14.3% | 587 | 14.1% | 620 | 15.3% | 542 | 14.0% | 490 | 12.9% | 468 | 12.7% |
| Summary | 601 | 14.3% | 591 | 14.2% | 621 | 15.3% | 544 | 14.1% | 490 | 12.9% | 468 | 12.7% |
| TOTAL | | | | | | | | | | | | |
| TOTAL | 4,249 | 41.1% | 4,210 | 41.3% | 4,398 | 43.5% | 4,218 | 42.8% | 4,075 | 42.1% | 3,949 | 42.4% |

**Students Receiving Free or Reduced Price Lunch
by Percent of Ethnic Group
All Elementary School Students/Grades K-5
1990-1991 to 2007-2008**



**Students Receiving Free or Reduced Price Lunch by Ethnic Group
All Elementary School Students/Grades K-5
1990-1991 to 2007-2008**



District Summary
Number and Percent of Students in each Ethnic Group Receiving Free or Reduced Price Lunch
All Elementary School Students/Grades K-5

| ETHNIC GROUP | 2002/2003 | | 2003/2004 | | 2004/2005 | | 2005/2006 | | 2006/2007 | | 2007/2008 | |
|-------------------------|-----------|-------|-----------|-------|-----------|-------|-----------|-------|-----------|-------|-----------|-------|
| | No. | % | No. | % | No. | % | No. | % | No. | % | No. | % |
| American Indians | | | | | | | | | | | | |
| American Indian | 201 | 55.1% | 172 | 54.1% | 179 | 57.6% | 163 | 56.8% | 146 | 58.2% | 153 | 61.7% |
| Alaska Native | 31 | 51.7% | 26 | 53.1% | 30 | 61.2% | 40 | 62.5% | 41 | 60.3% | 36 | 54.5% |
| Native American | 71 | 66.4% | 65 | 66.3% | 76 | 67.9% | 70 | 70.7% | 73 | 71.6% | 67 | 76.1% |
| Summary | 303 | 57.0% | 263 | 56.6% | 285 | 60.4% | 273 | 60.7% | 260 | 61.8% | 256 | 63.7% |
| African American | | | | | | | | | | | | |
| African American | 3,607 | 71.6% | 3,560 | 73.0% | 3,555 | 75.1% | 3,548 | 74.7% | 3,366 | 73.8% | 3,342 | 74.4% |
| Chicano/Latino | | | | | | | | | | | | |
| Latino Asian | 80 | 45.2% | 73 | 43.7% | 75 | 50.0% | 77 | 51.7% | 61 | 49.2% | 64 | 49.2% |
| Latino Black | 120 | 62.2% | 126 | 66.3% | 144 | 71.6% | 146 | 74.1% | 116 | 71.2% | 127 | 74.7% |
| Latino Indian | 994 | 76.5% | 955 | 76.7% | 922 | 77.5% | 961 | 76.8% | 902 | 73.5% | 1,044 | 75.6% |
| Latino White | 643 | 63.1% | 711 | 66.3% | 716 | 66.9% | 671 | 65.5% | 616 | 62.3% | 610 | 62.9% |
| Summary | 1,837 | 68.3% | 1,865 | 69.7% | 1,857 | 71.1% | 1,855 | 70.7% | 1,695 | 67.7% | 1,845 | 69.6% |
| Asian | | | | | | | | | | | | |
| Chinese | 477 | 41.0% | 501 | 42.3% | 480 | 40.6% | 513 | 41.6% | 520 | 42.9% | 518 | 43.2% |
| East Indian | 39 | 32.0% | 45 | 35.2% | 50 | 35.2% | 44 | 29.5% | 52 | 31.9% | 47 | 29.6% |
| Filipino | 416 | 44.0% | 379 | 42.2% | 378 | 43.4% | 357 | 42.0% | 307 | 38.3% | 357 | 44.1% |
| Japanese | 39 | 9.7% | 40 | 10.3% | 47 | 11.7% | 32 | 8.5% | 27 | 7.4% | 30 | 8.3% |
| Korean | 35 | 20.8% | 31 | 18.3% | 26 | 17.7% | 25 | 15.3% | 25 | 14.5% | 24 | 13.7% |
| Other Asian | 120 | 46.3% | 152 | 54.5% | 148 | 49.3% | 143 | 48.5% | 132 | 48.2% | 136 | 47.4% |
| Samoan | 153 | 81.8% | 159 | 84.1% | 130 | 81.3% | 107 | 86.3% | 99 | 76.2% | 99 | 83.2% |
| Other Southeast | 494 | 71.2% | 438 | 67.9% | 390 | 65.7% | 361 | 66.5% | 298 | 61.1% | 287 | 63.2% |
| Vietnamese | 896 | 75.7% | 848 | 72.0% | 808 | 71.3% | 755 | 68.9% | 711 | 66.9% | 738 | 68.1% |
| Summary | 2,669 | 52.1% | 2,593 | 51.3% | 2,457 | 49.8% | 2,337 | 48.4% | 2,171 | 46.5% | 2,236 | 48.1% |
| White | | | | | | | | | | | | |
| Gypsy | 4 | 50.0% | 4 | 57.1% | 4 | 66.7% | 5 | 62.5% | 3 | 42.9% | 2 | 33.3% |
| White | 1,235 | 13.9% | 1,277 | 14.1% | 1,320 | 14.5% | 1,237 | 13.3% | 1,230 | 12.7% | 1,205 | 12.2% |
| Summary | 1,239 | 13.9% | 1,281 | 14.2% | 1,324 | 14.5% | 1,242 | 13.3% | 1,233 | 12.7% | 1,207 | 12.2% |
| TOTAL | | | | | | | | | | | | |
| TOTAL | 9,655 | 43.3% | 9,562 | 43.2% | 9,478 | 43.3% | 9,255 | 42.1% | 8,725 | 39.9% | 8,886 | 40.2% |

BILINGUAL STUDENTS

Definition

During registration for Seattle Public Schools, each student's primary and home languages are determined, and an assessment of the student's English fluency compared to their primary language is conducted. When a parent indicates that the student understands or speaks the primary language more fluently than or equally fluent to the English language, the student is given the Language Assessment Scales (LAS) test to determine English fluency. The result of this assessment determines whether the student will be eligible for bilingual services. The Transitional Bilingual Education Office maintains eligibility data indicating whether or not the students are eligible for bilingual services from the Limited English Proficiency (LEP) program. These eligibility data are updated annually with information obtained through standardized test results using the second version of the Washington Language and Proficiency Test (WLPT II). The information presented here is taken from June computer files instead of October computer files in order to maintain compatibility with previous years when eligibility codes were not updated until the middle of the school year.

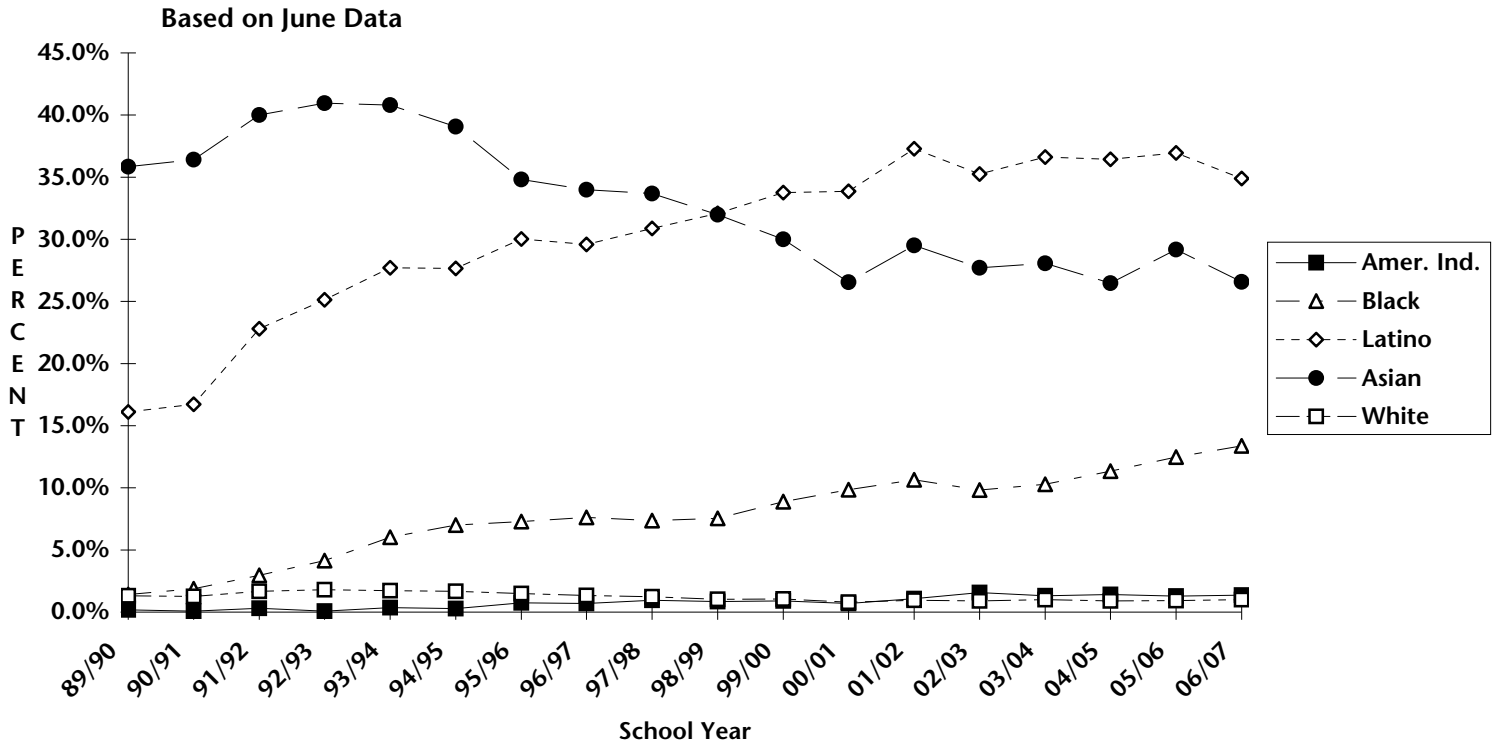
Bilingual data is presented for the entire District, showing the numbers and percentages of students who have Limited English Proficiency or Equal English Proficiency. Unlike previous years, starting this year the Limited English Proficiency students are reported separately from the Equal English Proficiency students. Numeric data are shown for the past six years while charts show the last eighteen years of data. No separate high school, middle school or elementary school tables are given.

Results

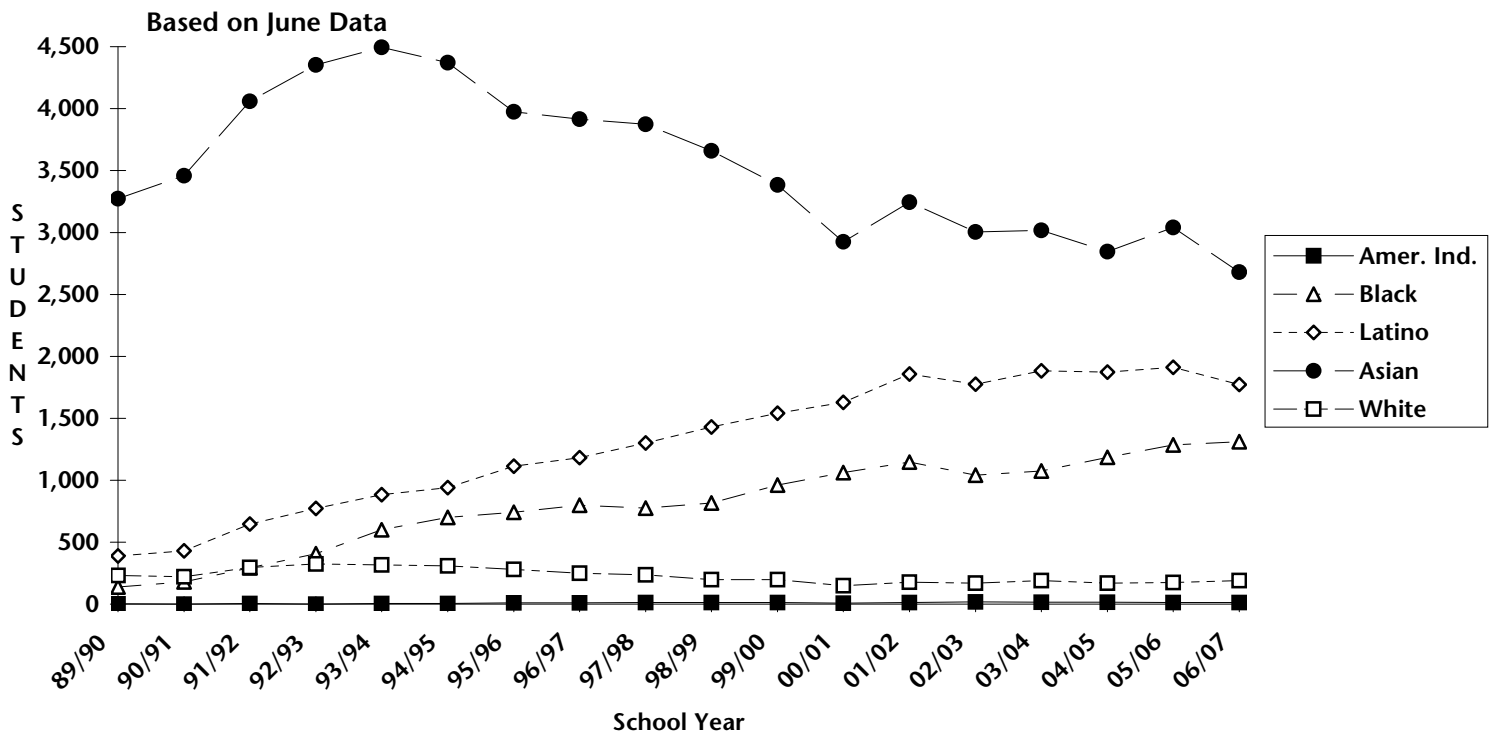
The majority of both Limited English and Equal English students are predominantly Asian, followed by Latino and other groups. In June 2007, the Seattle Public Schools had 10,466 students (23.3 percent of the total District enrollment) with limited or equal English proficiency. Of these, 5,971 (13.3 percent of the District) are Limited English Proficient students. The total number and percentage of Limited English Proficient students fell by 456 students from 2005-2006 to 2006-2007. The number and percentage of Equal English-speaking students rose by 309 students to 10.0% of the District population from 2005-2006 to 2006-2007.



**Limited English Proficiency by Percent of Ethnic Group
District Summary - All Regular and Alternative Schools
1989-1990 to 2006-2007**



**Students with Limited English Proficiency by Ethnic Group
District Summary - All Regular and Alternative Schools
1989-1990 to 2006-2007**

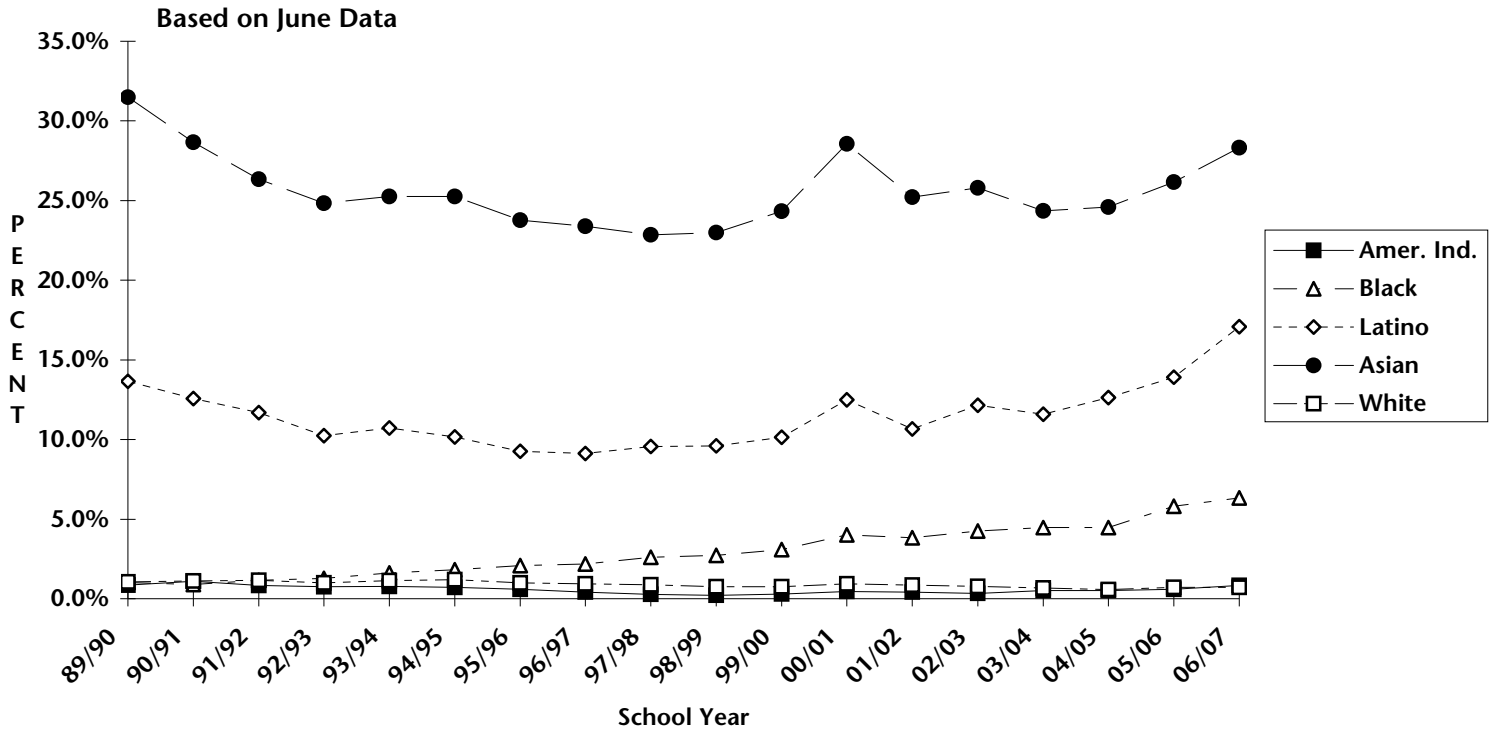


District Summary
Number and Percent of Bilingual Students in each Ethnic Group
All Regular and Alternative Schools

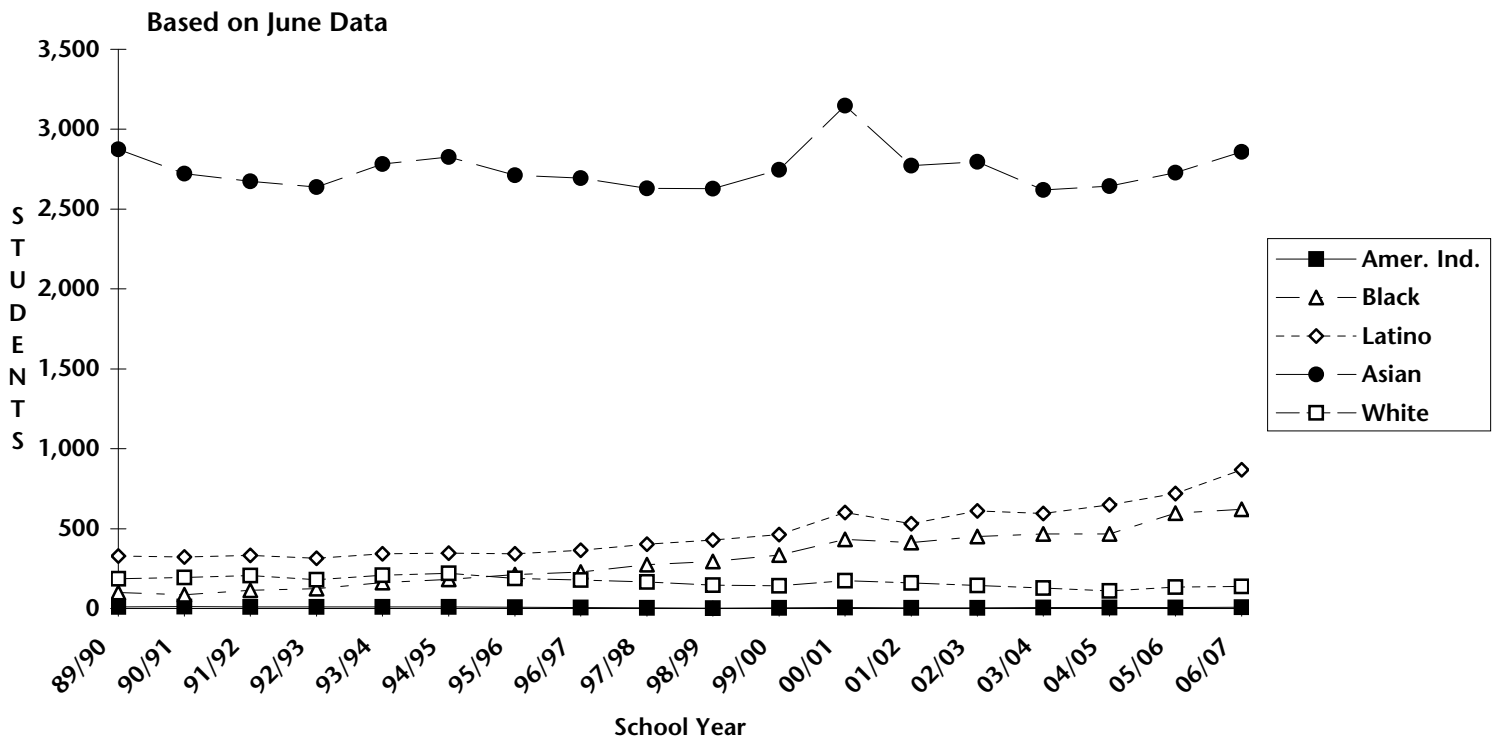
Limited English Proficiency

| ETHNIC GROUP | 2001/2002 | | 2002/2003 | | 2003/2004 | | 2004/2005 | | 2005/2006 | | 2006/2007 | |
|-------------------------|-----------|-------|-----------|-------|-----------|-------|-----------|-------|-----------|-------|-----------|-------|
| | No. | % | No. | % | No. | % | No. | % | No. | % | No. | % |
| American Indians | | | | | | | | | | | | |
| American Indian | 7 | 0.8% | 12 | 1.5% | 7 | 0.9% | 9 | 1.2% | 6 | 0.9% | 8 | 1.3% |
| Alaska Native | 0 | 0.0% | 0 | 0.0% | 0 | 0.0% | 0 | 0.0% | 0 | 0.0% | 1 | 0.8% |
| Native American | 6 | 2.9% | 6 | 2.8% | 8 | 3.3% | 7 | 2.8% | 7 | 3.1% | 4 | 1.9% |
| Summary | 13 | 1.1% | 18 | 1.6% | 15 | 1.3% | 16 | 1.4% | 13 | 1.3% | 13 | 1.4% |
| African American | 1,147 | 10.6% | 1,041 | 9.8% | 1,076 | 10.3% | 1,186 | 11.3% | 1,286 | 12.5% | 1,313 | 13.4% |
| Chicano/Latino | | | | | | | | | | | | |
| Latino Asian | 34 | 10.7% | 28 | 8.7% | 24 | 7.6% | 25 | 8.0% | 19 | 6.9% | 15 | 5.5% |
| Latino Black | 30 | 8.5% | 30 | 8.0% | 30 | 8.0% | 28 | 7.4% | 27 | 7.1% | 25 | 7.2% |
| Latino Indian | 1,186 | 46.0% | 1,067 | 42.5% | 1,075 | 43.2% | 1,078 | 43.4% | 1,132 | 44.4% | 1,095 | 42.8% |
| Latino White | 608 | 35.1% | 650 | 35.7% | 754 | 38.4% | 742 | 37.8% | 734 | 37.3% | 639 | 33.5% |
| Summary | 1,858 | 37.3% | 1,775 | 35.3% | 1,883 | 36.6% | 1,873 | 36.4% | 1,912 | 36.9% | 1,774 | 34.9% |
| Asian | | | | | | | | | | | | |
| Chinese | 683 | 28.8% | 636 | 26.4% | 680 | 27.3% | 667 | 26.8% | 793 | 30.9% | 693 | 27.0% |
| East Indian | 52 | 18.1% | 41 | 14.8% | 51 | 18.2% | 50 | 17.9% | 64 | 21.1% | 60 | 20.1% |
| Filipino | 461 | 21.8% | 448 | 21.2% | 477 | 23.0% | 462 | 22.3% | 466 | 24.0% | 422 | 23.1% |
| Japanese | 45 | 5.8% | 44 | 5.6% | 36 | 4.7% | 40 | 5.2% | 41 | 5.5% | 38 | 5.1% |
| Korean | 47 | 12.2% | 51 | 13.9% | 36 | 10.8% | 27 | 8.1% | 49 | 15.2% | 49 | 15.0% |
| Other Asian | 84 | 18.9% | 81 | 17.6% | 98 | 19.2% | 100 | 19.6% | 106 | 20.0% | 81 | 15.6% |
| Samoan | 83 | 18.6% | 83 | 18.0% | 76 | 17.9% | 61 | 14.4% | 54 | 15.3% | 56 | 18.1% |
| Other Southeast | 691 | 38.7% | 605 | 36.4% | 564 | 36.2% | 499 | 32.0% | 473 | 35.0% | 389 | 31.3% |
| Vietnamese | 1,100 | 46.1% | 1,016 | 43.9% | 1,001 | 43.4% | 940 | 40.7% | 995 | 43.0% | 893 | 39.5% |
| Summary | 3,246 | 29.5% | 3,005 | 27.7% | 3,019 | 28.1% | 2,846 | 26.5% | 3,041 | 29.2% | 2,681 | 26.6% |
| White | | | | | | | | | | | | |
| Gypsy | 2 | 8.7% | 2 | 8.0% | 2 | 8.3% | 1 | 4.2% | 1 | 4.3% | 1 | 5.6% |
| White | 176 | 0.9% | 169 | 0.9% | 188 | 1.0% | 169 | 0.9% | 174 | 0.9% | 189 | 1.0% |
| Summary | 178 | 0.9% | 171 | 0.9% | 190 | 1.0% | 170 | 0.9% | 175 | 0.9% | 190 | 1.0% |
| TOTAL | 6,442 | 13.8% | 6,010 | 13.0% | 6,183 | 13.3% | 6,091 | 13.1% | 6,427 | 14.1% | 5,971 | 13.3% |

**Equal English Proficiency by Percent of Ethnic Group
District Summary - All Regular and Alternative Schools
1989-1990 to 2006-2007**



**Students with Equal English Proficiency by Ethnic Group
District Summary - All Regular and Alternative Schools
1989-1990 to 2006-2007**



District Summary
Number and Percent of Bilingual Students in each Ethnic Group
All Regular and Alternative Schools

Equal English Proficiency

| ETHNIC GROUP | 2001/2002 | | 2002/2003 | | 2003/2004 | | 2004/2005 | | 2005/2006 | | 2006/2007 | |
|-------------------------|-----------|-------|-----------|-------|-----------|-------|-----------|-------|-----------|-------|-----------|-------|
| | No. | % | No. | % | No. | % | No. | % | No. | % | No. | % |
| American Indians | | | | | | | | | | | | |
| American Indian | 5 | 0.6% | 4 | 0.5% | 5 | 0.7% | 5 | 0.7% | 4 | 0.6% | 4 | 0.6% |
| Alaska Native | 0 | 0.0% | 0 | 0.0% | 0 | 0.0% | 0 | 0.0% | 0 | 0.0% | 1 | 0.8% |
| Native American | 0 | 0.0% | 0 | 0.0% | 1 | 0.4% | 1 | 0.4% | 2 | 0.9% | 3 | 1.5% |
| Summary | 5 | 0.4% | 4 | 0.3% | 6 | 0.5% | 6 | 0.5% | 6 | 0.6% | 8 | 0.8% |
| African American | 412 | 3.8% | 451 | 4.3% | 467 | 4.5% | 467 | 4.5% | 598 | 5.8% | 622 | 6.3% |
| Chicano/Latino | | | | | | | | | | | | |
| Latino Asian | 58 | 18.2% | 59 | 18.3% | 46 | 14.6% | 37 | 11.8% | 37 | 13.4% | 38 | 13.9% |
| Latino Black | 15 | 4.2% | 14 | 3.7% | 10 | 2.7% | 11 | 2.9% | 16 | 4.2% | 21 | 6.0% |
| Latino Indian | 332 | 12.9% | 370 | 14.7% | 359 | 14.4% | 381 | 15.3% | 421 | 16.5% | 492 | 19.2% |
| Latino White | 126 | 7.3% | 169 | 9.3% | 181 | 9.2% | 220 | 11.2% | 246 | 12.5% | 317 | 16.6% |
| Summary | 531 | 10.7% | 612 | 12.2% | 596 | 11.6% | 649 | 12.6% | 720 | 13.9% | 868 | 17.1% |
| Asian | | | | | | | | | | | | |
| Chinese | 694 | 29.2% | 760 | 31.6% | 724 | 29.0% | 729 | 29.2% | 763 | 29.7% | 845 | 33.0% |
| East Indian | 50 | 17.4% | 42 | 15.2% | 42 | 15.0% | 38 | 13.6% | 42 | 13.8% | 47 | 15.8% |
| Filipino | 395 | 18.7% | 378 | 17.9% | 350 | 16.9% | 335 | 16.1% | 355 | 18.3% | 365 | 19.9% |
| Japanese | 47 | 6.1% | 39 | 5.0% | 39 | 5.1% | 41 | 5.3% | 43 | 5.7% | 44 | 5.9% |
| Korean | 46 | 11.9% | 41 | 11.2% | 34 | 10.2% | 33 | 9.9% | 23 | 7.1% | 20 | 6.1% |
| Other Asian | 48 | 10.8% | 46 | 10.0% | 47 | 9.2% | 48 | 9.4% | 53 | 10.0% | 63 | 12.2% |
| Samoan | 53 | 11.9% | 51 | 11.1% | 45 | 10.6% | 34 | 8.0% | 42 | 11.9% | 34 | 11.0% |
| Other Southeast | 637 | 35.7% | 605 | 36.4% | 517 | 33.2% | 499 | 32.0% | 479 | 35.4% | 435 | 35.0% |
| Vietnamese | 802 | 33.6% | 835 | 36.1% | 822 | 35.6% | 888 | 38.5% | 928 | 40.1% | 1,006 | 44.5% |
| Summary | 2,772 | 25.2% | 2,797 | 25.8% | 2,620 | 24.4% | 2,645 | 24.6% | 2,728 | 26.2% | 2,859 | 28.3% |
| White | | | | | | | | | | | | |
| Gypsy | 0 | 0.0% | 0 | 0.0% | 0 | 0.0% | 0 | 0.0% | 0 | 0.0% | 0 | 0.0% |
| White | 160 | 0.9% | 145 | 0.8% | 128 | 0.7% | 110 | 0.6% | 134 | 0.7% | 138 | 0.7% |
| Summary | 160 | 0.9% | 145 | 0.8% | 128 | 0.7% | 110 | 0.6% | 134 | 0.7% | 138 | 0.7% |
| TOTAL | 3,880 | 8.3% | 4,009 | 8.6% | 3,817 | 8.2% | 3,877 | 8.3% | 4,186 | 9.2% | 4,495 | 10.0% |

SPECIAL EDUCATION STUDENTS

Definition

The Special Education office gathers and maintains Special Education data on central computer data files. When a student is referred to Special Education, a record is created indicating that this student has needs that are a focus of concern. After assessment, if the student is found to be eligible for Special Education services, the Special Education staff develops an Individual Educational Plan (IEP) for the student. This plan forms the basis for most Special Education data collection. The disability codes and data from the IEP are entered into the computer file, and the file is updated continuously as students progress through Special Education programs and are reassessed. Special Education enrollment counts, which include preschool handicapped students, are reported monthly to the State.

The data summarized here are based on June 2007 Special Education enrollment counts from preschool through 12th grade. The District enrollment figures used for percentages are taken from June files, but differ from the June enrollment used for other purposes in that preschool students are also included in the total Special Education count in the following tables and charts.

The first table, showing the number and percent of students in all Special Education categories, is presented in two parts. The first column in Part 1 shows the total number and percentage of students in each ethnic group who are in Special Education programs. The remaining columns in Part 1 and all columns in Part 2 provide a similar breakdown for each disability category.

The second set of tables and graphs shows changes over time in the total number and

percentage of Special Education students and in the main subcategory of Specific Learning Disability students. Specific Learning Disabled (SLD) children display a severe discrepancy between their actual performance and expected performance based on intelligence. These children experience difficulties in reading, writing, mathematics, or spoken and written language.

Results

Overall, 14.0 percent of the students in the District were enrolled in Special Education in June 2007. Within ethnic groups, Special Education students range from 19.6% of all American Indian students to 9.2% of all Asian students. The total number and percentage of Specific Learning Disability students fell between June 2006 and June 2007, continuing a fifth year of declining numbers in this category since June 2002. The number of students identified as Specific Learning Disabled ranges from 9.1% of all American Indian students to 3.5% of all Asian students. The other predominant categories are Health Impaired, Communication Disordered, Developmentally Delayed (Preschool), and Seriously Behaviorally Disabled. A disproportionately larger number of African American (and, as a percentage of enrollment, American Indian) students are represented in these categories.

According to the trend data across the major categories, American Indian students have exceeded African American students with the highest rate of eligibility for Special Education programs since 1995-1996. The Latino ethnic group slightly exceeds the White ethnic group on intermediate rates of eligibility. Asian students continue to show lower rates of eligibility.



District Summary
Number and Percent of Students in each Ethnic Group in Special Education (Part 1 of 2)
All Regular and Alternative Schools -- June 2007 Data

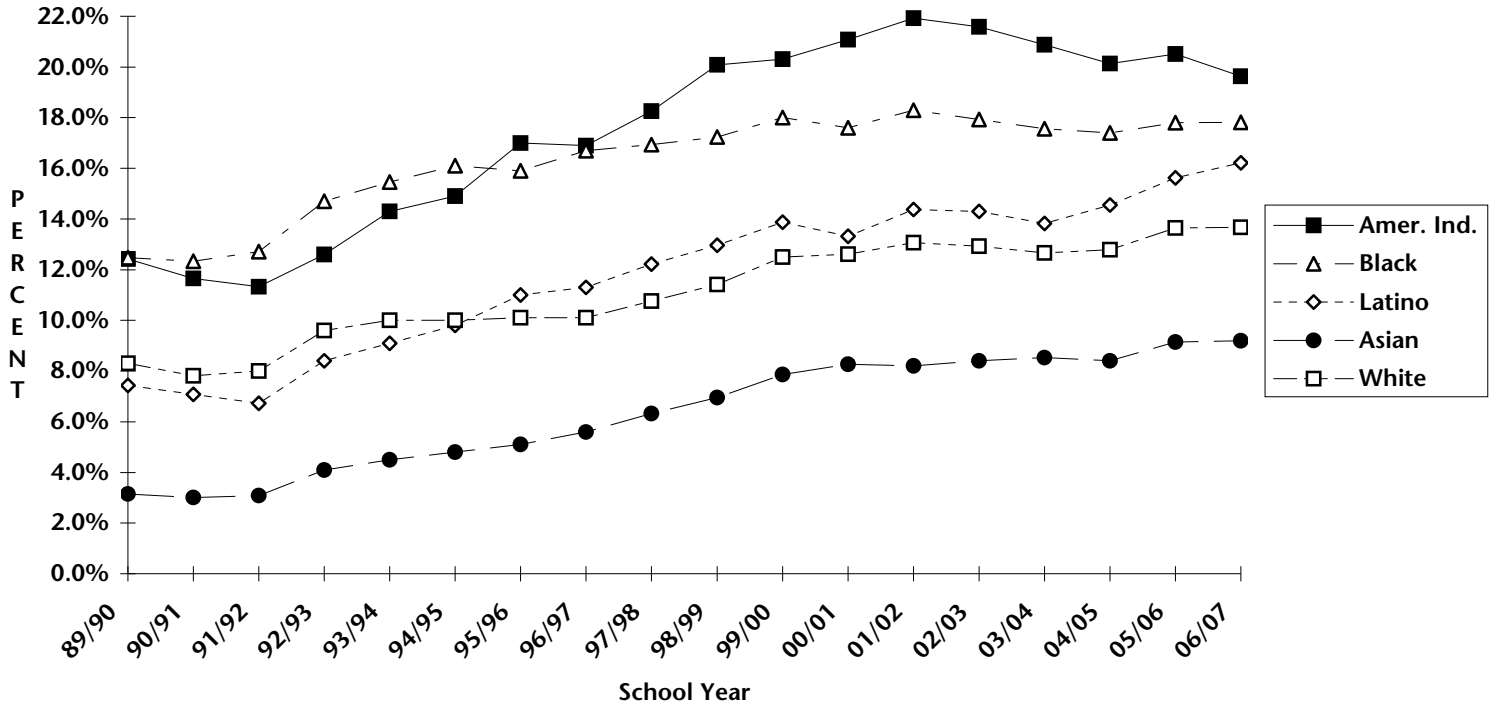
| ETHNIC GROUP | Total Special Education | | Specific Learning Disability | | Developmentally Delayed (Preschool) | | Seriously Behavior-Disabled | | Orthopedic Impaired | | Health Impaired | |
|-------------------------|-------------------------|--------------|------------------------------|-------------|-------------------------------------|-------------|-----------------------------|-------------|---------------------|-------------|-----------------|-------------|
| | No. | % | No. | % | No. | % | No. | % | No. | % | No. | % |
| American Indians | | | | | | | | | | | | |
| American Indian | 123 | 19.3% | 62 | 9.7% | 13 | 2.0% | 7 | 1.1% | 0 | 0.0% | 29 | 4.6% |
| Alaska Native | 19 | 15.3% | 5 | 4.0% | 4 | 3.2% | 2 | 1.6% | 0 | 0.0% | 4 | 3.2% |
| Native American | 48 | 23.2% | 21 | 10.1% | 5 | 2.4% | 4 | 1.9% | 0 | 0.0% | 12 | 5.8% |
| Summary | 190 | 19.6% | 88 | 9.1% | 22 | 2.3% | 13 | 1.3% | 0 | 0.0% | 45 | 4.6% |
| African American | | | | | | | | | | | | |
| African American | 1,775 | 17.8% | 788 | 7.9% | 212 | 2.1% | 142 | 1.4% | 9 | 0.1% | 346 | 3.5% |
| Chicano/Latino | | | | | | | | | | | | |
| Latino Asian | 33 | 11.7% | 10 | 3.5% | 8 | 2.8% | 2 | 0.7% | 1 | 0.4% | 5 | 1.8% |
| Latino Black | 83 | 23.6% | 45 | 12.8% | 11 | 3.1% | 2 | 0.6% | 0 | 0.0% | 13 | 3.7% |
| Latino Indian | 456 | 17.4% | 221 | 8.4% | 87 | 3.3% | 12 | 0.5% | 1 | 0.0% | 66 | 2.5% |
| Latino White | 270 | 14.0% | 120 | 6.2% | 35 | 1.8% | 9 | 0.5% | 1 | 0.1% | 63 | 3.3% |
| Summary | 842 | 16.2% | 396 | 7.6% | 141 | 2.7% | 25 | 0.5% | 3 | 0.1% | 147 | 2.8% |
| Asian | | | | | | | | | | | | |
| Chinese | 188 | 7.2% | 50 | 1.9% | 18 | 0.7% | 3 | 0.1% | 2 | 0.1% | 53 | 2.0% |
| East Indian | 37 | 12.1% | 12 | 3.9% | 5 | 1.6% | 3 | 1.0% | 1 | 0.3% | 7 | 2.3% |
| Filipino | 155 | 8.4% | 51 | 2.8% | 22 | 1.2% | 4 | 0.2% | 0 | 0.0% | 40 | 2.2% |
| Japanese | 53 | 7.0% | 18 | 2.4% | 6 | 0.8% | 1 | 0.1% | 0 | 0.0% | 22 | 2.9% |
| Korean | 27 | 8.2% | 9 | 2.7% | 3 | 0.9% | 0 | 0.0% | 0 | 0.0% | 7 | 2.1% |
| Other Asian | 78 | 14.7% | 31 | 5.8% | 15 | 2.8% | 1 | 0.2% | 1 | 0.2% | 16 | 3.0% |
| Samoan | 39 | 12.5% | 25 | 8.0% | 4 | 1.3% | 1 | 0.3% | 0 | 0.0% | 1 | 0.3% |
| Other Southeast | 127 | 10.2% | 72 | 5.8% | 9 | 0.7% | 5 | 0.4% | 0 | 0.0% | 17 | 1.4% |
| Vietnamese | 237 | 10.3% | 94 | 4.1% | 32 | 1.4% | 4 | 0.2% | 1 | 0.0% | 43 | 1.9% |
| Summary | 941 | 9.2% | 362 | 3.5% | 114 | 1.1% | 22 | 0.2% | 5 | 0.0% | 206 | 2.0% |
| White | | | | | | | | | | | | |
| Gypsy | 5 | 27.8% | 3 | 16.7% | 0 | 0.0% | 1 | 5.6% | 0 | 0.0% | 1 | 5.6% |
| White | 2,649 | 13.7% | 798 | 4.1% | 440 | 2.3% | 100 | 0.5% | 16 | 0.1% | 808 | 4.2% |
| Summary | 2,654 | 13.7% | 801 | 4.1% | 440 | 2.3% | 101 | 0.5% | 16 | 0.1% | 809 | 4.2% |
| TOTAL | 6,402 | 14.0% | 2,435 | 5.3% | 929 | 2.0% | 303 | 0.7% | 33 | 0.1% | 1,553 | 3.4% |

District Summary
Number and Percent of Students in each Ethnic Group in Special Education (Part 2 of 2)
All Regular and Alternative Schools -- June 2007 Data

| ETHNIC GROUP | Mentally Retarded | | Multi-Handicapped | | Communication Disordered | | Deaf | | Hard of Hearing | | Visually Impaired | |
|-------------------------|-------------------|-------------|-------------------|-------------|--------------------------|-------------|-----------|--------------|-----------------|-------------|-------------------|--------------|
| | No. | % | No. | % | No. | % | No. | % | No. | % | No. | % |
| American Indians | | | | | | | | | | | | |
| American Indian | 3 | 0.5% | 1 | 0.2% | 7 | 1.1% | 0 | 0.0% | 1 | 0.2% | 0 | 0.0% |
| Alaska Native | 1 | 0.8% | 0 | 0.0% | 3 | 2.4% | 0 | 0.0% | 0 | 0.0% | 0 | 0.0% |
| Native American | 1 | 0.5% | 1 | 0.5% | 4 | 1.9% | 0 | 0.0% | 0 | 0.0% | 0 | 0.0% |
| Summary | 5 | 0.5% | 2 | 0.2% | 14 | 1.4% | 0 | 0.0% | 1 | 0.1% | 0 | 0.0% |
| African American | | | | | | | | | | | | |
| African American | 76 | 0.8% | 8 | 0.1% | 173 | 1.7% | 2 | 0.0% | 15 | 0.2% | 4 | 0.0% |
| Chicano/Latino | | | | | | | | | | | | |
| Latino Asian | 0 | 0.0% | 1 | 0.4% | 6 | 2.1% | 0 | 0.0% | 0 | 0.0% | 0 | 0.0% |
| Latino Black | 3 | 0.9% | 1 | 0.3% | 8 | 2.3% | 0 | 0.0% | 0 | 0.0% | 0 | 0.0% |
| Latino Indian | 6 | 0.2% | 1 | 0.0% | 53 | 2.0% | 3 | 0.1% | 5 | 0.2% | 1 | 0.0% |
| Latino White | 6 | 0.3% | 0 | 0.0% | 30 | 1.6% | 2 | 0.1% | 3 | 0.2% | 1 | 0.1% |
| Summary | 15 | 0.3% | 3 | 0.1% | 97 | 1.9% | 5 | 0.1% | 8 | 0.2% | 2 | 0.0% |
| Asian | | | | | | | | | | | | |
| Chinese | 7 | 0.3% | 1 | 0.0% | 50 | 1.9% | 1 | 0.0% | 3 | 0.1% | 0 | 0.0% |
| East Indian | 2 | 0.7% | 3 | 1.0% | 1 | 0.3% | 1 | 0.3% | 2 | 0.7% | 0 | 0.0% |
| Filipino | 4 | 0.2% | 4 | 0.2% | 29 | 1.6% | 0 | 0.0% | 1 | 0.1% | 0 | 0.0% |
| Japanese | 0 | 0.0% | 0 | 0.0% | 5 | 0.7% | 0 | 0.0% | 0 | 0.0% | 1 | 0.1% |
| Korean | 1 | 0.3% | 0 | 0.0% | 7 | 2.1% | 0 | 0.0% | 0 | 0.0% | 0 | 0.0% |
| Other Asian | 1 | 0.2% | 1 | 0.2% | 10 | 1.9% | 0 | 0.0% | 1 | 0.2% | 1 | 0.2% |
| Samoan | 0 | 0.0% | 1 | 0.3% | 7 | 2.3% | 0 | 0.0% | 0 | 0.0% | 0 | 0.0% |
| Other Southeast | 7 | 0.6% | 3 | 0.2% | 12 | 1.0% | 0 | 0.0% | 2 | 0.2% | 0 | 0.0% |
| Vietnamese | 3 | 0.1% | 5 | 0.2% | 51 | 2.2% | 0 | 0.0% | 4 | 0.2% | 0 | 0.0% |
| Summary | 25 | 0.2% | 18 | 0.2% | 172 | 1.7% | 2 | 0.0% | 13 | 0.1% | 2 | 0.0% |
| White | | | | | | | | | | | | |
| Gypsy | 0 | 0.0% | 0 | 0.0% | 0 | 0.0% | 0 | 0.0% | 0 | 0.0% | 0 | 0.0% |
| White | 41 | 0.2% | 25 | 0.1% | 388 | 2.0% | 5 | 0.03% | 22 | 0.1% | 6 | 0.03% |
| Summary | 41 | 0.2% | 25 | 0.1% | 388 | 2.0% | 5 | 0.03% | 22 | 0.1% | 6 | 0.03% |
| TOTAL | 162 | 0.4% | 56 | 0.1% | 844 | 1.8% | 14 | 0.03% | 59 | 0.1% | 14 | 0.03% |

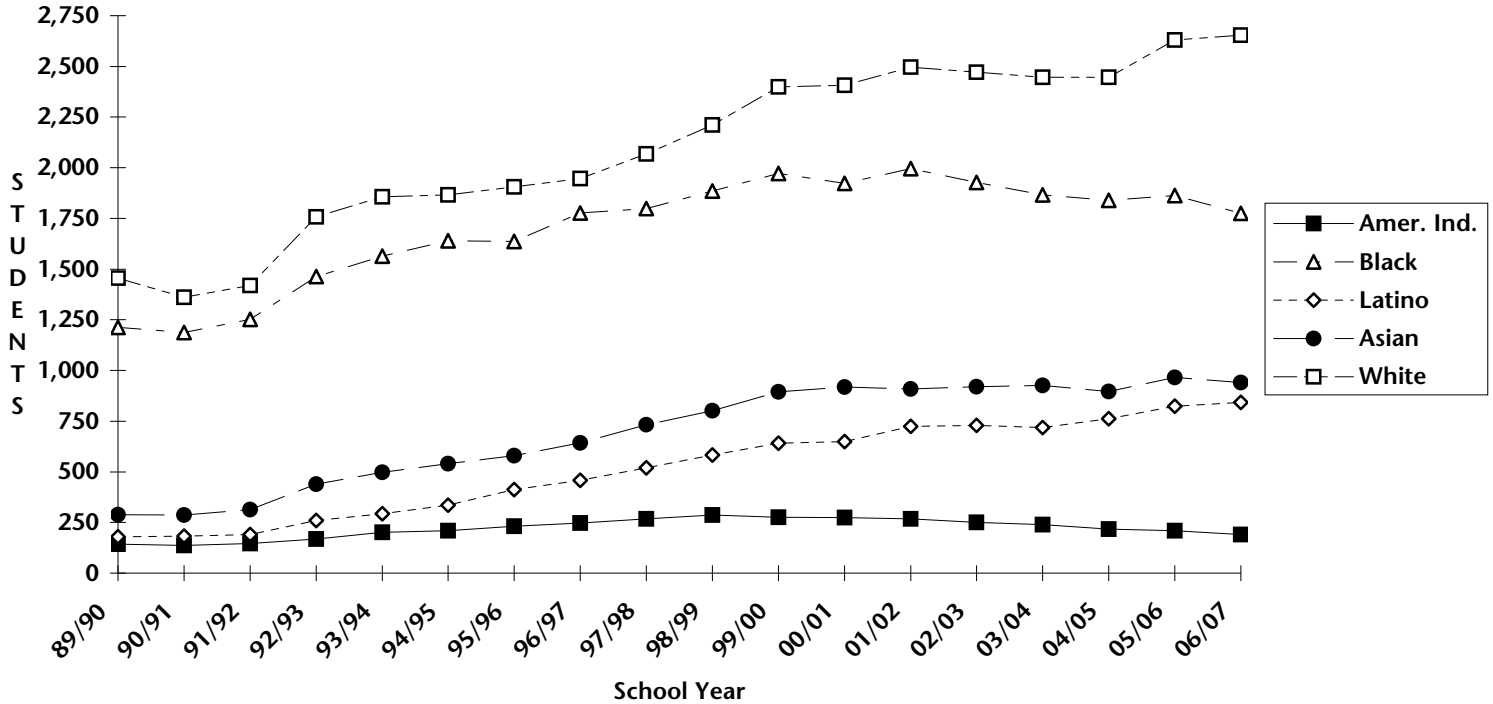
**Special Education Students by Percent of Ethnic Group
District Summary - All Regular and Alternative Schools
1989-1990 to 2006-2007**

Based on June Data



**Number of Special Education Students by Ethnic Group
District Summary - All Regular and Alternative Schools
1989-1990 to 2006-2007**

Based on June Data

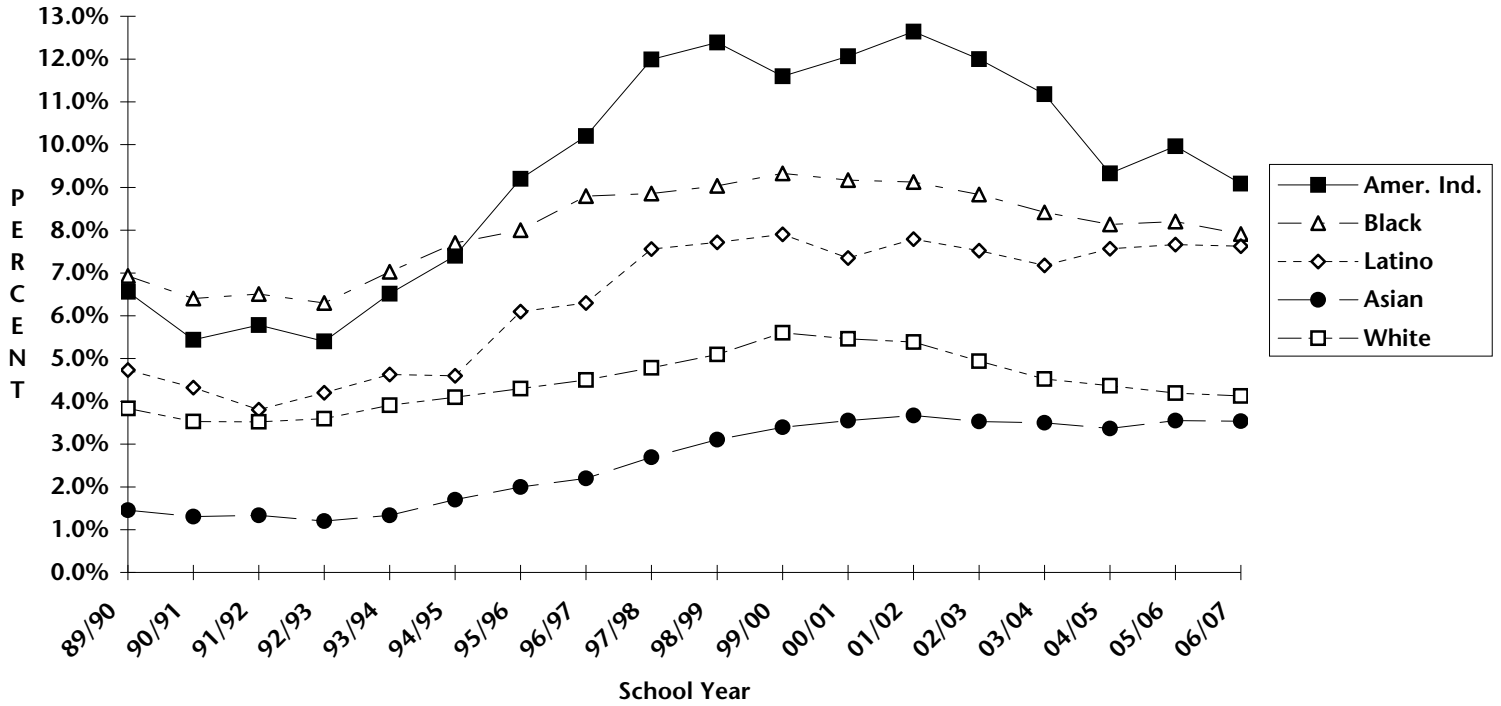


District Summary
Number and Percent of Special Education Students in each Ethnic Group
All Regular and Alternative Schools

| ETHNIC GROUP | 2001/2002 | | 2002/2003 | | 2003/2004 | | 2004/2005 | | 2005/2006 | | 2006/2007 | |
|-------------------------|-----------|-------|-----------|-------|-----------|-------|-----------|-------|-----------|-------|-----------|-------|
| | No. | % | No. | % | No. | % | No. | % | No. | % | No. | % |
| American Indians | | | | | | | | | | | | |
| American Indian | 179 | 20.7% | 162 | 20.2% | 159 | 20.6% | 140 | 19.5% | 132 | 20.0% | 123 | 19.3% |
| Alaska Native | 25 | 17.4% | 25 | 18.8% | 18 | 14.4% | 20 | 16.4% | 24 | 18.2% | 19 | 15.3% |
| Native American | 63 | 30.0% | 63 | 28.4% | 62 | 24.9% | 58 | 23.8% | 54 | 23.4% | 48 | 23.2% |
| Summary | 267 | 21.9% | 250 | 21.6% | 239 | 20.9% | 218 | 20.1% | 210 | 20.5% | 190 | 19.6% |
| African American | 1,996 | 18.3% | 1,928 | 17.9% | 1,866 | 17.6% | 1,839 | 17.4% | 1,864 | 17.8% | 1,775 | 17.8% |
| Chicano/Latino | | | | | | | | | | | | |
| Latino Asian | 24 | 7.5% | 27 | 8.3% | 35 | 11.0% | 33 | 11.0% | 34 | 11.9% | 33 | 11.7% |
| Latino Black | 60 | 16.9% | 66 | 17.2% | 64 | 16.9% | 72 | 18.0% | 81 | 20.9% | 83 | 23.6% |
| Latino Indian | 424 | 16.2% | 417 | 16.3% | 383 | 15.2% | 405 | 15.9% | 433 | 16.6% | 456 | 17.4% |
| Latino White | 217 | 12.4% | 220 | 12.0% | 236 | 12.0% | 253 | 12.7% | 275 | 13.8% | 270 | 14.0% |
| Summary | 725 | 14.4% | 730 | 14.3% | 718 | 13.8% | 763 | 14.5% | 823 | 15.6% | 842 | 16.2% |
| Asian | | | | | | | | | | | | |
| Chinese | 138 | 5.8% | 148 | 6.1% | 161 | 6.4% | 144 | 5.7% | 176 | 6.8% | 188 | 7.2% |
| East Indian | 32 | 11.0% | 25 | 9.0% | 31 | 11.0% | 37 | 12.8% | 40 | 12.8% | 37 | 12.1% |
| Filipino | 174 | 8.2% | 167 | 7.8% | 153 | 7.3% | 150 | 7.4% | 161 | 8.2% | 155 | 8.4% |
| Japanese | 44 | 5.6% | 43 | 5.4% | 43 | 5.5% | 43 | 5.5% | 56 | 7.4% | 53 | 7.0% |
| Korean | 28 | 7.2% | 31 | 8.3% | 25 | 7.5% | 27 | 8.4% | 28 | 8.6% | 27 | 8.2% |
| Other Asian | 64 | 14.1% | 72 | 15.2% | 73 | 13.9% | 76 | 14.4% | 84 | 15.5% | 78 | 14.7% |
| Samoan | 56 | 12.5% | 56 | 12.1% | 50 | 11.7% | 46 | 12.2% | 42 | 11.8% | 39 | 12.5% |
| Other Southeast | 164 | 9.2% | 167 | 10.0% | 170 | 10.9% | 151 | 10.4% | 146 | 10.8% | 127 | 10.2% |
| Vietnamese | 209 | 8.7% | 211 | 9.0% | 220 | 9.4% | 222 | 9.5% | 233 | 10.0% | 237 | 10.3% |
| Summary | 909 | 8.2% | 920 | 8.4% | 926 | 8.5% | 896 | 8.4% | 966 | 9.1% | 941 | 9.2% |
| White | | | | | | | | | | | | |
| Gypsy | 5 | 20.8% | 7 | 26.9% | 7 | 28.0% | 7 | 25.0% | 6 | 26.1% | 5 | 27.8% |
| White | 2,492 | 13.1% | 2,464 | 12.9% | 2,439 | 12.6% | 2,439 | 12.8% | 2,625 | 13.6% | 2,649 | 13.7% |
| Summary | 2,497 | 13.1% | 2,471 | 12.9% | 2,446 | 12.7% | 2,446 | 12.8% | 2,631 | 13.6% | 2,654 | 13.7% |
| TOTAL | 6,394 | 13.5% | 6,299 | 13.4% | 6,195 | 13.1% | 6,162 | 13.2% | 6,494 | 13.9% | 6,402 | 14.0% |

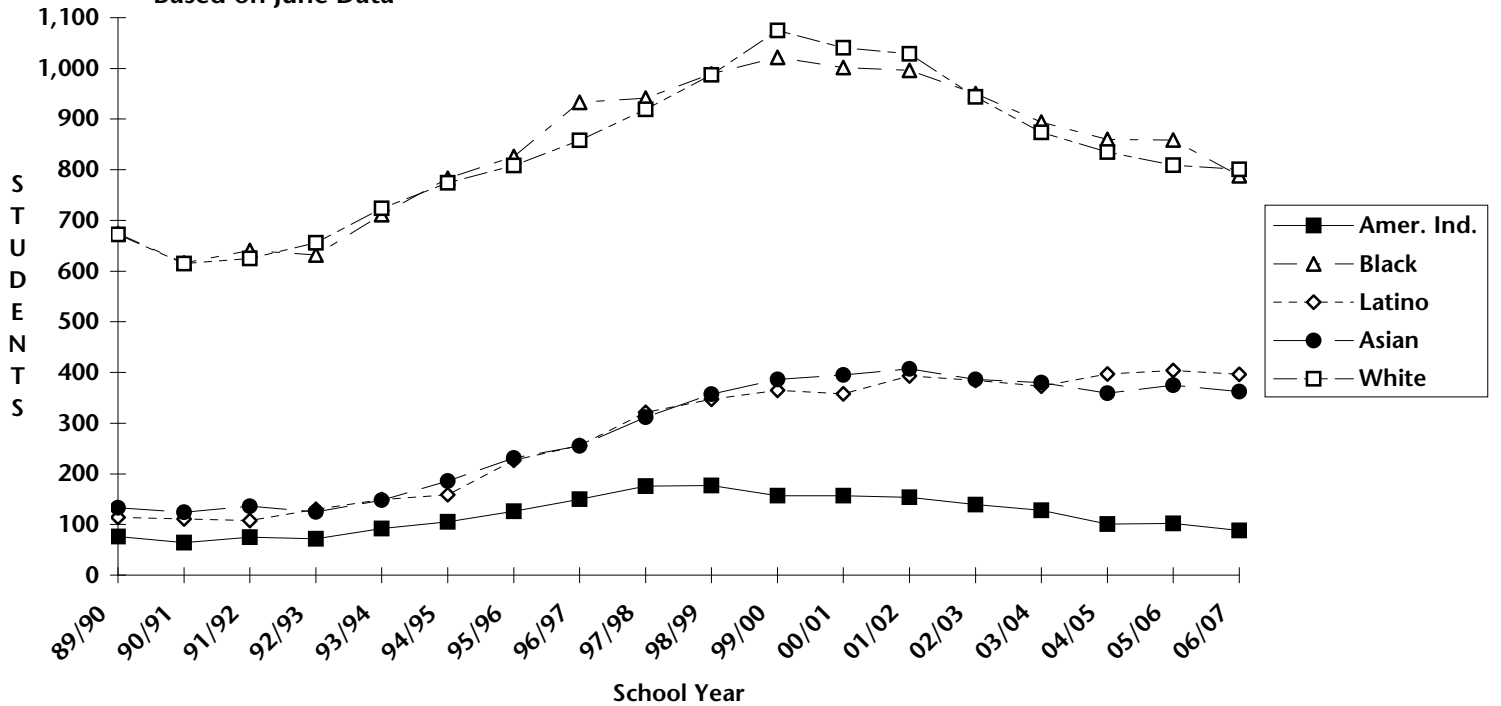
**Specific Learning Disabled by Percent of Ethnic Group
District Summary - All Regular and Alternative Schools
1989-1990 to 2006-2007**

Based on June Data



**Number of Specific Learning Disabled by Ethnic Group
District Summary - All Regular and Alternative Schools
1989-1990 to 2006-2007**

Based on June Data



District Summary
Number and Percent of Students in each Ethnic Group with Specific Learning Disabilities
All Regular and Alternative Schools

| ETHNIC GROUP | 2001/2002 | | 2002/2003 | | 2003/2004 | | 2004/2005 | | 2005/2006 | | 2006/2007 | |
|-------------------------|--------------|-------------|--------------|-------------|--------------|-------------|--------------|-------------|--------------|-------------|--------------|-------------|
| | No. | % | No. | % | No. | % | No. | % | No. | % | No. | % |
| American Indians | | | | | | | | | | | | |
| American Indian | 110 | 12.7% | 92 | 11.5% | 89 | 11.5% | 71 | 9.9% | 70 | 10.6% | 62 | 9.7% |
| Alaska Native | 16 | 11.1% | 19 | 14.3% | 12 | 9.6% | 9 | 7.4% | 10 | 7.6% | 5 | 4.0% |
| Native American | 28 | 13.3% | 28 | 12.6% | 27 | 10.8% | 21 | 8.6% | 22 | 9.5% | 21 | 10.1% |
| Summary | 154 | 12.6% | 139 | 12.0% | 128 | 11.2% | 101 | 9.3% | 102 | 10.0% | 88 | 9.1% |
| African American | | | | | | | | | | | | |
| African American | 996 | 9.1% | 950 | 8.8% | 894 | 8.4% | 860 | 8.1% | 859 | 8.2% | 788 | 7.9% |
| Chicano/Latino | | | | | | | | | | | | |
| Latino Asian | 12 | 3.7% | 12 | 3.7% | 16 | 5.0% | 16 | 5.3% | 9 | 3.2% | 10 | 3.5% |
| Latino Black | 34 | 9.6% | 37 | 9.7% | 27 | 7.1% | 35 | 8.8% | 41 | 10.6% | 45 | 12.8% |
| Latino Indian | 235 | 9.0% | 223 | 8.7% | 206 | 8.2% | 220 | 8.6% | 216 | 8.3% | 221 | 8.4% |
| Latino White | 112 | 6.4% | 112 | 6.1% | 124 | 6.3% | 126 | 6.3% | 138 | 6.9% | 120 | 6.2% |
| Summary | 393 | 7.8% | 384 | 7.5% | 373 | 7.2% | 397 | 7.6% | 404 | 7.7% | 396 | 7.6% |
| Asian | | | | | | | | | | | | |
| Chinese | 45 | 1.9% | 46 | 1.9% | 45 | 1.8% | 36 | 1.4% | 49 | 1.9% | 50 | 1.9% |
| East Indian | 8 | 2.7% | 6 | 2.2% | 9 | 3.2% | 13 | 4.5% | 14 | 4.5% | 12 | 3.9% |
| Filipino | 90 | 4.2% | 78 | 3.7% | 76 | 3.6% | 68 | 3.3% | 63 | 3.2% | 51 | 2.8% |
| Japanese | 12 | 1.5% | 10 | 1.3% | 11 | 1.4% | 12 | 1.5% | 19 | 2.5% | 18 | 2.4% |
| Korean | 10 | 2.6% | 10 | 2.7% | 9 | 2.7% | 7 | 2.2% | 8 | 2.5% | 9 | 2.7% |
| Other Asian | 25 | 5.5% | 30 | 6.3% | 30 | 5.7% | 32 | 6.0% | 33 | 6.1% | 31 | 5.8% |
| Samoan | 32 | 7.2% | 30 | 6.5% | 29 | 6.8% | 28 | 7.4% | 25 | 7.0% | 25 | 8.0% |
| Other Southeast | 94 | 5.2% | 98 | 5.9% | 93 | 6.0% | 82 | 5.6% | 77 | 5.7% | 72 | 5.8% |
| Vietnamese | 91 | 3.8% | 78 | 3.3% | 78 | 3.3% | 81 | 3.5% | 87 | 3.7% | 94 | 4.1% |
| Summary | 407 | 3.7% | 386 | 3.5% | 380 | 3.5% | 359 | 3.4% | 375 | 3.6% | 362 | 3.5% |
| White | | | | | | | | | | | | |
| Gypsy | 3 | 12.5% | 3 | 11.5% | 4 | 16.0% | 3 | 10.7% | 3 | 13.0% | 3 | 16.7% |
| White | 1,026 | 5.4% | 941 | 4.9% | 870 | 4.5% | 832 | 4.4% | 806 | 4.2% | 798 | 4.1% |
| Summary | 1,029 | 5.4% | 944 | 4.9% | 874 | 4.5% | 835 | 4.4% | 809 | 4.2% | 801 | 4.1% |
| TOTAL | 2,979 | 6.3% | 2,803 | 6.0% | 2,649 | 5.6% | 2,552 | 5.5% | 2,549 | 5.5% | 2,435 | 5.3% |