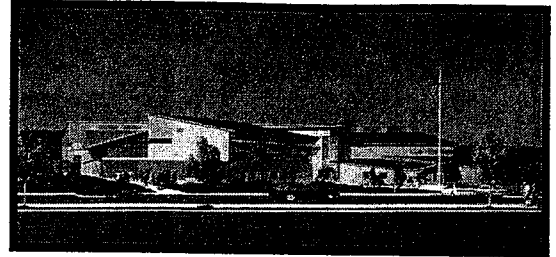


# South Lake High School



**Project Location:** 8825 Rainier Avenue S.  
Seattle, WA 98118

**Architect:** BLRB Architects, ps /  
Streeter & Assoc.

**Procurement Method:** Design-Bid-Build

**Contractor:** Commercial Structures,  
Inc. (CSI)

**Project Description:** Construction of new 32,000 sf (including child care) stand-alone building on the South Shore site. Expanded student capacity from 150 to 200 students.

**Substantial Completion Date:** Summer 2008

**Activity that has occurred this period:**

First Floor:

- HVAC ductwork installation complete.
- MEP/Fire Sprinkler rough-ins nearing completion.
- Electrical rough-ins nearing completion.
- Interior wood framing complete.
- Exterior sheathing complete, perma-barrier nearing completion.
- Exterior masonry veneer nearing completion.

Second Floor:

- Fire Sprinkler rough-ins nearing completion.
- Plumbing rough-ins continue.
- Electrical rough-ins/power and lighting systems continue.
- HVAC rough-ins continue.
- MEP risers will be nearing completion.
- Exterior sheathing complete.
- Roof system/shingle installation started.

**Activity planned for next period:**

- Fine grading at perimeter and bioswale.
- Building wrap complete.
- Masonry veneer complete.
- Second floor concrete deck poured at East Wing.
- Second floor interior framing complete at East Wing.
- MEP/FP systems installation at second floor.
- Roof/Dry-in complete.
- Aluminum windows/entrances.
- Exterior siding and trim.
- Electrical wiring started at first floor.

- MEP/FP inspections at first floor.
- Insulation started at first and second floors.
- Drywall started at first and second floors.
- Painting started at first floor.
- Acoustical ceiling grid start at first floor.

**Budget Status:**

Within budget.

**Schedule Status:**

Contractor is utilizing all available work hours and has increased manpower. FFE move-in to commence July 7, staff in and working August 1.