

# Get on Board!

## WHAT MAKES A **GREAT** SCHOOL BOARD MEMBER?

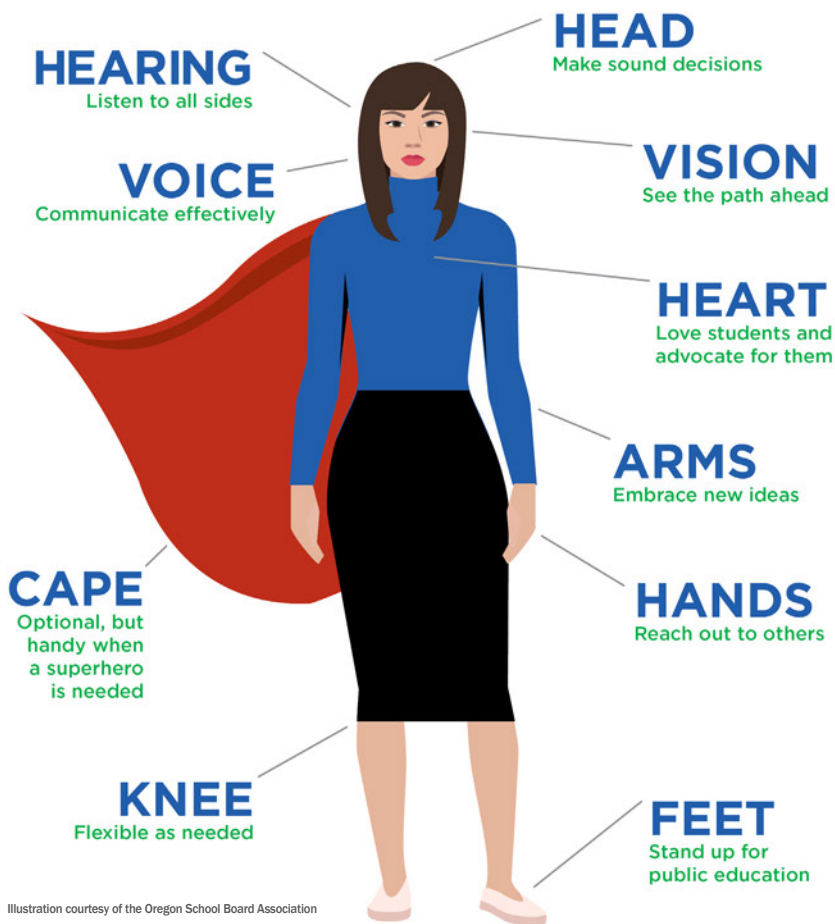


Illustration courtesy of the Oregon School Board Association

### Who are school directors?

Washington state's public school districts are directed by publically-elected school boards. These board members – called "school directors" – are citizens just like you! They are parents and grandparents, young people and senior citizens, and community members from all walks of life.

There is great value in diversity on a school board. Each member brings his or her varying experiences and background to inform good decision making with a spirit of teamwork.

A statewide survey conducted by WSSDA shows that its members run for school board for two primary reasons: to give back to their community and to help children get a good education.

### What does a school board do?

School directors work together to oversee the school district. As a board, their primary responsibilities are:

- Hire, supervise and evaluate the superintendent
- Set the vision, mission and strategic goals for the district
- Review, revise and adopt policies
- Establish and oversee the budget
- Serve as community representatives
- Monitor the district's progress towards its goals

*continued >*

**WHERE CAN YOU FIND THE NEXT GREAT SCHOOL BOARD MEMBER?**  
**Look in the mirror: It might be YOU.**

## Want to be a school director? Here's how to get started:

- 1 For information on how to file, check the Washington Secretary of State's website at: <https://www.sos.wa.gov/elections/> under the Candidates tab, call (360) 902-4180 or (800) 448-4881, or email: [elections@sos.wa.gov](mailto:elections@sos.wa.gov).
- 2 Find out which positions are up for election and verify that you are eligible to run for the office. You must be a registered voter and live within your school district boundaries. Some school director positions require that you live within a certain director area, so check to be sure you're qualified. Your local county elections department or school district office can help verify that you are eligible.
- 3 File during filing week, May 15-19, 2017. Candidates may file for an office online or in person at the local elections office.
- 4 Be aware of state requirements for all candidates and elected officials to file a financial disclosure statement and report all campaign finances to the Washington State Public Disclosure Commission (PDC). Annual filing is required if elected. More information can be found here: <https://www.pdc.wa.gov/learn>. Information for candidates can be found here: <https://www.pdc.wa.gov/learn>.

## Key 2017 dates for school director candidates:

Voting in Washington state is done by mail-in ballot.

- Filing Week: May 15-19
- Primary Election: July 14 – Aug. 1
- General Election: Oct. 20 – Nov. 7

## What kind of training is available?

The Washington State School Directors' Association (WSSDA) provides training and support to school directors. WSSDA is offering eight free workshops for school board candidates across the state in June 2017.

Become a  
voice for  
Washington  
students

## Candidate Workshops

### SCHEDULE

All workshops are 6:30 – 8:30 p.m.  
Registration is free, but required.

#### Thursday, June 1

NEWTECH Skills Center, Spokane

#### Monday, June 5

WSSDA Conference Center, Olympia

#### Wednesday, June 7

North Central ESD, Wenatchee

#### Thursday, June 8

ESD 123, Pasco

#### Tuesday, June 13

ESD 105, Yakima

#### Tuesday, June 13

Port Angeles School District,  
Port Angeles

#### Wednesday, June 14

Longview School District, Longview

#### Wednesday, June 21

Kenmore Library, Kenmore

For workshop details and registration,  
visit our website at [www.wssda.org](http://www.wssda.org) >  
events > workshops.



## WASHINGTON STATE SCHOOL DIRECTORS' ASSOCIATION

For more information, contact WSSDA's Leadership Development Services department:  
Colleen Miller, [C.Miller@wssda.org](mailto:C.Miller@wssda.org) (360) 252-3006 • Tricia Lubach, [T.Lubach@wssda.org](mailto:T.Lubach@wssda.org) (360) 890-5868

